

PART E
SPECIFICATIONS

PART E - SPECIFICATIONS

GENERAL

E1. GENERAL

E1.1 These Specifications shall apply to the Work.

E1.2 The following Drawings are applicable to the Work:

<u>Drawing No.</u>	<u>Drawing</u>
A1	Jacket
A2	Fleece Liner

E2. GOODS

E2.1 The Contractor shall supply bomber jacket(s) in accordance with the requirements hereinafter specified.

E2.2 Item No. 1 – Bomber Jackets and outer shell shall be as follows:

(a) Design and Construction:

- (i) Waterproof by design.
- (ii) Front zipper closure, heavy duty nylon zipper.
- (iii) Front of jacket, double storm flap over the zipper.
- (iv) Two piece sleeve with adjustable hook and loop closure cuffs.
- (v) Insulated sport collar with knit neck band.
- (vi) Two upper vertical zippered pockets.
- (vii) Two lower slash pockets.
- (viii) Inside security pocket.
- (ix) Zippered side vents with snap tabs.
- (x) Scotchlite "FIRE RESCUE" logo on front, Scotchlite stripe under collar and inside cuffs.
- (xi) Elasticized bi-swing back.
- (xii) 30" length size large, hip length design.

(b) Fabric Shell:

- (i) Color: Navy Blue.
- (ii) Hip Length: 30".
- (iii) Nylon 70 denier warp and 2-ply 70 Denier taslanized nylon filling plain weave, Pantone TC1940/15.
- (iv) Treated with durable fluorocarbon water and stain release agents.
- (v) Microcoat DWR – water repellent spray.
- (vi) Waterproof breathable membrane.
- (vii) Weight of M-5 generic membrane, 88 grams/square meter.
- (viii) Elasticized bi-swing back in shell and stretch knit insert in liner.

(c) Lining Fabric:

- (i) Must be dry cleanable and washable waterproof material with moisture vapour transmission.

(d) Interlining:

- (i) 100% polyester non-woven.
- (e) Binding:
 - (i) 100 % nylon 70 denier taffeta plain weave.
- (f) Elastic:
 - (i) One (1) inch elastic webbing on the inside of the outer shell bottom of the back side.
- (g) Ribbon Loops:
 - (i) 0.5 inch nylon braid (colour: black).
- (h) Reflective Trim:
 - (i) 3M's "Scotchlite" one (1) inch silver reflective fabric under color and cuffs.
- (i) Seam Tape:
 - (i) Compatible with the permanent waterproof-breathable lining.
- (j) Zippers:
 - (i) Front zipper: delrin, two-way, size #5, 22 inches.
 - (ii) Upper front pocket zippers: nylon coil, one-way, size #5, 6.5 inches.
 - (iii) Side vent zippers: two-way, nylon coil, head to head (when open) sliders, size #5, 12 inches with snap tab closures.
 - (iv) Pit zipper to access to shell.
 - (v) Zipper lengths specified are for size L/Reg, Colour: Black
- (k) Collar:
 - (i) Insulated sport collar with knit neckband.
 - (ii) Hood snaps on collar.
- (l) Cuffs:
 - (i) Adjustable cuffs secured by hook and loop fastener.
- (m) Scotchlite:
 - (i) "FIRE RESCUE" on wearer's left front, in one (1) inch Scotchlite letters.
 - (ii) "Scotchlite" one (1) inch reflective tape on inside of cuff and under side of collar.
- (n) Epaulettes:
 - (i) Shall be 2.5 inches in width at the sleeve joining seam and shall taper to two (2) inches in width at the narrow end.
 - (ii) The point of the epaulettes shall finish at the collar, joining seam of the coat, fastened with a buttonhole and black button.
 - (iii) Epaulettes shall be removable.
- (o) Crests:
 - (i) Must be sewn onto both left and right shoulder.
 - (ii) Crests will be provided to the Contractor.
- (p) Size Ranges:
 - (i) Available in short, regular and tall.
 - (ii) 32,34,36,38,40,42,44,46,48,50,52,54 and 56.
- (q) Measurements:
 - (i) Unisex Regular Length: Size 44.
 - (ii) Chest (inches): 54 (+ or -) 0.75 inches.
 - (iii) Sleeve (inches) 36 (+ or -) 0.5 inches.
 - (iv) Back (inches) 30 (+ or -) 0.5 inches.

Drawing A1: Jacket

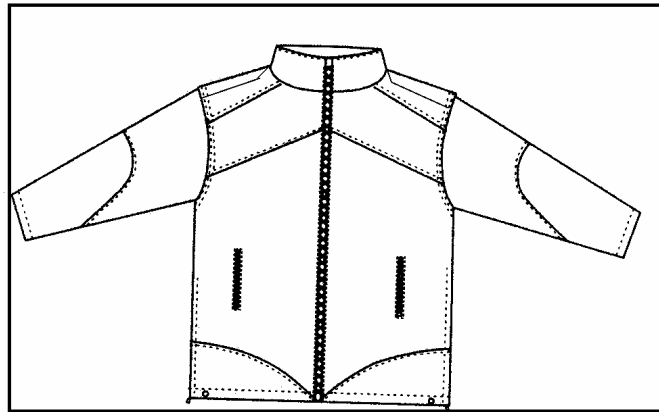


E2.3 Item No. 2 – Fleece Liner shall be as follows:

- (a) Design and Construction:
 - (i) Polartec Wind Pro Fleece inside liner.
 - (ii) Converts to vest with zip off sleeves.
 - (iii) Drop shoulder design for unrestricted movement
 - (iv) Side zippered with elasticized snap tabs for equipment access.
 - (v) Zippered fleece lined hand-warmer pockets.
 - (vi) Zip pullover style closes to the top of the collar.
 - (vii) Longer length: 29" size large.
 - (viii) Nylon/Lycra binding at bottom hem and cuffs.
 - (ix) Two inner chest pockets 8" wide by 9" high.
- (b) Shell Fabric:
 - (i) Color: Navy Blue
 - (ii) 19 oz. per linear yard light weight Polartec Wind Pro Fleece fabric, 100% Polyester.
 - (iii) Suede velour face and back with a highly breathable, tight knit construction.
- (c) Draw-cord:
 - (i) Elasticized draw-cord back hem
- (d) Cuff:
 - (i) To be elasticized.
- (e) Interlining:
 - (i) 100% polyester non-woven

- (f) Stretch Binding:
 - (i) 100% Nylon and Lycra with stretch (colour black).
- (g) Binding:
 - (i) 100% Nylon 70 denier taffeta plain weave.
- (h) Zippers:
 - (i) Front Zipper: nylon coil size #5, 25.5", one-way, with inside fly for wind protection.
 - (ii) Side Zippers: size #5, 10 inches long, one-way.
 - (iii) Pocket Zippers: nylon coil, size #5, 7 inches long.
 - (iv) Under the Arm Zipper: nylon coil, size, 21 inches long.
 - (v) Zipper length specified, are based for a Large Regular Liner – zipper must be adjusted accordingly per size.
- (i) Epaulettes:
 - (i) Epaulettes shall be 2.5 inches in width at the sleeve joining seam and shall taper to two (2) inches in width at the narrow end.
 - (ii) The point of the epaulettes shall finish at the collar, joining seam of the coat, fastened with a buttonhole and black button.
 - (iii) Epaulettes shall be removable.
- (j) Crests:
 - (i) Must be sewn onto both left and right shoulder.
 - (ii) Crests will be provided to the Contractor.
- (k) Scotchlite:
 - (i) "FIRE RESCUE" on wearer's left front, in one (1) inch Scotchlite letters.
- (l) Size Ranges:
 - (i) Available in Regular: x-small, small, medium, large, x-large, xx-large and xxx-large.
- (m) Measurements:
 - (i) Regular Length: Size Large.
 - (ii) Chest (inches): 51 (+ or -) 0.75 inches.
 - (iii) Sleeve Inseam (inches) 21 (+ or -) 0.5 inches.
 - (iv) Back (inches) 29 (+ or -) 0.5 inches.
- (n) Labelling:
 - (i) Garment shall be permanently labelled with the manufacturer, care instructions, and size.

Drawing A2: Fleece Liner



E3. DELIVERY

- E3.1 Goods shall be delivered on an "as required" basis during the term of the Contract, f.o.b. destination, freight prepaid, to 2546 McPhillips Street Winnipeg Manitoba.
- E3.1.1 Goods shall be delivered within forty five (45) Business Days of the placing of an order, except where otherwise agreed at the time of ordering.
- E3.1.2 The Contractor shall promptly report any delay or change to an agreed delivery date to the User.
- E3.2 Goods shall be delivered between 7:30 a.m. and 3:30 p.m. on Business Days.
- E3.3 The Contractor shall off-load goods as directed at the delivery location.