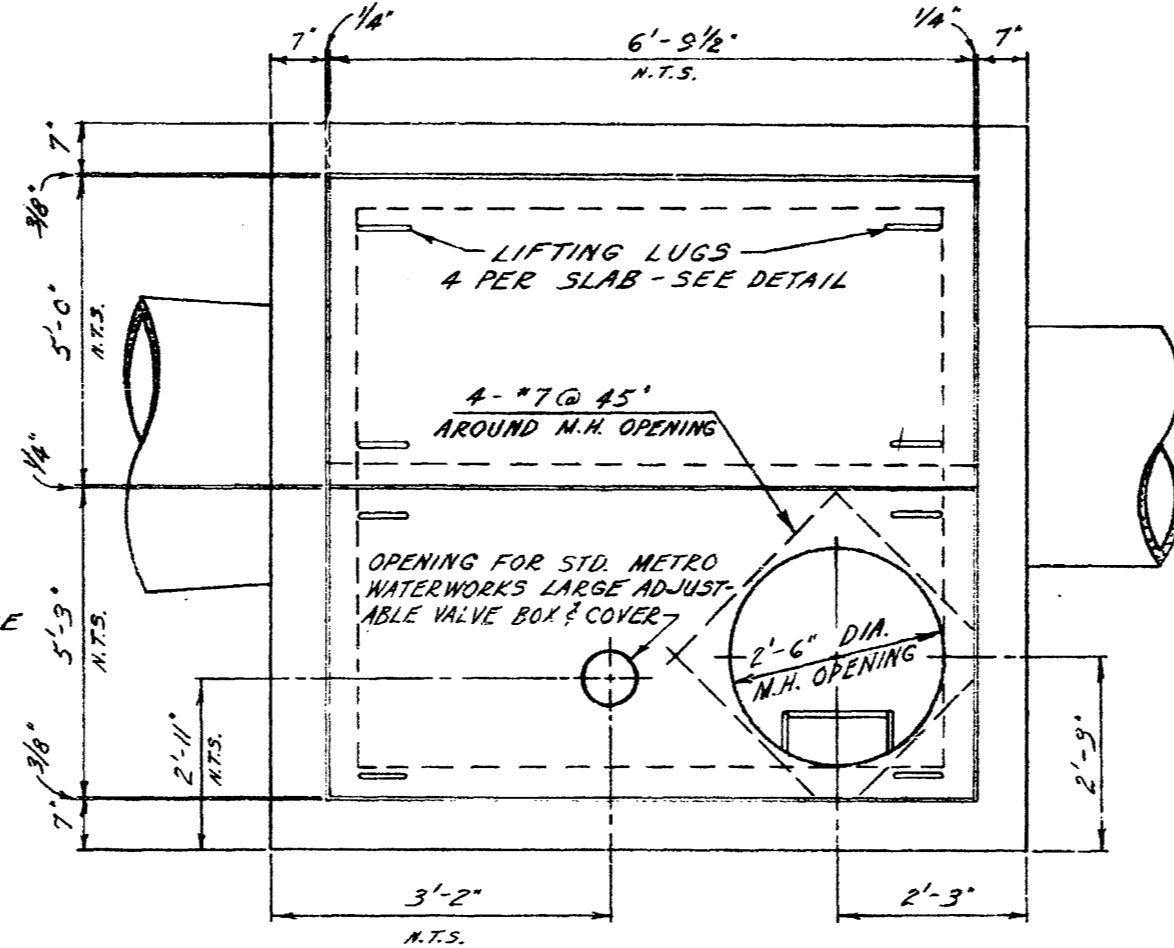


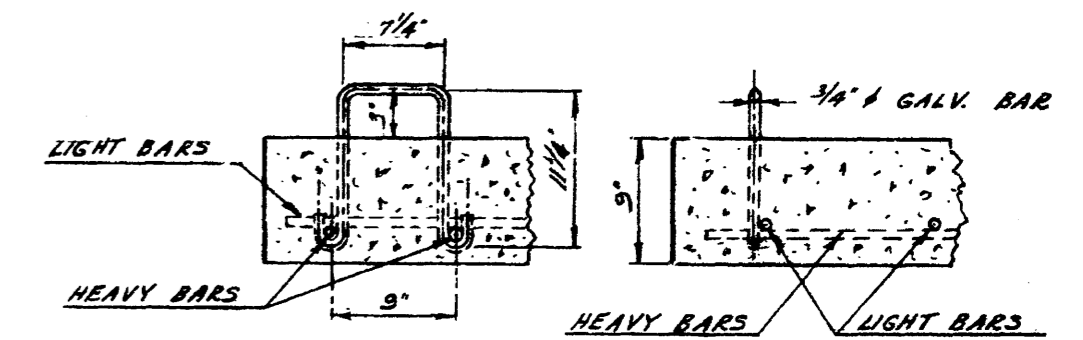
FLOOR PLAN



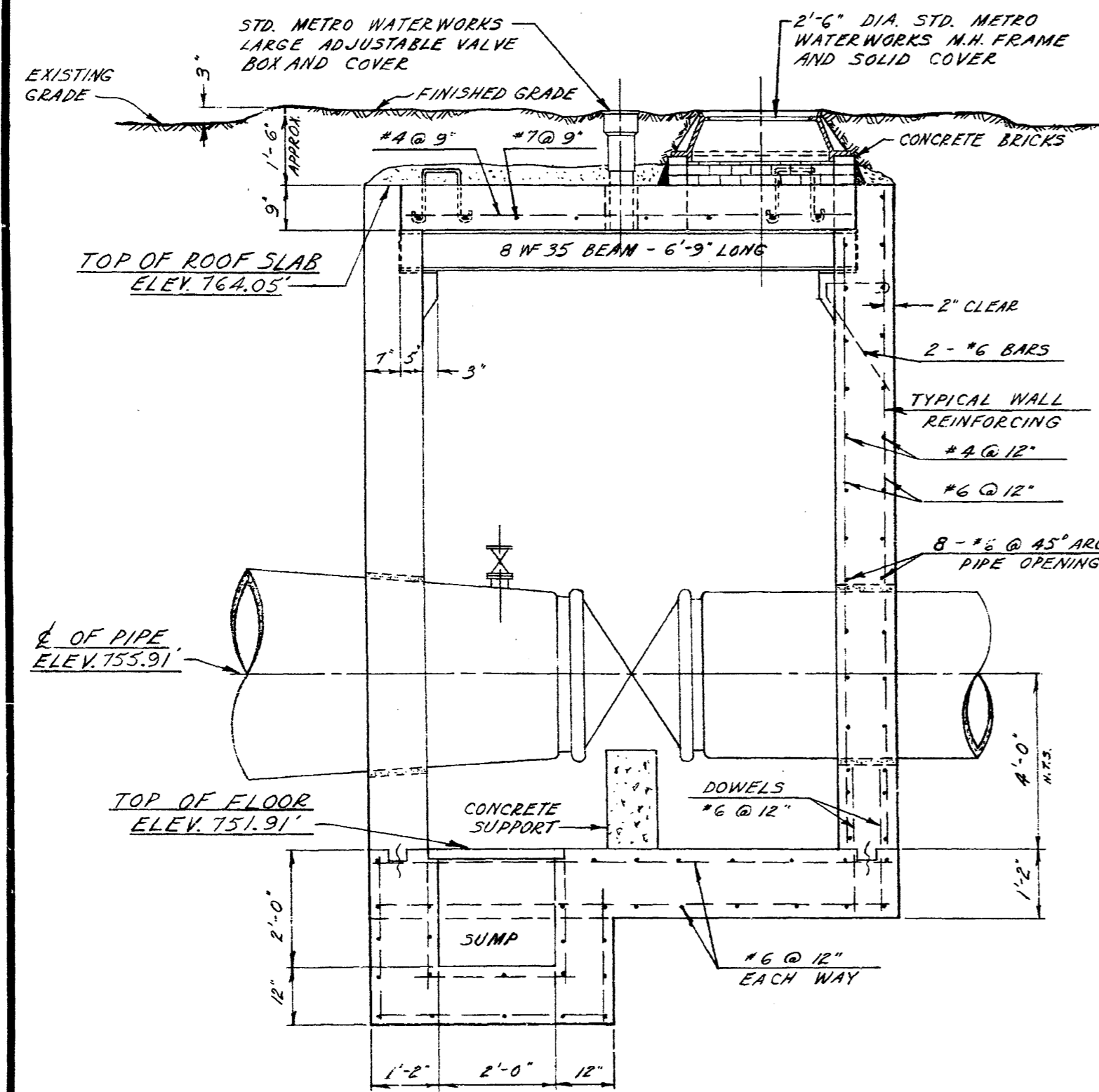
ROOF PLAN

NOTE:

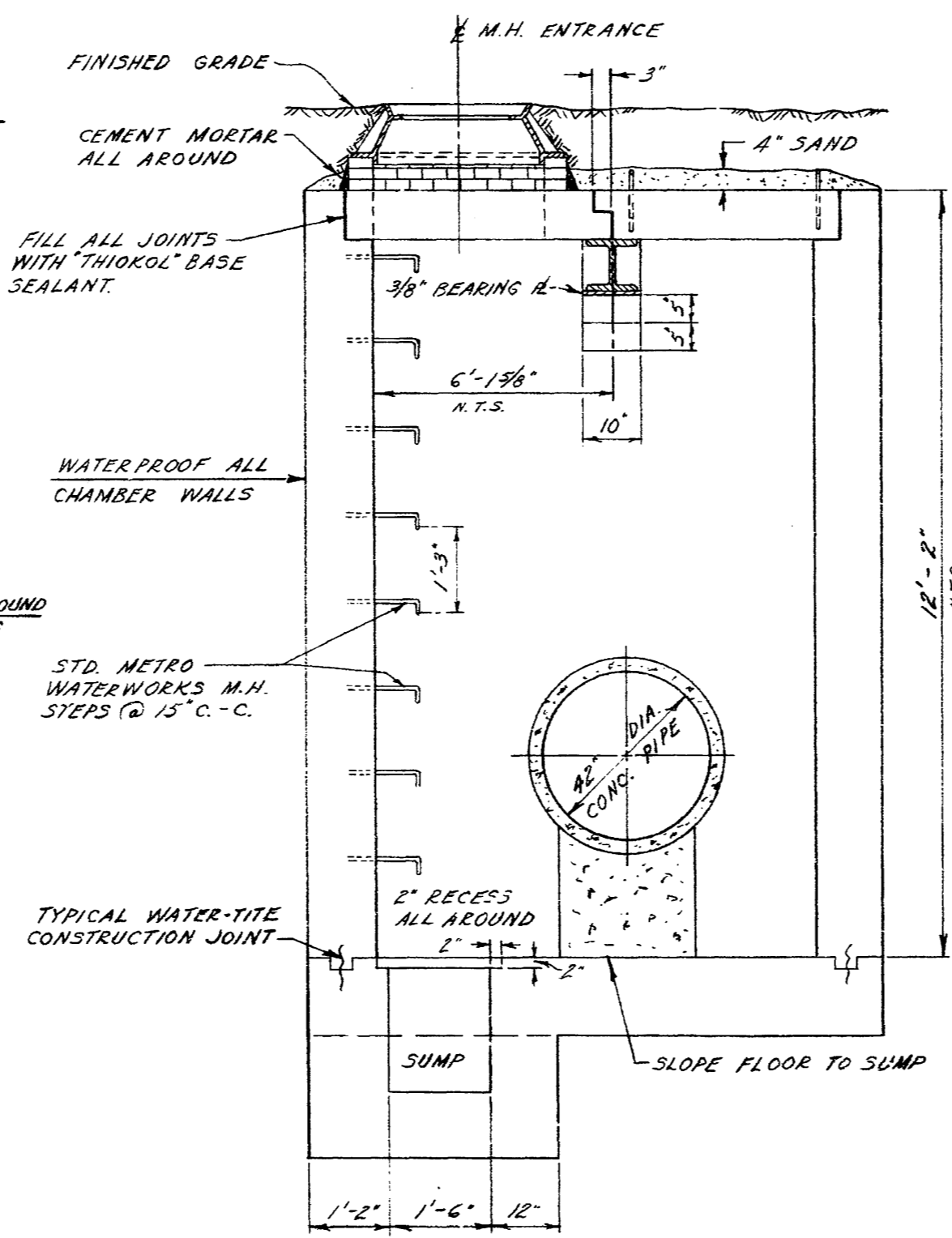
1. ALL PRECAST CHAMBER SLABS ARE TO BE NUMBERED ON THE UNDERSIDE IN THE ORDER BY WHICH THEY CAN BE REMOVED. CAST IN TYPICAL HOUSE NUMBERS.
2. PLACE BUILDING PAPER BETWEEN VALVE AND SUPPORT
3. VICTAULIC COUPLINGS TO BE STYLE #44.
4. FITTINGS ON TOP OF 54"x42" REDUCER SHALL CONSIST OF A 3" NIPPLE (SCREW TO SCREW ON FLANGE), 3" GATE VALVE FLANGED.



DETAIL OF LIFTING LUG
SCALE - 1" = 1'-0"



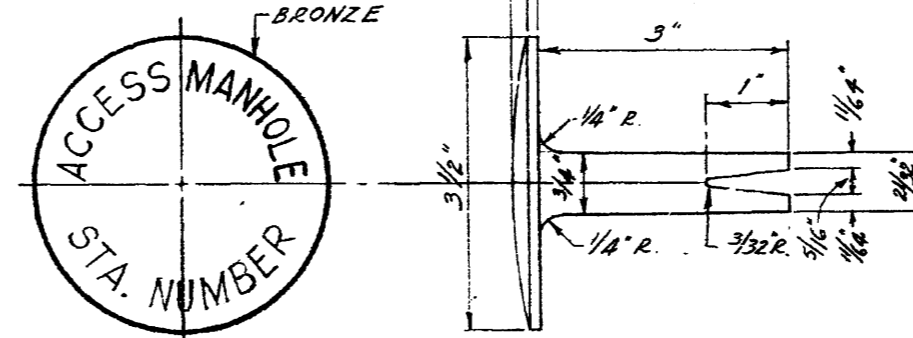
LONG SECTION



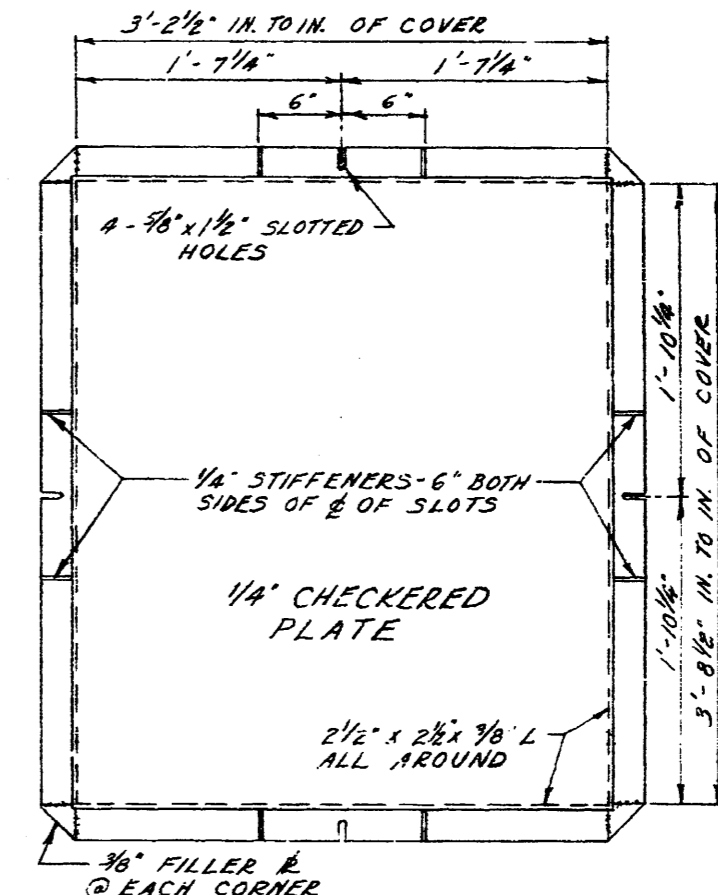
CROSS - SECTION

MAIN LINE VALVE CHAMBER AT STA. 157+11.44

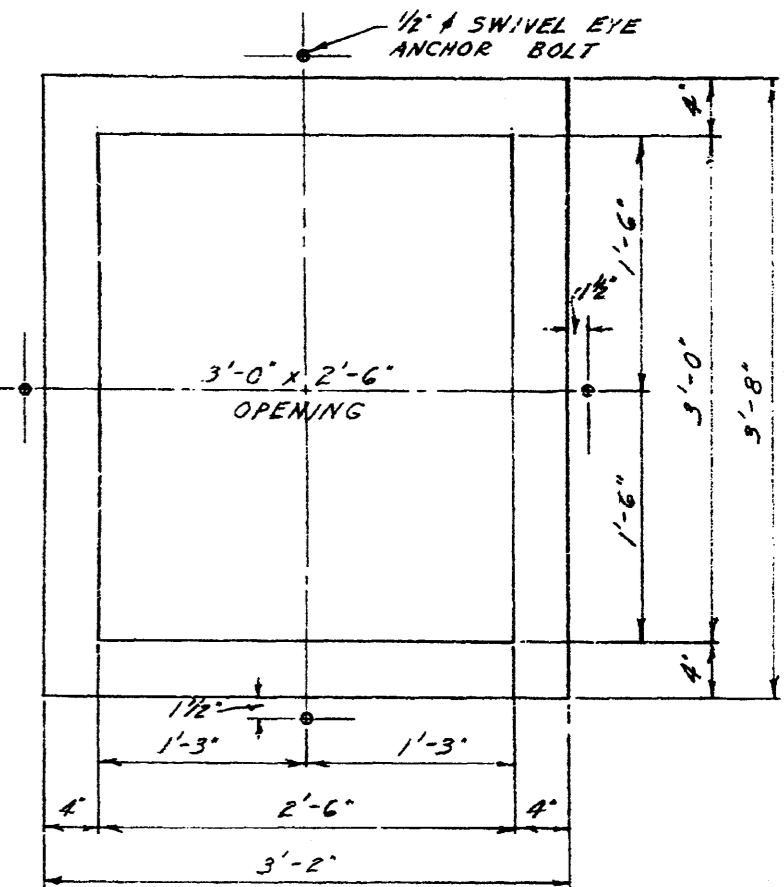
SCALE - 1/2" = 1'-0"



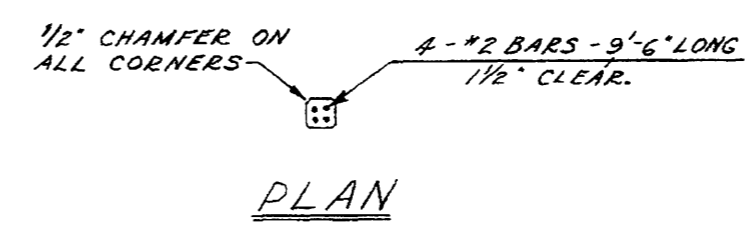
TOP VIEW SIDE VIEW
DETAIL OF BRONZE MARKER
SCALE - 1/2" = 1'



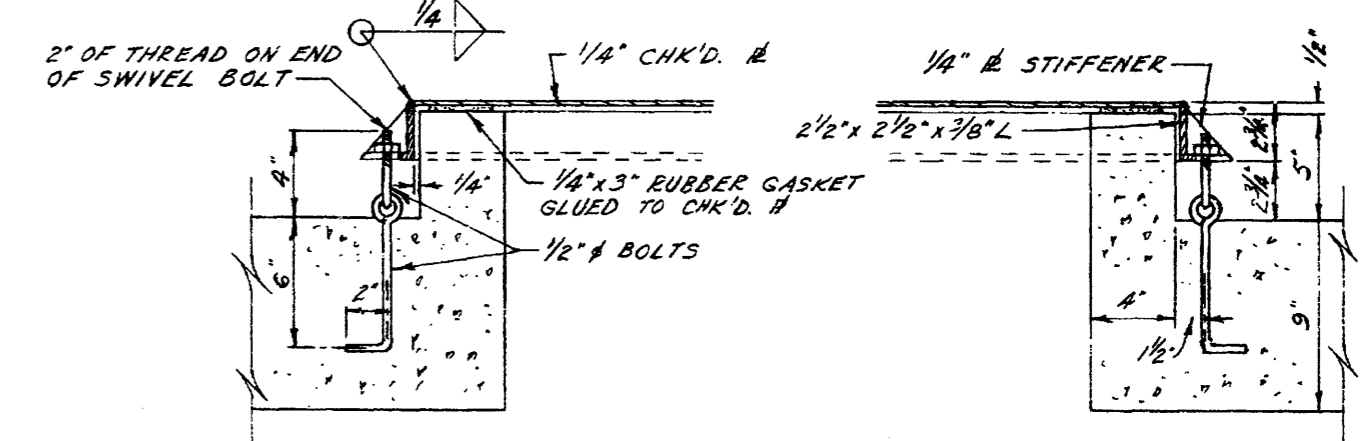
PLAN OF COVER
SCALE - 1" = 1'-0"



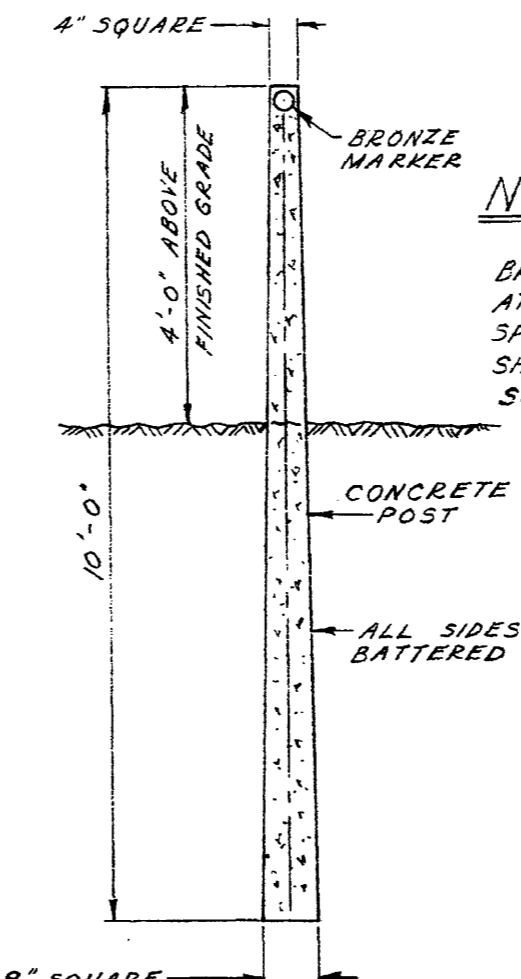
PLAN OF OPENING
SCALE - 1" = 1'-0"



PLAN



CROSS - SECTION
SCALE - 1/2" = 1'-0"
DETAIL OF MOISTURE PROOF COVER



SECTION
SCALE - 1/2" = 1'-0"

DETAIL OF MARKER POST FOR ACCESS MANHOLES

NOTE:
A MARKER POST WITH A BRONZE MARKER MUST BE PROVIDED AT ALL ACCESS MANHOLES AS PER SPECIFICATIONS. MARKER POSTS SHALL BE LOCATED BY THE SURVEYOR.



REVISIONS		
NO.	DESCRIPTION	DATE BY
1		
2		
3		
4		
5		
6		
7		
8		

THE METROPOLITAN CORPORATION OF GREATER WINNIPEG
WATERWORKS & WASTE DISPOSAL DIVISION
 WATERWORKS BRANCH

**54" DIA. AQUEDUCT INTERCONNECTION
 MAIN LINE VALVE CHAMBER
 AND MISC. DETAILS**

APPROVED BY: *[Signature]* CHIEF ENGINEER
 DESIGNED BY: M.M. DATE: 16 OCT. 02.
 CHECKED BY: G.E.B. DATE: 16 OCT. 02.
 DRAWN BY: S.K.
 SCALES: AS NOTED

DRAWING NO. **D-1011**

BID OPPORTUNITY 215-2004

LOCATION APPROVED UNDERGROUND STRUCTURES

BM - ELEV. -

SUPR. U/G STRUCTURES COMMITTEE DATE

NOTE:
LOCATION OF UNDERGROUND STRUCTURES AS SHOWN ARE BASED ON THE BEST INFORMATION AVAILABLE. BUT NO GUARANTEE IS GIVEN THAT ALL EXISTING UTILITIES ARE SHOWN OR THAT THE GIVEN LOCATIONS ARE EXACT. CONFIRMATION OF EXISTENCE AND EXACT LOCATION OF ALL SERVICES MUST BE OBTAINED FROM THE INDIVIDUAL UTILITIES BEFORE PROCEEDING WITH CONSTRUCTION.

NO.	REVISIONS	Y/M/D	BY

DESIGNED BY	MGM	CHECKED BY	
DRAWN BY	WJd	APPROVED BY	
HOR. SCALE	1:500	RELEASED FOR CONSTRUCTION	
VERT. SCALE	1:50		
DATE		DATE	

UMA
 www.umagroup.com
 2004 UMA ENGINEERING LTD. ALL RIGHTS RESERVED.

PROFESSIONAL'S SEAL

CONSULTANT DRAWING NO. D265-182-00

PROFESSIONAL'S SEAL

THE CITY OF WINNIPEG

Winnipeg

BRANCH II AQUEDUCT INTERCONNECTOR - VALVE CHAMBER

HISTORICAL DRAWING (FOR INFORMATION ONLY)

SHEET OF CITY DRAWING NUMBER **D-1011**

REV