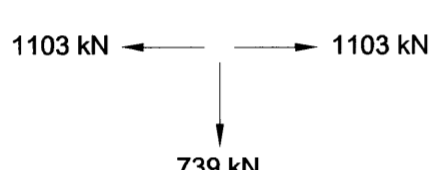
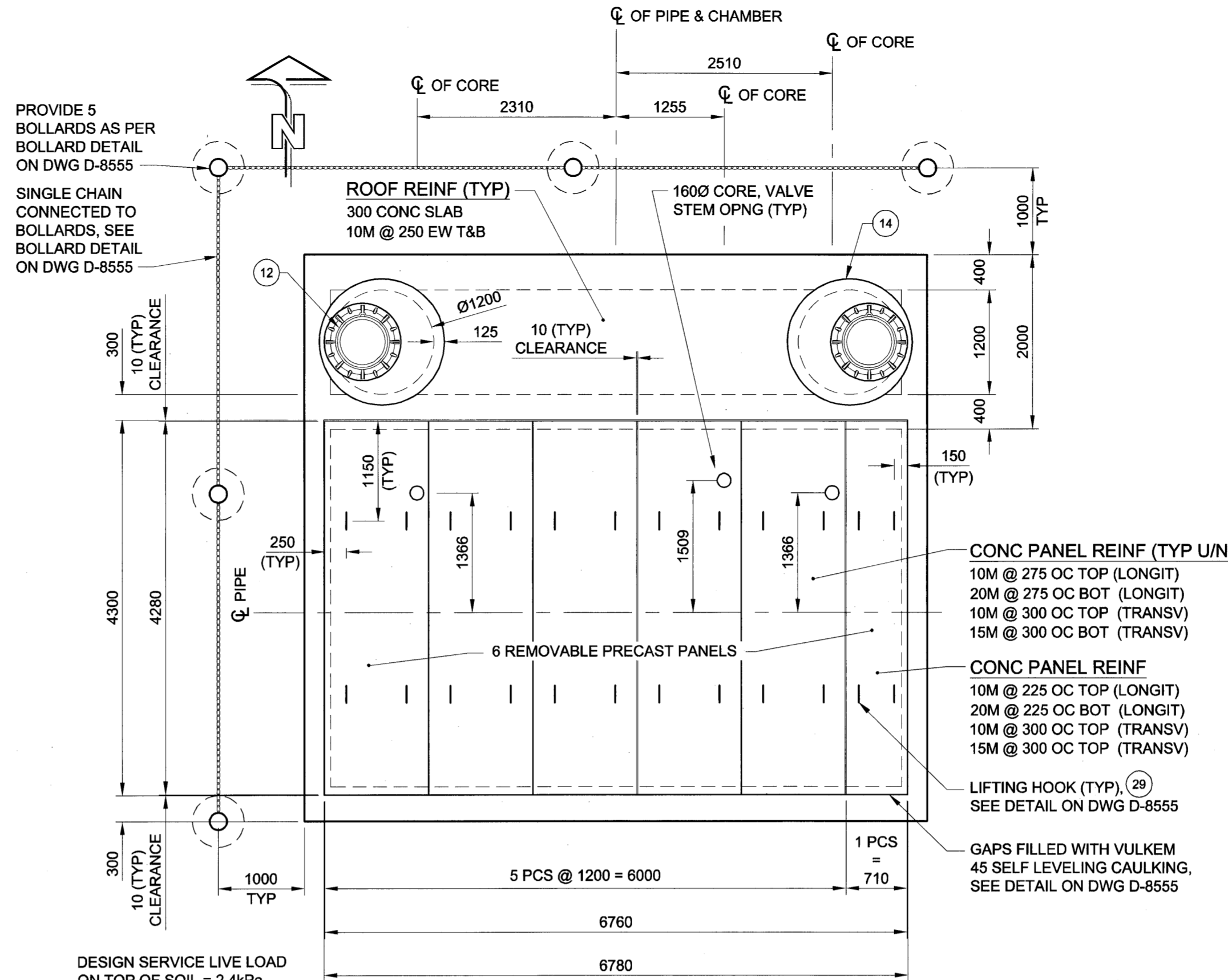


ULTIMATE THRUST BLOCK FORCES

PLAN VIEW

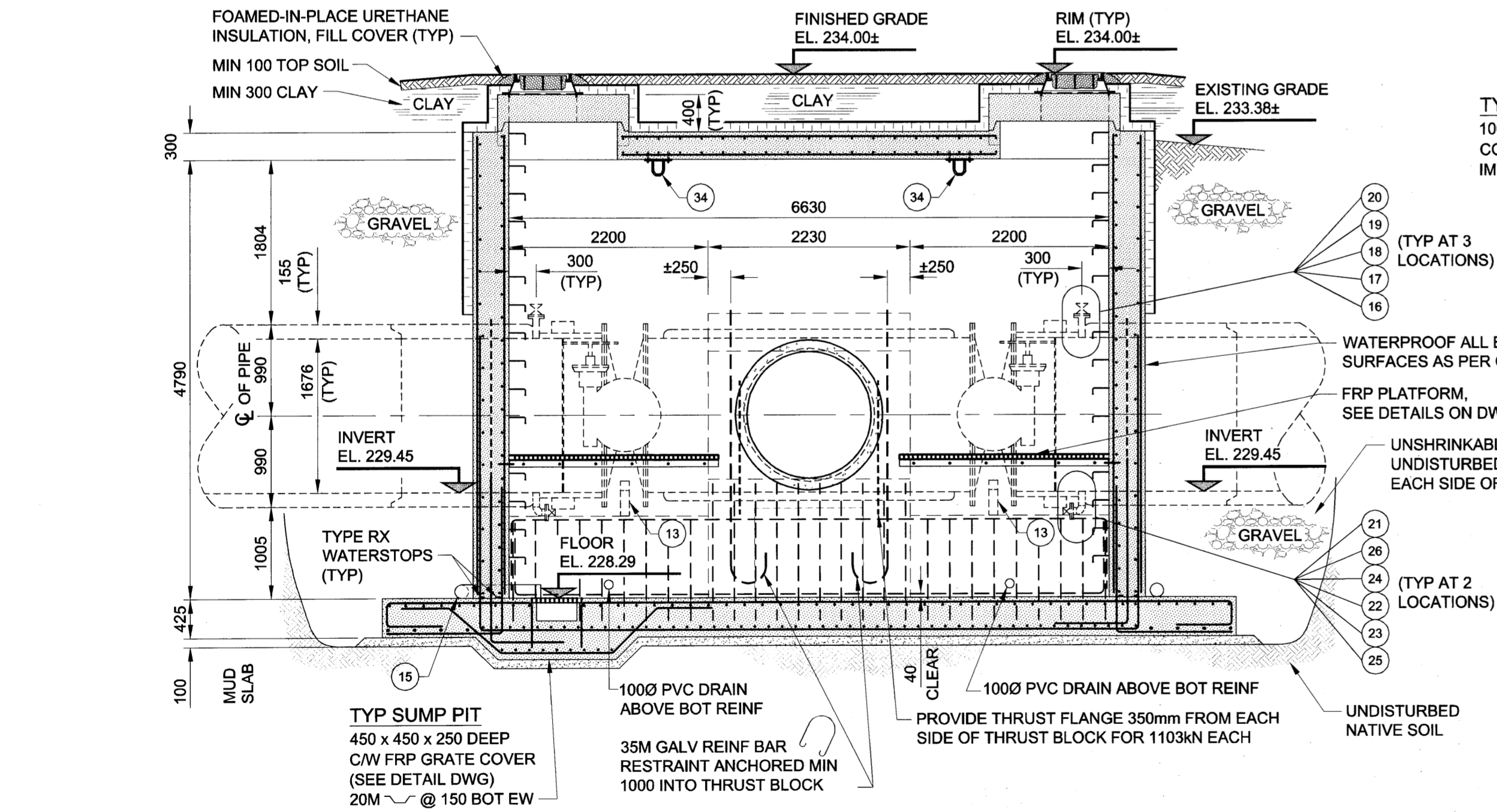


SCALE 1:50



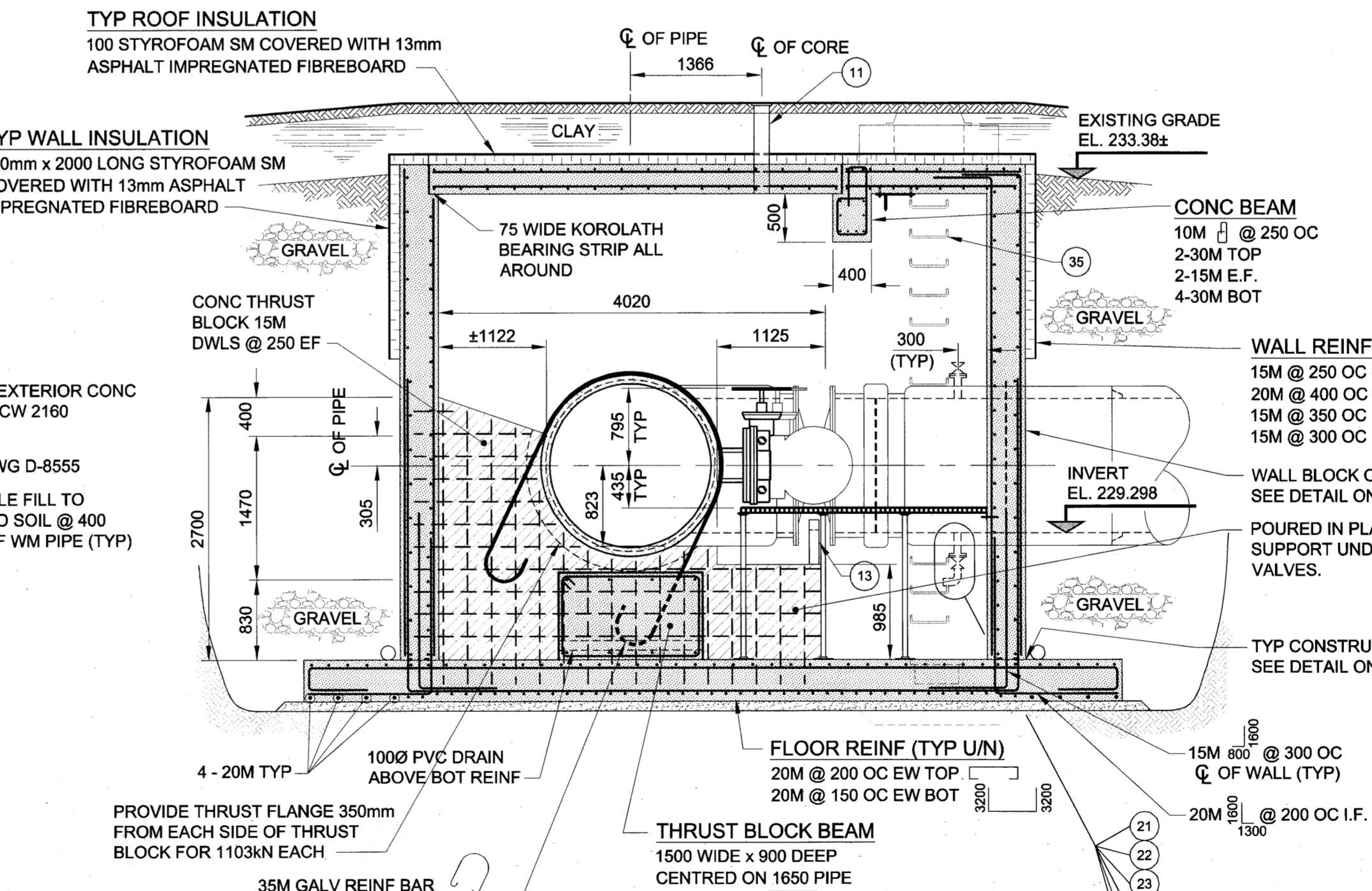
ROOF PLAN

SCALE 1:50



SECTION A

SCALE 1:50



SECTION B

SCALE 1:50

NO.	DESCRIPTION	LENGTH	QNTY
1.	1650Ø PRESTRESSED CONCRETE PRESSURE PIPE WALL PLACE (BELL TO PLAIN END C/W 50mm THREADED OUTLET (TOP) 75mm THREADED OUTLET (BOTTOM))	1906	1
2.	1650Ø PRESTRESSED CONCRETE PRESSURE PIPE WALL PLACE (SPIGOT TO PLAIN END C/W 50mm THREADED OUTLET (TOP) 75mm THREADED OUTLET (BOTTOM))	1906	1
3.	1350Ø PRESTRESSED CONCRETE PRESSURE PIPE WALL PLACE (SPIGOT TO PLAIN END C/W 50mm THREADED OUTLET (TOP) 100mm THREADED OUTLET (BOTTOM))	2460	1
4.	1650Ø SLEEVE COUPLING (250mm LONG x 12mm THICK RING)	-	2
5.	1350Ø SLEEVE COUPLING (250mm LONG x 12mm THICK RING)	-	1
6.	1650Ø CONCRETE PIPE ADAPTER (FLANGE TO PLAIN END)	457	2
7.	1350Ø CONCRETE PIPE ADAPTER (FLANGE TO PLAIN END)	457	1
8.	1650Ø AWWA 504 SHORT BODY FLANGED BUTTERFLY VALVE AND OPERATOR (BY OTHERS)	457	2
9.	1350Ø AWWA 504 SHORT BODY FLANGED BUTTERFLY VALVE AND OPERATOR (BY OTHERS)	381	-
10.	1650Ø x 1650Ø x 1350Ø PRESTRESSED CONCRETE PRESSURE PIPE TEE (FLANGE x FLANGE x FLANGE)	-	-
11.	STANDARD CITY OF WINNIPEG HINGED COVER VALVE BOX CW STEM EXTENSION WITH AWWA NUT	-	3
12.	STANDARD CITY OF WINNIPEG MANHOLE FRAME AND SOLID COVER	-	2
13.	ADJUSTABLE VALVE SUPPORT	-	3
14.	1200mmØ TO 750mmØ ASTM C-76 CLASS II PRECAST CONCRETE REDUCER	-	2
15.	150 PVC WEeping TILE IN FILTER CLOTH SOCK, WITH SOLID PIPE LEAD TO SUMP	29m	-
16.	50mmØ SCHEDULE 40 STEEL NIPPLE (THREADED)	125	3
17.	50mmØ STEEL FLANGE (THREADED)	-	3
18.	50mmØ CAST BRONZE OR BRASS FLANGE (THREADED)	-	3
19.	50mmØ CAST BRONZE OR BRASS NIPPLE (THREADED)	125	3
20.	50mmØ BRONZE GATE VALE (THREADED)	-	3
21.	75mmØ SCHEDULE 40 STEEL NIPPLE (THREADED)	125	3
22.	75mmØ STEEL FLANGE (THREADED)	-	3
23.	75mmØ CAST BRONZE OR BRASS FLANGE (THREADED)	-	3
24.	75mmØ CAST BRONZE OR BRASS NIPPLE (THREADED)	125	3
25.	75mmØ BRONZE GATE VALVE (THREADED)	-	3
26.	75mmØ CAST BRONZE OR BRASS 90° STREET ELBOW (THREADED)	-	3
27.	75mmØ PVC (DWV) 'P' TRAP AND DRAIN CW TEE & 250mm x 100Ø PVC DRAIN	-	1
28.	100mmØ BACKWATER VALVE	-	1
29.	100mmØ CLEAN-OUT	-	1
30.	100mmØ PVC SDR35 DRAIN	2m	1
31.	150mmØx100mmØ REDUCER	-	1
32.	150mmØ PVC SDR35 (SXB)	-	-
33.	LIFTING LUG	-	24
34.	U-BOLT HOOKS	-	2
35.	STANDARD CITY OF WINNIPEG ALUMINUM DRIVE-IN MANHOLE STEPS	-	-

NOTE:
 CLEAR COVER TO REINFORCING SHALL BE 50mm ±12mm FOR REMOVABLE SLABS
 50mm ±12mm FOR CAST-IN-PLACE SLABS AND CAST-IN-PLACE BEAMS AND WALLS.

LOCATION APPROVED UNDERGROUND STRUCTURES

SUPR. U/G STRUCTURES COMMITTEE DATE

NOTE:
 LOCATION OF UNDERGROUND STRUCTURES AS SHOWN ARE BASED ON THE BEST INFORMATION AVAILABLE. BUT NO GUARANTEE IS GIVEN THAT ALL EXISTING UTILITIES ARE SHOWN OR THAT THE GIVEN LOCATIONS ARE EXACT. CONFIRMATION OF EXISTENCE AND EXACT LOCATION OF ALL SERVICES MUST BE OBTAINED FROM THE INDIVIDUAL UTILITIES BEFORE PROCEEDING WITH CONSTRUCTION.

NO.	REVISIONS	YYMMDD	BY

uma
 www.umagroup.com

2003 UMA ENGINEERING LTD. ALL RIGHTS RESERVED.

DESIGNED BY	SBB	CHECKED BY	[Signature]
DRAWN BY	CGC	APPROVED BY	[Signature]
HOR. SCALE	1:50	RELEASED FOR CONSTRUCTION	[Signature]
VERT. SCALE	1:50	DATE	04/04/23

PROFESSIONAL'S SEAL

PROVINCE OF MANITOBA

S.B. BISWANGER

REGISTERED PROFESSIONAL ENGINEER

CONSULTANT DRAWING NO. 02

D265-182-00

THE CITY OF WINNIPEG
 WATER AND WASTE DEPARTMENT

BRANCH II AQUEDUCT INTERCONNECTOR - VALVE CHAMBER

VALVE CHAMBER STRUCTURAL PLANS & SECTIONS

SHEET 2 OF 3

CITY DRAWING NUMBER

REV

D-8554

APEN
 Certificates of Authorization

UMA Engineering Ltd.

No. 256 Expiry: April 30, 2004