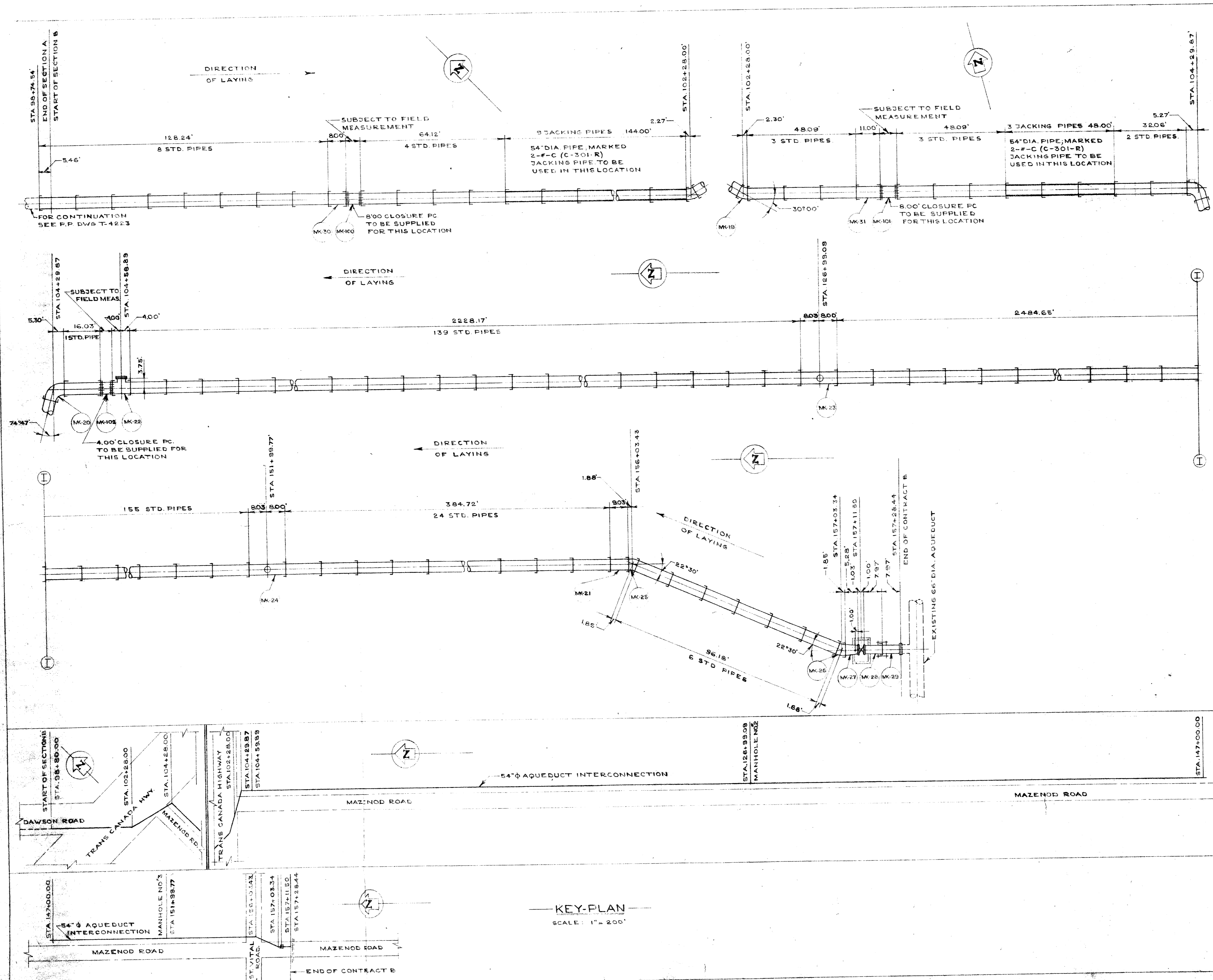
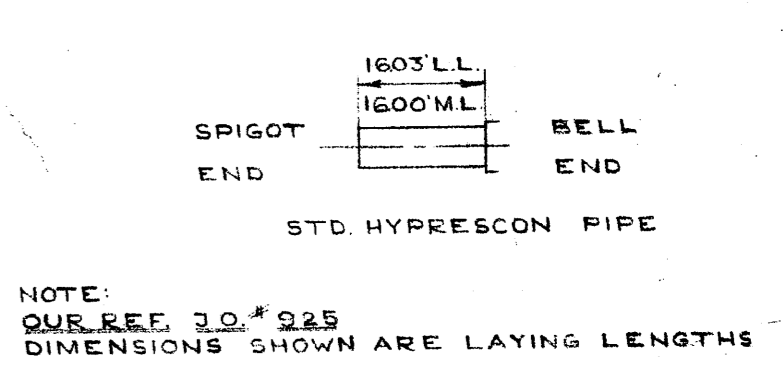


UMA FILE NAME: OVERALL_RX.DWG 2004-04-23 1:27pm Wjd



MARK NO.	DESCRIPTION OF SPECIALS.
19	54" DIA. 30°00' ELBOW DWG. F-3279
20	54" DIA. 74°47' ELBOW DWG. T-3258
21	54" DIA. SHORT PIPE
22	54" X 54" X 42" TEE, S. & S. W. 42" DIA. BL. FL. COMPL. W. STAINLESS STL. BOLTS, NUTS, GASKETS. DWG. T-3256
23, 24	54" DIA. STD. PIPE W. 24" DIA. FL. BR. & BL. FL. COMPL. W. STAINLESS STL. BOLTS, NUTS, GASKETS. DWG. T-3259
25, 26	54" DIA. 22°30' ELBOW DWG. F-3283
27	54" X 42" DIA. REDUCER B. & VICT. 44 ENDS WITH 3" DIA. FL. BR. ON TOP DWG. T-3257
28	42" DIA. SHORT S. & V. 44 ENDS. W. SUBLUGS DWG. F-3280
29	42" DIA. SHORT B. & FL. ENDS. W. SUBLUGS DWG. F-3282
30, 31	54" DIA. SHORT PIPE S. & S. ENDS.
100	54" DIA. CLOSURE (8'-0" CYL.) DWG. T-3244 & T-3247
101	54" DIA. CLOSURE (4'-0" CYL.) DWG. T-3244 & T-3247
102	54" DIA. CLOSURE (4'-0" CYL.) DWG. T-3244 & T-3247

54" DIA. STD. PIPES AWWA C-301 **365** PCS.
54" DIA. STD. JACKING PIPES **12** PCS.



REV.	DATE	DESCRIPTION	BY	CHKD.
A	23-1-83	REV. AS PER APP. DWG	PR	PK
B	18-3-03	SUBLUGS ADDED ON MK 28 & 29	PR	PK

PRESSURE PIPE DIVISION
CANADA IRON FOUNDRIES LTD.
LAYOUT OF 54" DIA. AQUE-DUCT INTERCONNECTION.
SECTION B
METRO WINNIPEG CONTR. #183
SCALE: 1" = 200' DWN. BY: RR DWG. NO. REV.
DATE: 28-12-82 CKD. BY: RN
J.O. # 925 APP. BY: PK T-4224 B

BID OPPORTUNITY 215-2004

LOCATION APPROVED UNDERGROUND STRUCTURES	
SUPR. U/G STRUCTURES COMMITTEE	DATE
NOTE: LOCATION OF UNDERGROUND STRUCTURES AS SHOWN ARE BASED ON THE BEST INFORMATION AVAILABLE. BUT NO GUARANTEE IS GIVEN THAT ALL EXISTING UTILITIES ARE SHOWN OR THAT THE GIVEN LOCATIONS ARE EXACT. CONFIRMATION OF EXISTENCE AND EXACT LOCATION OF ALL SERVICES MUST BE OBTAINED FROM THE INDIVIDUAL UTILITIES BEFORE PROCEEDING WITH CONSTRUCTION.	
NO.	REVISIONS
YYMMDD	BY

uma
www.umagroup.com
2004 UMA ENGINEERING LTD. ALL RIGHTS RESERVED.

DESIGNED BY	MGM	CHECKED BY	
DRAWN BY	Wjd	APPROVED BY	
HOR. SCALE	1:500	RELEASED FOR CONSTRUCTION	
VERT. SCALE	1:50	DATE	

PROFESSIONAL'S SEAL
CONSULTANT DRAWING NO. D265-182-00

THE CITY OF WINNIPEG
Winnipeg
BRANCH II AQUE-DUCT INTERCONNECTOR - VALVE CHAMBER
HISTORICAL DRAWING (FOR INFORMATION ONLY)
SHEET OF
CITY DRAWING NUMBER
F-1017
REV