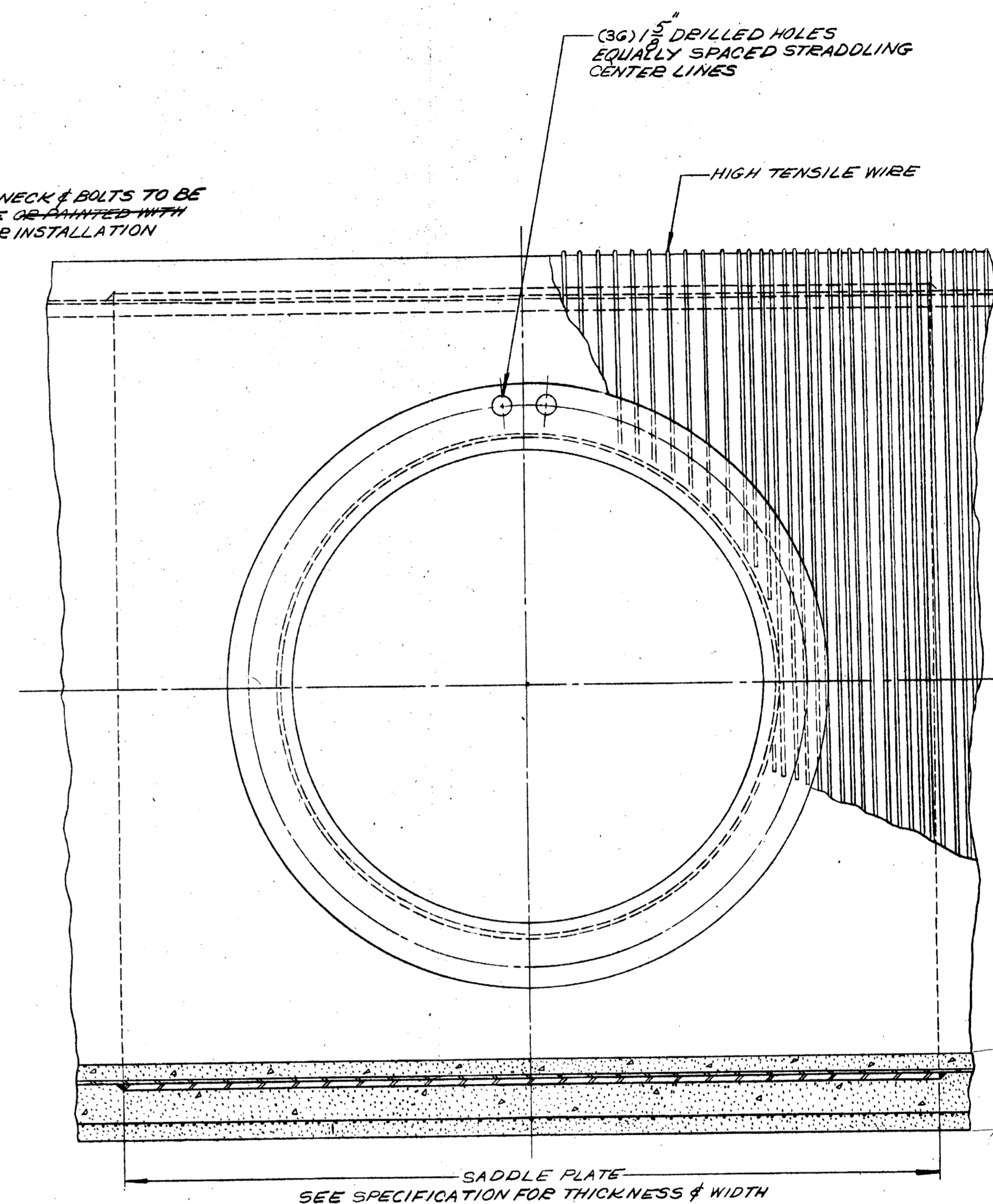
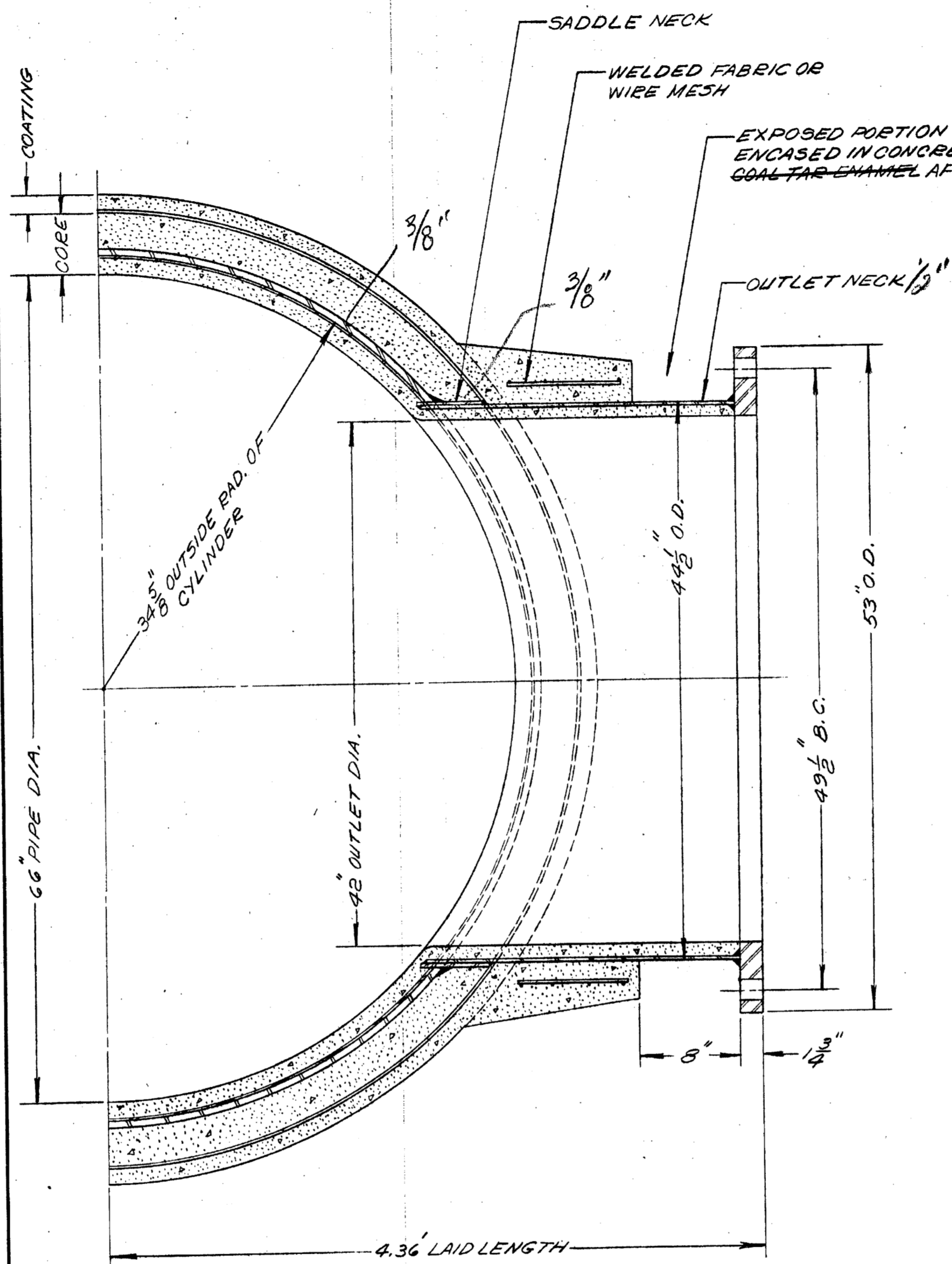


99-0421-2-3



SADDLE PLATE  
SEE SPECIFICATION FOR THICKNESS & WIDTH

PRINTED  
FEB 5 - 1959

NOTE:  
FLANGE CONFORMS TO SPECIFICATION AWWA  
C207-55 DRILLING AND DIAMETER SAME AS  
A.S.A. BIG. 1 (125 PSI CAST IRON)

MICROFILMED MAR 31 1980

LOCK JOINT PIPE COMPANY  
150 RUTLEDGE AVE. EAST ORANGE, N. J.

42" DRILLED FLANGED OUTLET IN  
6.6" PRESTRESSED CONCRETE  
EMBEDDED CYLINDER PIPE.

GREATER WINNIPEG WATER DISTRICT  
APPROVED APR 7 1959  
General Manager and Chief Engineer

SCALE: 1/2" = 1'-0"	DRAWING NUMBER
DR. J.A. 1-27-59	E-21240-66
CH. APP. 2-4-59	

FOR DETAILS, SEE SPECIFICATION SHEET NO. CAN LJ-S8-1-4

REV.	DESCRIPTION	REV.	DESCRIPTION

BID OPPORTUNITY 215-2004

LOCATION APPROVED  
UNDERGROUND STRUCTURES

SUPR. U/G STRUCTURES COMMITTEE DATE

NOTE:  
LOCATION OF UNDERGROUND STRUCTURES AS SHOWN ARE BASED ON THE BEST INFORMATION AVAILABLE. BUT NO GUARANTEE IS GIVEN THAT ALL EXISTING UTILITIES ARE SHOWN OR THAT THE GIVEN LOCATIONS ARE EXACT. CONFIRMATION OF EXISTENCE AND EXACT LOCATION OF ALL SERVICES MUST BE OBTAINED FROM THE INDIVIDUAL UTILITIES BEFORE PROCEEDING WITH CONSTRUCTION.

NO.	REVISIONS	YYMMDD	BY

**uma**  
www.umagroup.com  
2004 UMA ENGINEERING LTD. ALL RIGHTS RESERVED.

DESIGNED BY: MGM  
DRAWN BY: Wjd  
HOR. SCALE: 1:500  
VERT. SCALE: 1:50

CHECKED BY:  
APPROVED BY:  
RELEASED FOR CONSTRUCTION  
DATE

PROFESSIONAL'S SEAL

CONSULTANT DRAWING NO.  
D265-182-00

**THE CITY OF WINNIPEG**

Winnipeg

**BRANCH II AQUEDUCT  
INTERCONNECTOR - VALVE CHAMBER**

HISTORICAL DRAWING  
(FOR INFORMATION ONLY)

SHEET OF  
CITY DRAWING NUMBER  
**F-874**