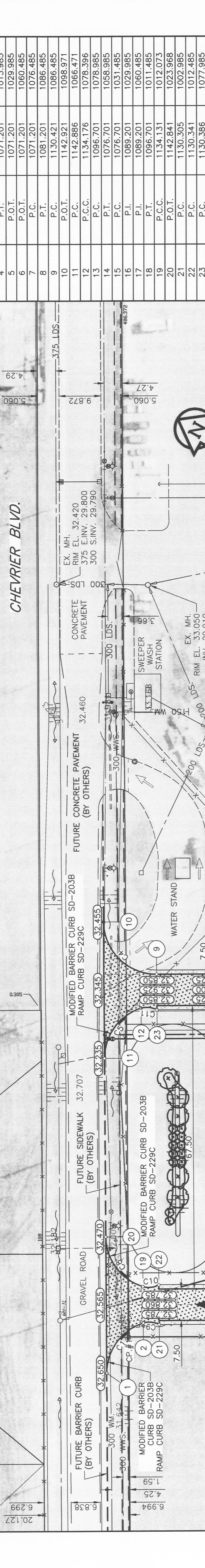
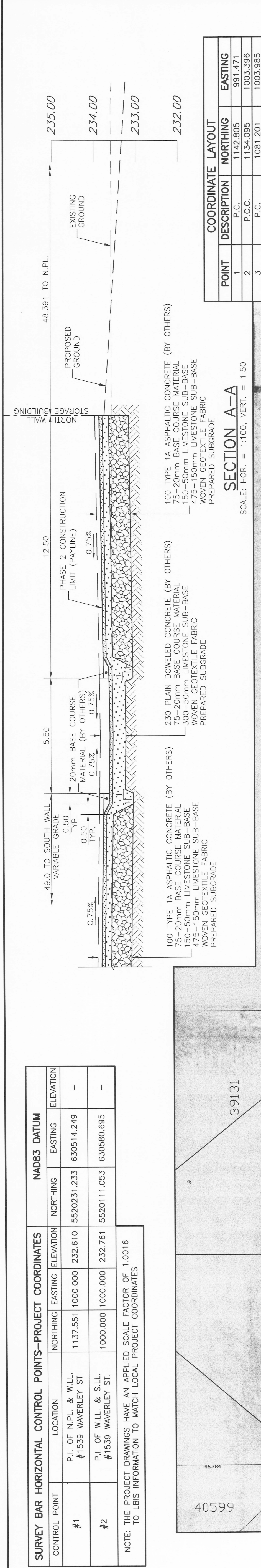


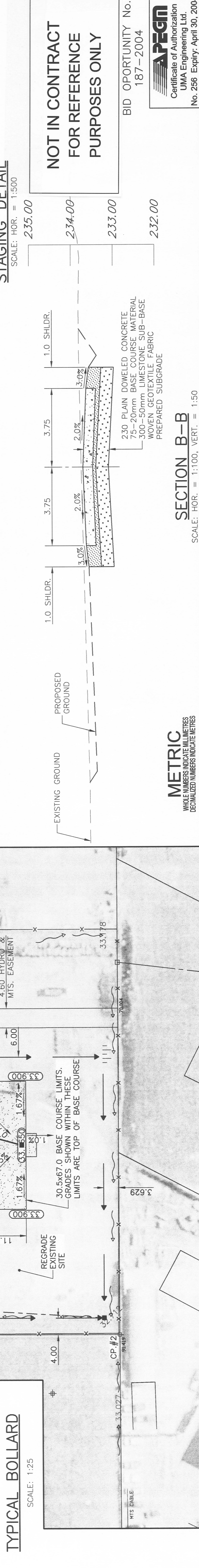
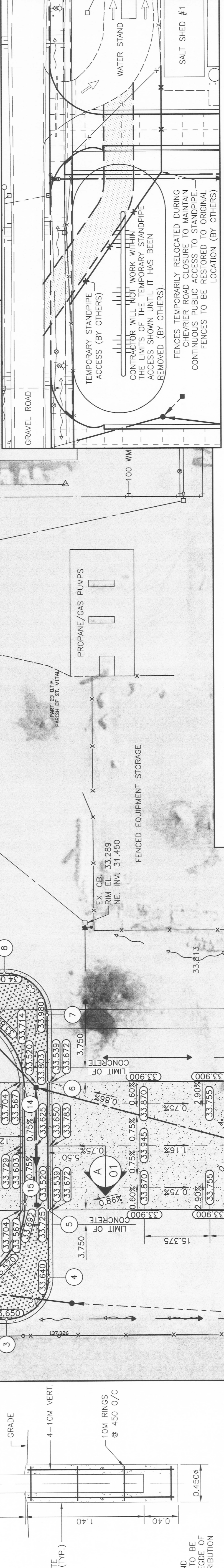
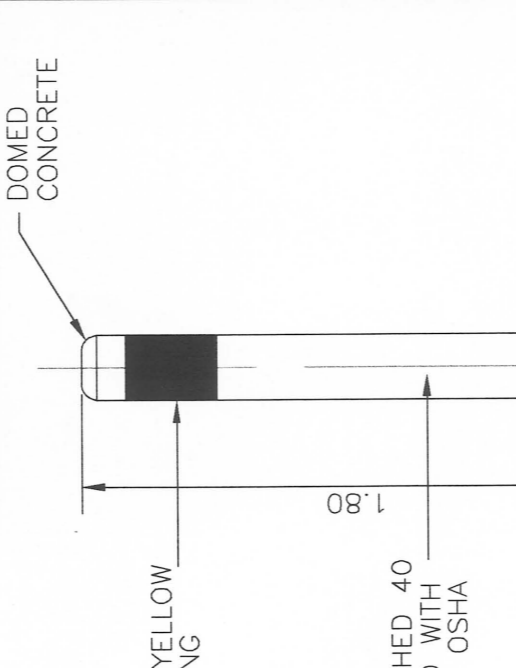
SURVEY BAR HORIZONTAL CONTROL POINTS-PROJECT COORDINATES				NAD83 DATUM			
CONTROL POINT	LOCATION	NORTHING	EASTING	NORTHING	EASTING	ELEVATION	
#1	P.I. OF N.P.L. & W.L.L. #1539 WAVERLEY ST.	1137.551	1000.000	5520231.233	630514.249	-	
#2	P.I. OF W.L.L. & S.L.L. #1539 WAVERLEY ST.	1000.000	1000.000	5520111.053	630580.695	-	

NOTE: THE PROJECT DRAWINGS HAVE AN APPLIED SCALE FACTOR OF 1.0016 TO LBIS INFORMATION TO MATCH LOCAL PROJECT COORDINATES



COORDINATE LAYOUT			
POINT	DESCRIPTION	NORTHING	EASTING
1	P.C.	1142.805	991.471
2	P.C.C.	1134.095	1003.396
3	P.C.	1081.201	1003.985
4	P.T.	1071.201	1013.985
5	P.O.T.	1071.201	1029.985
6	P.O.T.	1071.201	1060.485
7	P.C.	1071.201	1076.485
8	P.T.	1081.201	1086.485
9	P.C.	1130.421	1086.485
10	P.O.T.	1142.921	1098.971
11	P.C.	1142.886	1066.471
12	P.C.C.	1134.176	1078.396
13	P.C.	1096.701	1078.985
14	P.T.	1076.701	1058.985
15	P.C.	1076.701	1031.465
16	P.I.	1089.201	1029.985
17	P.I.	1089.201	1060.485
18	P.T.	1096.701	1011.485
19	P.C.C.	1134.131	1012.073
20	P.O.T.	1142.841	1023.968
21	P.C.	1130.305	1002.985
22	P.C.	1130.341	1012.485
23	P.C.	1130.386	1077.985

CURVE TABLE				
CURVE	LENGTH	RADIUS	DELTA	TANGENT
C1	15.798	7224.52'	9.151	10.000
C2	15.708	10.000	90700.00"	10.000
C3	15.708	10.000	90700.00"	10.000
C4	19.621	12.500	8956.18"	12.487
C5	15.798	12.500	7224.52'	9.151
C6	31.416	20.000	90700.00"	20.000
C7	31.416	20.000	90700.00"	20.000
C8	15.768	12.500	7216.38"	9.128
C9	3.911	5.000	4448.49"	2.062
C10	3.911	5.000	4448.49"	2.062
C11	3.911	5.000	4448.49"	2.062



SECTION A-A
SCALE: HOR. = 1:100, VERT. = 1:50

SECTION B-B
SCALE: HOR. = 1:100, VERT. = 1:50

NOT IN CONTRACT FOR REFERENCE PURPOSES ONLY

BID OPPORTUNITY No. 187-2004

UMA Engineering Ltd.
Certificate of Authorization
UMA Engineering Ltd.
No. 256 Expiry: April 30, 2004

THE CITY OF WINNIPEG
PUBLIC WORKS DEPARTMENT
ENGINEERING DIVISION

SAND and SALT STORAGE FACILITY
at 1539 WAVERLEY STREET
YARD WORKS

PAVEMENT PLAN
HORIZONTAL LAYOUT, GRADES & SECTIONS

CITY DRAWING NUMBER N/A

SHEET 1 OF 6

REV 01

ENGINEER'S SEAL
A. NAGY
REGISTERED PROFESSIONAL ENGINEER
APRIL 21 2004

DESIGNED BY: JCK
DRAWN BY: DID
HOR. SCALE: 1:500
VERTICAL: N/A

CONSULTANT DRAWING NO. 41-0103-0265-366-00

DATE: 04/23/04

LEGEND

○	MANHOLE	PROPOSED
□	CATCH BASIN/CATCH PIT	EXISTING
△	C & G INLET W/BOX	EXISTING
●	TREE	PROPOSED
◆	TEST HOLE	PROPOSED
◆	PROPERTY LINE	PROPOSED
◆	SURVEY BAR	PROPOSED
◆	FENCE	PROPOSED
◆	BACK OF CURB/PAVEMENT ELEVATION	PROPOSED
◆	WATERMAIN SUBRAIN	EXISTING
◆	DITCH	EXISTING

METRIC
WHOLE NUMBERS INDICATE MILLIMETRES
DECIMAL NUMBERS INDICATE METRES