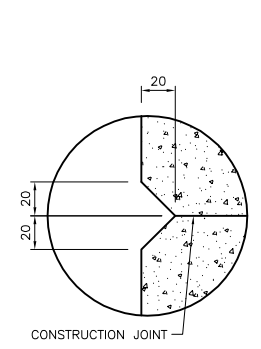
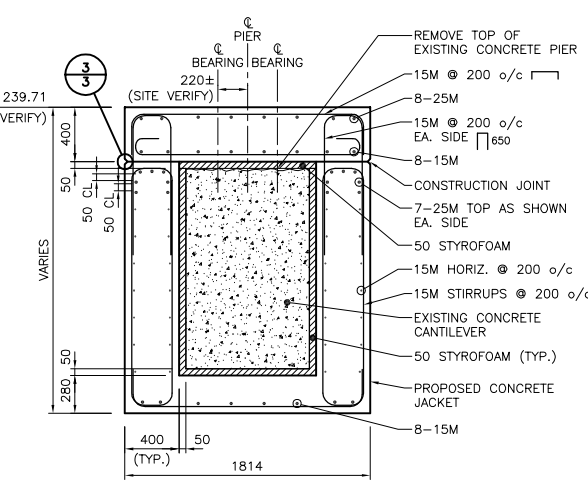
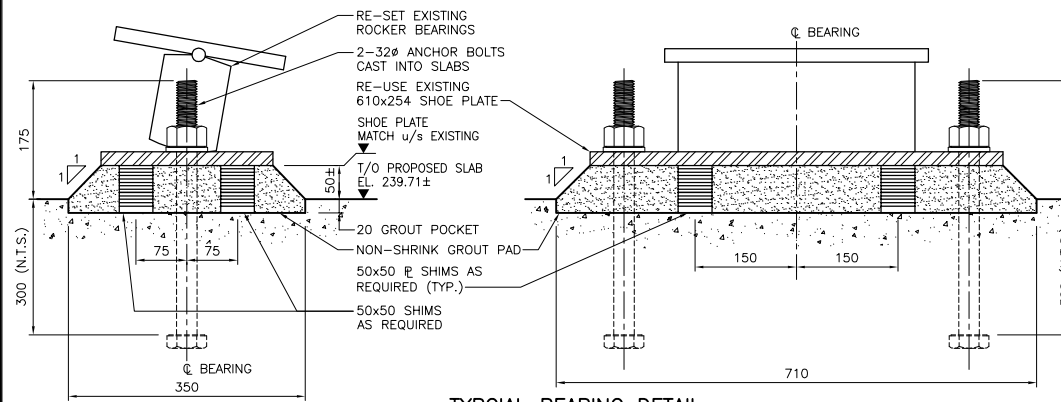
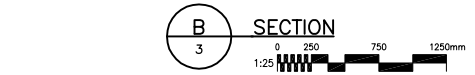
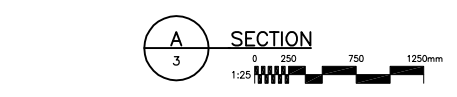
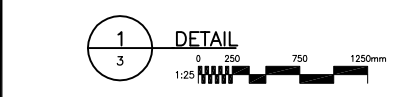
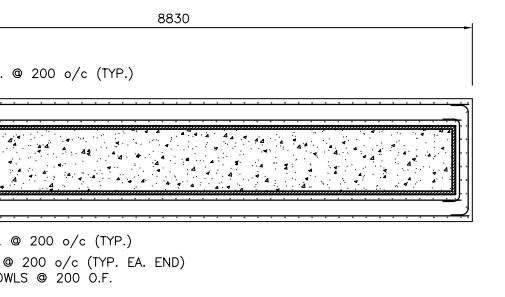


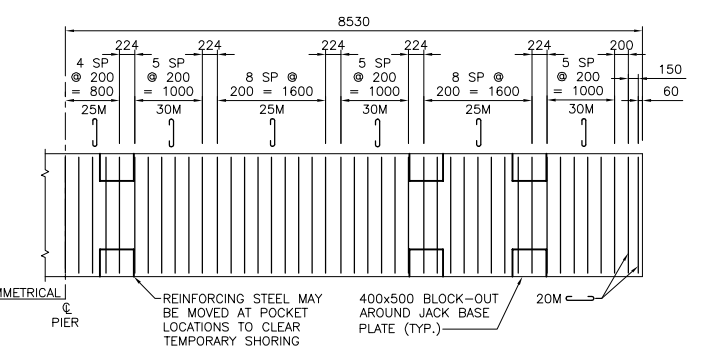
TYP. JACK BASE PLATE DETAIL



PROPOSED PIER No.15



- NOTES:**
- PROPOSED CONSTRUCTION SEQUENCE:
 - CONSTRUCT CONCRETE JACKET UP TO LEVEL OF CONSTRUCTION JOINT.
 - INSTALL JACK BASE PLATES, JACK BEAMS AND JACK ASSEMBLY.
 - JACK BRIDGE JUST ENOUGH TO REMOVE LOAD FROM BEARINGS AND REMOVE ROCKER ASSEMBLY.
 - DEMOLISH TOP OF EXISTING CONCRETE PIER, SALVAGE BEARING SHOE PLATES.
 - BLOCK OUT AROUND JACK ASSEMBLIES AND CAST TOP SLAB.
 - RE-INSTALL BEARINGS, LOWER BRIDGE BACK ONTO BEARINGS, REMOVE ASSEMBLIES, BEAMS, JACK PLATES AND GROUT PADS.
 - FILL IN BLOCK-OUTS WITH REINFORCING STEEL & CONCRETE.
 - TEMPORARY SHORING SHOWN IS SUGGESTED ONLY. THE CONTRACTOR MAY PROPOSE ALTERNATE MEANS OF TEMPORARY SHORING. SUCH ALTERNATE MUST BE DESIGNED BY CONTRACTOR'S PROFESSIONAL ENGINEER REGISTERED IN THE PROVINCE OF MANITOBA.
 - DESIGN OF JACKING DEVICES IS THE CONTRACTOR'S RESPONSIBILITY. JACKS MUST BE DESIGNED BY CONTRACTOR'S REGISTERED PROFESSIONAL ENGINEER TO SUPPORT THE LOADS SHOWN. LOAD SHOWN APPLY ONLY TO THE SHORING CONFIGURATION SHOWN. FOR ALTERNATE SHORING ARRANGEMENTS, OBTAIN APPROVAL AND LOAD INFORMATION FROM THE CONTRACT ADMINISTRATOR.
 - TEMPORARY SHORING MUST BE SECURELY CONNECTED AND BRACED IN ALL DIRECTIONS. BRACING AND CONNECTIONS SHALL BE DESIGNED BY CONTRACTOR'S REGISTERED PROFESSIONAL ENGINEER IN THE PROVINCE OF MANITOBA.
 - ALL CONCRETE SURFACES SHALL RECEIVE PIGMENTED CONCRETE SEALER.
 - INFORMATION FOR RE-SETTING ROCKER BEARINGS WILL BE PROVIDED BY THE CONTRACT ADMINISTRATOR.



SECTION OF SLAB BOT. TRANSVERSE REINFORCING

V:\1317\win\13170070 - Disraeli Overpass Rehab\Coord\03 - Revised Set - 04/01/04\Cell-4-415.dwg
 2004-05-11 04:01PM By: jhannam



LOCATION APPROVED UNDERGROUND STRUCTURES		B.M. ELEV.
SUPV. U/G STRUCTURES COMMITTEE	DATE	
NOTE: LOCATION OF UNDERGROUND STRUCTURES AS SHOWN ARE BASED ON THE BEST INFORMATION AVAILABLE BUT NO GUARANTEE IS GIVEN THAT ALL EXISTING UTILITIES ARE SHOWN OR THAT THE GIVEN LOCATIONS ARE EXACT. CONFIRMATION OF EXISTENCE AND EXACT LOCATION OF ALL SERVICES MUST BE OBTAINED FROM THE INDIVIDUAL UTILITIES BEFORE PROCEEDING WITH CONSTRUCTION.		

DESIGNED BY	K.S.B.	CHECKED BY	M.J.B.
DRAWN BY	J.M.B.	APPROVED BY	M.J.B.
HOR. SCALE:	AS SHOWN	ACCEPTED BY:	
VERTICAL:		DATE	
NO. REVISIONS	DATE	BY	DATE
2	ISSUED FOR TENDER & CONSTRUCTION	04.04.10	
1	ISSUED FOR CLIENT REVIEW	04.02.27	M.J.B.

Stantec Consulting Ltd.
 905 Waverley Street, Winnipeg, Manitoba
 Tel 204-489-5900 Fax 204-453-9012

DESIGNED BY: K.S.B. CHECKED BY: M.J.B.
 DRAWN BY: J.M.B. APPROVED BY: M.J.B.

HOR. SCALE: AS SHOWN
 VERTICAL: ACCEPTED BY: DATE

ENGINEER'S SEAL
ORIGINAL SEALED BY M.L. BOISSONNEAULT P. ENG. 04/05/11
CONSULTANT DRAWING NO. COW-6-615

THE CITY OF WINNIPEG
 PUBLIC WORKS DEPARTMENT
 ENGINEERING DIVISION

DISRAELI OVERPASS
 SUBSTRUCTURE REHABILITATION

PIER 15 REHABILITATION WORKS

SHEET 3 OF 4
 CAD FILE DRAWING NUMBER
 COW-6-615
 CITY DRAWING NUMBER
 B112-04-06