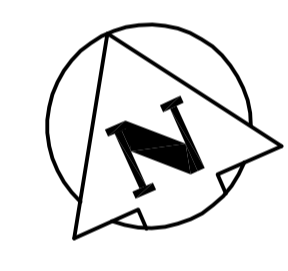
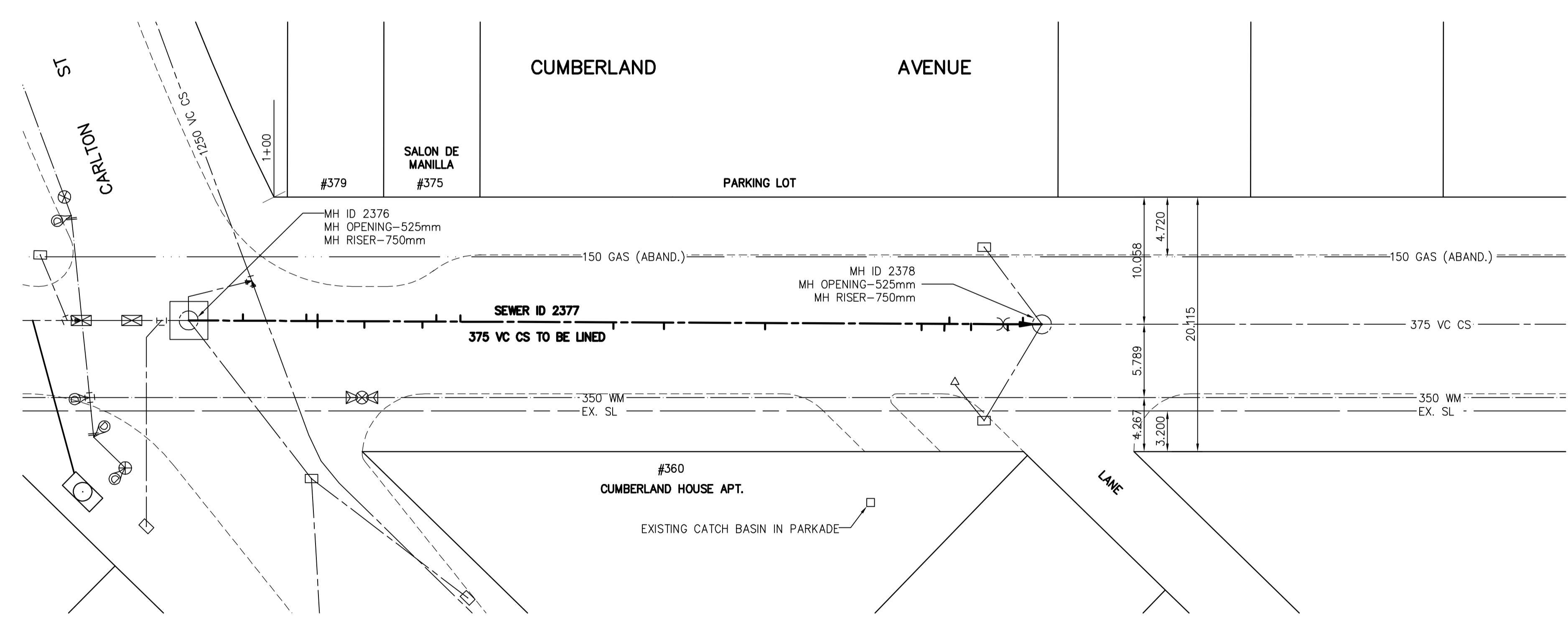


Sewer Junction Information			
MH @ Carlton Street (2376) to 1st MH East of Carlton Street (2378)			
Distance from MH @ Carlton Street (2376)			
4.2	East 150 mm Dia.	North	JX
9.3	East 200 mm Dia.	North	CXI
10.2	East 200 mm Dia.	North	CX
10.2	East 200 mm Dia.	South	JN
13.9	East 200 mm Dia.	South	CX
18.5	East 150 mm Dia.	South	JX
19.6	East 150 mm Dia.	North	JN
21.5	East 150 mm Dia.	North	CN
33.6	East 150 mm Dia.	South	JN
37.6	East 150 mm Dia.	South	JN
45.6	East 150 mm Dia.	South	JN
58.0	East 200 mm Dia.	South	CXI
59.8	East 200 mm Dia.	South	CXI
60.2	East 150 mm Dia.	North	CXI
61.9	East 150 mm Dia.	South	JN
64.8	East 250 mm Dia.	South	JX
66.0	East 150 mm Dia.	North	JN
68.0	East 250 mm Dia.	South	JN

SEWER SERVICE INFORMATION

ADDRESS	SIZE	PROPERTY LINE LOCATION
#360 CUMBERLAND AVE* RESIDENTIAL	N/A	9.90m W of E lot line
#375 CUMBERLAND AVENUE COMMERCIAL	N/A	3.70m W of E lot line
#379 CUMBERLAND AVENUE	N/A	N/A

* Also has service off Carlton Street. 60.0m S of S lot line.



METRIC
WHOLE NUMBERS INDICATE MILLIMETRES
DECIMALIZED NUMBERS INDICATE METRES

WARNING

IF POWER EQUIPMENT OR EXPLOSIVES ARE TO BE USED FOR EXCAVATION ON THIS PROJECT THE CONTRACTOR MUST:
1) NOTIFY THE GAS COMPANY OF THE PROPOSED LOCATION OF EXCAVATION.
2) TAKE PRECAUTION TO AVOID DAMAGE TO GAS COMPANY INSTALLATIONS.
SEE PROVINCIAL REGULATION 140/92 FOR DETAILS

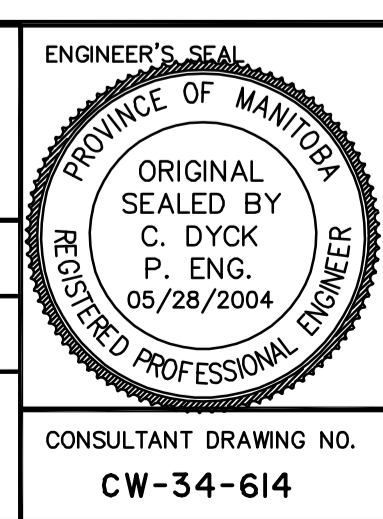
150 WM	WATERMAIN	150 WM	HYDRO	150 WM	WATERMAIN	150 WM
+	HYDRANT	+	M.T.S.	+	HYDRANT, VALVE	+
+	VALVE	+	CONCRETE	+	LAND DRAINAGE SEWER	+
+	LAND DRAINAGE SEWER	+	ASPHALT	+	WASTE WATER SEWER	+
+	WASTE WATER SEWER	+	SIDEWALK	+	Q PROFILE	+
+	MANHOLE	+	PROPERTY LINE	+	NORTH OR WEST GUTTER	+
+	CATCH BASIN	+	SURVEY BAR	+	SOUTH OR EAST GUTTER	+
+	CURB INLET	+	DITCH	+	NORTH OR WEST IP	+
+	JUNCTIONS	+	ELEVATION	+	SOUTH OR EAST IP	+
+	CULVERT	+		+	NORTH OR WEST DITCH	+
+	GAS	+		+	SOUTH OR EAST DITCH	+
+	LEGEND-PLAN	+	LEGEND-PLAN	+	LEGEND-PROFILE	+
+	PROPOSED	+	EXISTING	+	PROPOSED	+

LOCATION APPROVED UNDERGROUND STRUCTURES
SUPV. U/G STRUCTURES COMMITTEE DATE
NOTE:
LOCATION OF UNDERGROUND STRUCTURES AS SHOWN ARE BASED ON THE BEST INFORMATION AVAILABLE BUT NO GUARANTEE IS GIVEN THAT ALL EXISTING UTILITIES ARE SHOWN OR THAT THE GIVEN LOCATIONS ARE EXACT. CONFIRMATION OF EXISTENCE AND EXACT LOCATION OF ALL SERVICES MUST BE OBTAINED FROM THE INDIVIDUAL UTILITIES BEFORE PROCEEDING WITH CONSTRUCTION.

B.M. ELEV.	NO.	REVISIONS	DATE	BY

Stantec Consulting Ltd.
905 Waverley Street, Winnipeg, Manitoba
Tel 204-489-5900 Fax 204-453-9012

DESIGNED BY: W.W.B.	CHECKED BY: C.L.D.
DRAWN BY: J.McD.	APPROVED BY: C.L.D.
HOR. SCALE: 1:250	RELEASED FOR CONSTRUCTION: ORIGINAL SIGNED BY KEN TURKO
VERTICAL: 1:50	DATE 05/28/2004



THE CITY OF WINNIPEG
WATER AND WASTE DEPARTMENT
ENGINEERING DIVISION

CUMBERLAND AVENUE
MH AT CARLTON ST (E PL) TO 1ST MH E OF CARLTON ST
STA 0+93 246 TO STA 1+60 759
2004 SEWER RENEWAL BY CIPP LINING

CONSULTANT DRAWING NO. CW-34-614

SHEET 1 OF 7
CAD FILE DRAWING NUMBER 2004 Cumberland.dwg
CITY DRAWING NUMBER 05435

V:\112\waste\11102020 - 2004 CIP Renewal - Design\A001\2004 Cumberland.dwg 2004-05-28 12:49PM Efc gtlus