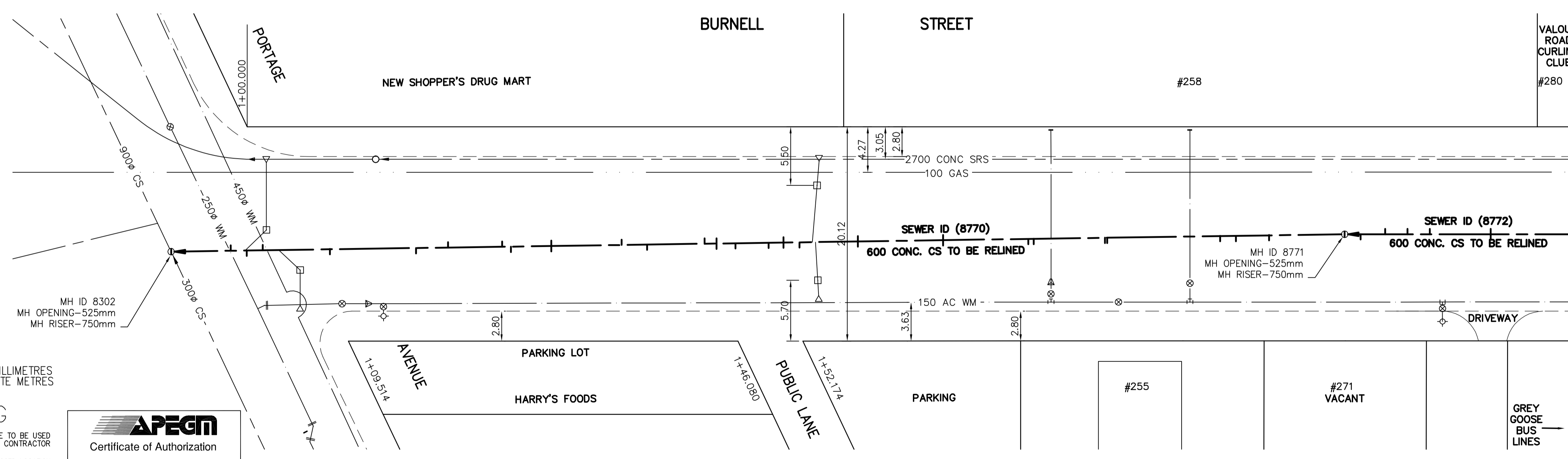
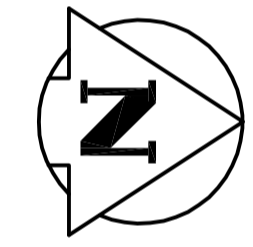


MATCH LINE 2+25

MATCH LINE 2+25  
SEE DWG. CW-30-614

Sewer Junction Information (8770)			
1st MH North of Portage Ave. (8771) to MH at Portage Ave. (8302)			
Distance from MH (8771) to 1st MH North of Portage Ave.			
5.60m	South 150 mm Dia.	West	CN
7.1m	South 150 mm Dia.	East	CN
8.60m	South 150 mm Dia.	West	CN
14.90m	South 150 mm Dia.	East	CN
23.0m	South 150 mm Dia.	East	CN
26.0m	South 150 mm Dia.	West	CN
31.10m	South 150 mm Dia.	West	CN
31.9m	South 150 mm Dia.	East	CN
35.70m	South 150 mm Dia.	West	CN
35.70m	South 150 mm Dia.	East	CN
42.30m	South 150 mm Dia.	West	CN
44.70m	South 150 mm Dia.	East	CN
50.10m	South 200 mm Dia.	West	CNI
51.20m	South 200 mm Dia.	East	CN
51.20m	South 150 mm Dia.	West	CN
53.0m	South 150 mm Dia.	East	CN
56.10m	South 200 mm Dia.	East	CN
57.50m	South 150 mm Dia.	East	CNI
57.50m	South 150 mm Dia.	West	CN
59.0m	South 150 mm Dia.	East	CN
64.50m	South 150 mm Dia.	East	CN
64.50m	South 150 mm Dia.	West	CN
72.50m	South 150 mm Dia.	East	CN
72.50m	South 150 mm Dia.	West	CN
80.50m	South 150 mm Dia.	East	CN
81.0m	South 150 mm Dia.	East	CN
87.70m	South 150 mm Dia.	East	CN
87.90m	South 150 mm Dia.	East	CN
98.50m	South 150 mm Dia.	East	CN
100.0m	South 150 mm Dia.	East	CN
103.10m	South 150 mm Dia.	East	CN



**METRIC**  
WHOLE NUMBERS INDICATE MILLIMETRES  
DECIMALIZED NUMBERS INDICATE METRES

**WARNING**

IF POWER EQUIPMENT OR EXPLOSIVES ARE TO BE USED FOR EXCAVATION ON THIS PROJECT THE CONTRACTOR MUST:  
1) NOTIFY THE GAS COMPANY OF THE PROPOSED LOCATION OF EXCAVATION.  
2) TAKE PRECAUTION TO AVOID DAMAGE TO GAS COMPANY INSTALLATIONS.  
SEE PROVINCIAL REGULATION 140/92 FOR DETAILS.

**APEGM**  
Certificate of Authorization  
Stantec Consulting Ltd.  
No. 1301 Expiry: April 30, 2005

**SEWER SERVICE INFORMATION**

ADDRESS	SIZE	PROPERTY LINE LOCATION
#255 BURNELL STREET	N/A	2.1m N of S lot line
#258 BURNELL STREET	N/A	N/A
#271 BURNELL STREET VACANT	N/A	N/A
#280 BURNELL STREET BUSINESS	150 mm	9.15m N of S lot line

EXISTING	LEGEND-PLAN	PROPOSED	EXISTING	LEGEND-PLAN	PROPOSED	EXISTING	LEGEND-PROFILE	PROPOSED
150 WM	WATERMAIN	150 WM	HYDRO	150 WM	WATERMAIN	150 WM	WATERMAIN	150 WM
+	HYDRANT	+	M.T.S.	+	HYDRANT, VALVE	+	HYDRANT, VALVE	+
⊗	VALVE	⊗	CONCRETE	⊗	LAND DRAINAGE SEWER	⊗	LAND DRAINAGE SEWER	⊗
300 LDS	LAND DRAINAGE SEWER	300 LDS	ASPHALT	300 LDS	WASTE WATER SEWER	300 LDS	WASTE WATER SEWER	300 LDS
250 WWS	WASTE WATER SEWER	250 WWS	SIDEWALK	250 WWS	WASTE WATER SEWER	250 WWS	WASTE WATER SEWER	250 WWS
○	MANHOLE	○	PROPERTY LINE	○	NORTH OR WEST GUTTER	○	NORTH OR WEST GUTTER	○
□	CATCH BASIN	□	SURVEY BAR	□	SOUTH OR EAST GUTTER	□	SOUTH OR EAST GUTTER	□
▽	CURB INLET	▽	DITCH	▽	NORTH OR WEST IP	▽	NORTH OR WEST IP	▽
+	JUNCTIONS	+	ELEVATION	+	SOUTH OR EAST IP	+	SOUTH OR EAST IP	+
+	CULVERT	+		+	NORTH OR WEST DITCH	+	NORTH OR WEST DITCH	+
+	GAS	+		+	SOUTH OR EAST DITCH	+	SOUTH OR EAST DITCH	+
+	LEGEND-PLAN	+	LEGEND-PLAN	+	LEGEND-PROFILE	+	LEGEND-PROFILE	+

**LOCATION APPROVED UNDERGROUND STRUCTURES**  
SUPV. U/G STRUCTURES COMMITTEE DATE \_\_\_\_\_  
NOTE: LOCATION OF UNDERGROUND STRUCTURES AS SHOWN ARE BASED ON THE BEST INFORMATION AVAILABLE BUT NO GUARANTEE IS GIVEN THAT ALL EXISTING UTILITIES ARE SHOWN OR THAT THE GIVEN LOCATIONS ARE EXACT. CONFIRMATION OF EXISTENCE AND EXACT LOCATION OF ALL SERVICES MUST BE OBTAINED FROM THE INDIVIDUAL UTILITIES BEFORE PROCEEDING WITH CONSTRUCTION.

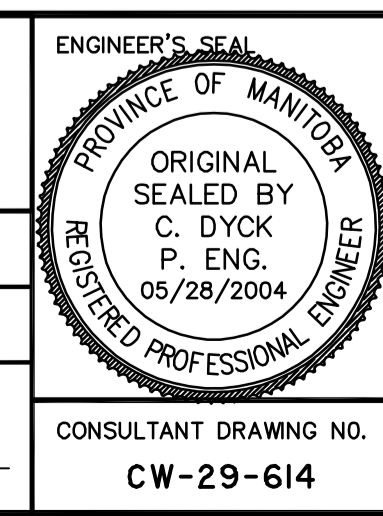
NO.	REVISIONS	DATE	BY

**Stantec Consulting Ltd.**  
905 Waverley Street, Winnipeg, Manitoba  
Tel 204-489-5900 Fax 204-453-9012

DESIGNED BY: W.W.B. CHECKED BY: C.L.D.  
DRAWN BY: J.McD. APPROVED BY: C.L.D.

HOR. SCALE: 1:250  
VERTICAL: 1:50

RELEASED FOR CONSTRUCTION: ORIGINAL SIGNED BY KEN TURKO  
DATE 05/28/2004



**THE CITY OF WINNIPEG**  
WATER AND WASTE DEPARTMENT  
ENGINEERING DIVISION

**BURNELL STREET**  
1ST MH N OF PORTAGE AVE TO MH AT PORTAGE AVE  
STA. 0+92.87 TO STA. 2+03.05  
2004 SEWER RENEWAL BY CIPP LINING

SHEET 3 OF 7  
CAD FILE DRAWING NUMBER 2004 Burnell.dwg  
CITY DRAWING NUMBER 05436

V:\11027220 - 2004 - CIP Renewal - Design\Apegm\2004 Burnell.dwg  
2004-05-28 11:34AM by gilles