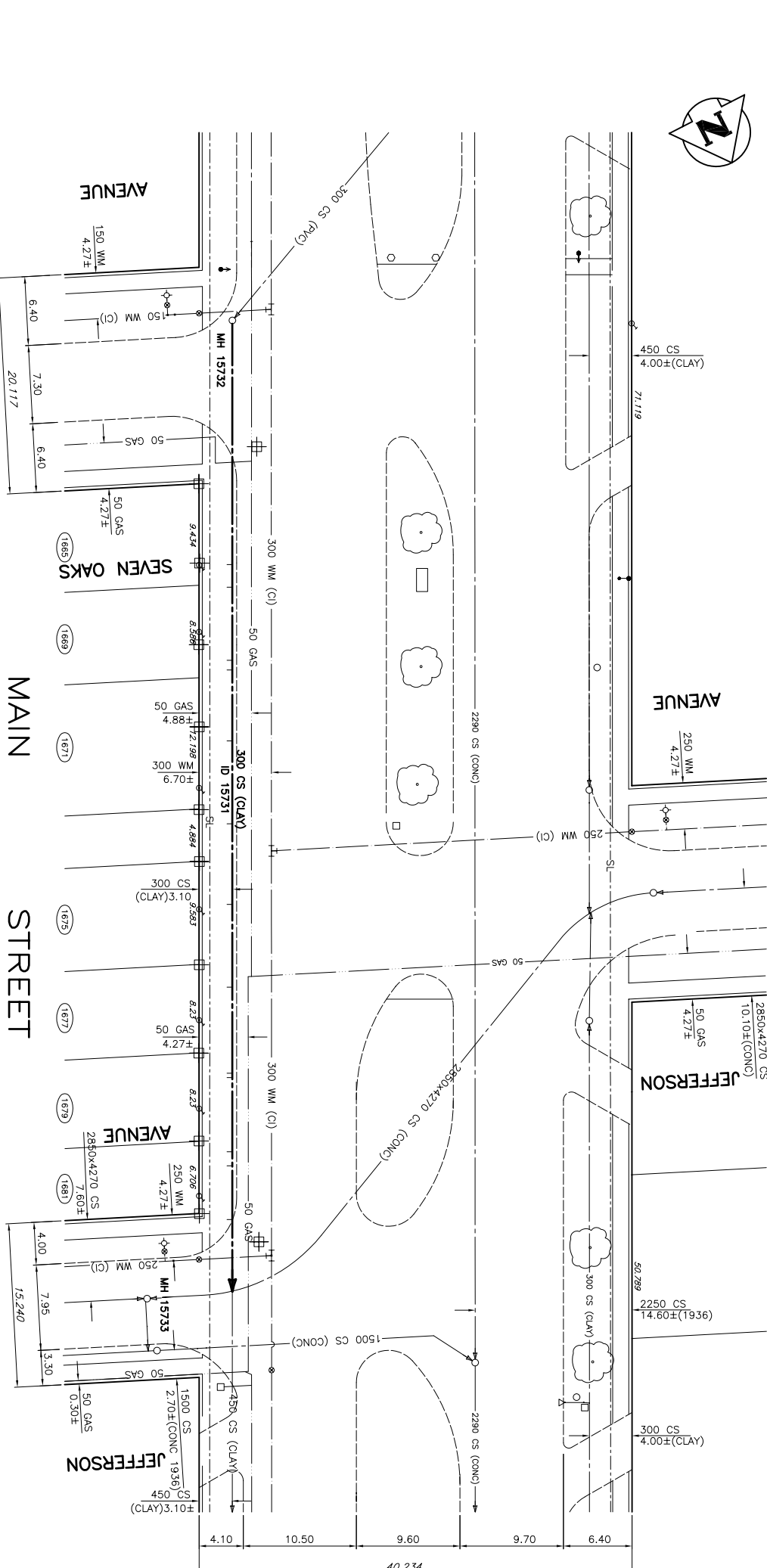


STATIONING	DESCRIPTION	STATUS	REMARKS
231.0	INSTALL CIPP LINER		
230.0	INSTALL CIPP LINER		
229.0	INSTALL CIPP LINER		
228.0	INSTALL CIPP LINER		
227.0	INSTALL CIPP LINER		
226.0	INSTALL CIPP LINER		
225.0	INSTALL CIPP LINER		
224.0	INSTALL CIPP LINER		
223.0	INSTALL CIPP LINER		
231.0	INSTALL CIPP LINER		
230.0	INSTALL CIPP LINER		
229.0	INSTALL CIPP LINER		
228.0	INSTALL CIPP LINER		
227.0	INSTALL CIPP LINER		
226.0	INSTALL CIPP LINER		
225.0	INSTALL CIPP LINER		
224.0	INSTALL CIPP LINER		
223.0	INSTALL CIPP LINER		

ADDRESS	SIZE	PI	JUNCTION/TIE	PROPERTY LINE/TIE	REMARKS
		INV			
			0'-MHI AT		
				0'-"	
No. 1617	150	-			NO RECORDS FOUND
No. 1616	150	-			NO RECORDS FOUND
No. 1615	150	-			NO RECORDS FOUND
No. 1614	150	-			NO RECORDS FOUND
No. 1613	150	-			NO RECORDS FOUND
No. 1612	150	-			NO RECORDS FOUND
No. 1611	150	-			NO RECORDS FOUND
No. 1610	150	-			NO RECORDS FOUND
No. 1609	150	-			NO RECORDS FOUND
No. 1608	150	-			NO RECORDS FOUND
No. 1607	150	-			NO RECORDS FOUND
No. 1606	150	-			NO RECORDS FOUND
No. 1605	150	-			NO RECORDS FOUND
No. 1604	150	-			NO RECORDS FOUND
No. 1603	150	-			NO RECORDS FOUND
No. 1602	150	-			NO RECORDS FOUND
No. 1601	150	-			NO RECORDS FOUND
No. 1600	150	-			NO RECORDS FOUND



MANHOLE NUMBER	TYPE	RISER SIZE	ADDITIONAL INFORMATION
15732	POURED	750 DIA	GROUP TOP 4.0m, INSTALL 10 RINGS, GROUP AND REPLACE BENCHING.
15733	POURED	900 DIA	GROUP TOP 3.0m.

SEWER FUNCTION INFORMATION			
BY VIDEO INSPECTION			
MANHOLE AT	MANHOLE AT	MANHOLE AT	MANHOLE AT
MAIN STREET	MAIN STREET	MAIN STREET	MAIN STREET
MANHOLE AT SEVEN OAKS AVENUE	MANHOLE AT SEVEN OAKS AVENUE	MANHOLE AT SEVEN OAKS AVENUE	MANHOLE AT SEVEN OAKS AVENUE
INSPECTION	SIZE	DIRECTION	QUANTITY
237	150	EAST	CS
236	150	EAST	CS
235	150	EAST	CS
234	150	EAST	CS
233	150	EAST	CS
232	150	EAST	CS
231	150	EAST	CS
230	150	EAST	CS
229	150	EAST	CS
228	150	EAST	CS
227	150	EAST	CS
226	150	EAST	CS
225	150	EAST	CS
224	150	EAST	CS
223	150	EAST	CS

150 WM WATERMAIN	150 RM	BEND	4	ANCHOR TREE	
450 FM LAND DRAINAGE SEWER	450 RM	TEE	4	LEGAL DIMENSION	
300 LBS WASTEWATER SEWER	300 LBS	CURB STOP	1	SURVEY BAR	
250 WS COMBINED SEWER	250 WS	PLUG	3	TRAFFIC SIGNAL	
300 CS FORCE MAIN	300 CS	MANHOLE	0	GAS	
200 FGM FORCE MAIN	200 FGM	CATCH BASIN	0	HYDRO	
JUNCTIONS	+	CURB INLET	1	M/S	
VALVE	+	ADDRESS	+	SIDEWALK	
REDUCER	+	HYDRO POLE	+	CURB	
LEGEND-PLAN	+	LIGHT STANDARD	+		
PROPOSED	+	LEGEND-PLAN	+	PROPOSED	

LOCATION APPROVED UNDERGROUND STRUCTURES

LOCATION APPROVED STRUCTURES

WARDROP Engineering Inc.

ORIGINAL DRAWING REVISION "0" SEALED BY H.A. KATZ 04.05.28

2004 COMBINED SEWER RENEWALS FULL LENGTH LINING BY CIPP METHODS

THE CITY OF WINNIPEG WATER AND WASTE DEPARTMENT

2004 MAIN STREET MANHOLE AT SEVEN OAKS AVENUE TO NODE AT JEFFERSON AVENUE

Winnipeg

1:250

Scale: 1:250

DATE: 04.05.14

DATE ISSUED FOR TENDER: 04.05.28

DATE ISSUED FOR APPROVAL: 04.05.28

DATE CHECKED BY: W. ZIMMER 04.05.28

DATE DESIGNED BY: G.M.D. 04.05.14

DATE DRAWN BY: W. ZIMMER 04.05.28

CONSULTANT DRAWING NO. 0400120000-DWC-C2007

City of Winnipeg, Winnipeg, MB R2X 1A6