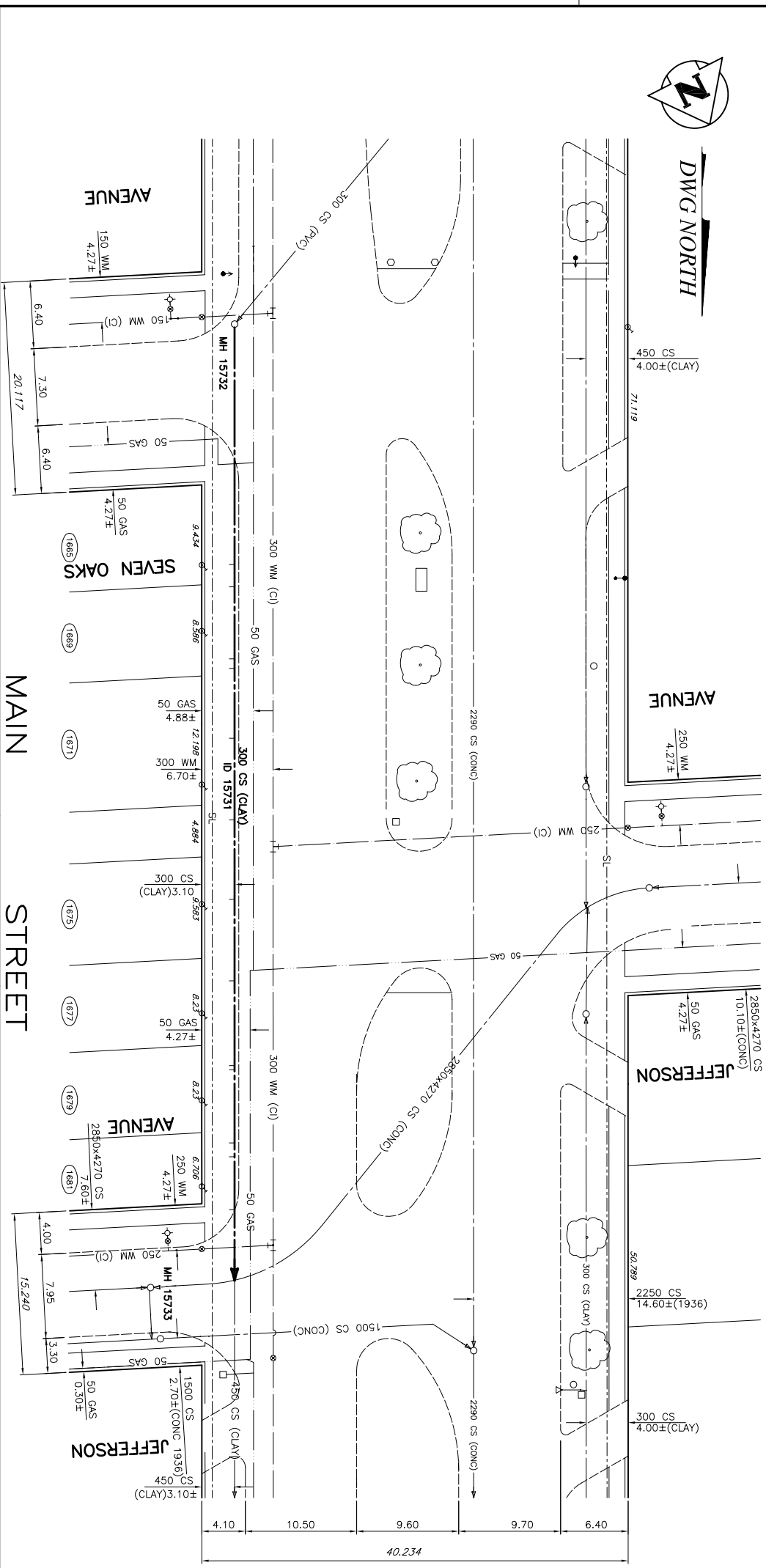


ADDRESS	SIZE	PL	JUNCTION/TIE	PROPERTY LINE TIE	REMARKS
231.0	150	INV		SHORT	LONG
230.0	150		0 - MH AT		0 =
229.0	150			NO RECORDS FOUND	
228.0	150			NO RECORDS FOUND	
227.0	150			NO RECORDS FOUND	
226.0	150			NO RECORDS FOUND	
225.0	150			NO RECORDS FOUND	
224.0	150			NO RECORDS FOUND	
223.0	150			NO RECORDS FOUND	



DWG NORTH



SEWER JUNCTION INFORMATION
BY VIDEO INSPECTION
MAIN STREET
NORTH DIRECTION

REMARKS	SIZE	DIRECTION	CONNECTOR
212'	150	EAST	CS
248'	150	EAST	JN
314'	150	EAST	CS
371'	150	EAST	JN
438'	150	EAST	CONC
443'	150	EAST	JN
420'	50	EAST	JN
700'	150	EAST	JN
711'	150	EAST	CS
762'	150	EAST	CS
810'	200	EAST	JN

MANHOLE INFORMATION

MANHOLE NUMBER	MANHOLE TYPE	ADDITIONAL INFORMATION
15732	POURED	GROUT TOP 4.0m. INSTALL 10 RUNGS. GROUT AND REINFORCE BEARING.
15733	POURED	GROUT TOP 3.0m.

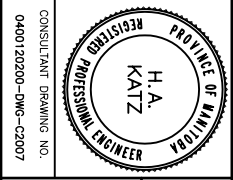
EXISTING	PROPOSED	LEGEND-PLAN
150 WM	150 WM	BEND
400 FM	400 FM	TEE
300 LBS	300 LBS	CURB STOP
250 WMS	250 WMS	PLUG
300 CS	300 CS	MANHOLE
200 FPM	200 FPM	CATCHBASIN
		CURB INLET
		ADDRESS
		HYDRO POLE
		VALVE
		REDUCER
		LEGEND-PLAN

LOCATION APPROVED UNDERGROUND STRUCTURES

NO.	ISSUED FOR TENDER	DATE	BY
1	ISSUED FOR APPROVAL	04.05.28	HAK
2	ISSUED FOR APPROVAL	04.05.25	HAK

WARDROP Engineering Inc.

DESIGNED BY	TY	CHECKED BY	DATE



THE CITY OF WINNIPEG
WATER AND WASTE DEPARTMENT

2004 COMBINED SEWER RENEWALS
FULL LENGTH LINING BY CIPP METHODS

MAIN STREET
MANHOLE AT SEVEN OAKS AVENUE TO
NODE AT JEFFERSON AVENUE

CITY DRAWING NUMBER
SHEET 6 OF 6
C2007

Wardrop Engineering Inc.
No. 195 Expiry: April 30, 2005

Scale: 1:250

Scale bar: 0 to 10m