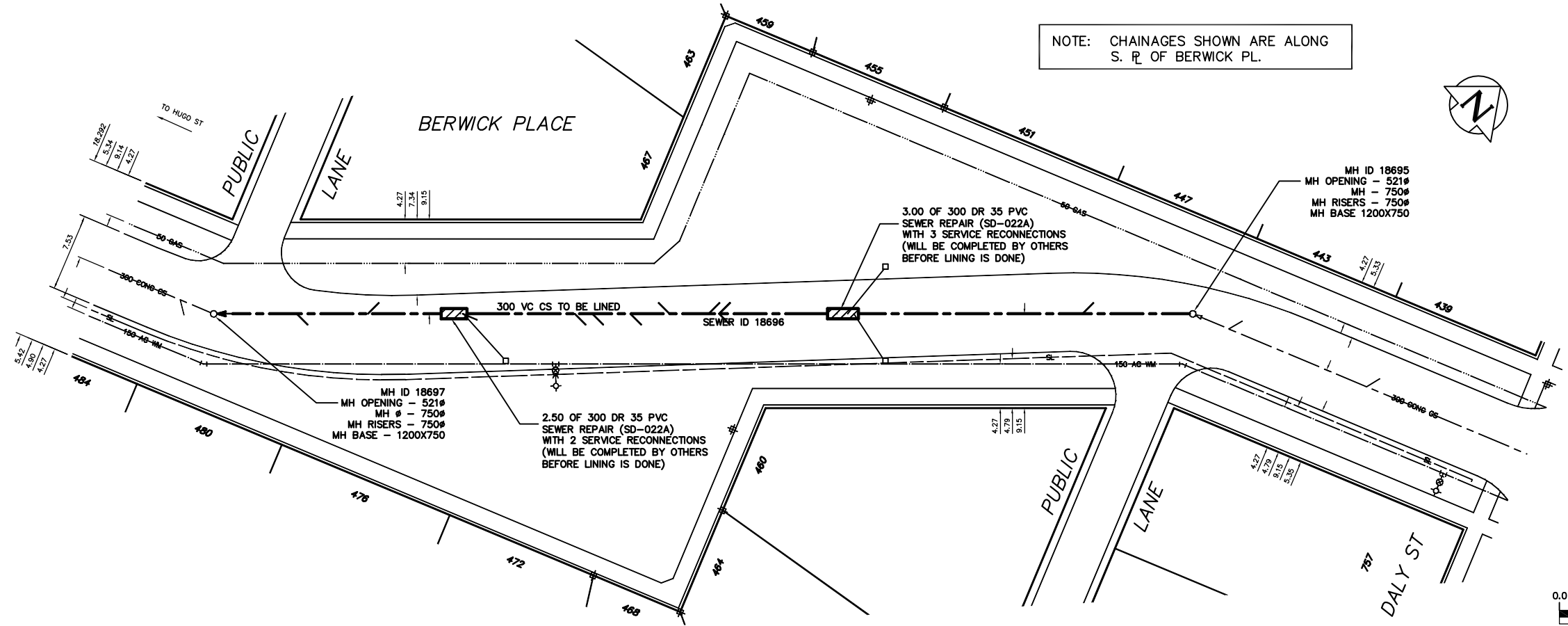


| SEWER SERVICE INFORMATION  |      |                          |
|----------------------------|------|--------------------------|
| ADDRESS                    | SIZE | R. DIST JUNCTION TIE     |
| 757 DALY ST RESIDENTIAL    | -    | SERV. OFF DALY           |
| 439 BERWICK PL RESIDENTIAL | -    | 18.29 E 2ND MH E HUGO    |
| 443 BERWICK PL RESIDENTIAL | -    | 3.81 E 2ND MH E HUGO     |
| 447 BERWICK PL RESIDENTIAL | -    | 94.03 E 1ST MH E HUGO    |
| 451 BERWICK PL RESIDENTIAL | -    | 58.98 E 1ST MH E HUGO    |
| 455 BERWICK PL RESIDENTIAL | -    | 47.24 E 1ST MH E HUGO    |
| 459 BERWICK PL RESIDENTIAL | -    | 47.55 E 1ST MH E HUGO    |
| 460 BERWICK PL RESIDENTIAL | -    | 47.55 E 1ST MH E HUGO    |
| 463 BERWICK PL RESIDENTIAL | -    | 45.11 E 1ST MH E HUGO    |
| 464 BERWICK PL RESIDENTIAL | -    | 43.74 E 1ST MH E HUGO    |
| 467 BERWICK PL RESIDENTIAL | -    | 14.48 E 1ST MH E HUGO    |
| 468 BERWICK PL RESIDENTIAL | -    | NO INFORMATION AVAILABLE |
| 472 BERWICK PL RESIDENTIAL | -    | 8.08 W OF EL             |
| 476 BERWICK PL RESIDENTIAL | -    | 33.83 E 1ST MH E HUGO    |
| 478 BERWICK PL RESIDENTIAL | -    | 7.16 E 1ST MH E HUGO     |
| 480 BERWICK PL RESIDENTIAL | -    | 38.86 E MH E HUGO        |
| 484 BERWICK PL RESIDENTIAL | -    | NO INFORMATION AVAILABLE |

NOTE: CHAINAGES SHOWN ARE ALONG S. R. OF BERWICK PL.

| SEWER JUNCTION INFORMATION * |      |      |      |
|------------------------------|------|------|------|
| SEWER ID 18696               |      |      |      |
| DISTANCE FROM MH ID 18695    |      |      |      |
| 10.70 S                      | 150# | WEST | CN   |
| 32.90 S                      | 150# | EAST | CX   |
| 33.50 S                      | 150# | TOP  | CX   |
| 46.00 S                      | 150# | EAST | CN   |
| 46.00 S                      | 150# | WEST | CN   |
| 47.00 S                      | 150# | WEST | CN   |
| 50.80 S                      | 150# | TOP  | CN   |
| 54.60 S                      | 150# | EAST | CN   |
| 58.30 S                      | 150# | EAST | CN   |
| 60.00 S                      | 150# | EAST | JN   |
| 70.90 S                      | 150# | EAST | JN   |
| 70.90 S                      | 150# | TOP  | CXTI |
| 80.10 S                      | 150# | WEST | JN   |
| 87.00 S                      | 150# | EAST | JN   |

\* INFORMATION FROM SEWER VIDEO INSPECTION



METRIC  
WHOLE NUMBERS INDICATE MILLIMETRES  
DECIMALIZED NUMBERS INDICATE METRES

**WARNING**  
IF POWER EQUIPMENT OR EXPLOSIVES ARE TO BE USED FOR EXCAVATION ON THIS PROJECT THE CONTRACTOR  
1) NOTIFY THE GAS COMPANY OF THE PROPOSED LOCATION OF EXCAVATION.  
2) TAKE PRECAUTION TO AVOID DAMAGE TO GAS COMPANY INSTALLATIONS.  
SEE PROVINCIAL REGULATION 210/72 FOR DETAILS

| 200 WM   | WATERMAIN           | 200 WM   | SL, HYDRO         | 150 WM         | WATERMAIN           | 150 WM   |
|----------|---------------------|----------|-------------------|----------------|---------------------|----------|
| +        | HYDRANT             | +        | MTS               | +              | HYDRANT             | +        |
| o        | VALVE               | o        | TRAFFIC SIGNALS   | o              | VALVE               | o        |
| 525 LDS  | LAND DRAINAGE SEWER | 525 LDS  | GAS               | 300 LDS        | LAND DRAINAGE SEWER | 300 LDS  |
| 375 WWS  | WASTEWATER SEWER    | 375 WWS  | SURVEY BAR        | 250 WWS        | WASTEWATER SEWER    | 250 WWS  |
| o        | MANHOLE             | o        | FENCE             | o              | PROFILE             | o        |
| □        | CATCH BASIN         | □        | POLE - HYDRO, MTS | o              | GROUND ABOVE PIPE   | o        |
| ▽        | CURB INLET          | ▽        | CURB STOP         | o              |                     | o        |
| +        | JUNCTIONS           | +        | GUY ANCHOR        |                |                     |          |
| +        | CULVERT             | +        | LIGHT STANDARD    |                |                     |          |
| +        | ANODE               | +        | TREE              |                |                     |          |
| EXISTING | LEGEND-PLAN         | PROPOSED | EXISTING          | LEGEND-PLAN    | PROPOSED            | EXISTING |
|          |                     |          |                   | LEGEND-PROFILE | PROPOSED            |          |

LOCATION APPROVED UNDERGROUND STRUCTURES

SUPV. U/G STRUCTURES COMMITTEE DATE

NOTE:  
LOCATION OF UNDERGROUND STRUCTURES AS SHOWN ARE BASED ON THE BEST INFORMATION AVAILABLE BUT NO GUARANTEE IS GIVEN THAT ALL EXISTING UTILITIES ARE SHOWN OR THAT THE GIVEN LOCATIONS ARE EXACT. CONFIRMATION OF EXISTENCE AND EXACT LOCATION OF ALL SERVICES MUST BE OBTAINED FROM THE INDIVIDUAL UTILITIES BEFORE PROCEEDING WITH CONSTRUCTION.

| NO. | REVISIONS | DATE | BY |
|-----|-----------|------|----|
|     |           |      |    |
|     |           |      |    |
|     |           |      |    |

CITY OF WINNIPEG  
WATER AND WASTE  
ENGINEERING DIVISION

DESIGNED BY: TW  
CHECKED BY: KZ

DRAWN BY: CJH  
APPROVED BY: KZ

HOR. SCALE: 1:250  
VERTICAL: 1:50

DATE: 2004.05.28

ENGINEER'S SEAL

ORIGINAL SIGNED BY K.R. ZUREK  
04/05/28

BID OPPORTUNITY: 242-2004  
FILENAME: 05442\_05448.dwg  
PLOT DATE: 2004 05 28

THE CITY OF WINNIPEG  
WATER AND WASTE DEPARTMENT

2004 COMBINED SEWER RENEWALS  
BY CIPP LINING  
BERWICK PLACE  
1ST MH W OF DALY STREET TO  
1ST MH E OF HUGO STREET

SHEET 1 OF 13  
CITY DRAWING NUMBER  
05442