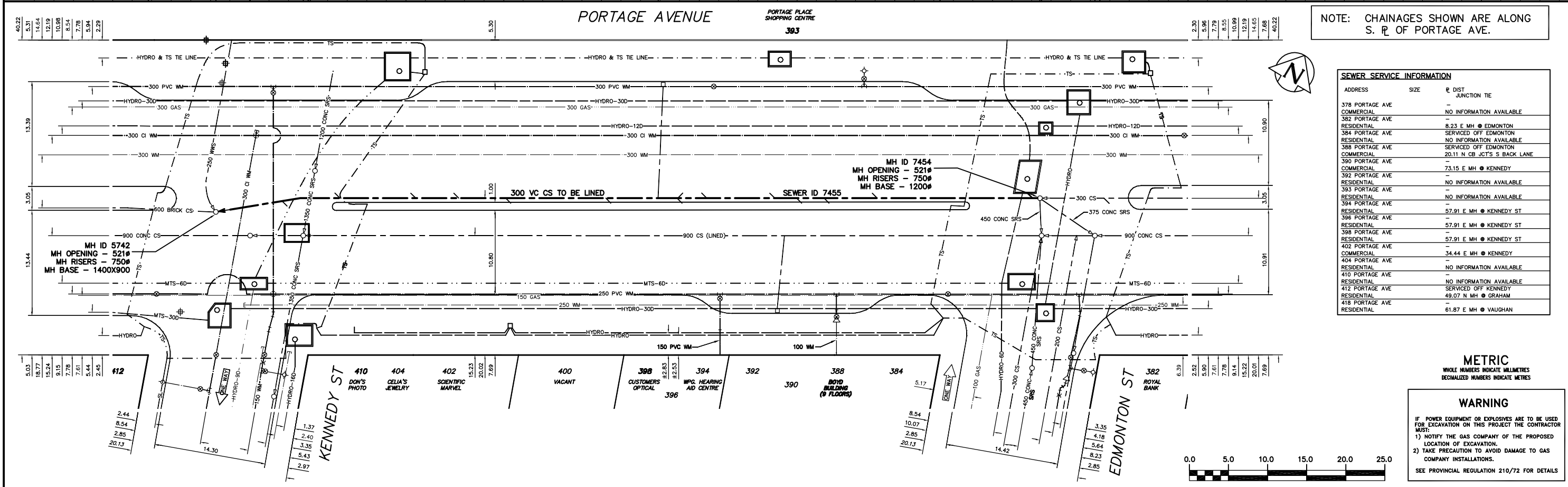


**SEWER JUNCTION INFORMATION \***  
SEWER ID 7455

DISTANCE FROM MH ID 7454

0.90	W	200#	NORTH	CNI
20.80	W	200#	NORTH	JN
27.60	W	200#	SOUTH	JN
31.10	W	200#	SOUTH	CNI
33.90	W	200#	NORTH	CN
42.60	W	300#	NORTH	CNI
46.30	W	150#	NORTH	CNI
46.40	W	150#	SOUTH	CNI
48.80	W	200#	NORTH	JN
55.40	W	250#	SOUTH	JN
68.30	W	200#	SOUTH	CNI
74.30	W	200#	NORTH	CNI
79.80	W	200#	NORTH	JN
89.50	W	150#	NORTH	CN
96.90	W	100#	TOP	CNI

\* INFORMATION FROM SEWER VIDEO INSPECTION



NOTE: CHAINAGES SHOWN ARE ALONG S. R. OF PORTAGE AVE.

**SEWER SERVICE INFORMATION**

ADDRESS	SIZE	R DIST	JUNCTION TIE
378 PORTAGE AVE	-	-	-
382 PORTAGE AVE	-	-	NO INFORMATION AVAILABLE
384 PORTAGE AVE	-	8.23 E MH @ EDMONTON	SERVICED OFF EDMONTON
384 PORTAGE AVE	-	-	NO INFORMATION AVAILABLE
388 PORTAGE AVE	-	-	SERVICED OFF EDMONTON
388 PORTAGE AVE	-	20.11 N CB JCTS S BACK LANE	-
390 PORTAGE AVE	-	-	-
390 PORTAGE AVE	-	73.15 E MH @ KENNEDY	-
392 PORTAGE AVE	-	-	NO INFORMATION AVAILABLE
392 PORTAGE AVE	-	-	NO INFORMATION AVAILABLE
393 PORTAGE AVE	-	-	-
394 PORTAGE AVE	-	-	-
394 PORTAGE AVE	-	57.91 E MH @ KENNEDY ST	-
396 PORTAGE AVE	-	-	-
396 PORTAGE AVE	-	57.91 E MH @ KENNEDY ST	-
398 PORTAGE AVE	-	-	-
398 PORTAGE AVE	-	57.91 E MH @ KENNEDY ST	-
402 PORTAGE AVE	-	-	-
402 PORTAGE AVE	-	34.44 E MH @ KENNEDY	-
404 PORTAGE AVE	-	-	-
410 PORTAGE AVE	-	-	NO INFORMATION AVAILABLE
412 PORTAGE AVE	-	-	NO INFORMATION AVAILABLE
412 PORTAGE AVE	-	-	SERVICED OFF KENNEDY
418 PORTAGE AVE	-	49.07 N MH @ GRAHAM	-
418 PORTAGE AVE	-	-	-
418 PORTAGE AVE	-	61.87 E MH @ VAUGHAN	-

**METRIC**  
WHOLE NUMBERS INDICATE MILLIMETRES  
DECIMALIZED NUMBERS INDICATE METRES

**WARNING**  
IF POWER EQUIPMENT OR EXPLOSIVES ARE TO BE USED FOR EXCAVATION ON THIS PROJECT THE CONTRACTOR MUST:  
1) NOTIFY THE GAS COMPANY OF THE PROPOSED LOCATION OF EXCAVATION.  
2) TAKE PRECAUTION TO AVOID DAMAGE TO GAS COMPANY INSTALLATIONS.  
SEE PROVINCIAL REGULATION 210/72 FOR DETAILS

200 WM	WATERMAIN	200 WM	SL, HYDRO	150 WM	WATERMAIN	150 WM
+	HYDRANT	+	MTS	+	HYDRANT	+
o	VALVE	o	TRAFFIC SIGNALS	+	VALVE	+
525 LDS	LAND DRAINAGE SEWER	525 LDS	GAS	300 LDS	LAND DRAINAGE SEWER	300 LDS
375 WWS	WASTEWATER SEWER	375 WWS	SURVEY BAR	250 WWS	WASTEWATER SEWER	250 WWS
o	MANHOLE	o	FENCE	o	PROFILE	o
o	CATCH BASIN	o	POLE - HYDRO, MTS	o	GROUND ABOVE PIPE	o
o	CURB INLET	o	CURB STOP	o	DITCH (SOUTH & EAST)	o
o	JUNCTIONS	o	GUY ANCHOR	o	GUTTER (NORTH & WEST)	o
o	CULVERT	o	LIGHT STANDARD	o		o
o	ANODE	o	TREE	o		o
o	EXISTING	o	LEGEND-PLAN	o	LEGEND-PROFILE	o
o	PROPOSED	o	EXISTING	o	PROPOSED	o

**LOCATION APPROVED**  
UNDERGROUND STRUCTURES

SUPV. U/G STRUCTURES COMMITTEE DATE

NOTE:  
LOCATION OF UNDERGROUND STRUCTURES AS SHOWN ARE BASED ON THE BEST INFORMATION AVAILABLE BUT NO GUARANTEE IS GIVEN THAT ALL EXISTING UTILITIES ARE SHOWN OR THAT THE GIVEN LOCATIONS ARE EXACT. CONFIRMATION OF ALL SERVICES MUST BE OBTAINED FROM THE INDIVIDUAL UTILITIES BEFORE PROCEEDING WITH CONSTRUCTION.

NO.	REVISIONS	DATE	BY

**CITY OF WINNIPEG**  
WATER AND WASTE  
ENGINEERING DIVISION

DESIGNED BY: TW  
CHECKED BY: KZ  
DRAWN BY: CJH  
APPROVED BY: KZ

HOR. SCALE: 1:250  
VERTICAL: 1:50  
DATE: 2004.05.28

ENGINEER'S SEAL  
ORIGINAL SIGNED BY K.R. ZUREK  
04/05/28

BID OPPORTUNITY: 242-2004  
FILENAME: 05451.dwg  
PLOT DATE: 2004.05.28

**THE CITY OF WINNIPEG**  
WATER AND WASTE DEPARTMENT

2004 COMBINED SEWER RENEWALS  
BY CIPP LINING  
**PORTAGE AVENUE**  
MH AT KENNEDY STREET TO  
MH AT EDMONTON STREET

SHEET 10 OF 13  
CITY DRAWING NUMBER  
05451