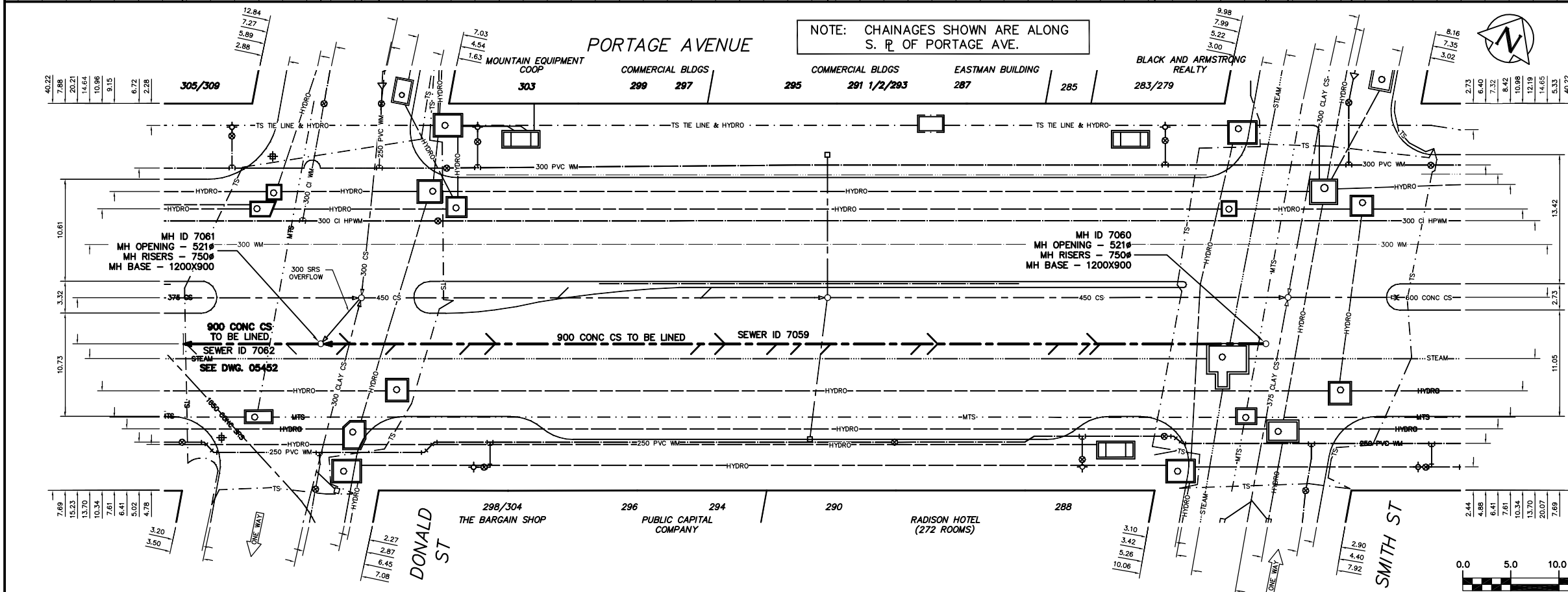


SEWER JUNCTION INFORMATION *
SEWER ID 7059
DISTANCE FROM MH ID 7060

17.20	W	200#	SOUTH	CKI
17.50	W	200#	NORTH	CKI
18.30	W	150#	SOUTH	CKI
21.50	W	150#	SOUTH	CNI
34.10	W	150#	SOUTH	CKI
34.10	W	150#	NORTH	CKI
35.80	W	200#	SOUTH	CKI
45.20	W	150#	SOUTH	CNI
48.30	W	200#	SOUTH	CNI
50.80	W	150#	SOUTH	CNI
56.20	W	150#	NORTH	CNI
56.20	W	150#	SOUTH	CKI
58.70	W	200#	SOUTH	CNI
80.00	W	200#	NORTH	CNI
80.10	W	200#	SOUTH	CNI
82.70	W	150#	SOUTH	CNI
90.40	W	150#	SOUTH	CNI
95.20	W	150#	NORTH	CNI
95.50	W	200#	SOUTH	CNI

* INFORMATION FROM SEWER VIDEO INSPECTION



SEWER SERVICE INFORMATION

ADDRESS	SIZE	R DIST	JUNCTION TIE
279/283 PORTAGE AVE			SERV. OFF SMITH
285 PORTAGE AVE			NO INFORMATION AVAILABLE
287 PORTAGE AVE			20.91 W MH @ SMITH
288 PORTAGE AVE			NO INFORMATION AVAILABLE
290 PORTAGE AVE			NO INFORMATION AVAILABLE
291+293 PORTAGE AVE			NO INFORMATION AVAILABLE
294 PORTAGE AVE			39.93 E MH @ DONALD
295 PORTAGE AVE			NO INFORMATION AVAILABLE
296 PORTAGE AVE			NO INFORMATION AVAILABLE
297 PORTAGE AVE			13.2 W MH W SMITH
298/304 PORTAGE AVE			13.72 E MH @ DONALD
299 PORTAGE AVE			NO INFORMATION AVAILABLE
301 PORTAGE AVE			NO INFORMATION AVAILABLE
303 PORTAGE AVE			28.04 W MH W SMITH
COMMERCIAL			NO INFORMATION AVAILABLE

METRIC
WHOLE NUMBERS INDICATE MILLIMETRES
DECIMALIZED NUMBERS INDICATE METRES

WARNING
IF POWER EQUIPMENT OR EXPLOSIVES ARE TO BE USED FOR EXCAVATION ON THIS PROJECT THE CONTRACTOR MUST:
1) NOTIFY THE GAS COMPANY OF THE PROPOSED LOCATION OF EXCAVATION.
2) TAKE PRECAUTION TO AVOID DAMAGE TO GAS COMPANY INSTALLATIONS.
SEE PROVINCIAL REGULATION 210/72 FOR DETAILS

200 WM	WATERMAIN	200 WM	SL, HYDRO	150 WM	WATERMAIN	150 WM
+	HYDRANT	+	MTS	+	HYDRANT	+
o	VALVE	o	TRAFFIC SIGNALS	o	VALVE	o
525 LDS	LAND DRAINAGE SEWER	525 LDS	GAS	50 GAS	300 LDS	LAND DRAINAGE SEWER
375 WWS	WASTEWATER SEWER	375 WWS	SURVEY BAR	250 WWS	250 WWS	WASTEWATER SEWER
o	MANHOLE	o	FENCE	o	o	PROFILE
o	CATCH BASIN	o	POLE - HYDRO, MTS	o	o	GROUND ABOVE PIPE
o	CURB INLET	o	CURB STOP	o	o	
o	JUNCTIONS	o	GUY ANCHOR	o	o	
o	CULVERT	o	LIGHT STANDARD	o	o	
o	ANODE	o	TREE	o	o	
o	EXISTING	o	LEGEND-PLAN	o	o	LEGEND-PROFILE
o	PROPOSED	o	PROPOSED	o	o	PROPOSED

LOCATION APPROVED
UNDERGROUND STRUCTURES

SUPV. U/G STRUCTURES COMMITTEE	DATE

NOTE:
LOCATION OF UNDERGROUND STRUCTURES AS SHOWN ARE BASED ON THE BEST INFORMATION AVAILABLE BUT NO GUARANTEE IS GIVEN THAT ALL EXISTING UTILITIES ARE SHOWN OR THAT THE GIVEN LOCATIONS ARE EXACT. CONFIRMATION OF EXISTENCE AND EXACT LOCATION OF ALL SERVICES MUST BE OBTAINED FROM THE INDIVIDUAL UTILITIES BEFORE PROCEEDING WITH CONSTRUCTION.

CITY OF WINNIPEG
WATER AND WASTE
ENGINEERING DIVISION

DESIGNED BY: TW
CHECKED BY: KZ
DRAWN BY: CJH
APPROVED BY: KZ

HOR. SCALE: 1:250
VERTICAL: 1:50
DATE: 2004.05.28

ENGINEER'S SEAL
ORIGINAL SIGNED BY K.R. ZUREK
04/05/28

THE CITY OF WINNIPEG
WATER AND WASTE DEPARTMENT

2004 COMBINED SEWER RENEWALS
BY CIPP LINING
PORTAGE AVENUE
MH AT @ SMITH STREET TO
MH AT @ DONALD STREET

SHEET 12 OF 13
CITY DRAWING NUMBER
05453