

**DRAWING INDEX**

**ARCHITECTURAL AND CIVIL**

- A.0 COVER SHEET
- A1.1 INDEX SHEET
- A2.1 DEMOLITION PLAN, KEY PLAN, FLOOR PLAN
- A4.1 ELEVATION
- A5.1 BUILDING & WALL SECTIONS
- A5.2 DETAILS
- A5.3 DETAILS & SCHEDULES

**STRUCTURAL**

- S-1 PLANS
- S-2 PLANS & DETAILS
- S-3 PRECAST WALL ELEVATIONS

**MECHANICAL**

- M-1 VENTILATION LAYOUT

**ELECTRICAL**

- E-1 GENERAL ELECTRIC & DETAILS

**LANDSCAPE**

- L1.1 LANDSCAPE LAYOUT & PLANTING
- L1.2 LANDSCAPE DETAILS

**CONSULTANTS**

**ARCHITECTURAL CONSULTANT** GBR ARCHITECTS  
1150-B WAVERLY STREET  
WINNIPEG, MANITOBA  
R3T 0P4  
TELEPHONE: (204) 452-1150

**STRUCTURAL CONSULTANT** KGS GROUP.  
3RD FLOOR - 865 WAVERLY STREET  
WINNIPEG, MANITOBA  
R3T 5P4  
TELEPHONE: (204) 896-1209

**MECHANICAL CONSULTANT** KGS GROUP.  
3RD FLOOR - 865 WAVERLY STREET  
WINNIPEG, MANITOBA  
R3T 5P4  
TELEPHONE: (204) 896-1209

**ELECTRICAL CONSULTANT** CITY OF WINNIPEG  
WATER AND WASTE DEPARTMENT  
1500 PLESSIS ROAD  
WINNIPEG, MANITOBA  
R2C 5G6  
TELEPHONE: (204) 986-4450

KGS GROUP.  
3RD FLOOR - 865 WAVERLY STREET  
WINNIPEG, MANITOBA  
R3T 5P4  
TELEPHONE: (204) 896-1209

**GENERAL NOTES:**

1. THESE DRAWINGS SHALL NOT BE SCALED.
2. THE CONTRACTOR(S) SHALL SATISFY HIMSELF THAT ALL DIMENSIONS, DATUMS, AND DETAILED INFORMATION SHOWN ARE CORRECT.
3. REPORT DISCREPANCIES TO THE CONTRACT ADMINISTRATOR PRIOR TO COMMENCEMENT OF WORK.
4. ALL PLAN DIMENSIONS ARE TAKEN FROM FINISHED FACE OF PARTITIONS, OR GRIDS, UNLESS NOTED OTHERWISE.



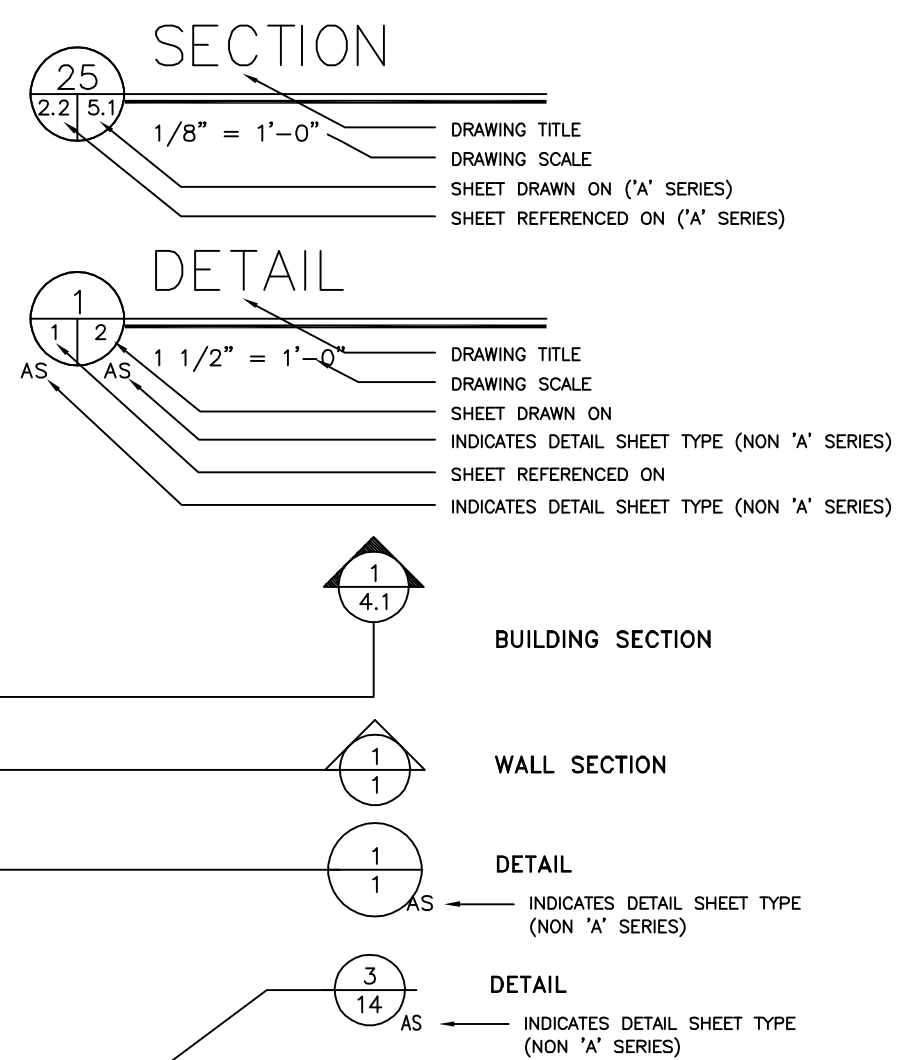
**BUILDING CODE SUMMARY**

NATIONAL BUILDING CODE (NBC) 1995  
**BUILDING AREA:** 500 SQ. FT. (46.45 SQ. M.) - ONE STOREY ABOVE GRADE  
**FACING ONE (1) STREET**  
**BUILDING CLASSIFICATION:** 3.2.2.71 - GROUP F, DIVISION 2, UP TO 2 STOREYS  
**BUILDING CONSTRUCTION:** COMBUSTIBLE AND NON-COMBUSTIBLE CONSTRUCTION, CAN BE USED IN COMBINATION.  
**EGRESS DOORWAYS:** 3.3.1.5.A PERMITS 1 EXIT DOOR  
**FIRE HYDRANT:** 15 METERS FROM BUILDING FACE ON WATERFRONT DRIVE

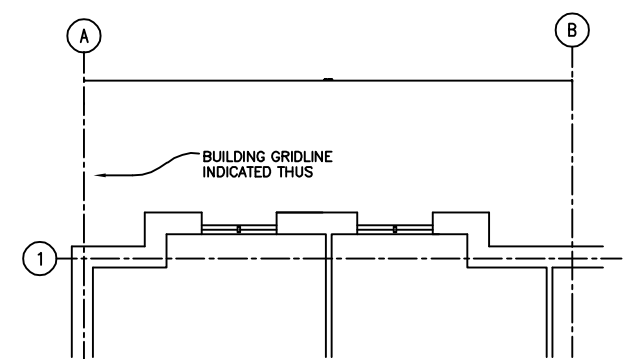
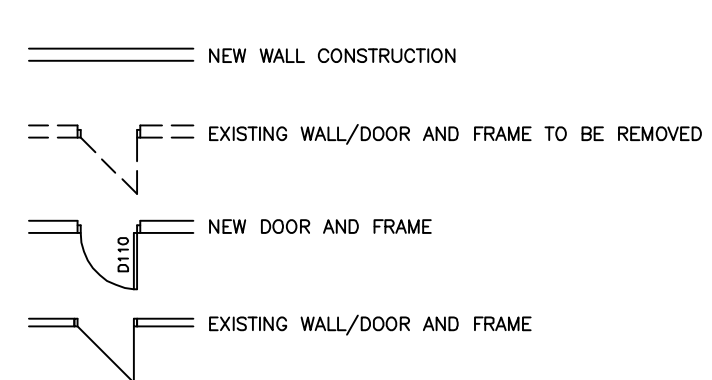
**ABBREVIATIONS**

&	AND
AT	AT
B.S.	BOTH SIDES
C.L.	CENTRE LINE
C/W	COMPLETE WITH
Ø	DIAMETER OR ROUND
E/W	EACH WAY
I.D.	INSIDE DIAMETER
T.D.	TOP OF
#	NUMBER POUND
D.C.	DN CENTRE
O.D.	OUTSIDE DIAMETER
U/S	UNDER SIDE
V/	WITH
CH.	CHANNEL
ARCH.	ARCHITECTURAL
BLDG.	BUILDING
C.B.	CATCH BASIN
C-J	CONTROL JOINT
CLG.	CEILING
CONC.	CONCRETE
CONT.	CONTINUOUS
DF	DRINKING FOUNTAIN
ELEV.	ELEVATION
ELECT.	ELECTRICAL
EQ.	EQUAL
EXIST.	EXISTING
EXT.	EXTERIOR
F.H.C.	FIRE HOSE CABINET
FD	FLOOR DRAIN
GA.	GAUGE
GYP. BD.	GYP. BOARD
HM	HOLLOW METAL
H.S.D.G.	HERMETICALLY SEALED DOUBLE GLAZING
H.S.T.G.	HERMETICALLY SEALED TRIPLE GLAZING
H.V.A.C.	HEATING, VENTILATION, AIR CONDITIONING
INSUL.	INSULATION
INT.	INTERIOR
MAX.	MAXIMUM
MECH.	MECHANICAL
MIN.	MINIMUM
MISC.	MISCELLANEOUS
M.D.	MASONRY OPENING
mm	MILLIMETER
N.I.C.	NOT IN CONTRACT
NO.	NUMBER
N.T.S.	NOT TO SCALE
DH.	OVERHEAD
P.D.	PLANTER DRAIN
PL. LAM.	PLASTIC LAMINATE
PLBG.	PLUMBING
PTD.	PAINTED
R.D.	ROUGH DRAIN
REINF.	REINFORCED
REQ'D	REQUIRED
REV.	REVISION
R.D.	ROUGH OPENING
SQ.	SQUARE
STL.	STEEL
STRUCT.	STRUCTURAL
SUSP.	SUSPENDED
T.D.	TOP OF
TYP.	TYPICAL
U/N	UNLESS OTHERWISE NOTED

**DRAWING SYMBOLS**



**DRAWING LEGEND**

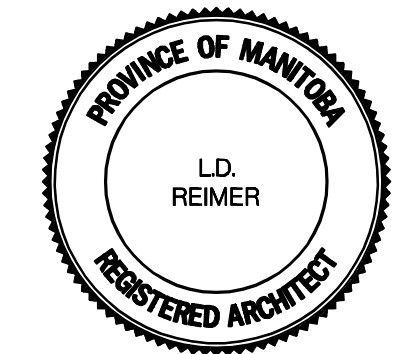


**NOTES:**

1. GRID LINE IS OUTSIDE FACE OF STUDS = OUTSIDE FACE OF CONCRETE FOUNDATION/AND CONCRETE BLOCK.
2. ALL STEEL STUD AND WOOD STUD WALLS ARE DIMENSIONED TO FACE OF GWS UNLESS OTHERWISE NOTED.
3. ALL DIMENSIONS TO FACE OF MASONRY WALLS OR CONCRETE WALLS UNLESS OTHERWISE NOTED.
4. GENERAL CONTRACTOR TO ADJUST ACTUAL STUD PLACEMENT TO ALLOW FOR CONNECTIONS OF DIFFERENT WALL TYPES - EXPOSED FINISHED SURFACES TO BE FLUSH.

**IDENTIFICATION SYMBOLS**

100	ROOM NUMBER
6.2 7	INTERIOR ELEVATION
1	REFERENCE NOTES
W1	WALL CONSTRUCTION TYPE
F1	FLOOR CONSTRUCTION TYPE
R1	ROOF CONSTRUCTION TYPE
A	PARTITION CONSTRUCTION TYPE
A	REVISION NUMBER
A	WINDOW TYPE
A	PROJECT NORTH
A	DATUM MARKER



**METRIC**  
WHOLE NUMBERS INDICATE MILLIMETRES  
DECIMALIZED NUMBERS INDICATE METRES

**WARNING**

IF POWER EQUIPMENT OR EXPLOSIVES ARE TO BE USED FOR EXCAVATION ON THIS PROJECT THE CONTRACTOR MUST:  
 1) NOTIFY THE GAS COMPANY OF THE PROPOSED LOCATION OF EXCAVATION.  
 2) TAKE PRECAUTION TO AVOID DAMAGE TO GAS COMPANY INSTALLATIONS.  
 SEE PROVINCIAL REGULATION 210/72 FOR DETAILS

BM. ELEV.			
POSTED TO LBS			
4	ISSUED FOR TENDER	04.06.28	SHN
3	ISSUED FOR CLIENT REVIEW	04.05.12	SHN
2	PRE TENDER REVIEW	04.03.18	SHN
1	-	-	-
NO.	REVISIONS		

		DESIGNED BY	JP	CHECKED BY	SHN
		DRAWN BY	SHN	APPROVED BY	
		AS NOTED		RELEASED FOR CONSTRUCTION	
		VERTICAL			
		DATE	2003 12 03	DATE	

ENGINEER'S SEAL	
BID OPP.	244-2004
FILENAME	-

**THE CITY OF WINNIPEG**  
WATER AND WASTE DEPARTMENT

**GALT FLOOD PUMPING STATION REDEVELOPMENT**

INDEX SHEET

SHEET 1 OF 6  
CONSULTANT DRAWING NUMBER A1.1  
CITY DRAWING NUMBER LD-3015