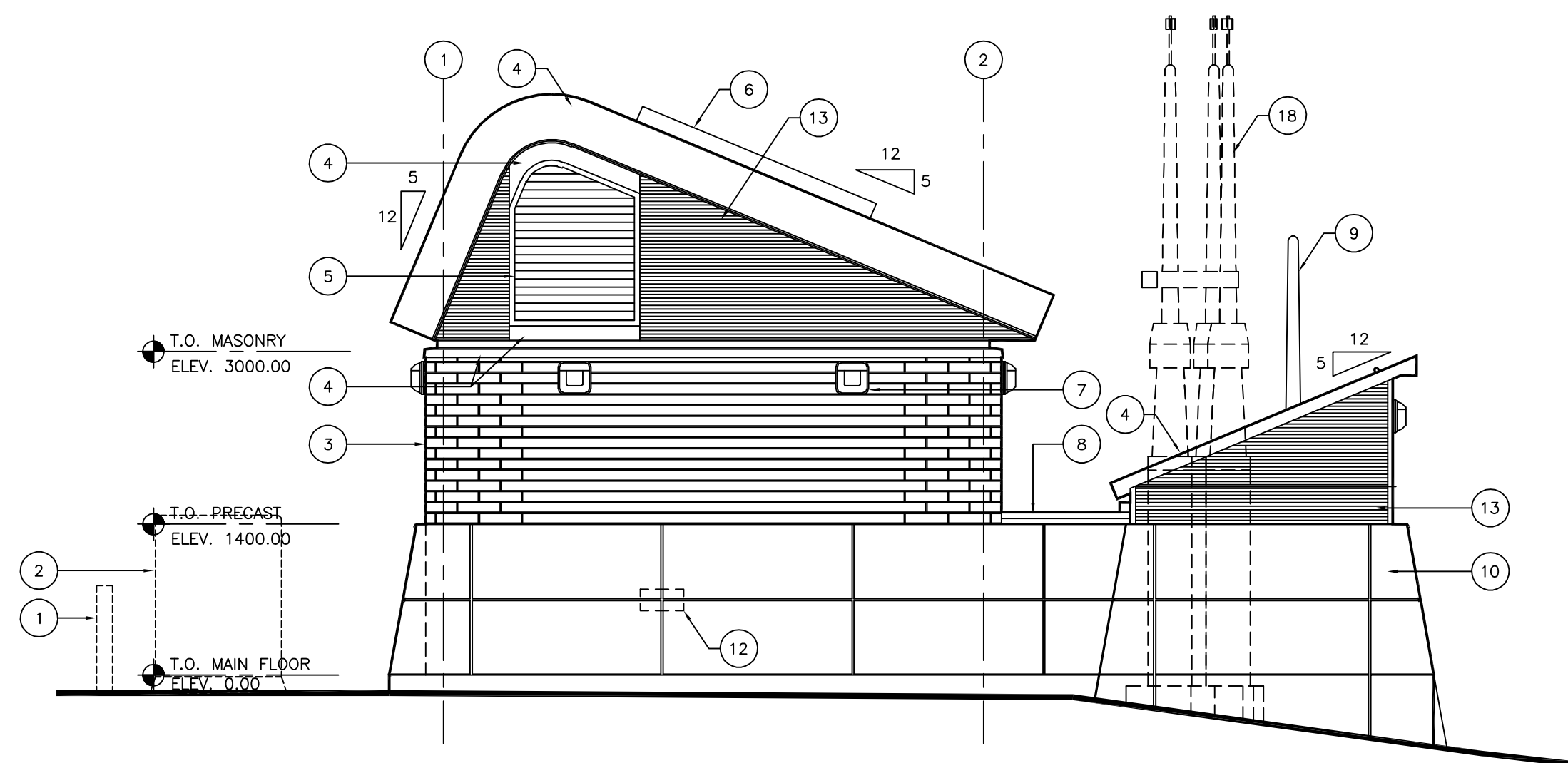
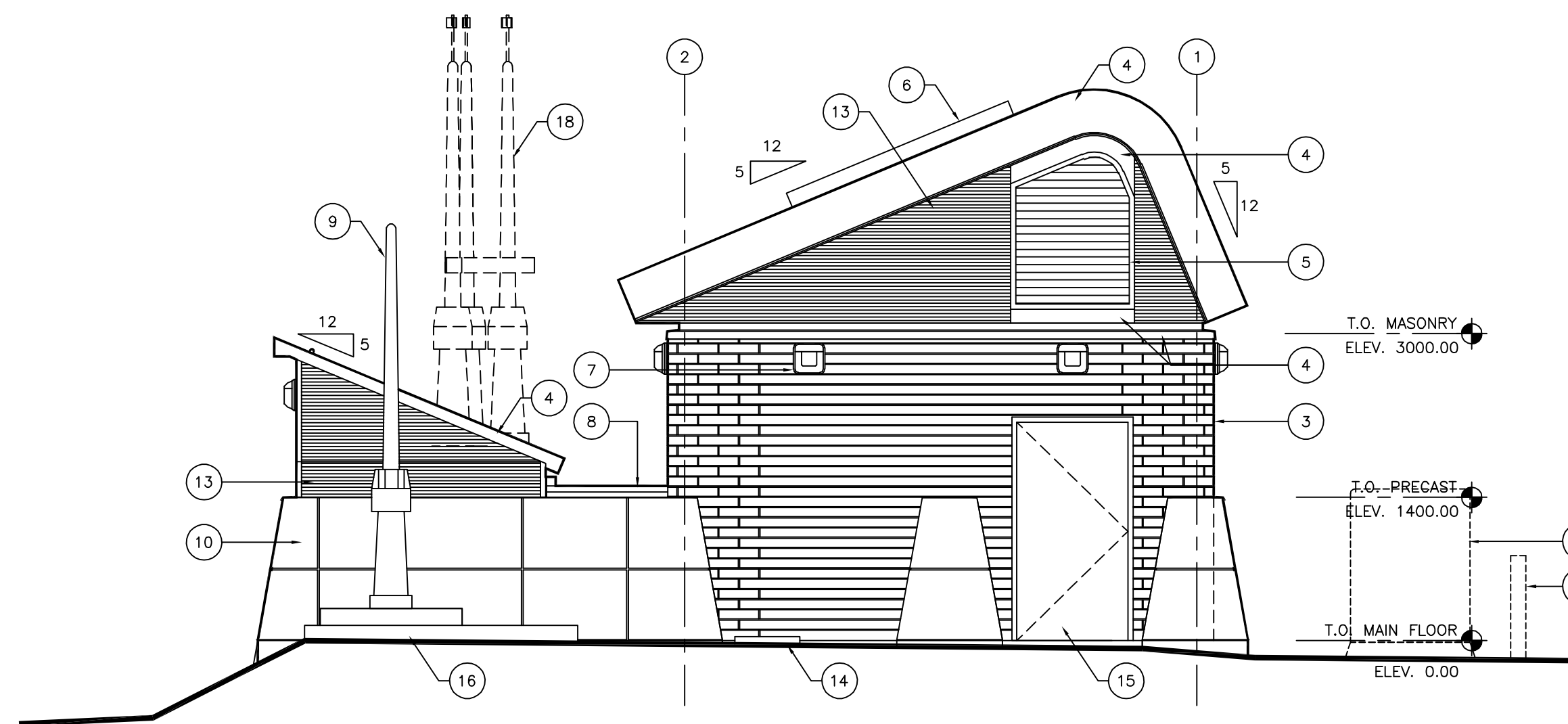


ELEVATION NOTES:

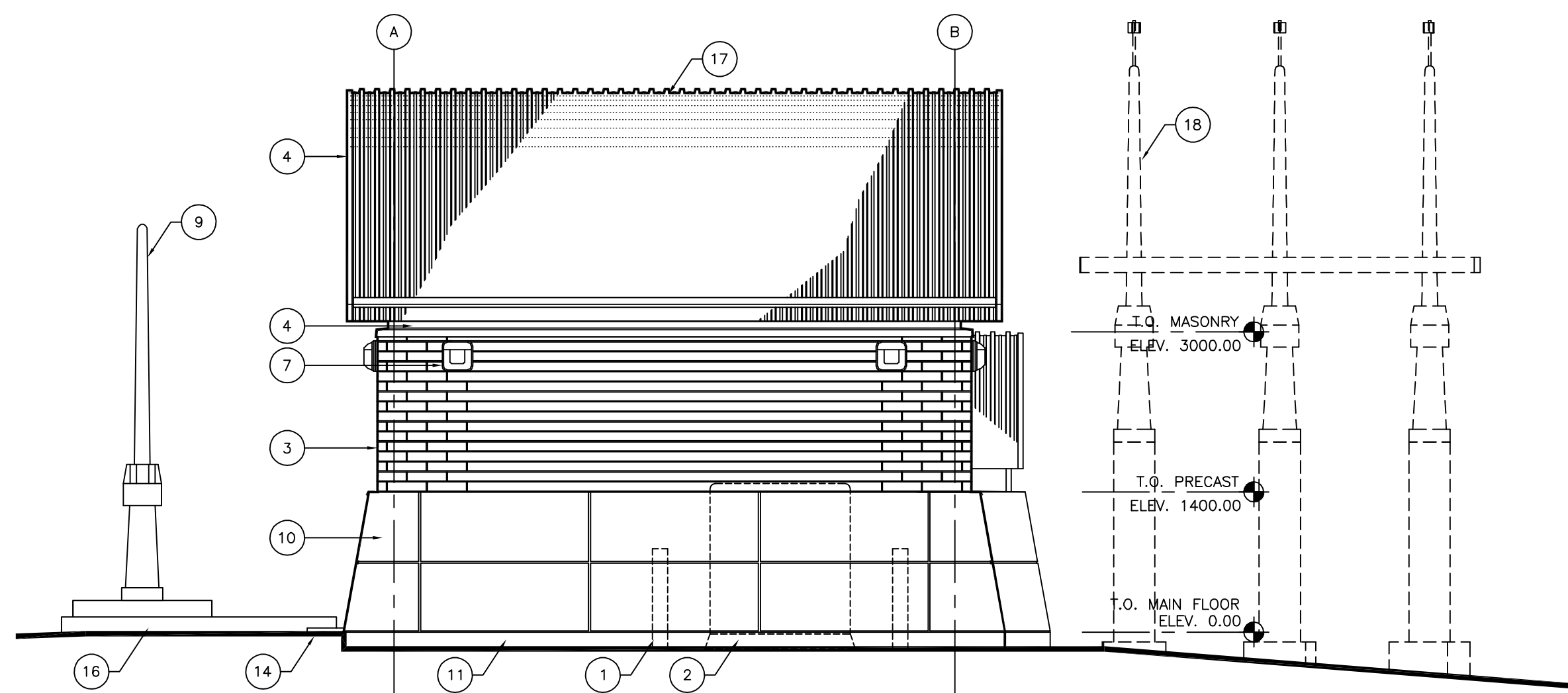
- 1 EXISTING BOLLARD TO BE RELOCATED BY HYDRO
- 2 EXISTING TRANSFORMER TO BE RELOCATED BY HYDRO
- 3 CLAY BRICK
- 4 PREFINISHED METAL FLASHING
- 5 METAL LOUVRE VENT (PREFINISHED)
- 6 METAL ROOF HATCH - PREFINISHED METAL ROOFING
- 7 EXTERIOR LIGHTING
- 8 PRECAST CONCRETE CAP
- 9 EXISTING LIFT GATE (PAINT)
- 10 PRECAST CONCRETE SKIRT - REVEALS AS SHOWN ON ELEVATIONS
- 11 CEMENT PARPING - COLOUR TO MATCH PRECAST CONCRETE PANELS
- 12 INFORMATION PLAQUE (N.I.C.)
- 13 CORRUGATED METAL SIDING
- 14 EXISTING MANHOLE & COVER
- 15 INSULATED HOLLOW METAL DOOR & FRAME (PAINT)
- 16 EXISTING GATE CHAMBER PAD
- 17 METAL ROOF (PREFINISHED)
- 18 FUTURE SCULPTURE (N.I.C.)



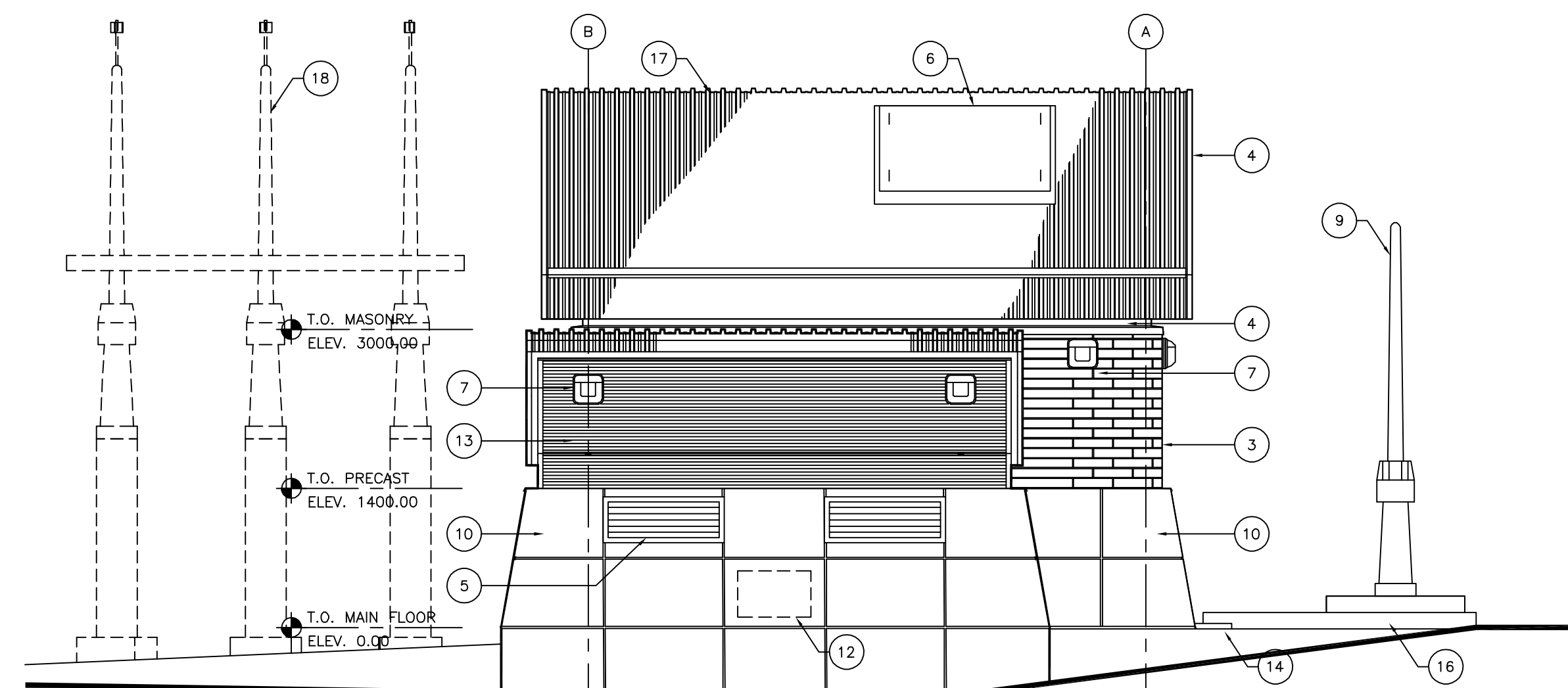
1
SOUTH ELEVATION
SCALE 1:50



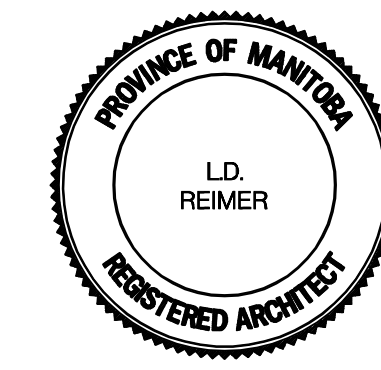
2
NORTH ELEVATION
SCALE 1:50



3
WEST ELEVATION
SCALE 1:50



4
EAST ELEVATION
SCALE 1:50



METRIC
WHOLE NUMBERS INDICATE MILLIMETRES
DECIMALIZED NUMBERS INDICATE METRES

WARNING
IF POWER EQUIPMENT OR EXPLOSIVES ARE TO BE USED FOR EXCAVATION ON THIS PROJECT THE CONTRACTOR MUST:
1) NOTIFY THE GAS COMPANY OF THE PROPOSED LOCATION OF EXCAVATION.
2) TAKE PRECAUTION TO AVOID DAMAGE TO GAS COMPANY INSTALLATIONS.
SEE PROVINCIAL REGULATION 210/72 FOR DETAILS

B.M. ELEV.		
POSTED TO LBIS		
4 ISSUED FOR TENDER	04.06.28	SHN
3 ISSUED FOR CLIENT REVIEW	04.05.12	SHN
2 PRE TENDER REVIEW	04.03.18	SHN
1 -	-	-
NO. REVISIONS		

DESIGNED BY	JP	CHECKED BY	SHN
DRAWN BY	SHN	APPROVED BY	
VERTICAL		RELEASED FOR CONSTRUCTION	
DATE	2003 12 03	DATE	

ENGINEER'S SEAL	
BID OPP.	244-2004
FILENAME	-

Stantec

Winnipeg THE CITY OF WINNIPEG
WATER AND WASTE DEPARTMENT

GALT FLOOD PUMPING STATION REDEVELOPMENT

ELEVATIONS

SHEET 3 OF 6
CONSULTANT DRAWING NUMBER A4.1
CITY DRAWING NUMBER LD-3017