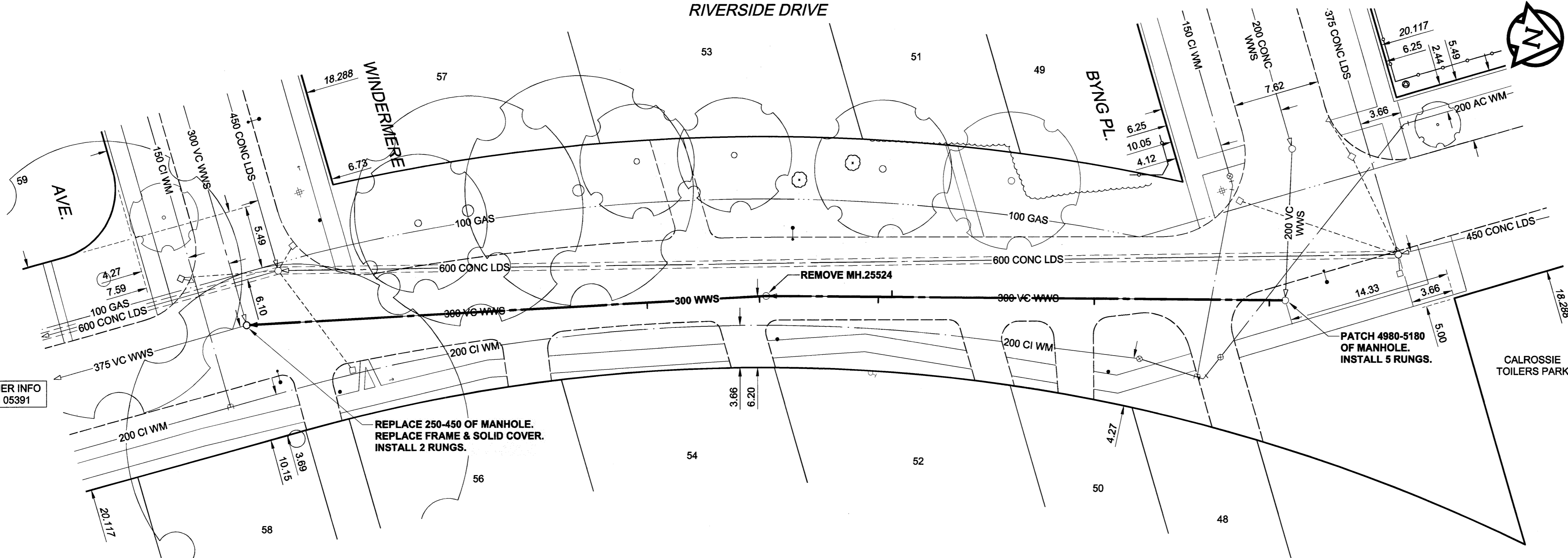
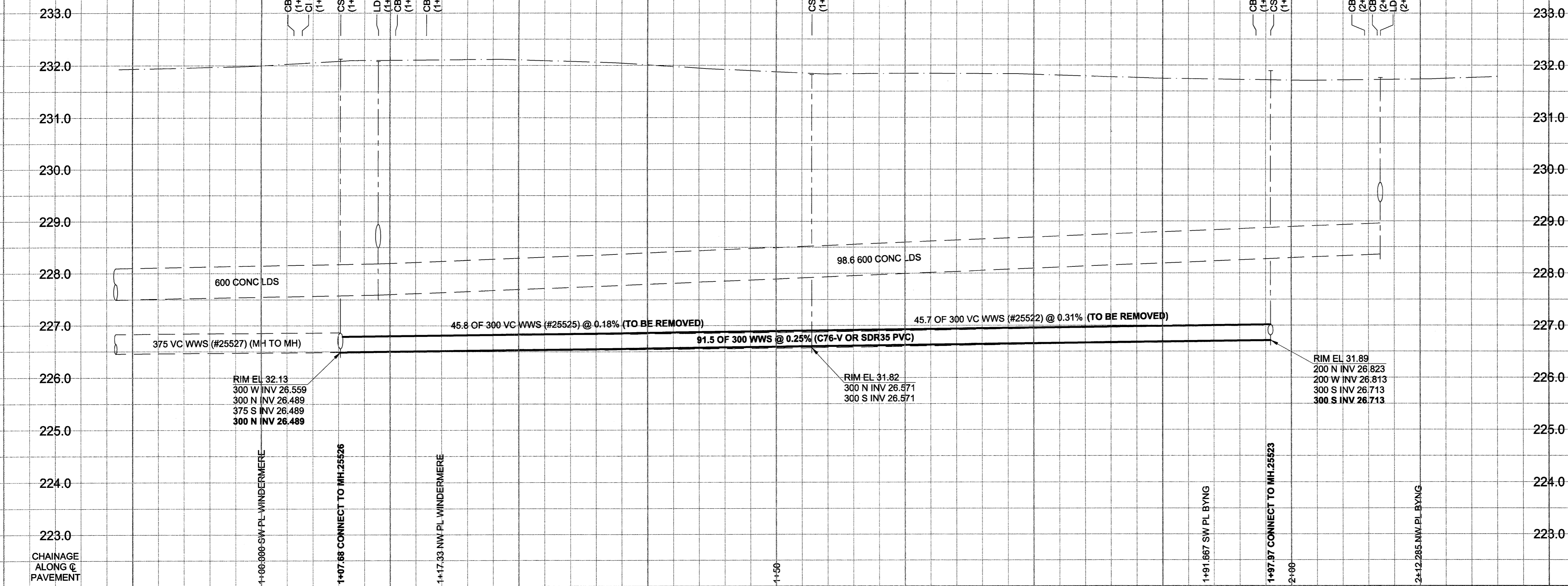


EXISTING FEATURES



**SEWER JUNCTION INFORMATION\***

REF. MH	DIST FROM REF. MH	SIZE	CLOCK AT
25523	1.40	1500	11
25523	16.80	1500	11
25523	34.60	1500	01
25523	38.50	1000	11
25524	0.60	1000	01
25524	10.50	1000	11

\*JUNCTION LOCATION FROM VIDEO INSPECTION

- CONSTRUCTION NOTES:**
1. INSTALL NEW SEWER BY TRENCHLESS METHODS INCLUDING REMOVAL OF EXISTING PIPE.
  2. RENEW SEWER SERVICES A MINIMUM OF 2m OUTSIDE NEW PAVEMENT LIMITS.
  3. ALL SEWER AND WATER SERVICES TO BE LOCATED IN THE FIELD BY THE CONTRACTOR.

**WARNING**  
 IF POWER EQUIPMENT OR EXPLOSIVES ARE TO BE USED FOR EXCAVATION ON THIS PROJECT, THE CONTRACTOR MUST:  
 1) NOTIFY THE GAS COMPANY OF THE PROPOSED LOCATION OF EXCAVATION.  
 2) TAKE PRECAUTION TO AVOID DAMAGE TO GAS COMPANY INSTALLATIONS.  
 SEE PROVINCIAL REGULATION 140/92 FOR DETAILS

150 mm WM	WATERMAIN	150 mm WM	CURB STOP	150 mm WM	WATERMAIN	150 mm WM	LOCATION APPROVED
	HYDRANT		REDUCER		LAND DRAINAGE SEWER		UNDERGROUND STRUCTURES
	VALVE		COUPLING		HYDRO		DATE COMMITTEE
	LAND DRAINAGE SEWER		MTS		GAS		NOTE:
	WASTE WATER SEWER		MANHOLE		ASPHALT		LOCATION OF UNDERGROUND STRUCTURES AS SHOWN ARE BASED ON THE BEST INFORMATION AVAILABLE. BUT NO GUARANTEE IS GIVEN THAT ALL EXISTING UTILITIES ARE SHOWN OR THAT THE GIVEN LOCATIONS ARE EXACT. CONFIRMATION OF EXISTENCE AND EXACT LOCATION OF ALL SERVICES MUST BE OBTAINED FROM THE INDIVIDUAL UTILITIES BEFORE PROCEEDING WITH CONSTRUCTION.
	CATCH BASIN		CONCRETE		MODIFIED BARRIER CURB		
	CURB INLET		LIP CURB		RAMP CURB		
	CULVERT		COMMUNITY MAILBOX				
	SURVEY BAR						
	EXISTING		NEW		EXISTING		NEW

**LOCATION APPROVED**  
 UNDERGROUND STRUCTURES

BM 64-008 N.W. Cor. Riverside Dr. & Byng Pl., 19mm dia. x 6.1m I.B. In Valve Box, 1.0m N. of N.L. Byng Pl. & 1.0m W. of W.L. Riverside Dr.  
 ELEV 231.949m

NO.	REVISIONS	DATE	BY
0	ISSUED FOR CONSTRUCTION	04/05/31	ADL

DESIGNED BY	DPM	CHECKED BY	DATE
DRAWN BY	ADL	APPROVED BY	
HOR. SCALE	1:250	RELEASED FOR CONSTRUCTION	
VERT. SCALE	1:50	DATE	May 20/04

**METRIC**  
 WHOLE NUMBERS INDICATE MILLIMETRES  
 DECIMALIZED NUMBERS INDICATE METRES

**UMA**  
 www.umagroup.com  
 2004 UMA ENGINEERING LTD. ALL RIGHTS RESERVED.

PROFESSIONAL'S SEAL  
 PROVINCE OF MANITOBA  
 28 May 04  
 C. C. MACEY  
 REGISTERED ENGINEER

CONSULTANT DRAWING NO. 17  
 D265-107-02

**THE CITY OF WINNIPEG**  
 WATER AND WASTE DEPARTMENT

**2004 COMBINED SEWER RENEWALS**  
 CONTRACT 13  
 SEWER REPAIRS AND REPLACEMENTS

RIVERSIDE DRIVE  
 WINDERMERE AVENUE  
 TO BYNG PLACE

SHEET 17 OF 17  
 CITY DRAWING NUMBER  
**05479**  
 REV 0

BID OPPORTUNITY NO. 271-2004