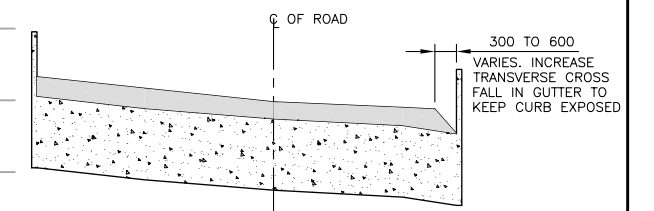


LOCATION PLAN

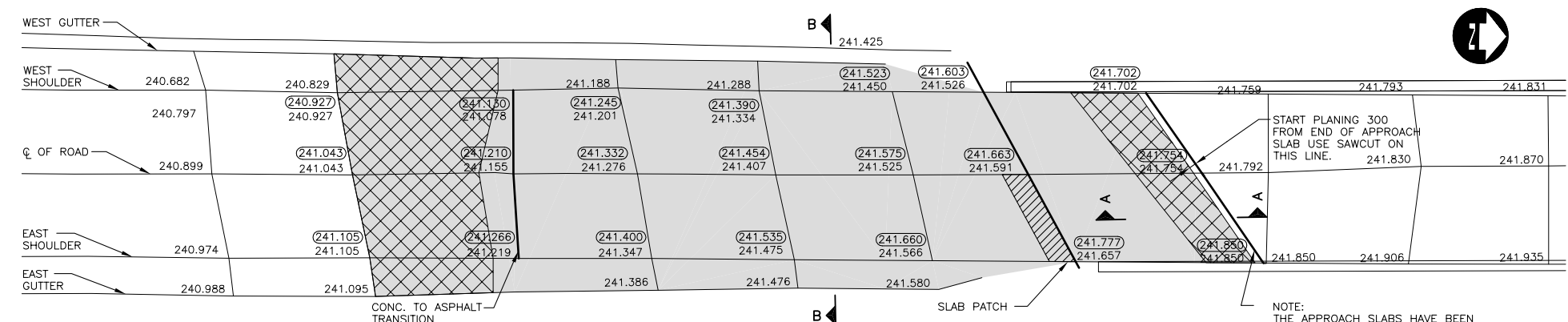
LEGION	
	SLAB PATCHES
	APPROXIMATE PLANING AREA
	PROPOSED ASPHALT SURFACE AREA



CROSS SECTION B-B

HORIZ 1:100  
VERT 1:10

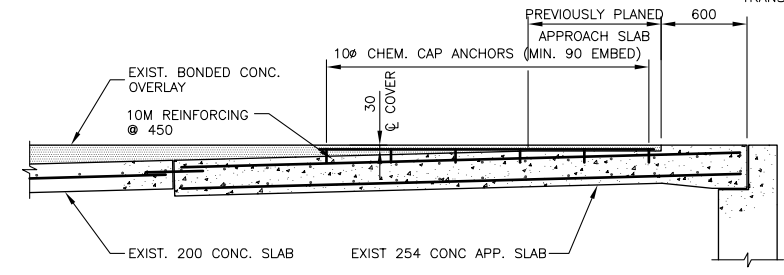
PROFILE  
HORIZ 1:125  
VERT 1:5



PLAN  
1:125

NOTE:  
THE APPROACH SLABS HAVE BEEN PREVIOUSLY OVERLAID WITH REINFORCED BONDED CONCRETE. THE REINFORCING MAY BE ENCOUNTERED WHEN PLANING THE APPROACH SLABS AND NEED NOT BE RESTORED. REFER TO A-A FOR DETAILS

B.M. MONUMENT, BRASS CAP ON THE TOP OF THE SOUTH EAST RETAINING WALL RAMP OF THE NORTH BOUND STRUCTURE.



SECTION A-A

SCALE: 1:25  
EXISTING BONDED OVERLAY ON APPROACH SLAB

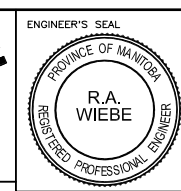
DRAWING REDUCED  
NOT TO SCALE



METRIC  
WHOLE NUMBERS INDICATE MILLIMETRES  
DECIMALIZED NUMBERS INDICATE METRES

B.M. ELEV. 242.614	DESIGNED BY: R.A.W.
	DRAWN BY: K.C.
	CHECKED BY: R.A.W.
	APPROVED BY:
	SCALE: HORIZ. AS SHOWN
	VERT.
	DATE: MAY 10, 2004
2 ISSUED FOR TENDER JUNE 9/04 KC	AUTHORIZED BY:
1 ISSUED FOR CITY REVIEW MAY 28/04 KC	DATE:
NO. REVISIONS	DATE BY CITY BRIDGE ENGINEER

DATE:



CONSULTANT PROJECT NO.  
04-2937-1000

**THE CITY OF WINNIPEG**  
PUBLIC WORKS DEPARTMENT

Winnipeg

**2004 BRIDGE MAINTENANCE**  
ROUTE 20 @ KEEWATIN UNDERPASS  
SOUTH END SOUTH BOUND  
MISCELLANEOUS PAVEMENT REPAIRS  
AND ASPHALT SURFACING

CITY DRAWING NUMBER  
B123-04-01  
SHEET 1 OF 4

PLAN AND PROFILE