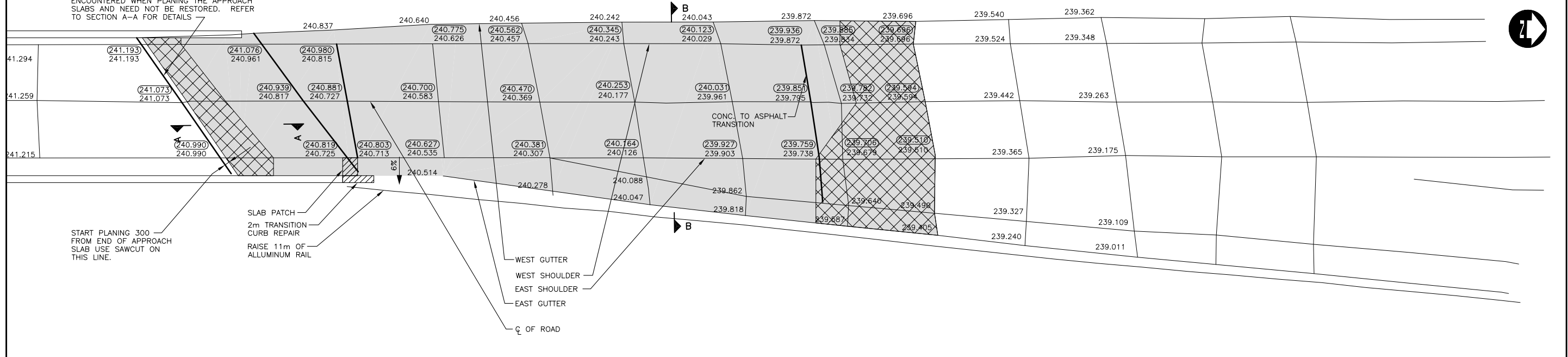


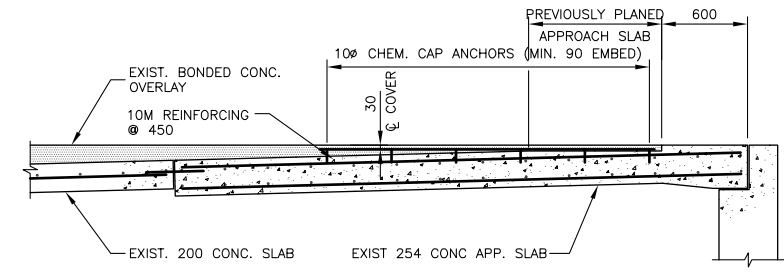
NOTE:
THE APPROACH SLABS HAVE BEEN PREVIOUSLY OVERLAID WITH REINFORCED BONDED CONCRETE. THE REINFORCING MAY BE ENCOUNTERED WHEN PLANING THE APPROACH SLABS AND NEED NOT BE RESTORED. REFER TO SECTION A-A FOR DETAILS



START PLANING 300 FROM END OF APPROACH SLAB USE SAWCUT ON THIS LINE.

SLAB PATCH
2m TRANSITION
CURB REPAIR
RAISE 11m OF
ALLUMINIUM RAIL

WEST GUTTER
WEST SHOULDER
EAST SHOULDER
EAST GUTTER
C OF ROAD



SECTION A-A
SCALE: 1:25
EXISTING BONDED OVERLAY ON APPROACH SLAB

DRAWING REDUCED
NOT TO SCALE



METRIC
WHOLE NUMBERS INDICATE MILLIMETRES
DECIMALIZED NUMBERS INDICATE METRES

PLAN
1:25

B.M. ELEV. 242.614	DESIGNED BY: R.A.W.
	DRAWN BY: K.C.
	CHECKED BY: R.A.W.
	APPROVED BY:
	SCALE: HORZ. AS SHOWN
	DATE: MAY 10, 2004
2 ISSUED FOR TENDER JUNE 9/04 KC	AUTHORIZED BY:
1 ISSUED FOR CITY REVIEW MAY 28/04 KC	DATE:
NO. REVISIONS	DATE BY CITY BRIDGE ENGINEER

ENGINEER'S SEAL
PROVINCE OF MANITOBA
REGISTERED PROFESSIONAL ENGINEER
R.A. WIEBE
CONSULTANT PROJECT NO.
04-2937-1000



THE CITY OF WINNIPEG
PUBLIC WORKS DEPARTMENT

2004 BRIDGE MAINTENANCE
ROUTE 20 @ KEEWATIN OVERPASS
NORTH END NORTH BOUND
MISCELLANEOUS PAVEMENT REPAIRS
AND ASPHALT SURFACING

CITY DRAWING NUMBER
B123-04-04
SHEET **4** OF **4**

PLAN AND PROFILE

B.M. MONUMENT, BRASS CAP ON THE TOP OF THE SOUTH EAST RETAINING WALL RAMP OF THE NORTH BOUND STRUCTURE.