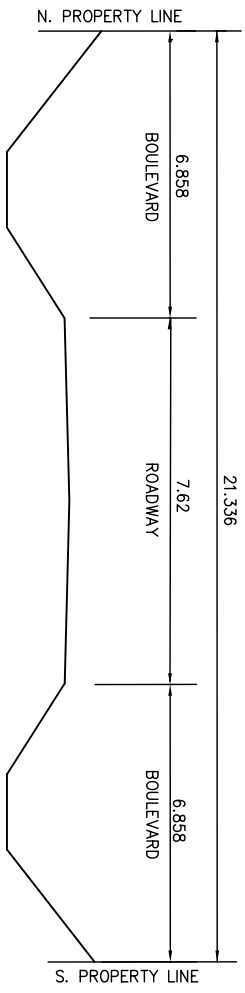


PLAN



TYPICAL CROSS-SECTION

NOTE:
 These design documents are prepared solely for the use by the party with whom the design professional has entered into a contract and there are no representations of any kind made by the design professional to any party with whom the design professional has not entered into a contract.

NSLEA Engineers & Planners Inc.
 Suite 111-93 Lombard Avenue Winnipeg, Manitoba R3B 3B1
 Phone : 204 : 943-3178 Facsimile : 204 : 943-4948

CITY OF WINNIPEG - 2004 RESIDENTIAL STREET RENEWAL PROGRAM
 MAJOR REHABILITATION
 EMO AVENUE FROM
 HARRIS BOULEVARD TO WOODHAVEN BOULEVARD

SCALE: NTS DATE: Mgr4.04 DRAWING #: 41283_SK_05