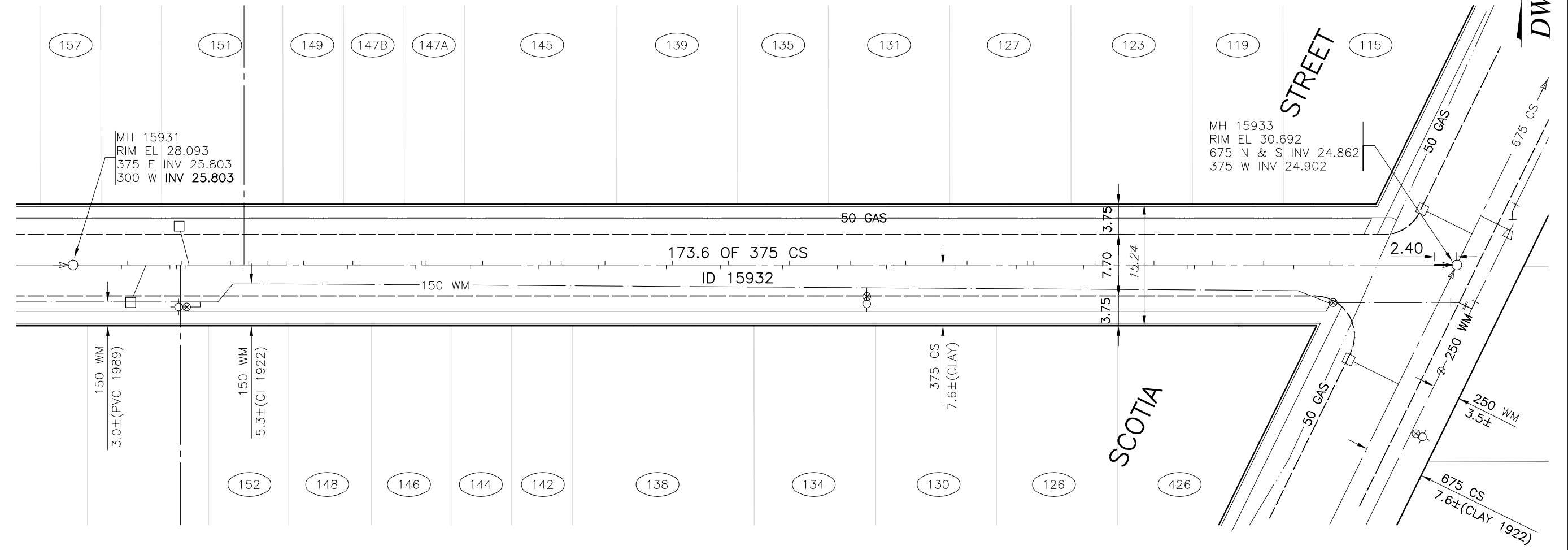


DWG NORTH



B.M. 13-012 EL. 30.654m
WARDROP ENGINEERING INC FB 2031

KINGSBURY AVENUE

NOTE:
LOCATION OF UNDERGROUND STRUCTURES AS SHOWN ARE BASED ON THE BEST INFORMATION AVAILABLE. BUT NO GUARANTEE IS GIVEN THAT ALL EXISTING UTILITIES ARE SHOWN OR THAT THE GIVEN LOCATIONS ARE EXACT. CONFIRMATION OF EXISTENCE AND EXACT LOCATION OF ALL SERVICES MUST BE OBTAINED FROM THE INDIVIDUAL UTILITIES BEFORE PROCEEDING WITH CONSTRUCTION.

MANHOLE INFORMATION		
MANHOLE NUMBER	MANHOLE TYPE	ADDITIONAL INFORMATION
15931	CAST IN PLACE	INSTALL 1 STEP
15933	CAST IN PLACE	REPLACE FRAME & COVER, INSTALL 2 STEPS

ORIGINAL DRAWING
REVISION " - " SEALED BY
HARTLEY KATZ
04.07.19

Certificate of Authorization

Wardrop Engineering Inc.

No. 195 Expiry: April 30, 2005



LEGEND - EXISTING		LEGEND - EXISTING		LEGEND - PROPOSED		REVISIONS/ISSUE	
	SEWER		MANHOLE			NO.	DESCRIPTION
	WATERMAIN		HYDRO POLE			DATE	BY
	GAS		HYDRANT				
	HYDRO		VALVE				
	MTS		CATCHBASIN				
	CONCRETE CURB		CURB INLET				
	SIDEWALK		LIGHT STANDARD				
	PROPERTY LINE		ADDRESS				

THE CITY OF WINNIPEG
WATER AND WASTE DEPARTMENT

2004 COMBINED SEWER RENEWALS
EXTERNAL POINT REPAIRS
KINGSBURY AVENUE
2nd MANHOLE EAST OF MAIN STREET
TO SCOTIA STREET

WARDROP | Engineering Inc.

DESIGNED BY: TY DRAWN BY: GEL CITY DWG NUMBER
CHECKED BY: HAK DATE: 04.03.22 05415