

SEWER SERVICE INFORMATION (ID #19192) \*

DISTANCE FROM 1ST MH S. OF YELLE ST. (MH ID #19193)

8.8 N	SERVICE CONNECTION W
13.7 N	SERVICE CONNECTION W
15.5 N	SERVICE CONNECTION W
16.2 N	SERVICE CONNECTION E
17.2 N	SERVICE CONNECTION E
23.1 N	SERVICE CONNECTION W
23.7 N	SERVICE CONNECTION E
30.6 N	SERVICE CONNECTION W
31.2 N	SERVICE CONNECTION E
32.4 N	SERVICE CONNECTION E
33.5 N	SERVICE CONNECTION W
33.8 N	SERVICE CONNECTION W
38.3 N	SERVICE CONNECTION W
45.5 N	SERVICE CONNECTION W
45.6 N	SERVICE CONNECTION E
46.2 N	SERVICE CONNECTION W
47.7 N	SERVICE CONNECTION E
53.1 N	SERVICE CONNECTION W
53.8 N	SERVICE CONNECTION E
54.2 N	SERVICE CONNECTION W
62.7 N	SERVICE CONNECTION E
68.2 N	SERVICE CONNECTION W
74.4 N	SERVICE CONNECTION W
76.3 N	SERVICE CONNECTION W
76.8 N	SERVICE CONNECTION W
83.2 N	SERVICE CONNECTION E

\* - INFORMATION FROM SEWER VIDEO INSPECTION

DES MEURONS STREET

WARNING

IF POWER EQUIPMENT OR EXPLOSIVES ARE TO BE USED FOR EXCAVATION ON THIS PROJECT THE CONTRACTOR MUST:

1. NOTIFY THE GAS COMPANY OF THE PROPOSED LOCATION OF EXCAVATION.
2. TAKE PRECAUTION TO AVOID DAMAGE TO GAS COMPANY INSTALLATIONS SEE PROVINCIAL REGULATION 210/72 FOR DETAILS

METRIC

WHOLE NUMBERS INDICATE MILLIMETRES  
DECIMALIZED NUMBERS INDICATE METRES

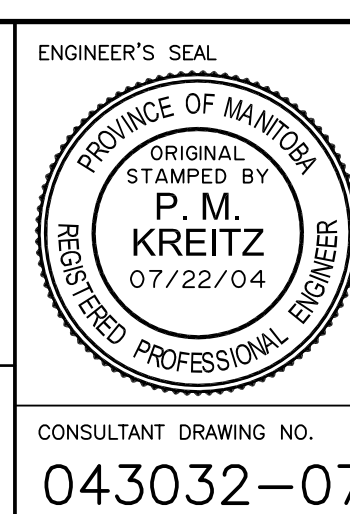
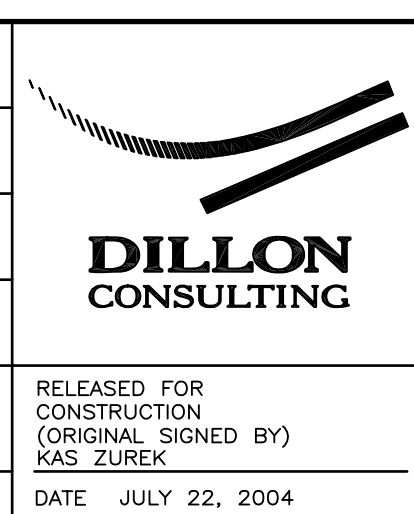
150 mm W.M.	WATERMAIN	150 mm W.M.	HYDRO	150 mm W.M.	WATERMAIN	150 mm W.M.
300 mm L.D.S.	LAND DRAINAGE SEWER	300 mm L.D.S.	ASPHALT	300 mm L.D.S.	LAND DRAINAGE SEWER	300 mm L.D.S.
250 mm W.W.S.	WASTE WATER SEWER	250 mm W.W.S.	PROPERTY LINE	250 mm W.W.S.	WASTE WATER SEWER	250 mm W.W.S.
○	MANHOLE	●	SURVEY BAR	⊕	PROFILE	---
□	CATCH BASIN	■	SERVICE VALVE	⊖	NORTH/WEST GUTTER	---
▽	CURB INLET	▾	I.P.S.	⊖	SOUTH/EAST GUTTER	---
▬	JUNCTIONS	▬	BUILDING	▬		
▬	CULVERT	▬		▬		
▬	GAS	▬		▬		
---	EXISTING	---	LEGEND-PLAN	---	LEGEND-PROFILE	---
---	LEGEND-PLAN	---	PROPOSED	---	PROPOSED	---

UNDERGROUND STRUCTURES

SUPV. U/G STRUCTURES COMMITTEE	DATE
NOTE:	LOCATION OF UNDERGROUND STRUCTURES AS SHOWN ARE BASED ON THE BEST INFORMATION AVAILABLE. BUT NO GUARANTEE IS GIVEN THAT ALL EXISTING UTILITIES ARE SHOWN OR THAT THE GIVEN LOCATIONS ARE EXACT. CONFIRMATION OF EXISTENCE AND EXACT LOCATION OF ALL SERVICES MUST BE OBTAINED FROM THE INDIVIDUAL UTILITIES BEFORE PROCEEDING WITH CONSTRUCTION.

B.M. ELEV.	
DESIGNED BY	A.R.P.
DRAWN BY	S.C.C.
CHECKED BY	P.M.K.
APPROVED BY	
HOR. SCALE	1:500
VERTICAL	
DATE	JUNE 2004
NO.	REVISIONS
DATE	BY
2	ISSUED FOR TENDER 07/23/04 P.M.K.
1	SUBMITTED TO W&W FOR REVIEW 06/30/04 P.M.K.

RELEASED FOR CONSTRUCTION (ORIGINAL SIGNED BY) KAS ZUREK	DATE JULY 22, 2004
--	--------------------



**THE CITY OF WINNIPEG**  
WATER AND WASTE DEPARTMENT

2004 COMBINED SEWER RENEWALS AND REPAIRS - CONTRACT 10  
**DES MEURONS STREET**  
MH AT YELLE ST  
TO 1ST MH SOUTH OF YELLE ST

CITY DRAWING NUMBER  
**05499**  
SHEET 7 OF 17

BID OPPORTUNITY NO. 305-2004

CONSULTANT DRAWING NO.  
**043032-07**