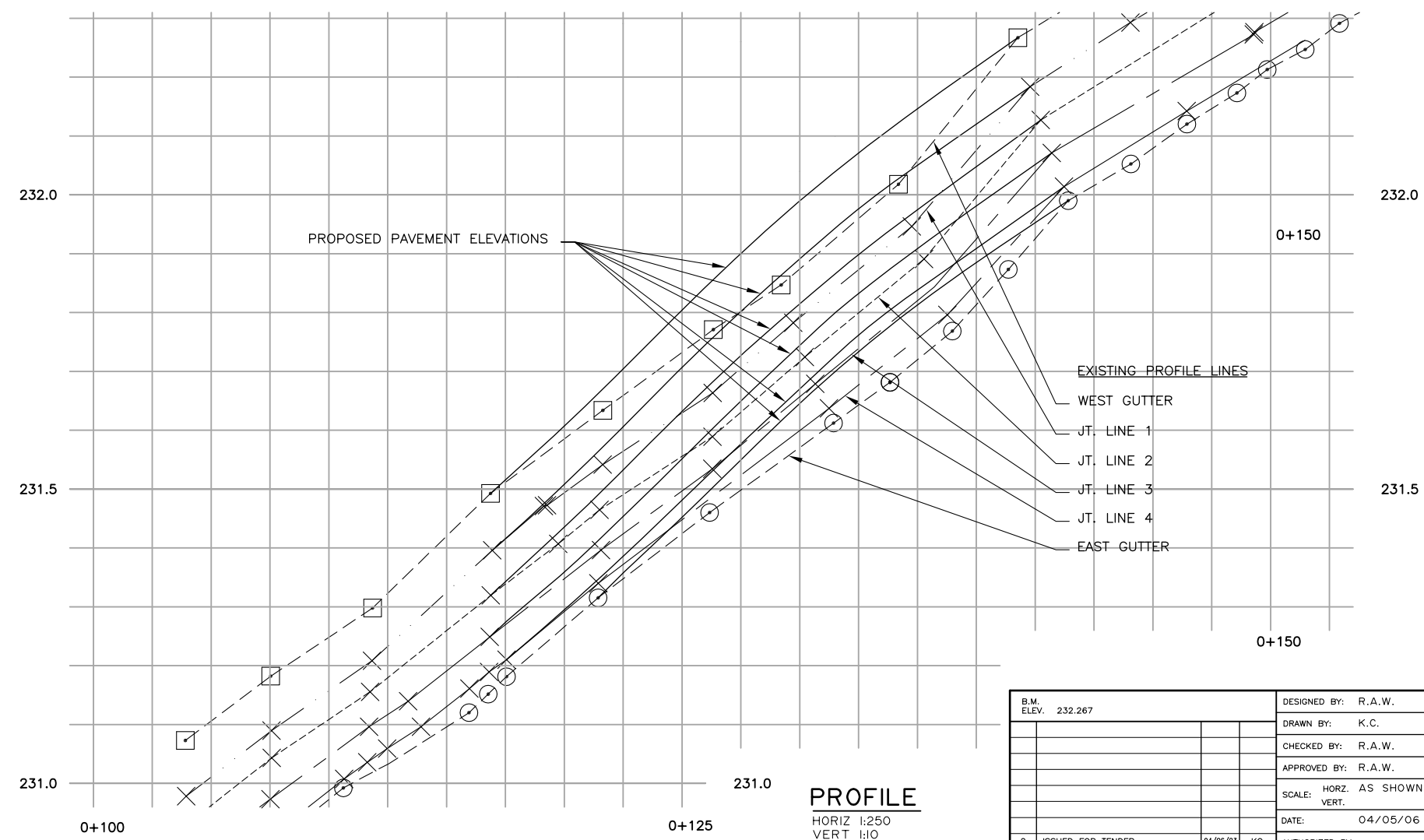


LOCATION PLAN

TEST HOLE (TH)	
NO.	DEPTH (NOTE 2)
1	0
2	0
3	9
4	51
5	100
6	4
7	20
8	25
9	45
10	55
11	15
12	30
13	60
14	60

TEST HOLE (TH)	
NO.	DEPTH (NOTE 2)
15	90
16	125
17	20
18	35
19	54
20	54
21	76
22	109
23	50
24	30
25	55
26	54
27	60
28	90

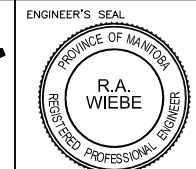


B.M.
SOUTH WEST CORNER OF NORWOOD BRIDGE SOUTH ABUTMENT ROOF.

1. **NOTES:**
THE EXISTING PAVING STONE SIDEWALK IS LOCATED OVER A 100± THICK CONCRETE SLAB. LIFT THE SIDEWALK SLAB AS REQUIRED TO MATCH THE ELEVATION OF THE ADJACENT PAVEMENT SLABS.
2. DEPTH IS THE DEPTH OF THE VOID MEASURED IN APRIL 2004.
3. THE APPROACH SLAB IS 300mm THICK AND IS REINFORCED TOP AND BTM. AT 300 O/C. AVOID CUTTING REINFORCING STEEL WHEN INSTALLING INJECTION HOLES. OTHER PAVEMENT SLABS ARE UNREINFORCED

LEGION	
000.000	PROPOSED PAVEMENT ELEVATIONS
000.000	EXISTING ELEVATION

B.M. ELEV. 232.267	DESIGNED BY: R.A.W.
	DRAWN BY: K.C.
	CHECKED BY: R.A.W.
	APPROVED BY: R.A.W.
	SCALE: HORZ. AS SHOWN VERT. 1:10
	DATE: 04/05/06
2 ISSUED FOR TENDER 04/06/23 KC	AUTHORIZED BY:
1 ISSUED FOR REVIEW 04/06/16 KC	DATE:
NO. REVISIONS DATE BY	CITY BRIDGE ENGINEER



THE CITY OF WINNIPEG
PUBLIC WORKS DEPARTMENT

2004 BRIDGE MAINTENANCE
NORWOOD BRIDGE
APPROACH PAVEMENTS SLAB JACKING

CITY DRAWING NUMBER
B103-04-01
SHEET 1 OF 2

CONSULTANT PROJECT NO.
04-2937-2000

PLAN AND PROFILE