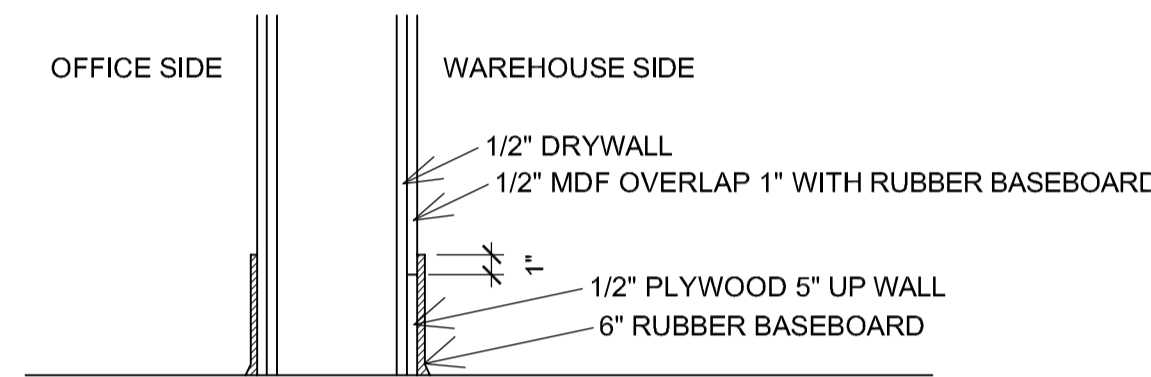
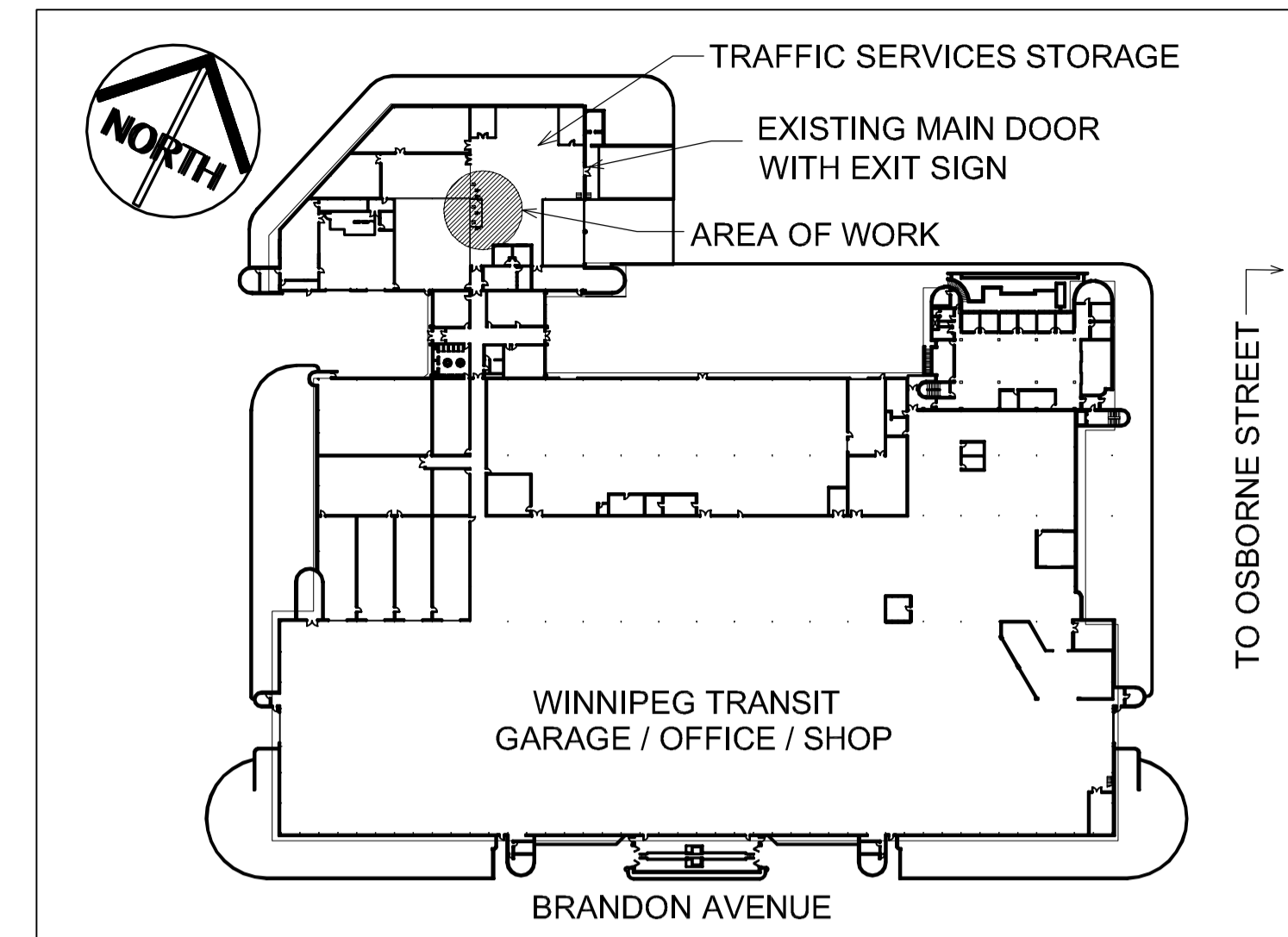


**ELEVATION 'A'**  
 SCALE: 1/4"=1'-0"



**SECTION 'A'**  
 N.T.S.



**KEY PLAN**  
 SCALE: NTS

EXISTING BUILDING HAVE FIRE SPRINKLER SYSTEM AND EXIT SIGNS.

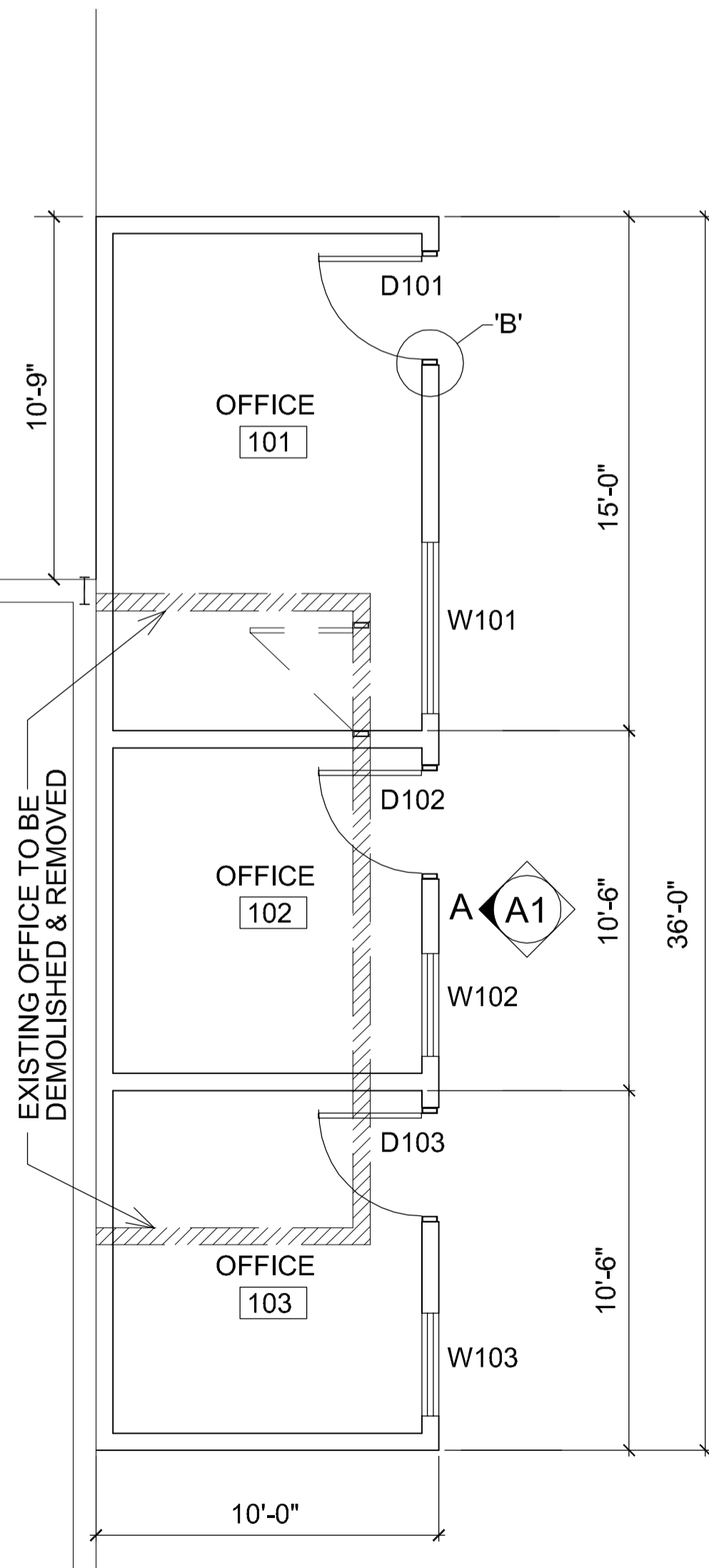
DOOR SCHEDULE											
DOOR NO	DOOR				FRAME			RATING	REMARKS		
	TYPE	WIDTH	HEIGHT	THICK	MAT'L	FINISH	TYPE			MAT'L	FINISH
D101	B	3'-0"	7'-0"	1 3/4"	H.M.	PT.	A	P. ST.	PT.	N/A	2 PR. FBB 168 4 1/2X4 HINGES, SCHLAGE D SERIES RH0028 626 LOCKSET LEVER, FOR KEY ALIKE 10" HIGH SM80A 630 KICKPLATE B/S OF DOOR, DOOR CLOSER LCN 1070 SERIES 3077, FLOOR MOUNTED DOOR STOP, RICHELIEU
D102	B	3'-0"	7'-0"	1 3/4"	H.M.	PT.	A	P. ST.	PT.	N/A	
D103	B	3'-0"	7'-0"	1 3/4"	H.M.	PT.	A	P. ST.	PT.	N/A	

ABBREVIATIONS: H.M. -HOLLOW METAL, PT. -PAINT, P.ST. -PRESSED STEEL

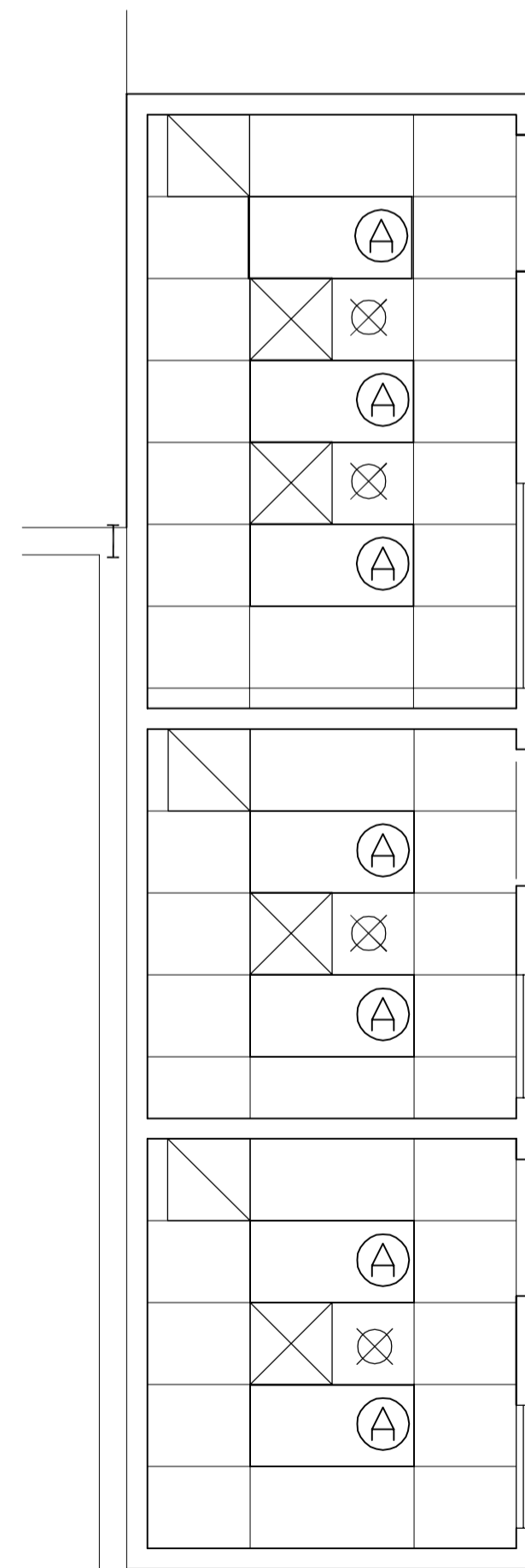
ROOM FINISH SCHEDULE						
ROOM NO.	ROOM NAME	FLOOR	BASEBOARD	WALLS	CEILING	CEILING HT
101	OFFICE	VCT	RUBBER #1	PT-1	AC-T	8'-0"
102	OFFICE	VCT	RUBBER #1	PT-1	AC-T	8'-0"
103	OFFICE	VCT	RUBBER #1	PT-1	AC-T	8'-0"

WINDOW SCHEDULE					
WINDOW NO.	WIDTH OVERALL	HEIGHT OVERALL	MAT'L	FINISH	REMARKS
W101	5'-0" x 3'-0"		P.ST	PT.	1/4" GLASS
W102	4'-0" x 3'-0"		P.ST	PT.	1/4" GLASS
W103	4'-0" x 3'-0"		P.ST	PT.	1/4" GLASS

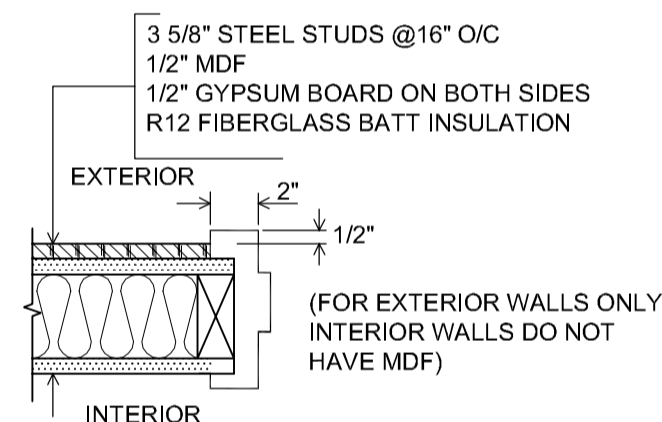
LEGEND		
NAME	MANUFACTURER DISCRPTION	COLOUR
VCT	AMTICO COLOUR PLUS	FORTRESS FE-2090
RUBBER #1	6" JOHNSONITE RUBBER WALL BASE	BLACK
PT	PRATT & LAMBERT SEMI-GLOSS	SYMPHONY BLUE 2325
PT-1	PRATT & LAMBERT SATIN FINISH	WHITE CAP GREY 2321
AC-T	CORTEGA 769 15/16" EXPOSED TEE GRID	WHITE
MDF PANELS	PRATT & LAMBERT SEMI-GLOSS	SYMPHONY BLUE 2325
⊠	SUPPLY AIR GRILLE	SEE SHEET M-1
⊡	RETURN AIR GRILLE	SEE SHEET M-1
⊗	SPRINKLER HEAD	SEE SHEET M-1
⊕	FLUORESCENT FIXTURE	SEE SHEET E-1



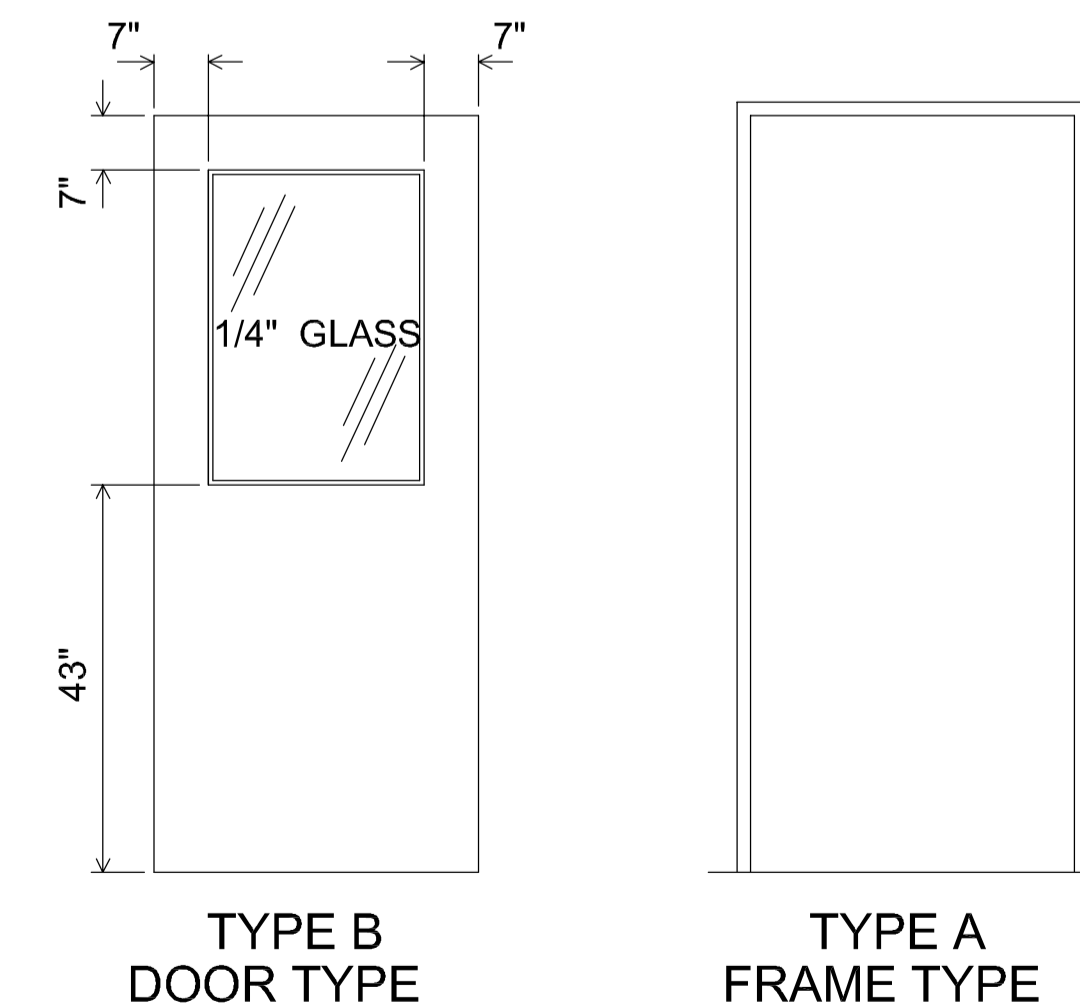
**NEW OFFICE LAYOUT**  
 SCALE: 1/4"=1'-0"



**REFLECTIVE CEILING PLAN**  
 SCALE: 1/4"=1'-0"



**VIEW 'B'**  
 SCALE: 1-1/2"=1'-0"



**TYPE B DOOR TYPE**

**TYPE A FRAME TYPE**

**NOTES :**

1. THESE DRAWINGS SHALL NOT BE SCALED.
2. THE CONTRACTOR SHALL VISIT THE SITE AND SATISFY ONESELF ALL DIMENSIONS, DATUM, AND DETAILED INFORMATION SHOWN ARE CORRECT.
3. THE CONTRACTOR IS TO REPORT ANY DISCREPANCIES PRIOR TO COMMENCEMENT OF WORK.
4. THE CONTRACTOR IS TO REVIEW AND COORDINATE ALL ARCHITECTURAL, MECHANICAL, ELECTRICAL AND STRUCTURAL DRAWINGS FOR ADDITIONAL OPENINGS THROUGH FLOORS, WALLS, AND CEILINGS FOR DUCT, PIPE AND ELECTRICAL RISERS AND ALL OPENINGS NOT SHOWN ON DRAWINGS.
5. ALL OPENINGS THROUGH FIRE ASSEMBLIES ARE TO BE FIRE STOPPED AND SEALED WITH ULC APPROVED FIRE STOPPING TO MAINTAIN THE INTEGRITY OF THE FIRE SEPARATION, AND PROVIDE A SMOKE-TIGHT BARRIER.
6. ALL PRODUCTS AND MATERIALS TO BE USED & INSTALLED SHALL CONFORM WITH MANUFACTURER'S SPECIFICATIONS & APPLICABLE CODES.
7. THE CONTRACTOR SHALL BE RESPONSIBLE TO PATCH & MAKE GOOD ALL EXISTING CONSTRUCTION AFFECTED BY THE REMOVAL OF ALL ITEMS FORMING THE PART OF THE RENOVATION WORK.
8. WHERE NEW FLOORING AND BASE IS TO BE INSTALLED IN EXISTING AREAS (REFER TO FLOOR PLAN AND ROOM SCHEDULE) THE EXISTING FLOORING SURFACE AND BASE MUST BE REMOVED, UNLESS OTHERWISE NOTED. ALL FLOOR SURFACES SHALL BE PREPARED IN ACCORDANCE TO MANUFACTURER'S RECOMMENDATIONS FOR INSTALLATION OF NEW FLOOR.
9. WHERE PAINTING OF EXISTING WALLS IS INDICATED, THESE WALLS MUST BE CLEANED OF ANY EXISTING WALL COVERING, PATCHED & PREPARED TO ACCEPT NEW MATERIAL, UNLESS OTHERWISE NOTED.

ORIGINAL STAMPED BY: R.K. FOK I, MAA  
 DATE: JULY 6, 2004

NO.	REVISION/DESCRIPTION	BY	DATE

DRAWN BY: mbo  
 CHECKED BY: USER APPROVAL  
 DATE: 2004-05-27

**CITY OF WINNIPEG**  
 PLANNING, PROPERTY & DEVELOPMENT DEPARTMENT  
 CIVIC ACCOMMODATIONS DIVISION  
 300 - 65 GARRY ST. R3C 4K4

**PROJECT**  
 TRAFFIC SERVICES SHOP  
 NEW OFFICES FOR FOREMAN

421 OSBORNE STREET

**SHEET TITLE**  
 PLAN VIEW, ELEVATION & SCHEDULES

SCALE: AS NOTED  
 PROJECT NO.: 2004-035  
 SHEET NO.: A-1