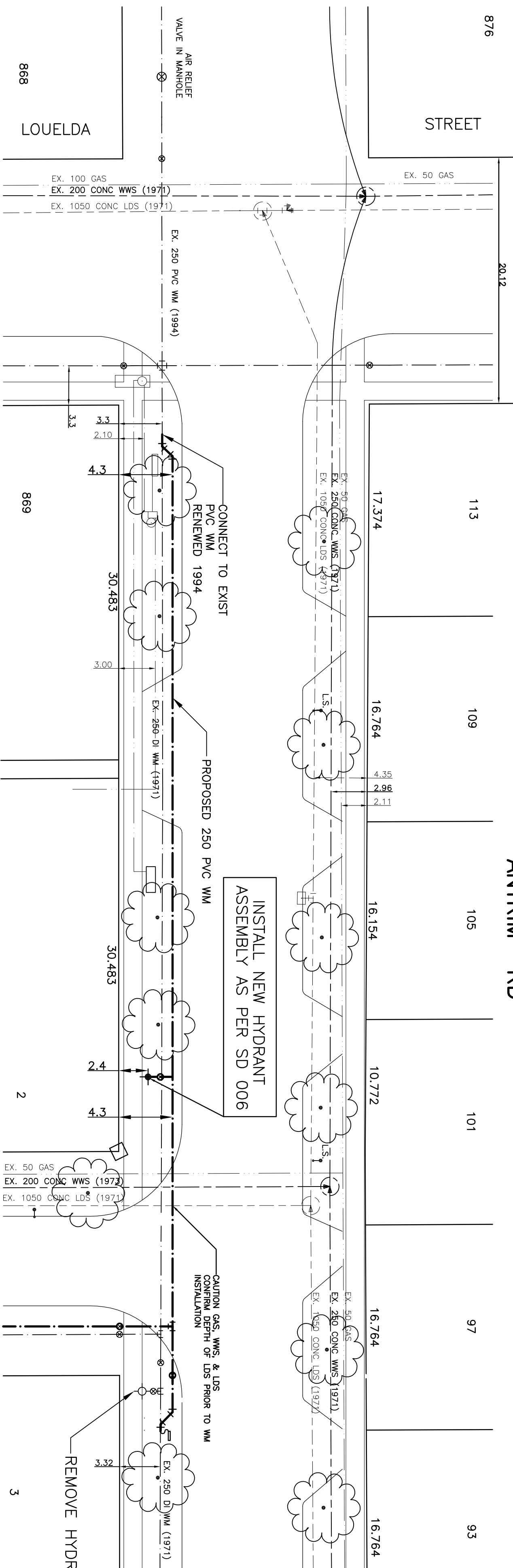
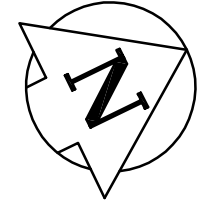


CHAINAGE ALONG SOUTH PROPERTY LINE OF ANTRIM RD

ANTRIM RD



ADDRESS	SIZE (mm) & TYPE	SIZE (mm) & TYPE	SHORT & LONG MEASUREMENT	COOR LOCATION	REMARKS
93 ANTRIM RD RESIDENTIAL	19 COPPER	19 COPPER	6.2 WEHL		
RESIDENTIAL	19 COPPER	19 COPPER	4.9 EWHL		
TOT ANTRIM RD	19 COPPER	19 COPPER	5.6 EWHL		
109 ANTRIM RD	19 COPPER	19 COPPER	5.4 EWHL		
RESIDENTIAL	19 COPPER	19 COPPER	7 WEHL		
RESIDENTIAL	19 COPPER	19 COPPER	4.3 EWHL		

WHOLE NUMBERS INDICATE MILLIMETRES  
DECIMALIZED NUMBERS INDICATE METRES

BENCHMARK  
S.W. CORNER LOUELDA ST. & ANTRIM RD.  
2.7M E. OF W.L. LOUELDA ST. & ON E.L. ANTRIM RD.

- NOTES:
1. ALL GATE VALVES ARE TO BE COUNTER-CLOCKWISE TO OPEN WITH A BLACK OPERATING HANDLE.
  2. WATERMAIN TO BE INSTALLED BY TRENCHLESS METHODS.
  3. BACKFILL IS CLASS 3 WITH BOUTELIARD AND CLASS 3 OF TRENCH OR SIDEWALK OR WHEN WITHIN 1.0m OF TRENCH OR SIDEWALK.
  4. WATER SERVICES ARE 19mm UNLESS OTHERWISE NOTED.
  5. MINIMUM COVER TO TOP OF WATERMAIN SHALL BE 2.4m.
  6. LOCATION OF ALL SERVICES TO BE CONFIRMED IN FIELD.
  7. DEPTH PRIOR TO CONSTRUCTION.
  8. ALL LEAD SERVICES TO BE RENEWED.
  9. SERVICES TO BE RENEWED SHALL BE REPLACED FROM WATERMAIN TO PROPERTY LINE. ALL OTHERS TO BE RECONNECTED.

LOCATION APPROVED UNDERGROUND STRUCTURES

DATE

DESIGNED BY: DPCJ  
DRAWN BY: DPCJ  
HOR. SCALE: 1:250  
VERT. SCALE: 1:50  
DATE: MAY 2004

CHECKED BY: SM  
APPROVED BY: IMCK  
RELEASED FOR ORIGINALITY BY: K. ZUREK  
DATE: JULY 21 2004

ENGINEER: I. G. MCKINNON  
REGISTERED PROFESSIONAL ENGINEER  
089-018-01

THE CITY OF WINNIPEG  
WATER AND WASTE DEPARTMENT  
2004 CAPITAL WORKS  
WATERMAIN RENEWALS  
ANTRIM ROAD  
LOUELDA STREET  
TO AVACO DR.

CITY DRAWING NO.  
SHEET 1 OF 1

D-85667