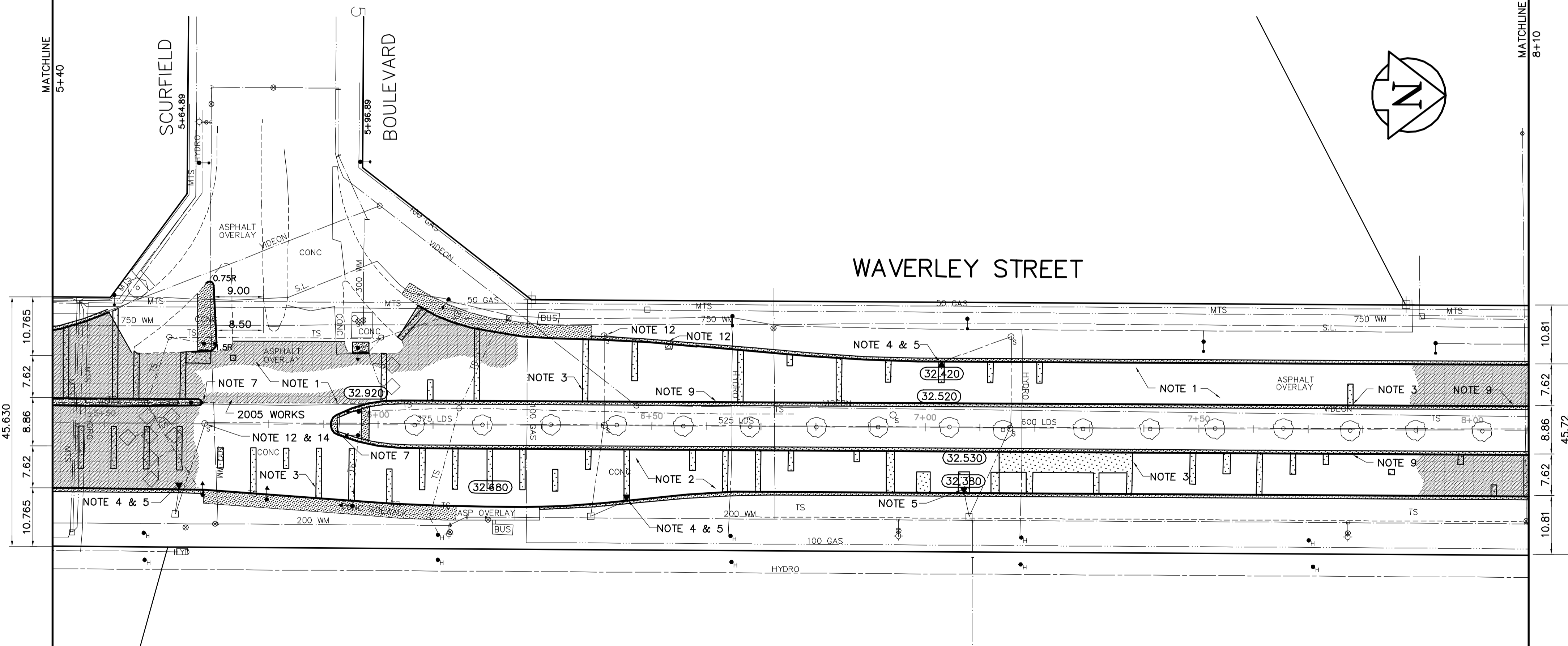


KEY PLAN

WAVERLEY STREET



- REFERENCE NOTES**
- A. BASELINE IS CENTRED BETWEEN NORTHBOUND AND SOUTHBOUND GUTTER BACK OF CURB LINE.
 - B. LEGAL PLAN - L.B.I.S.
 - C. ADD 200.000 TO OBTAIN GEODETIC DATUM.
 - D. PAVEMENT DIMENSIONS ARE TO BACK OF CURB.
 - E. EARTH TECH FIELD BOOK NO. 4380.
- CONSTRUCTION NOTES**
1. PLANE AND CONSTRUCT NEW ASPHALTIC CONCRETE OVERLAY.
 2. CONSTRUCT NEW ASPHALTIC CONCRETE OVERLAY.
 3. CONSTRUCT NEW 200mm PLAIN DOWELLED CONCRETE PAVEMENT c/w ASPHALTIC CONCRETE OVERLAY.
 4. ABANDON EXISTING DRAINAGE INLET.
 5. INSTALL NEW CURB & GUTTER INLET c/w CATCHPIT (SD223) AND CONNECT NEW 250 LEAD TO EXIST. CATCHBASIN.
 6. ADJUST EXISTING CURB & GUTTER INLET FRAME AND COVER.
 7. CONSTRUCT NEW MONOLITHIC CONCRETE BULLNOSE.
 8. CONSTRUCT NEW MONOLITHIC CONCRETE MEDIAN SLAB.
 9. CONSTRUCT NEW MONOLITHIC CONCRETE SPLASH STRIP.
 10. CONSTRUCT NEW CONCRETE MEDIAN SLAB.
 11. ADJUST EXISTING WATERMAIN VALVE BOX TO GRADE.
 12. ADJUST EXISTING CATCHBASIN/MANHOLE FRAME AND COVER.
 13. INSTALL NEW WATERMAIN VALVE BOX EXTENDABLE SECTION INSERT.
 14. INSTALL NEW CAST IRON RISER RING.

APEGM
 Certificate of Authorization
 Earth Tech Canada Inc.
 No. 730 Expiry: April 30, 2005

METRIC
 WHOLE NUMBERS INDICATE MILLIMETRES
 DECIMALIZED NUMBERS INDICATE METRES

EXISTING	LEGEND - PLAN	PROPOSED	EXISTING	LEGEND - PLAN	PROPOSED	EXISTING	LEGEND - PROFILE	PROPOSED
150 mm W.M.	WATERMAIN	150 mm W.M.	Hydro	Hydro	Hydro	Profile	Profile	Profile
Hydrant	Hydrant	Hydrant	Concrete	Concrete	Concrete	West Median Gutter	West Median Gutter	West Median Gutter
Valve	Valve	Valve	Asphalt	Asphalt	Asphalt	East Median Gutter	East Median Gutter	East Median Gutter
300mm L.D.S.	LAND DRAINAGE SEWER	300mm L.D.S.	Property Line	Property Line	Property Line	West Gutter	West Gutter	West Gutter
250mm W.W.S.	WASTEWATER SEWER	250mm W.W.S.	Survey Bar	Survey Bar	Survey Bar	East Gutter	East Gutter	East Gutter
Manhole	Manhole	Manhole	Elevation	Elevation	Elevation			
Catch Basin	Catch Basin	Catch Basin	Tree	Tree	Tree			
Curb Inlet	Curb Inlet	Curb Inlet	Sidewalk Ramp	Sidewalk Ramp	Sidewalk Ramp			
Junctions	Junctions	Junctions	Concrete Sidewalk	Concrete Sidewalk	Concrete Sidewalk			
Culvert	Culvert	Culvert	Fence	Fence	Fence			
Gas	Gas	Gas						

LOCATION APPROVED UNDERGROUND STRUCTURES

SUPV. U/G STRUCTURES DATE COMMITTEE

NOTE:
 LOCATION OF UNDERGROUND STRUCTURES AS SHOWN ARE BASED ON THE BEST INFORMATION AVAILABLE, BUT NO GUARANTEE IS GIVEN THAT ALL EXISTING UTILITIES ARE SHOWN OR THAT THE GIVEN LOCATIONS ARE EXACT. CONFIRMATION OF EXISTENCE AND EXACT LOCATION OF ALL SERVICES MUST BE OBTAINED FROM THE INDIVIDUAL UTILITIES BEFORE PROCEEDING WITH CONSTRUCTION.

B.M. 65-022
 ELEV. 232.751

N.E. Cor. Waverley St. & Clarence Ave.
 10m. in W. corner of No. 1380
 Waverley St., 0.5m S. & 0.07m below
 Tyndal stone of N.W. Cor. of Bldg.

EARTH TECH
 Earth Tech (Canada) Inc. Winnipeg, Manitoba 204.477.5381

DESIGNED BY BK CHECKED BY KWR
 DRAWN BY PAAP,RT,BC APPROVED BY ORIGINAL SIGNED

HOR. SCALE: 1:500
 VERTICAL: 1:20

RELEASED FOR CONSTRUCTION BY: ORIGINAL SIGNED AND DATED 29/07/04

ENGINEER'S SEAL
 PROVINCE OF MANITOBA
 ORIGINAL SIGNED BY
K.W. RAE
 30/07/04
 REGISTERED PROFESSIONAL ENGINEER

THE CITY OF WINNIPEG
 PUBLIC WORKS DEPARTMENT
 ENGINEERING DIVISION

WAVERLEY STREET
 BISHOP GRANDIN BLVD TO CLARENCE AVENUE
 CONCRETE REPAIRS AND ASPHALT RESURFACING

CITY DRAWING NUMBER PD-3252-03
 SHEET 4 OF 7

PLAN-PROFILE
 STA. 5+40 TO STA. 8+10