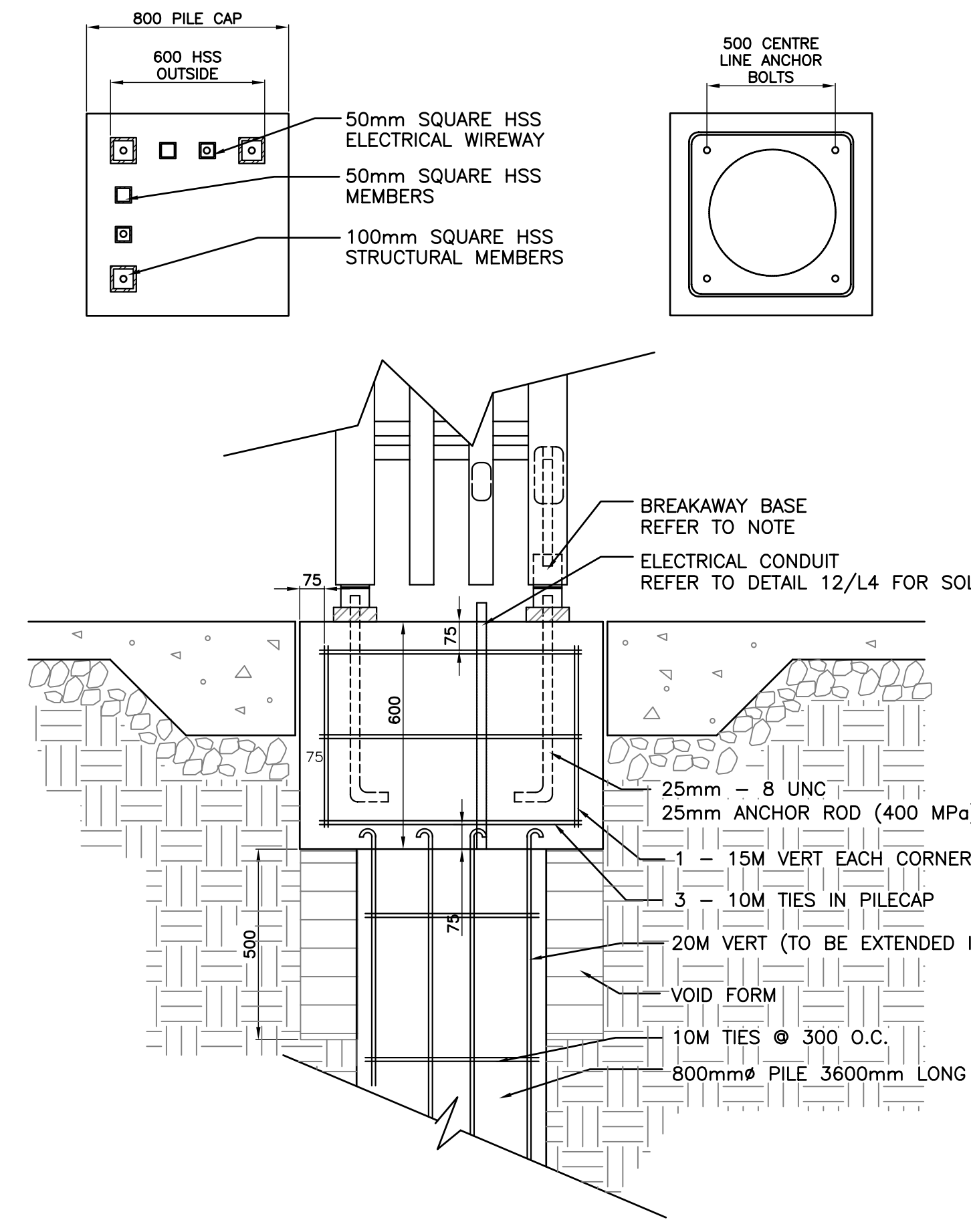


CLUB REGENT PARK AND RIDE

- GENERAL CONCRETE NOTES**
- ALL DIMENSIONS SHALL BE CHECKED AND VERIFIED PRIOR TO COMMENCING CONSTRUCTION.
 - CONFIRM THE LOCATION OF ALL SUBGRADE SERVICES PRIOR TO COMMENCING SITE WORK.
 - EXCAVATE ALL TOPSOIL, ORGANIC MATERIAL AND LOOSE OR UNSUITABLE FILL TO THE APPROVAL OF THE CONTRACT ADMINISTRATOR
 - EXCAVATE BELOW SLABS ON FILL TO PROVIDE A MINIMUM OF 8" OF GRANULAR FILL SHALL BE COMPACTED TO 95% MODIFIED PROCTOR DENSITY.
 - CONSTRUCTION JOINT LOCATIONS ARE TO BE APPROVED BY THE CONTRACT ADMINISTRATOR.

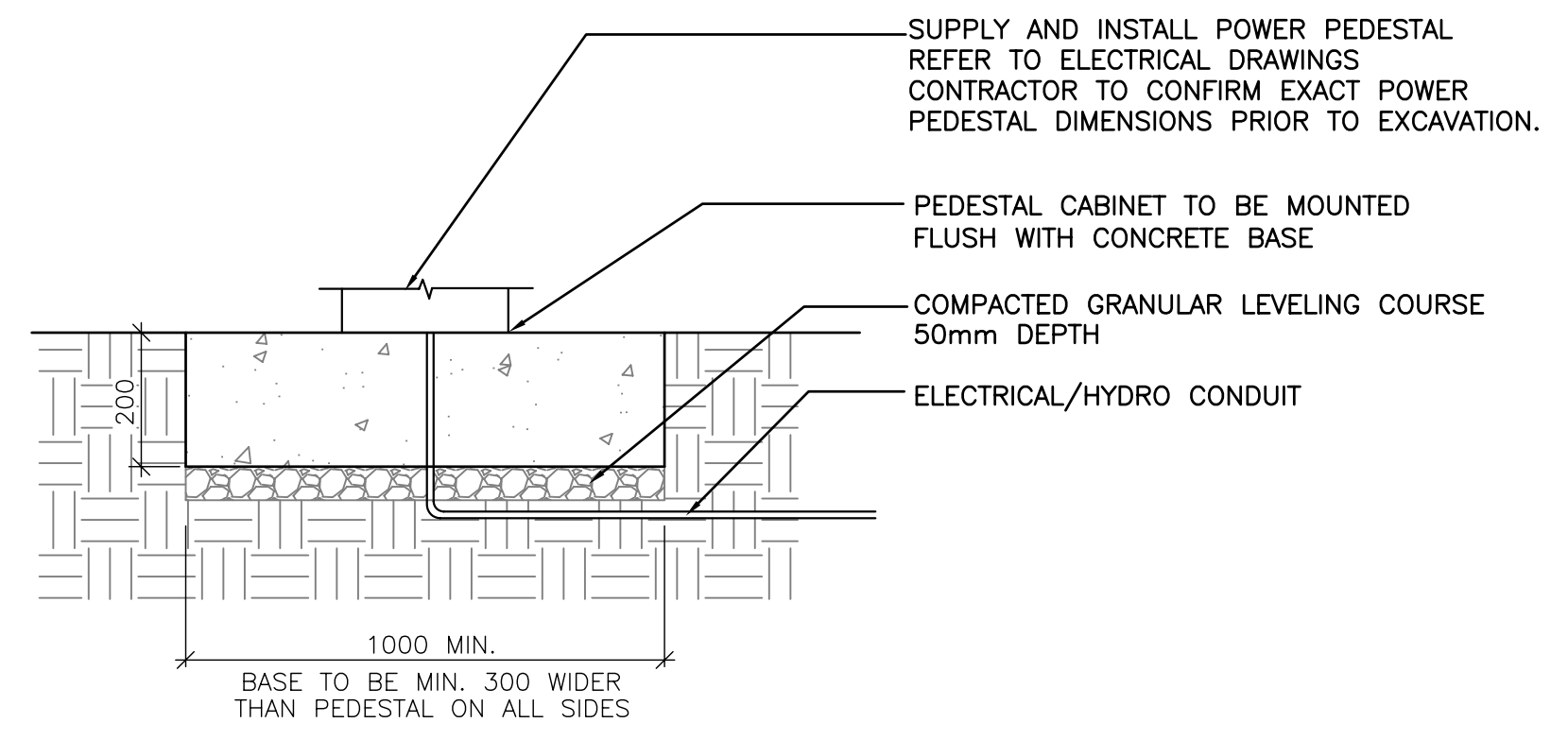
- REINFORCING NOTES**
- PERFORM CONCRETE REINFORCING WORK IN ACCORDANCE WITH CAN3-A23.3-M84 UNLESS INDICATED OTHERWISE.
 - ALL REINFORCING BARS SHALL BE DEFORMED BARS WITH A MINIMUM SPECIFIED YIELD STRENGTH 400MPa FOR 20M BARS AND 300MPa FOR 15M AND 10M BARS IN ACCORDANCE WITH CAN 630.18 M92.
 - COVER TO REINFORCING: SLABS 1" CLEAR TOP AND BOTTOM
 - BEFORE PLACING ENSURE REINFORCING IS CLEAN, FREE OF LOOSE SCALE, DIRT, OR OTHER FOREIGN COATING WHICH WOULD REDUCE THE BOND TO CONCRETE.
 - SHOP DRAWINGS SHALL BE SUBMITTED WHICH CLEARLY INDICATE BAR SIZES, SPACINGS, LOCATIONS AND QUANTITIES OF REINFORCING STEEL AND WIRE FABRIC, BENDING AND CUTTING SCHEDULES, AND SUPPORTING AND SPACING DEVICES FOR REVIEW PRIOR TO FABRICATION OF THE REINFORCING STEEL. DETAIL IN ACCORDANCE WITH THE LATEST ACI DETAILING MANUAL.
 - SEPIAS OF STRUCTURAL DRAWINGS WILL NOT BE ACCEPTED FOR USE AS SHOP DRAWINGS.

- CONCRETE NOTES**
- ALL CONCRETE WORK SHALL BE IN ACCORDANCE WITH CAN3-A23.1-M90 - CONCRETE MATERIALS AND METHODS OF CONCRETE CONSTRUCTION.
 - PROPORTION NORMAL DENSITY CONCRETE IN ACCORDANCE WITH CON-A23.1-M90. REFER TO SPECIFICATION FOR DESIGN MIXES.
 - CONSTRUCT FORMWORK, SHORING AND BRACING TO MEET DESIGN, CODE AND CAN3.A23.1-M90 REQUIREMENTS, ACCURATELY, SO THAT RESULTANT FINISHED CONCRETE CONFORMS TO SHAPES, LINES AND DIMENSIONS INDICATED ON THE DRAWINGS.
 - CONSTRUCTION JOINTS, POUR SCHEDULING AND WORK PROCEDURES SHALL BE DISCUSSED WITH THE CONSULTANT PRIOR TO COMMENCING CONSTRUCTION.
 - FOR COLD WEATHER CONCRETING ALL ICE, SNOW AND FROST SHALL BE REMOVED FROM FORMWORK AND THE TEMPERATURES OF ALL CONTACT SURFACES SHALL BE RAISED ABOVE 10°C FOR 24 HOURS PRIOR TO CASTING CONCRETE. CONCRETE SHALL BE NOT LESS THAN 20°C NOR MORE THAN 30°C FOR 3 DAYS AND NOT LESS THAN 5°C FOR AN ADDITIONAL 4 DAYS.
 - NOTIFY THE CONSULTANT 48 HOURS PRIOR TO POURING CONCRETE.
 - THREE CONCRETE TEST CYLINDERS AND ONE SLUMP TEST SHALL BE TAKEN FOR EVERY 75 CUBIC METRES OF EACH CLASS OF CONCRETE PLACED OR FOR EACH DAY OF CONCRETE PLACEMENT IF THE LATTER IS LESS THAN 75 CUBIC METRES. TESTING SHALL BE PERFORMED IN ACCORDANCE WITH CAN3-A23.1-M90.



CONCRETE PILE AND PILE CAP FOR ILLUMINATED SIGNAGE STRUCTURE

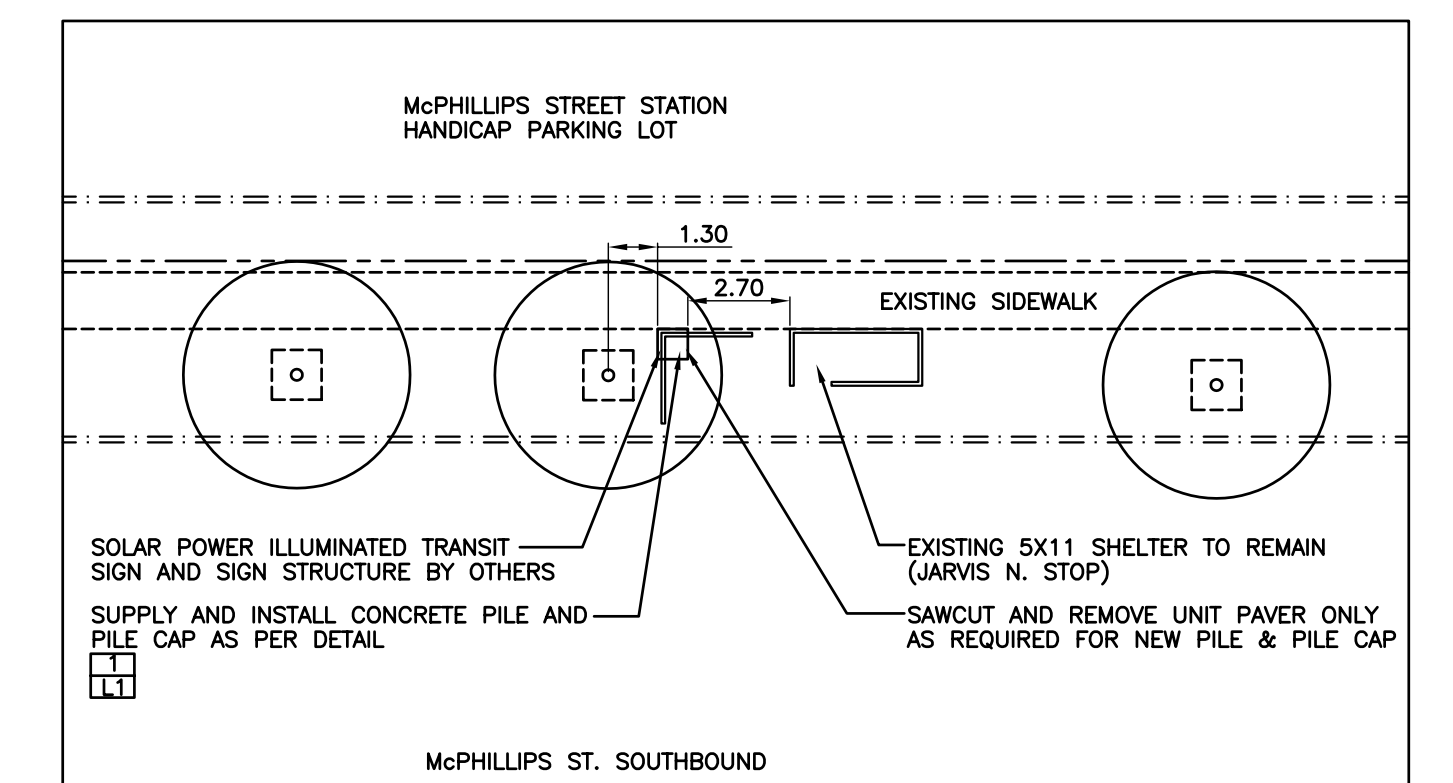
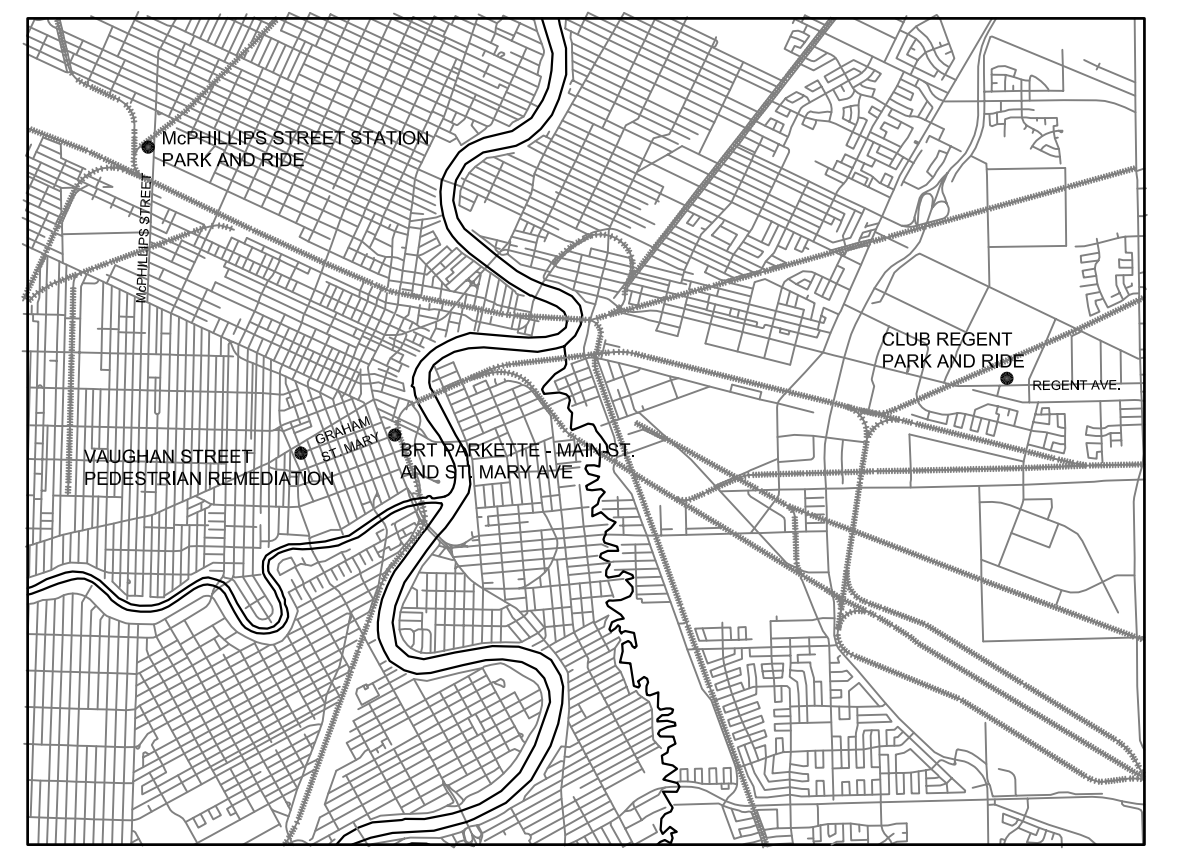
- [1] N.T.S.



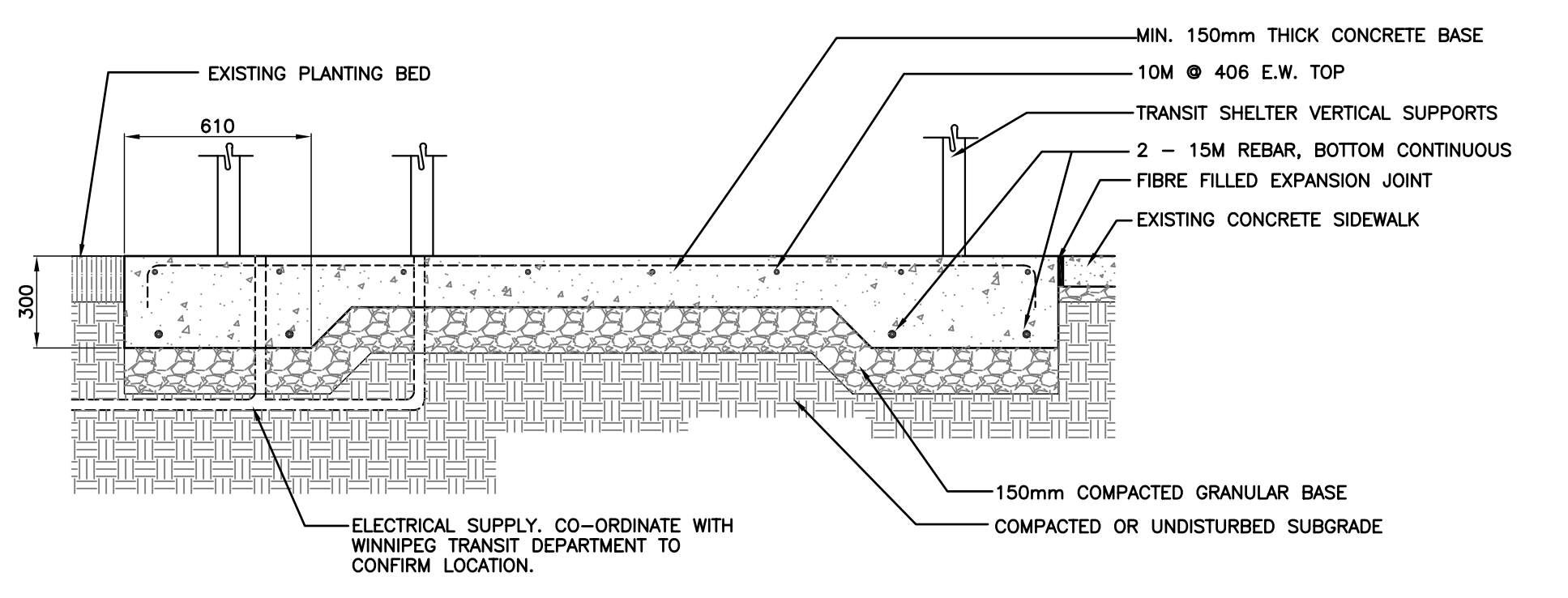
NOTE: EXACT LOCATION OF PEDESTAL TO BE CONFIRMED ON SITE BY WINNIPEG TRANSIT AND CONTRACT ADMINISTRATOR
CONTRACTOR TO COORDINATE WITH CLUB REGENT CASINO & WINNIPEG TRANSIT RE: CONDUIT LOCATIONS
GROUND ROD TO BE INSTALLED BY CONTRACTOR
SIZE AND LOCATION TO BE CONFIRMED BY PEDESTAL MANUFACTURER

POWER PEDESTAL BASE

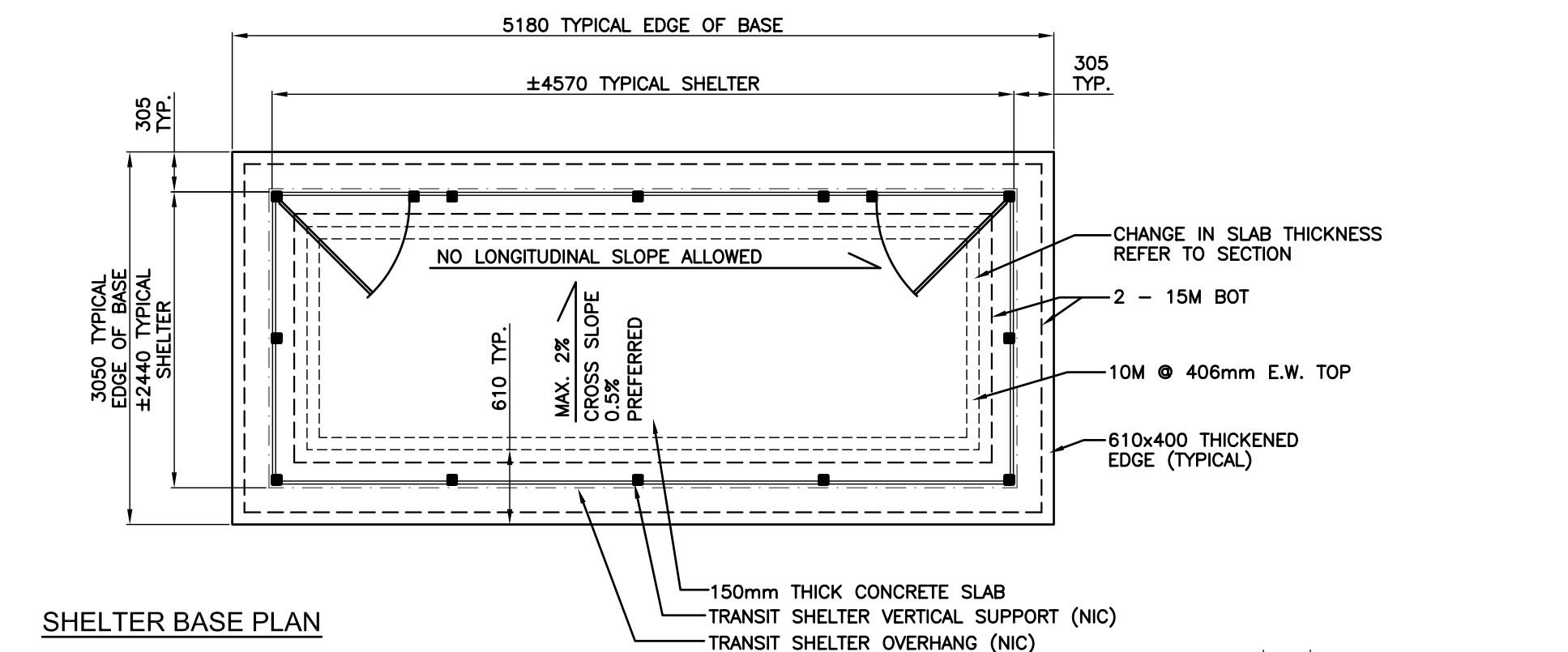
- [L1] N.T.S.



McPHILLIPS STREET STATION PARK AND RIDE



SHELTER BASE SECTION



SHELTER BASE PLAN

NOTE: CONFIRM FINAL CROSS SLOPE WITH CONTRACT ADMINISTRATOR PRIOR TO LAYOUT CONTRACTOR TO REPORT ANY DISCREPANCIES TO CONTRACT ADMINISTRATOR PRIOR TO LAYOUT.
CONTRACTOR TO VERIFY EXACT DIMENSIONS OF SHELTER PRIOR TO LAYOUT. SHELTER IS AVAILABLE FOR MEASUREMENT AT THE WINNIPEG TRANSIT YARDS, 421 OSBORNE ST. ADJUST BASE ACCORDINGLY.

SHELTER BASE

- [L1]

NOTES:

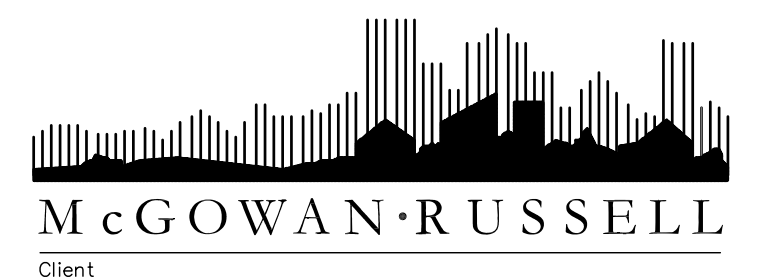
- CONTRACTOR TO VERIFY LOCATION OF ALL UTILITIES PRIOR TO CONSTRUCTION.
- CONTRACTOR TO CONFIRM ALL DIMENSIONS ON SITE PRIOR TO ANY CONSTRUCTION, AND REPORT ANY DISCREPANCIES TO THE CONTRACT ADMINISTRATOR.
- ALL LAYOUT TO BE APPROVED BY CONTRACT ADMINISTRATOR PRIOR TO CONSTRUCTION.
- ALL DIMENSION ARE IN METRIC UNLESS OTHERWISE NOTED.
- REFER ALSO TO WRITTEN SPECIFICATIONS.
- EXISTING TREES, SIDEWALK TO REMAIN, CURBS, AND TURF AREAS TO BE PROTECTED DURING CONSTRUCTION. ANY DAMAGE TO BE REPAIRED TO CITY OF WINNIPEG STANDARDS.
- WHERE CONTRACTOR IS REPAIRING EXISTING SURFACE MATERIALS, ALL BASE COURSES TO MATCH EXISTING CONDITION.
- CONTRACTOR TO REPAIR AT HIS OWN COST ANY DAMAGE DONE DURING CONSTRUCTION TO CITY OR ADJACENT PROPERTIES TO C.O.W. STANDARDS
- WHERE CONCRETE SIDEWALK IS REMOVED FOR CONSTRUCTION, CONTRACTOR TO REPAIR AS REQUIRED.

INNOVATIVE TRANSIT PROJECTS - BUS STOP IMPROVEMENTS

Winnipeg Transit Department

RELEASED FOR CONSTRUCTION
CITY OF WINNIPEG, TRANSIT DEPARTMENT

DATE



WINNIPEG TRANSIT

INNOVATIVE TRANSIT PROJECTS - BUS STOP IMPROVEMENTS

CASINO PARK AND RIDE STOPS

Project No. 04-008
Drawing No. L1