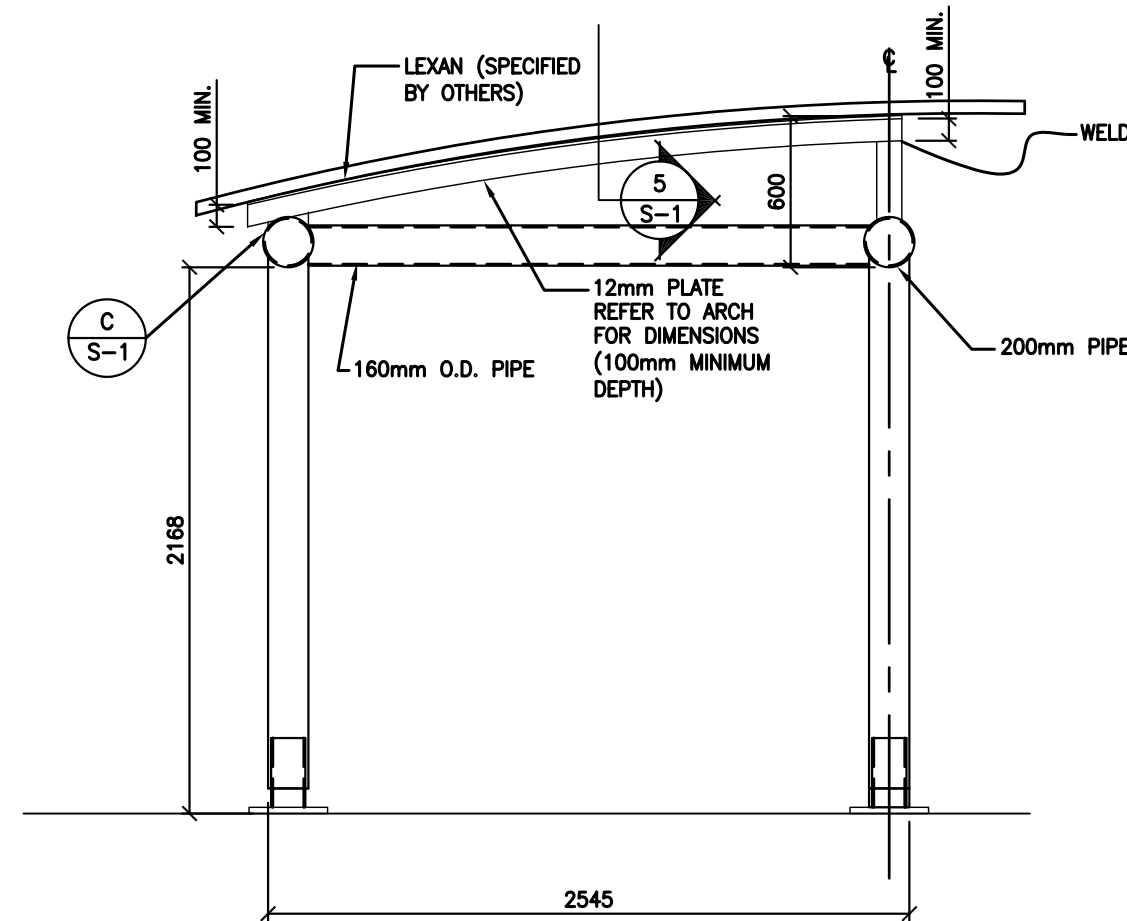
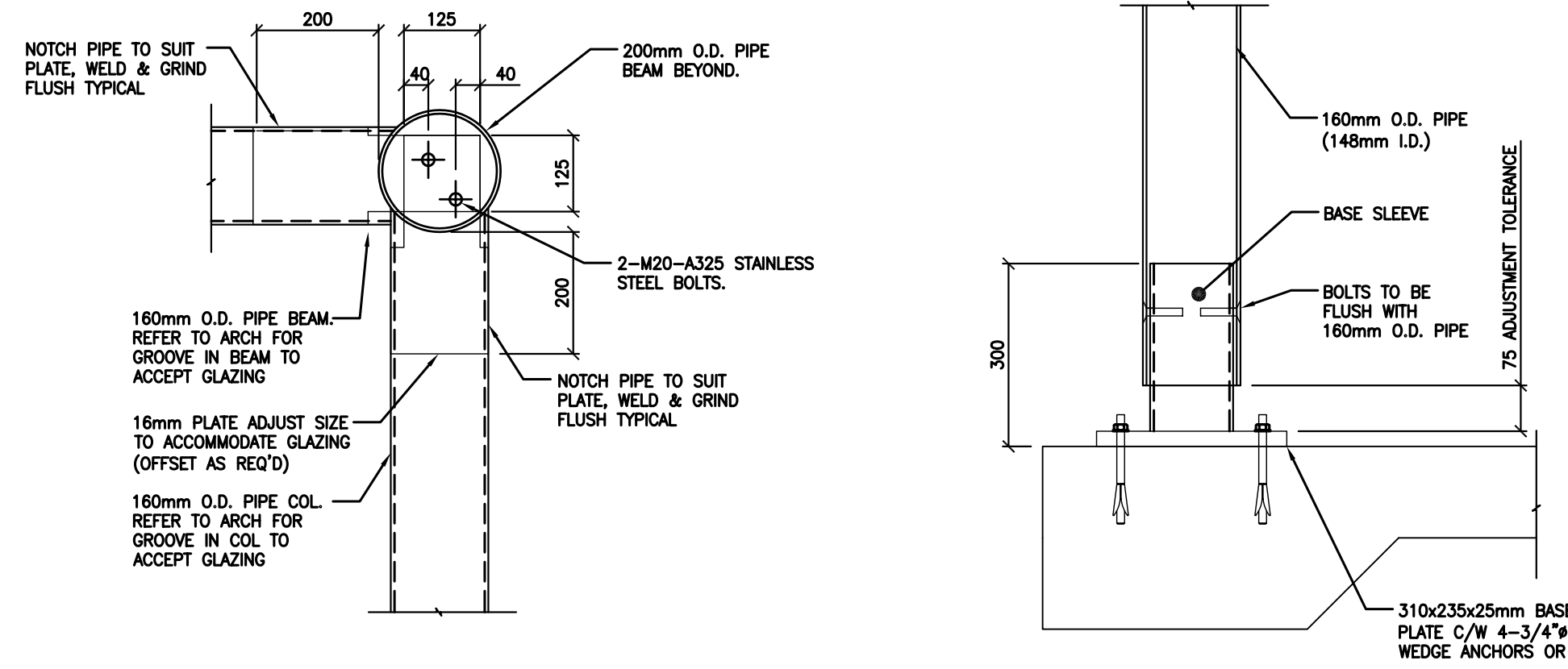


1 SHELTER FRAMING PLAN
SCALE 1/30

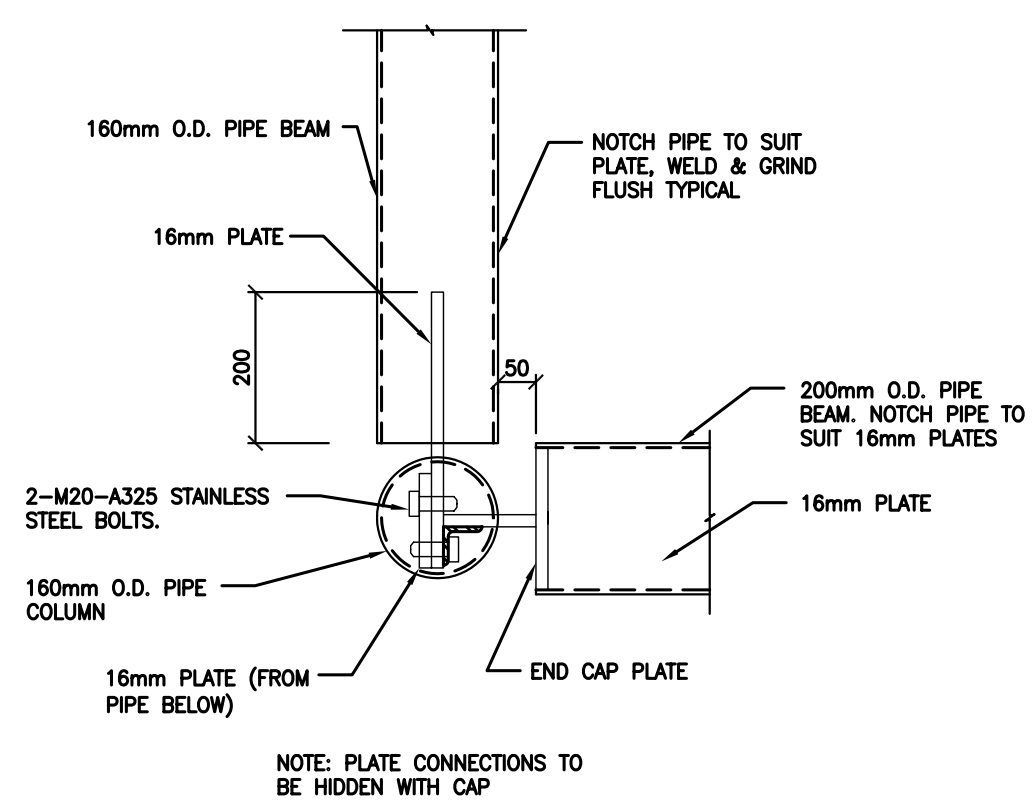


2 SECTION
SCALE 1/30

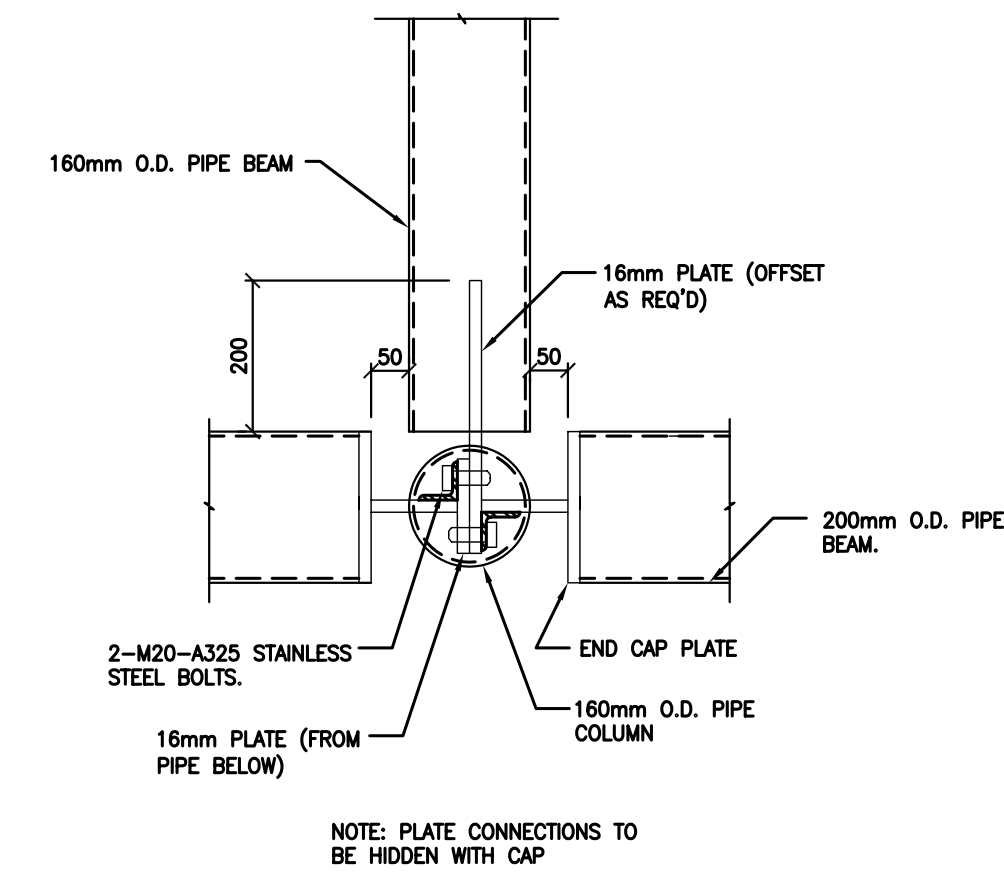


3 SECTION
SCALE 1/10

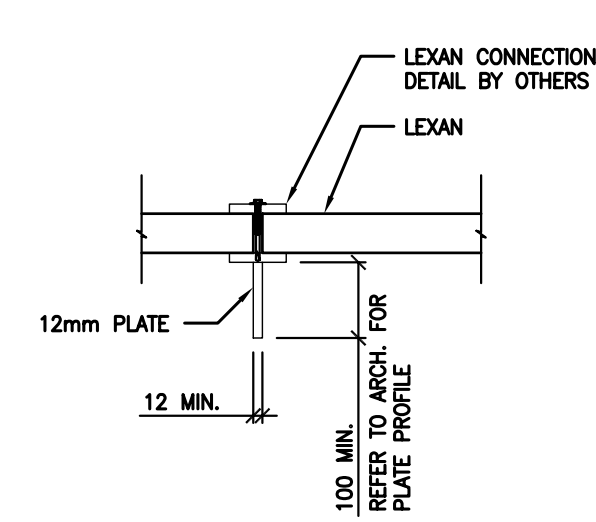
4 SECTION
SCALE 1/10



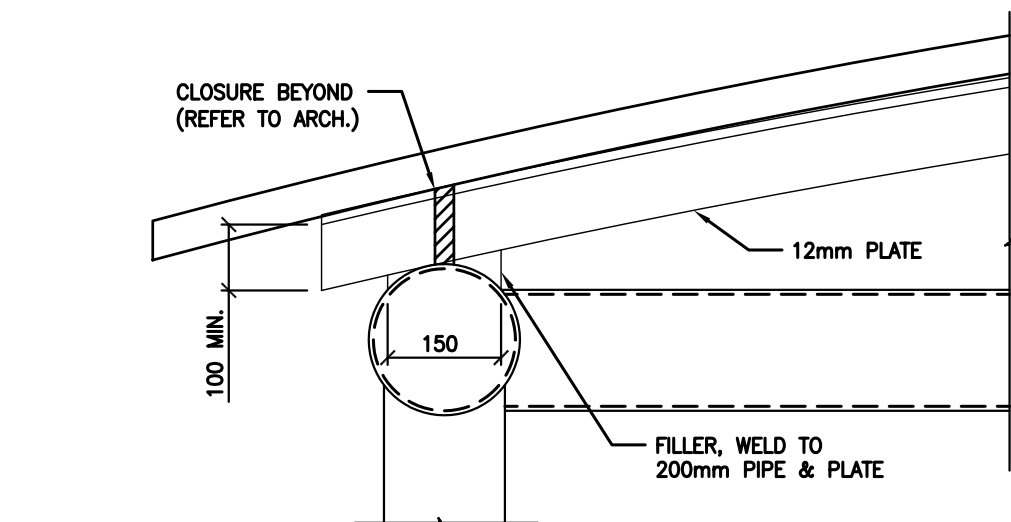
A DETAIL
SCALE 1/10



B DETAIL
SCALE 1/10



5 DETAIL
SCALE 1/10



C DETAIL
SCALE 1/10

NOTES:

- 1.) ALL FRAMING TO BE ALUMINUM - 6061-T6
- 2.) ALL WELDS AND WELDING PROCEDURES TO BE IN ACCORDANCE WITH APPLICABLE CSA REQUIREMENTS.
- 3.) ALL ALUMINUM SECTIONS MINIMUM 6mm WALL THICKNESS U.N.O

No.	PARTICULARS	DATE	BY
1.	ISSUED FOR REVIEW	AUG. 06/2004	GS
REVISIONS			
DRAWN BY: AW			
PRINTING DATE			

TOWER: #4096
TOWER ENGINEERING GROUP INC.
 208 - 897 CORYDON AVE. WINNIPEG, MB. R3M 0W7
 TEL: (204) 925-1150 FAX: (204) 925-1155

Drawings and specifications, as instruments of service are the property of the architect, the copyright in the same being reserved to them. No reproduction may be made without the permission of the architect, and when made, must bear their names. All prints to be returned.
 The contractor is to verify dimensions and date noted herein with conditions on the site and is held responsible for reporting discrepancy to the architect for adjustment.

PROJECT TITLE:
TRANSIT SHELTERS
WINNIPEG, MANITOBA

SHEET TITLE:
 SHELTER FRAMING PLAN/
 SECTIONS/
 DETAILS

SHEET No.