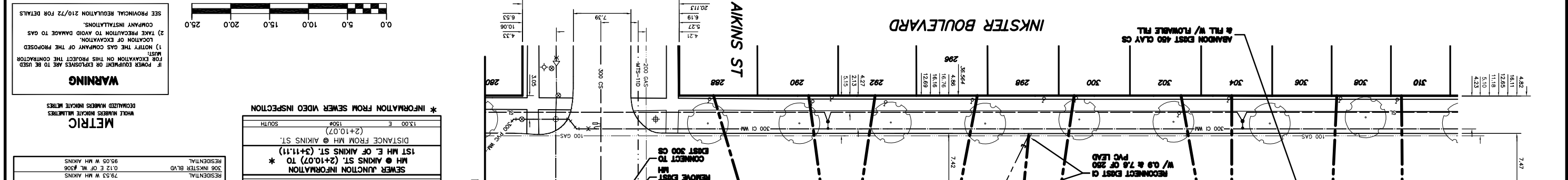


EXISTING	200 MM	WATERMAIN	200 MM	SL. HYDRO	150 MM	WATERMAIN	150 MM	150 MM		PROPOSED	EXISTING	LEGEND-PLAN	LEGEND-PROFILE	EXISTING	LEGEND-PLAN	LEGEND-PROFILE	PROPOSED	LEGEND-PLAN	LEGEND-PROFILE	EXISTING	LEGEND-PLAN	LEGEND-PROFILE	PROPOSED	LEGEND-PLAN	LEGEND-PROFILE	EXISTING	LEGEND-PLAN	LEGEND-PROFILE	PROPOSED	LEGEND-PLAN	LEGEND-PROFILE	EXISTING	LEGEND-PLAN	LEGEND-PROFILE	PROPOSED	LEGEND-PLAN	LEGEND-PROFILE
WATERMAIN	200	WATERMAIN	200	SL. HYDRO	150	WATERMAIN	150	150		PROPOSED	EXISTING	LEGEND-PLAN	LEGEND-PROFILE	EXISTING	LEGEND-PLAN	LEGEND-PROFILE	PROPOSED	LEGEND-PLAN	LEGEND-PROFILE	EXISTING	LEGEND-PLAN	LEGEND-PROFILE	PROPOSED	LEGEND-PLAN	LEGEND-PROFILE	EXISTING	LEGEND-PLAN	LEGEND-PROFILE	PROPOSED	LEGEND-PLAN	LEGEND-PROFILE	EXISTING	LEGEND-PLAN	LEGEND-PROFILE	PROPOSED	LEGEND-PLAN	LEGEND-PROFILE
WATERMAIN	200	WATERMAIN	200	SL. HYDRO	150	WATERMAIN	150	150		PROPOSED	EXISTING	LEGEND-PLAN	LEGEND-PROFILE	EXISTING	LEGEND-PLAN	LEGEND-PROFILE	PROPOSED	LEGEND-PLAN	LEGEND-PROFILE	EXISTING	LEGEND-PLAN	LEGEND-PROFILE	PROPOSED	LEGEND-PLAN	LEGEND-PROFILE	EXISTING	LEGEND-PLAN	LEGEND-PROFILE	PROPOSED	LEGEND-PLAN	LEGEND-PROFILE	EXISTING	LEGEND-PLAN	LEGEND-PROFILE	PROPOSED	LEGEND-PLAN	LEGEND-PROFILE
WATERMAIN	200	WATERMAIN	200	SL. HYDRO	150	WATERMAIN	150	150		PROPOSED	EXISTING	LEGEND-PLAN	LEGEND-PROFILE	EXISTING	LEGEND-PLAN	LEGEND-PROFILE	PROPOSED	LEGEND-PLAN	LEGEND-PROFILE	EXISTING	LEGEND-PLAN	LEGEND-PROFILE	PROPOSED	LEGEND-PLAN	LEGEND-PROFILE	EXISTING	LEGEND-PLAN	LEGEND-PROFILE	PROPOSED	LEGEND-PLAN	LEGEND-PROFILE	EXISTING	LEGEND-PLAN	LEGEND-PROFILE	PROPOSED	LEGEND-PLAN	LEGEND-PROFILE



SEWER JUNCTION INFORMATION

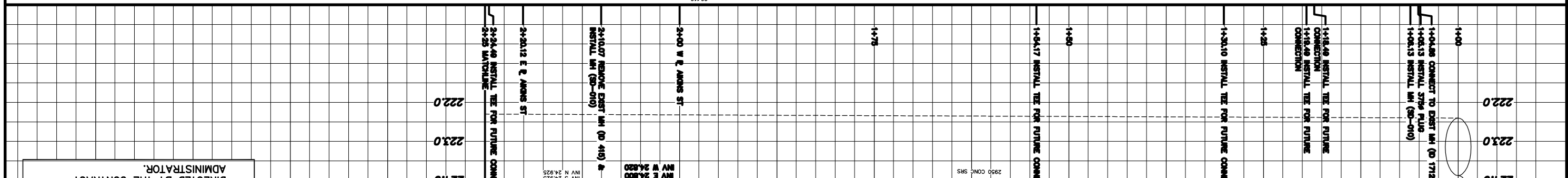
1ST MH E. OF SALTER ST. (2+10.07) TO *

1ST MH E. OF AIKINS ST. (2+11.11) TO *

STATION	TYPE	SIZE	INVERT	DATE
2+00	MANHOLE	150	3.90	150
2+00	MANHOLE	150	5.27	150
2+00	MANHOLE	150	8.19	150
2+00	MANHOLE	150	4.21	150
2+00	MANHOLE	150	5.27	150
2+00	MANHOLE	150	8.19	150
2+00	MANHOLE	150	4.21	150
2+00	MANHOLE	150	5.27	150
2+00	MANHOLE	150	8.19	150
2+00	MANHOLE	150	4.21	150
2+00	MANHOLE	150	5.27	150
2+00	MANHOLE	150	8.19	150
2+00	MANHOLE	150	4.21	150
2+00	MANHOLE	150	5.27	150
2+00	MANHOLE	150	8.19	150
2+00	MANHOLE	150	4.21	150
2+00	MANHOLE	150	5.27	150
2+00	MANHOLE	150	8.19	150
2+00	MANHOLE	150	4.21	150
2+00	MANHOLE	150	5.27	150
2+00	MANHOLE	150	8.19	150
2+00	MANHOLE	150	4.21	150
2+00	MANHOLE	150	5.27	150
2+00	MANHOLE	150	8.19	150

SEWER SERVICE INFORMATION

ADDRESS	SIZE	DATE
205 INKSTER BLVD	150	150
206 INKSTER BLVD	150	150
207 INKSTER BLVD	150	150
208 INKSTER BLVD	150	150
209 INKSTER BLVD	150	150
210 INKSTER BLVD	150	150
211 INKSTER BLVD	150	150
212 INKSTER BLVD	150	150
213 INKSTER BLVD	150	150
214 INKSTER BLVD	150	150
215 INKSTER BLVD	150	150
216 INKSTER BLVD	150	150
217 INKSTER BLVD	150	150
218 INKSTER BLVD	150	150
219 INKSTER BLVD	150	150
220 INKSTER BLVD	150	150
221 INKSTER BLVD	150	150
222 INKSTER BLVD	150	150
223 INKSTER BLVD	150	150
224 INKSTER BLVD	150	150
225 INKSTER BLVD	150	150
226 INKSTER BLVD	150	150
227 INKSTER BLVD	150	150
228 INKSTER BLVD	150	150
229 INKSTER BLVD	150	150
230 INKSTER BLVD	150	150
231 INKSTER BLVD	150	150
232 INKSTER BLVD	150	150
233 INKSTER BLVD	150	150
234 INKSTER BLVD	150	150
235 INKSTER BLVD	150	150
236 INKSTER BLVD	150	150
237 INKSTER BLVD	150	150
238 INKSTER BLVD	150	150
239 INKSTER BLVD	150	150
240 INKSTER BLVD	150	150
241 INKSTER BLVD	150	150
242 INKSTER BLVD	150	150
243 INKSTER BLVD	150	150
244 INKSTER BLVD	150	150
245 INKSTER BLVD	150	150
246 INKSTER BLVD	150	150
247 INKSTER BLVD	150	150
248 INKSTER BLVD	150	150
249 INKSTER BLVD	150	150
250 INKSTER BLVD	150	150



- CONSTRUCTION NOTES:
- SEWER TO BE RENEWED OFF-LINE BY TRENCHLESS METHODS.
 - CONFIRM THE LOCATION OF ALL SEWER SERVICES.
 - RENEW SEWER SERVICES TO R. SIDEWALKS, & WITHIN 1.0 m OF PAVEMENT TO BE CLASS 3.
 - BACKFILL UNDER PAVEMENT, IN PAVEMENT TO BE CLASS 3.
 - BACKFILL IN BOULEVARD TO BE CLASS 5.
 - SEWER SERVICE RISERS TO BE INSTALLED WHEN COMBINED SEWER EXCEEDS 4.25 m IN DEPTH.
 - INSTALL TEES INCLUDING RISERS & PLUG FOR FUTURE SERVICE CONNECTION OF EXISTING WYED SEWER SERVICES AS SHOWN ON DRAWINGS OR AS DIRECTED BY THE CONTRACT ADMINISTRATOR.
 - CATCHBASIN LEADS TO BE INSTALLED AT MINIMUM 1.0% SLOPE OR AS DIRECTED BY THE CONTRACT ADMINISTRATOR.