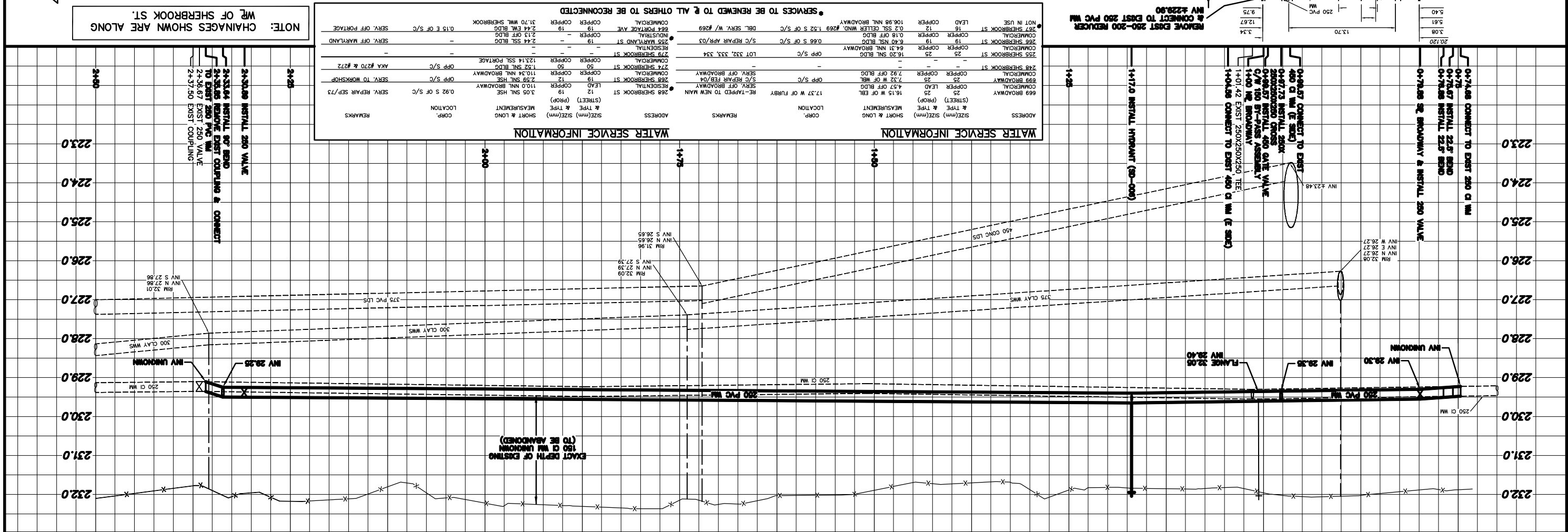
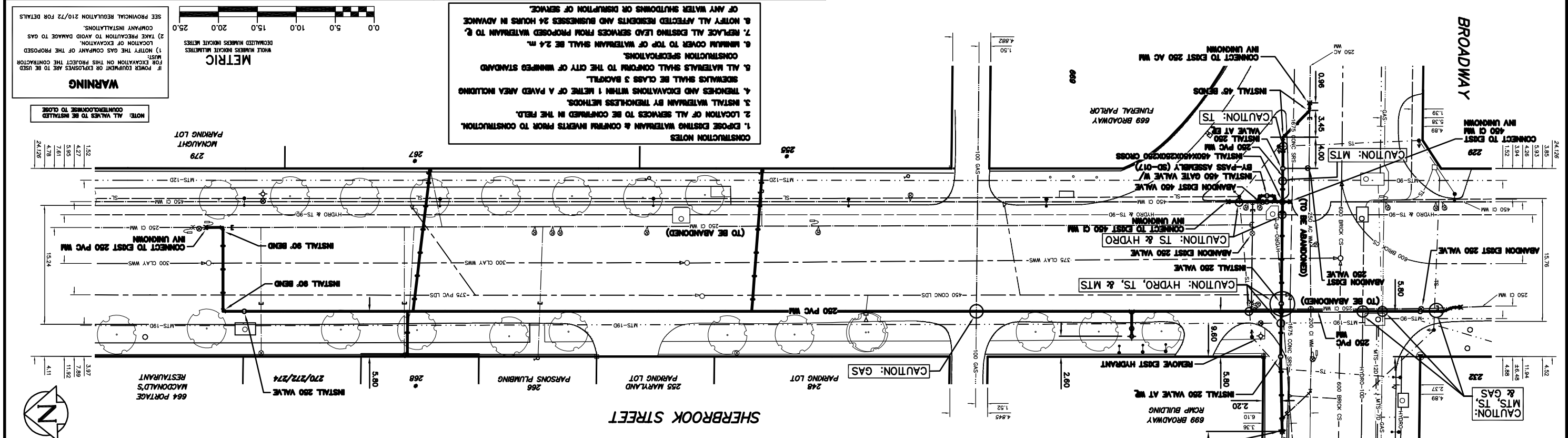


 THE CITY OF WINNIPEG WATER AND WASTE DEPARTMENT	2004 WATERMAIN RENEWALS BROADWAY TO SHERBROOK STREET 150 m NNL BROADWAY	SHEET 9 OF 9 CITY DRAWING NUMBER D-8583	 ENGINEER'S SEAL K.R. ZUREK PROFESSIONAL ENGINEER REG. NO. 405-2004 FLUID DATE: 2004 08 11	CITY OF WINNIPEG WATER AND WASTE ENGINEERING DIVISION	<table border="1" style="width:100%; border-collapse: collapse;"> <tr> <th>NO.</th> <th>REVISIONS</th> <th>DATE</th> <th>BY</th> </tr> <tr> <td> </td> <td> </td> <td> </td> <td> </td> </tr> </table>	NO.	REVISIONS	DATE	BY					<table border="1" style="width:100%; border-collapse: collapse;"> <tr> <th>DATE</th> <th>BY</th> <th>DESIGNED</th> <th>CHECKED</th> <th>APPROVED</th> <th>RELEASED FOR CONSTRUCTION</th> </tr> <tr> <td>2004 08 11</td> <td>NC/SC</td> <td>TW</td> <td>KZ</td> <td> </td> <td> </td> </tr> <tr> <td> </td> <td>1:50</td> <td>CJM</td> <td> </td> <td> </td> <td> </td> </tr> <tr> <td> </td> <td>HOR. SCALE</td> <td> </td> <td> </td> <td> </td> <td> </td> </tr> <tr> <td> </td> <td>VERTICAL</td> <td> </td> <td> </td> <td> </td> <td> </td> </tr> </table>	DATE	BY	DESIGNED	CHECKED	APPROVED	RELEASED FOR CONSTRUCTION	2004 08 11	NC/SC	TW	KZ				1:50	CJM					HOR. SCALE						VERTICAL				
NO.	REVISIONS	DATE	BY																																									
DATE	BY	DESIGNED	CHECKED	APPROVED	RELEASED FOR CONSTRUCTION																																							
2004 08 11	NC/SC	TW	KZ																																									
	1:50	CJM																																										
	HOR. SCALE																																											
	VERTICAL																																											



NOTE: CHANGES SHOWN ARE ALONG W.P. OF SHERBROOK ST.

STATION	DESCRIPTION
24-30.08	INSTALL 250 VALVE
24-33.64	INSTALL 90° BEND
24-35.85	REMOVE EXIST COUPLING & CONNECT TO EXIST 250 PVC WM
24-36.87	EXIST 250 VALVE
24-37.50	EXIST COUPLING

WATER SERVICE INFORMATION

ADDRESS	CONP.	LOCATION	REMARKS
669 BROADWAY	COMMERCIAL	17.37 W OF CURB	RE-TAPPED TO NEW MAIN
899 BROADWAY	COMMERCIAL	5/2 REPAIR R/W	SERV. OFF BROADWAY
255 SHERBROOK ST	COMMERCIAL	16.20 S of EBL	REPAIR
266 SHERBROOK ST	COMMERCIAL	6.43 N of BROADWAY	REPAIR
279 SHERBROOK ST	RESIDENTIAL	123.14 S of PORTAGE	REPAIR
277 SHERBROOK ST	RESIDENTIAL	1.52 S of BROADWAY	REPAIR
278 SHERBROOK ST	RESIDENTIAL	11.03 N of BROADWAY	REPAIR
288 SHERBROOK ST	RESIDENTIAL	3.05 S of HSE	REPAIR
289 SHERBROOK ST	RESIDENTIAL	12	REPAIR
295 SHERBROOK ST	COMMERCIAL	19	REPAIR
296 SHERBROOK ST	COMMERCIAL	12	REPAIR
297 SHERBROOK ST	COMMERCIAL	0.2 S of S/C	REPAIR
298 SHERBROOK ST	COMMERCIAL	0.15 S of S/C	REPAIR
299 SHERBROOK ST	COMMERCIAL	0.2 S of S/C	REPAIR
300 SHERBROOK ST	COMMERCIAL	0.15 S of S/C	REPAIR
301 SHERBROOK ST	COMMERCIAL	0.15 S of S/C	REPAIR
302 SHERBROOK ST	COMMERCIAL	0.15 S of S/C	REPAIR
303 SHERBROOK ST	COMMERCIAL	0.15 S of S/C	REPAIR
304 SHERBROOK ST	COMMERCIAL	0.15 S of S/C	REPAIR
305 SHERBROOK ST	COMMERCIAL	0.15 S of S/C	REPAIR
306 SHERBROOK ST	COMMERCIAL	0.15 S of S/C	REPAIR
307 SHERBROOK ST	COMMERCIAL	0.15 S of S/C	REPAIR
308 SHERBROOK ST	COMMERCIAL	0.15 S of S/C	REPAIR
309 SHERBROOK ST	COMMERCIAL	0.15 S of S/C	REPAIR
310 SHERBROOK ST	COMMERCIAL	0.15 S of S/C	REPAIR

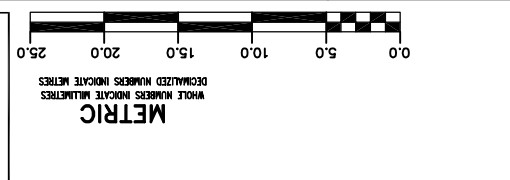
WATER SERVICE INFORMATION

ADDRESS	CONP.	LOCATION	REMARKS
669 BROADWAY	COMMERCIAL	17.37 W OF CURB	RE-TAPPED TO NEW MAIN
899 BROADWAY	COMMERCIAL	5/2 REPAIR R/W	SERV. OFF BROADWAY
255 SHERBROOK ST	COMMERCIAL	16.20 S of EBL	REPAIR
266 SHERBROOK ST	COMMERCIAL	6.43 N of BROADWAY	REPAIR
279 SHERBROOK ST	RESIDENTIAL	123.14 S of PORTAGE	REPAIR
277 SHERBROOK ST	RESIDENTIAL	1.52 S of BROADWAY	REPAIR
278 SHERBROOK ST	RESIDENTIAL	11.03 N of BROADWAY	REPAIR
288 SHERBROOK ST	RESIDENTIAL	3.05 S of HSE	REPAIR
289 SHERBROOK ST	RESIDENTIAL	12	REPAIR
295 SHERBROOK ST	COMMERCIAL	19	REPAIR
296 SHERBROOK ST	COMMERCIAL	12	REPAIR
297 SHERBROOK ST	COMMERCIAL	0.2 S of S/C	REPAIR
298 SHERBROOK ST	COMMERCIAL	0.15 S of S/C	REPAIR
299 SHERBROOK ST	COMMERCIAL	0.2 S of S/C	REPAIR
300 SHERBROOK ST	COMMERCIAL	0.15 S of S/C	REPAIR
301 SHERBROOK ST	COMMERCIAL	0.15 S of S/C	REPAIR
302 SHERBROOK ST	COMMERCIAL	0.15 S of S/C	REPAIR
303 SHERBROOK ST	COMMERCIAL	0.15 S of S/C	REPAIR
304 SHERBROOK ST	COMMERCIAL	0.15 S of S/C	REPAIR
305 SHERBROOK ST	COMMERCIAL	0.15 S of S/C	REPAIR
306 SHERBROOK ST	COMMERCIAL	0.15 S of S/C	REPAIR
307 SHERBROOK ST	COMMERCIAL	0.15 S of S/C	REPAIR
308 SHERBROOK ST	COMMERCIAL	0.15 S of S/C	REPAIR
309 SHERBROOK ST	COMMERCIAL	0.15 S of S/C	REPAIR
310 SHERBROOK ST	COMMERCIAL	0.15 S of S/C	REPAIR

WARNING

FOR POWER EQUIPMENT OR EXPLOSIVES ARE TO BE USED FOR EXCAVATION ON THIS PROJECT THE CONTRACTOR MUST:

- NOTIFY THE GAS COMPANY OF THE PROPOSED LOCATION OF EXCAVATION.
- TAKE PRECAUTION TO AVOID DAMAGE TO GAS COMPANY INSTALLATIONS.
- SEE PROVINCIAL REGULATION 210/72 FOR DETAILS.



CONSTRUCTION NOTES

- EXPOSE EXISTING WATERMAIN & CONFORM INVERTS PRIOR TO CONSTRUCTION.
- LOCATION OF ALL SERVICES TO BE CONFIRMED IN THE FIELD.
- INSTALL WATERMAIN BY TRENCHLESS METHODS.
- TRENCHES AND EXCAVATIONS WITHIN 1 METRE OF A PAVED AREA INCLUDING SIDEWALKS SHALL BE CLASS 3 BACKFILL.
- ALL WATERMAINS SHALL CONFORM TO THE CITY OF WINNIPEG STANDARD CONSTRUCTION SPECIFICATIONS.
- MINIMUM COVER TO TOP OF WATERMAIN SHALL BE 2.4 m.
- REPLACE ALL EXISTING LEAD SERVICES FROM PROPOSED WATERMAIN TO & 8. NOTIFY ALL AFFECTED RESIDENTS AND BUSINESSES 24 HOURS IN ADVANCE OF ANY WATER SHUTDOWNS OR DISRUPTION OF SERVICE.