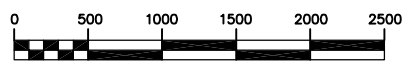
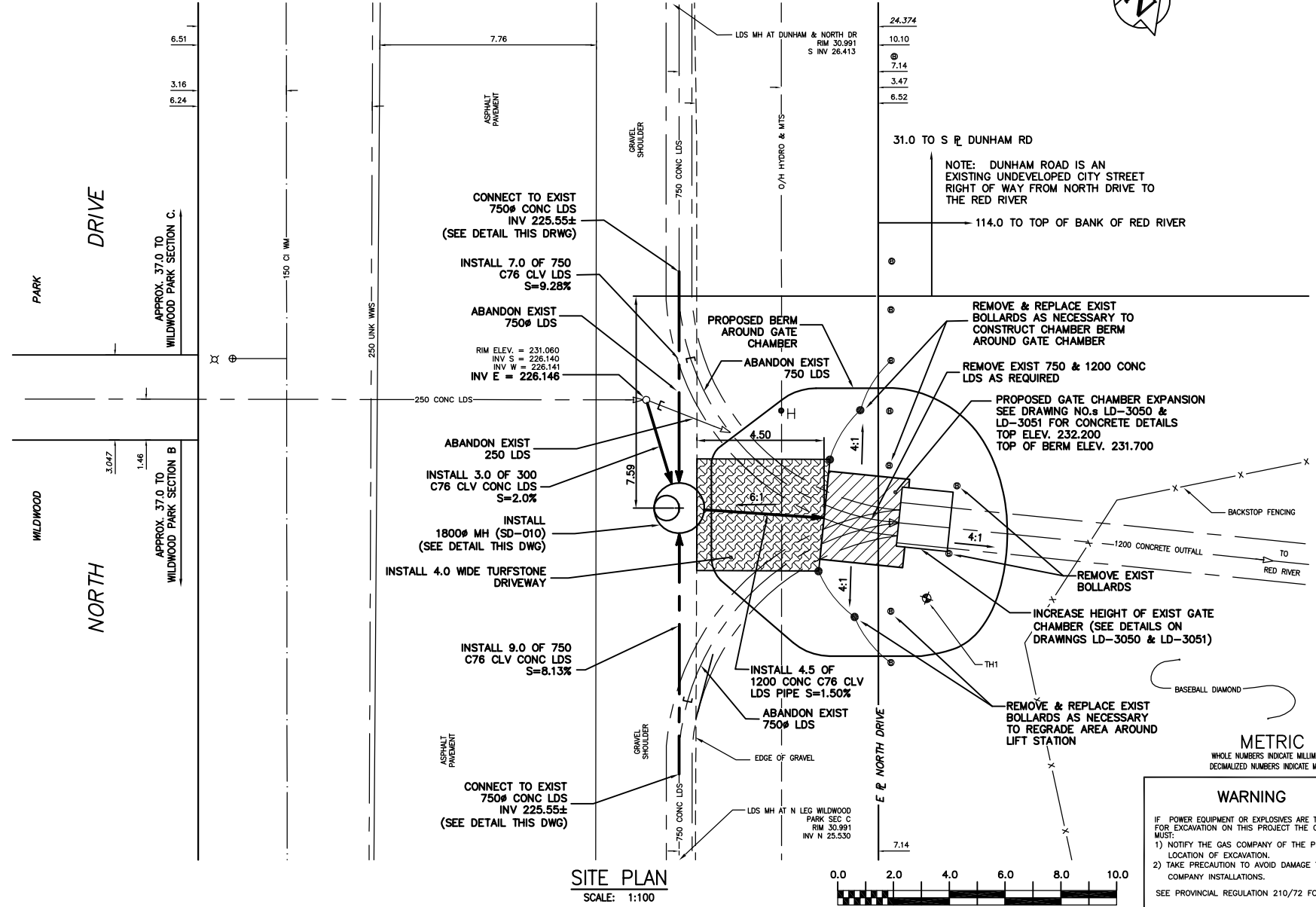
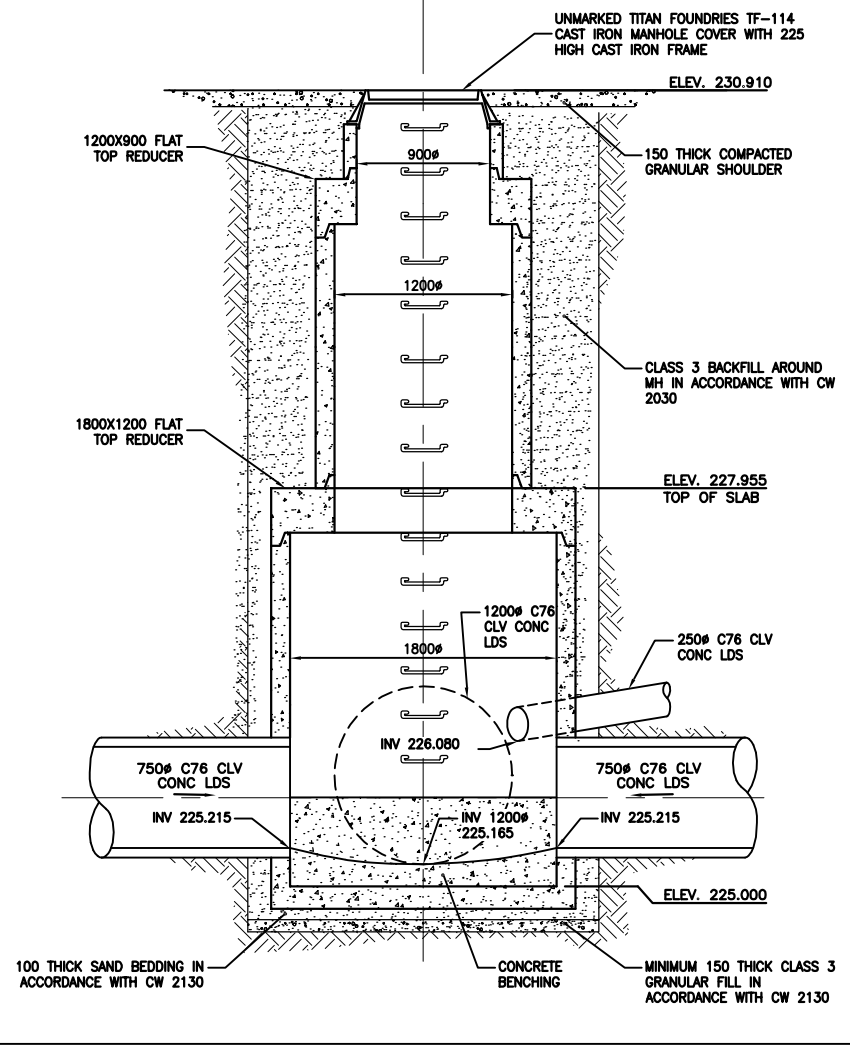
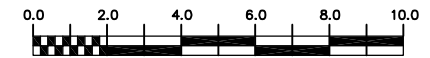


- CONSTRUCTION NOTES:**
- RESTORE ALL DISTURBED GRASS AREAS & BERM WITH IMPORTED TOP SOIL & SOD IN ACCORDANCE WITH CW 3510.
 - LEAVE SLUICE GATE IN OPEN POSITION AT ALL TIMES EXCEPT WHEN ON-SITE WORKING ON GATE.
 - PROVIDE TEMPORARY PUMPING OF FLOW IN LAND DRAINAGE SEWER AS REQUIRED DURING CONSTRUCTION.
 - PREVENT EXCAVATED MATERIAL, BACKFILL MATERIAL AND SOIL/WATER SLURRY FROM ENTERING LDS OUTFALL TO THE RIVER.
 - INSTALL MANHOLE IN ACCORDANCE WITH CW 2130.
 - INSTALL LDS USING TRENCHLESS METHODS.
 - CONTRACTOR IS ADVISED THERE IS A CONSTANT FLOW OF 15 LITRES/SECOND (200 IPGM) IN THE 750 LDS ON NORTH DRIVE FROM THE SOUTH THAT WILL HAVE TO BE MAINTAINED DURING CONSTRUCTION.



1800mm MANHOLE DETAILS



200 WM	WATERMAIN	200 WM	SL, HYDRO	150 WM	WATERMAIN	150 WM
+	HYDRANT	+	MTS	+	HYDRANT	+
o	VALVE	o	TRAFFIC SIGNALS	o	VALVE	o
525 LDS	LAND DRAINAGE SEWER	525 LDS	GAS	50 GAS	300 LDS	LAND DRAINAGE SEWER
375 WWS	WASTEWATER SEWER	375 WWS	SURVEY BAR	250 WWS	250 WWS	WASTEWATER SEWER
o	MANHOLE	o	FENCE	x	o	PROFILE
□	CATCH BASIN	□	POLE - HYDRO, MTS		□	GROUND ABOVE PIPE
∇	CURB INLET	∇	CURB STOP	o	o	Q DITCH (SOUTH & EAST)
+	JUNCTIONS	+	GUY ANCHOR	+	+	GUTTER (NORTH & WEST)
+	CULVERT	+	LIGHT STANDARD	+	+	
+	ANODE	+	TREE	+	+	
EXISTING	LEGEND-PLAN	PROPOSED	EXISTING	LEGEND-PLAN	PROPOSED	EXISTING
						LEGEND-PROFILE
						PROPOSED

LOCATION APPROVED UNDERGROUND STRUCTURES		B.M. ELEV.	FIELD BOOK #
SUPV. U/G STRUCTURES COMMITTEE <td>DATE <td></td> <td></td> </td>	DATE <td></td> <td></td>		
NOTE: LOCATION OF UNDERGROUND STRUCTURES AS SHOWN ARE BASED ON THE BEST INFORMATION AVAILABLE BUT NO GUARANTEE IS GIVEN THAT THE GIVEN LOCATIONS ARE EXACT. CONFIRMATION OF EXISTENCE AND EXACT LOCATION OF ALL SERVICES MUST BE OBTAINED FROM THE INDIVIDUAL UTILITIES BEFORE PROCEEDING WITH CONSTRUCTION.			
NO.	REVISIONS	DATE	BY

CITY OF WINNIPEG WATER AND WASTE ENGINEERING DIVISION

DESIGNED BY: DGS
CHECKED BY: TW
DRAWN BY: SW/WKT
APPROVED BY: KZ
HOR. SCALE: AS
VERTICAL: SHOWN
DATE: 2004.09.01

ENGINEER'S SEAL
ORIGINAL SIGNED BY K.R. ZUREK
04/09/03

THE CITY OF WINNIPEG WATER AND WASTE DEPARTMENT

2004 OUTFALL GATE CHAMBER UPGRADES
DUNHAM ROAD
LDS OUTFALL GATE CHAMBER EXPANSION
SITE PLAN

SHEET 4 OF 14
CITY DRAWING NUMBER
LD-3049

WARNING
IF POWER EQUIPMENT OR EXPLOSIVES ARE TO BE USED FOR EXCAVATION ON THIS PROJECT THE CONTRACTOR MUST:
1) NOTIFY THE GAS COMPANY OF THE PROPOSED LOCATION OF EXCAVATION.
2) TAKE PRECAUTION TO AVOID DAMAGE TO GAS COMPANY INSTALLATIONS.
SEE PROVINCIAL REGULATION 210/72 FOR DETAILS