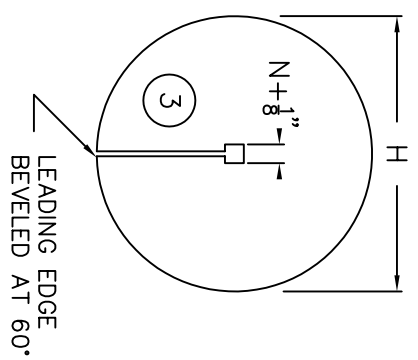
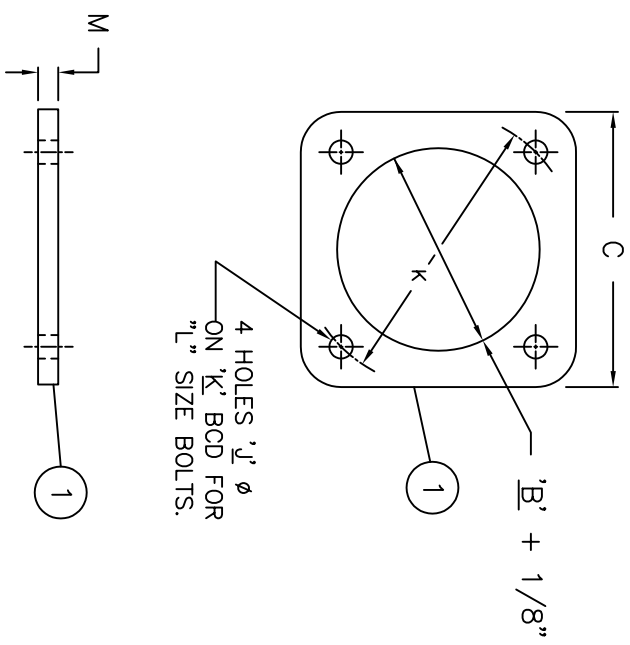
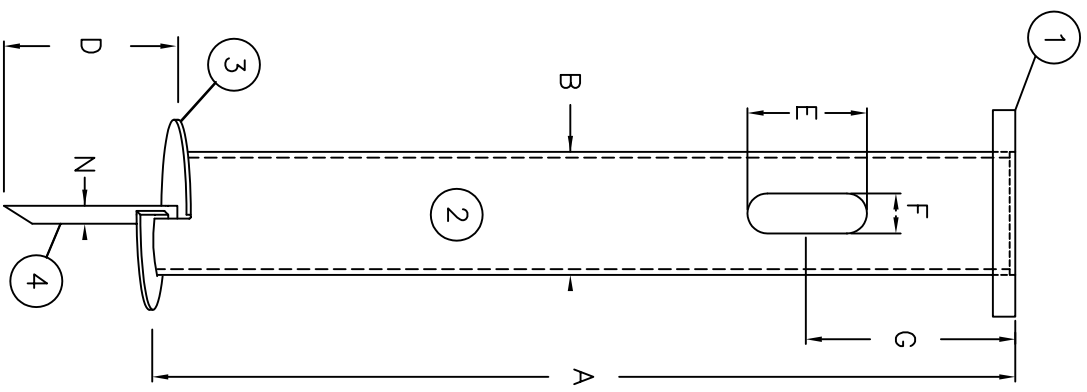



ITEM No.	No. RECD.	DESCRIPTION	MATERIAL	DMC No.
1				
2				
3				
4				
5				

FINISH
HOT DIP GALVANIZE TO CSA G164



MPA	UP	TO	A	B	C	D	E	F	G	H	J	K	L	M	N
MPA 20	UP	TO 20 FEET	6'-0"	6 5/8"	10"	10"	10"	2"	18"	11 1/2"	1 1/4"	10"	1"	1"	1"
MPA 25	UP	TO 30 FEET	8'-0"	8 1/4"	11"	10"	10"	3"	18"	13 1/2"	1 1/4"	11"	1"	1"	1 1/4"
MPA 30	UP	TO 35 FEET	8'-0"	8 1/4"	14"	10"	12"	3"	18"	13 1/2"	1 1/4"	14"	1"	1"	1 1/4"
MPA 35	UP	TO 40 FEET	10'-0"	10 3/4"	14"	10"	12"	3"	18"	15 1/2"	1 1/2"	14"	1 1/4"	1 1/4"	1 1/4"

No. RECD.	W.O. No.	FILE No.	DATE	P.O. No.	CUSTOMER	LOCATION
REV. No.	CHANGE	BY	APP. DATE	BY	APP. DATE	
DRAWN BY	G.C.	APP. BY	SCALE	DATE	DMC No.	REV. No.
TITLE				MPA-C		
SCREW BASE ANCHOR				0		


MARTEC MFG. (SALES) LTD.
 P.O. BOX 48021, RPO REGENT
 WINNIPEG, MANITOBA, R3C 5G7
 TEL: (204)987-3110 FAX: (204)987-3112