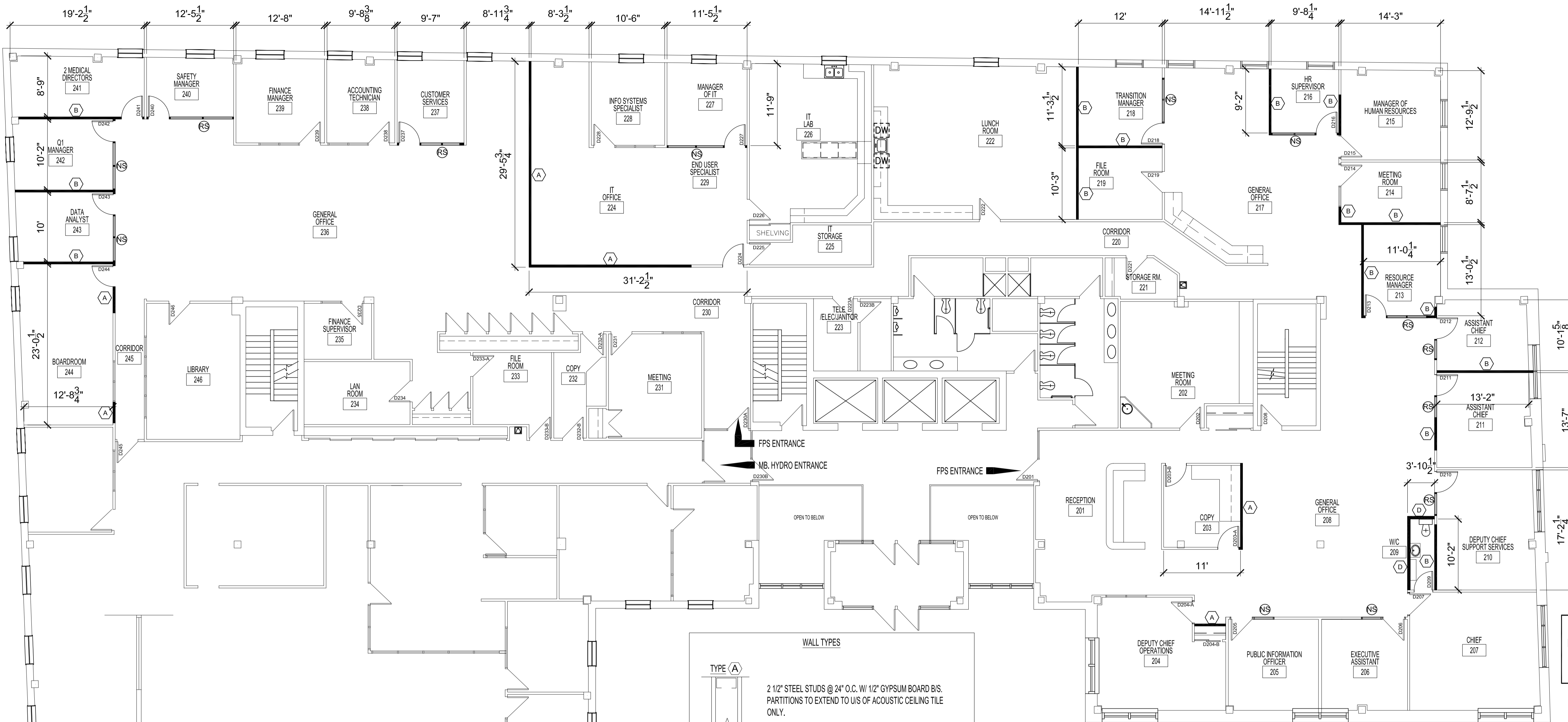


NOTES :



WALL TYPES

TYPE (A)
 2 1/2" STEEL STUDS @ 24" O.C. W/ 1/2" GYPSUM BOARD B/S. PARTITIONS TO EXTEND TO U/S OF ACOUSTIC CEILING TILE ONLY.

TYPE (B)
 2 1/2" STEEL STUDS @ 24" O.C. W/ 1/2" GYPSUM BOARD B/S C/W SOUND ATTENUATION BATT. PARTITIONS TO EXTEND TO U/S OF ACOUSTIC CEILING TILE ONLY UNLESS NEW PARTITION IS FILLING AN EXISTING WALL OPENING.

TYPE (C)
 2 1/2" STEEL STUDS @ 24" O.C. W/ 1/2" GYPSUM BOARD B/S. PARTITIONS TO EXTEND TO U/S OF STEEL DECK. PROVIDE CAULKING AROUND PENETRATIONS THRU PARTITIONS.

TYPE (D)
 PLUMBING WALL FOR WASHROOM 209
 3 5/8" STEEL STUDS @ 24" O.C. W/ 1/2" GYPSUM BOARD B/S C/W SOUND ATTENUATION BATT. PARTITIONS TO EXTEND TO U/S OF STEEL DECKING. PROVIDE CAULKING AROUND PENETRATIONS THRU PARTITIONS.

LEGEND

- NEW WALLS - SEE TYPES
- NEW SIDELITE
- REUSED SIDELITES FROM DEMOLITION
- EXISTING DOORS - SEE SCHED. ON A-3
- NEW OR REUSED DOORS - SEE SCHED. ON A-3

ORIGINAL SEALED BY:
 R.K. FOK LI Arch.
 Date: 2004/10/13

NO.	REVISION/DESCRIPTION	BY	DATE
SEALS			

DRAWN BY	MMK	CHECKED BY	APPROVED
DATE	2004.10.13	USER APPROVAL	

CITY OF WINNIPEG
 PLANNING, PROPERTY & DEVELOPMENT DEPARTMENT
 CIVIC ACCOMMODATIONS DIVISION
 300 - 65 GARRY ST. R3C 4K4

PROJECT
 Fire Paramedic Services
 Executive Office Renovation
 185 KING STREET - MANDARIN BLDG. - SECOND FLOOR

SHEET TITLE
 Renovation Plan

SCALE	PROJECT NO.	SHEET NO.
1/8"=1'-0"	2004-060	A-2