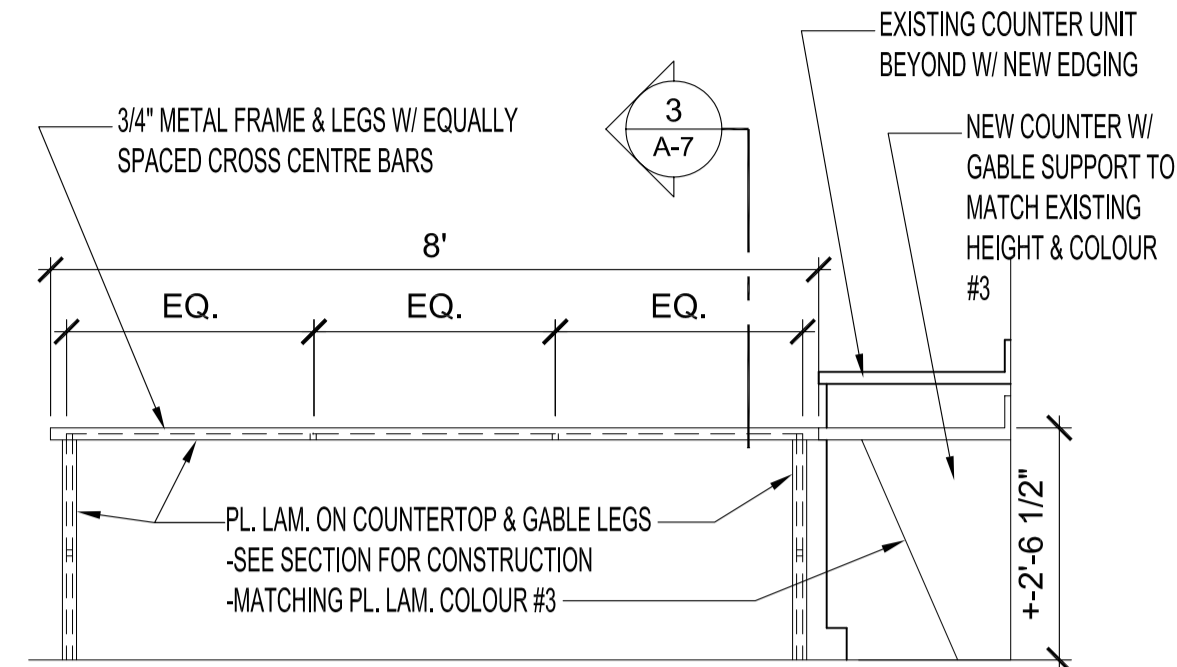
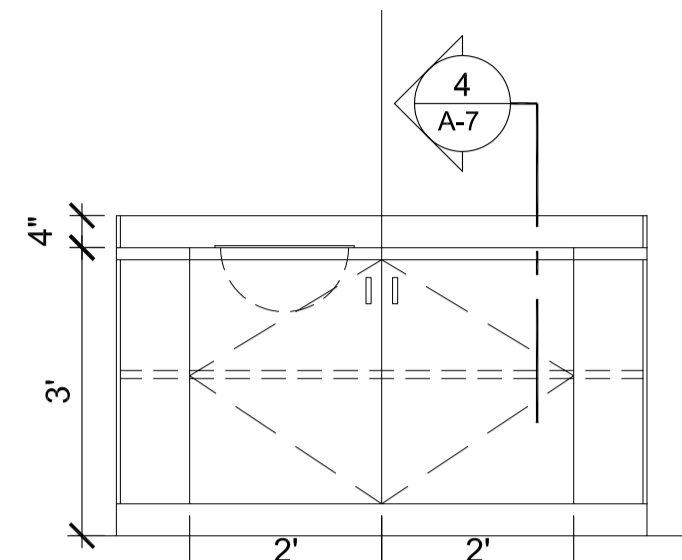


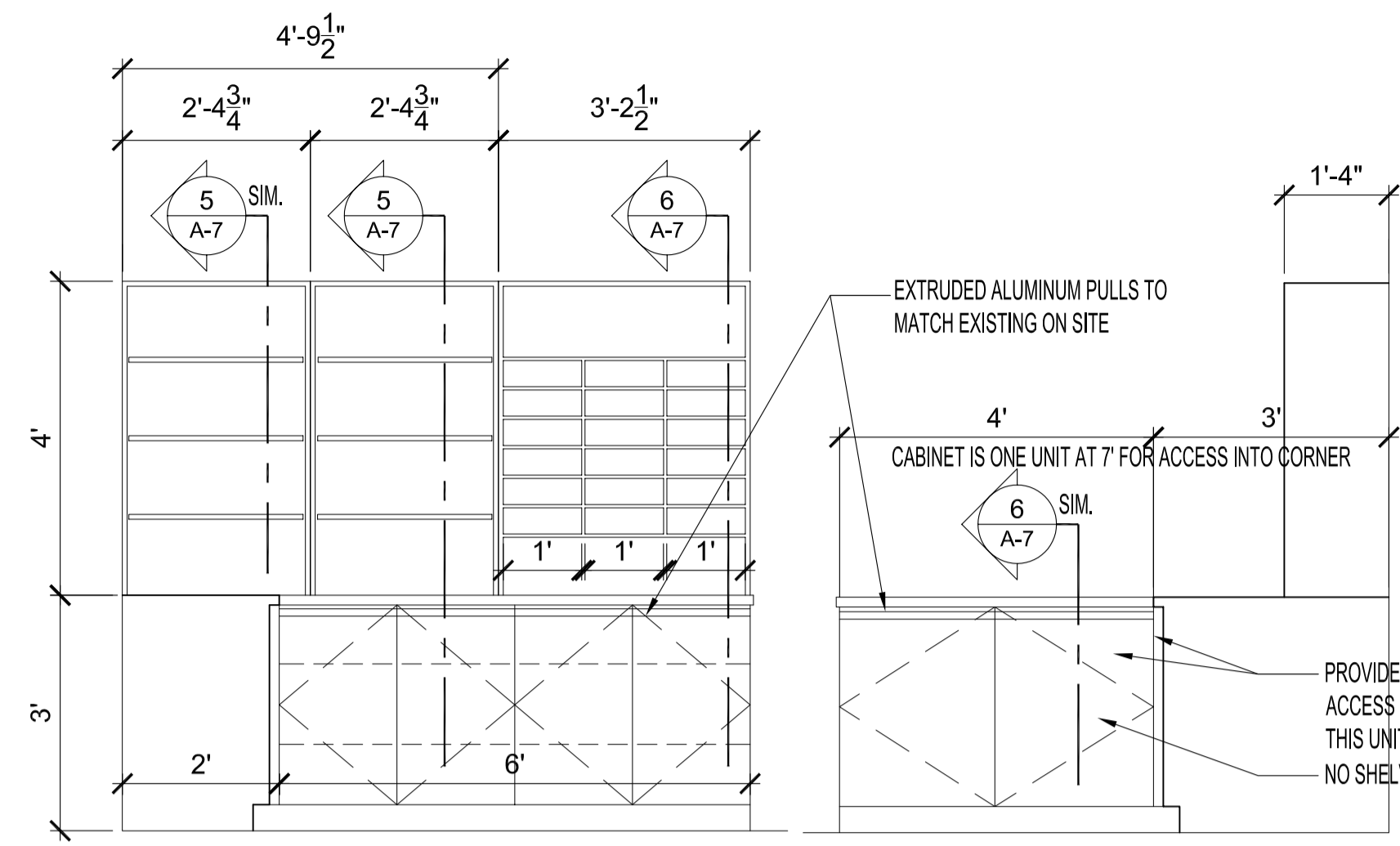
ELEVATION A - SHELF & SINK
WASHROOM 209
SCALE: 1/4" = 1'-0"



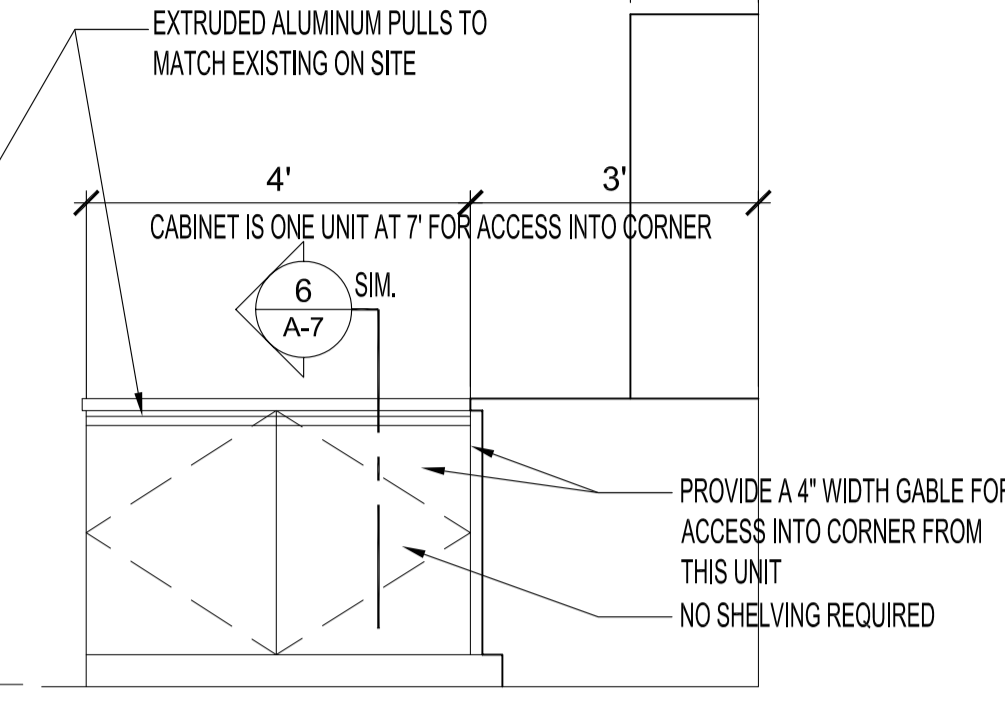
ELEVATION B - COUNTER UNIT
IT LAB 226
SCALE: 1/4" = 1'-0"



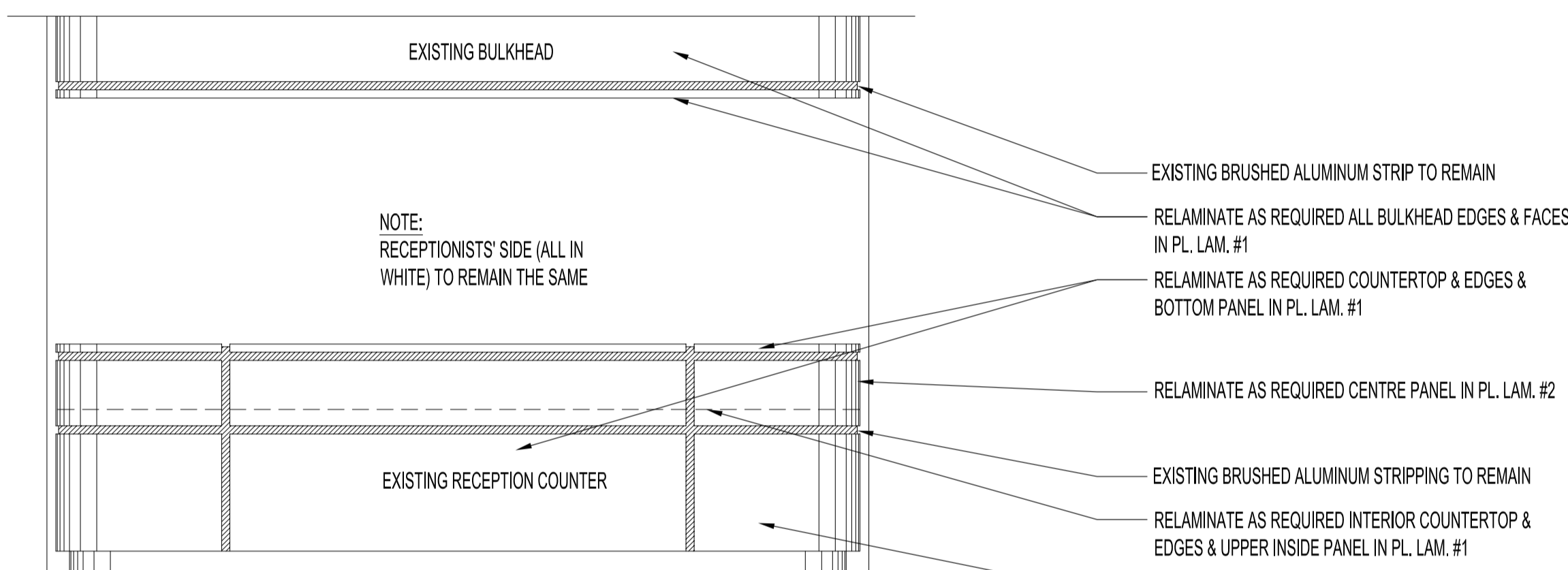
ELEVATION C - COUNTER & SINK
MEETING ROOM 202
SCALE: 1/4" = 1'-0"



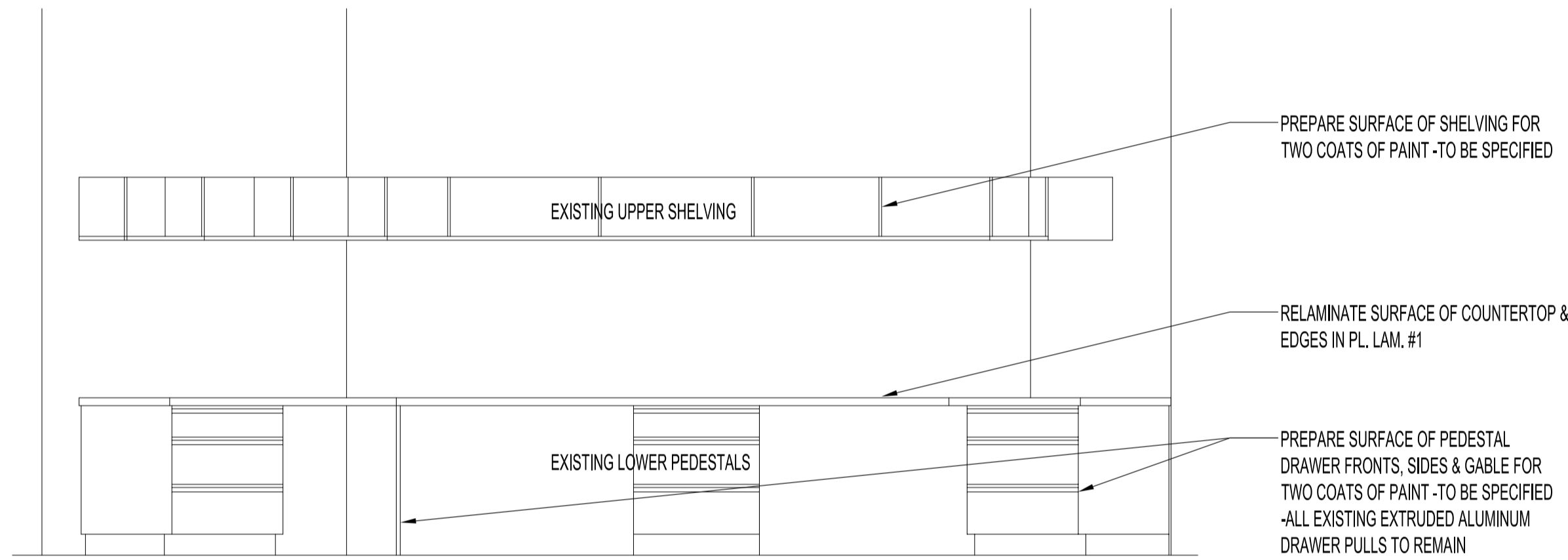
ELEVATION D - COUNTER & MAIL SORTER
COPY ROOM 203
SCALE: 1/4" = 1'-0"



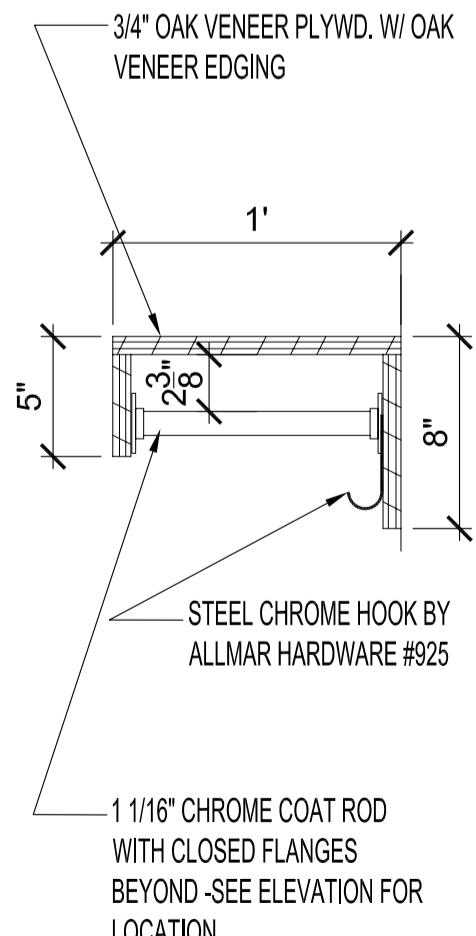
ELEVATION E - COUNTER & MAIL SORTER
COPY ROOM 203
SCALE: 1/4" = 1'-0"



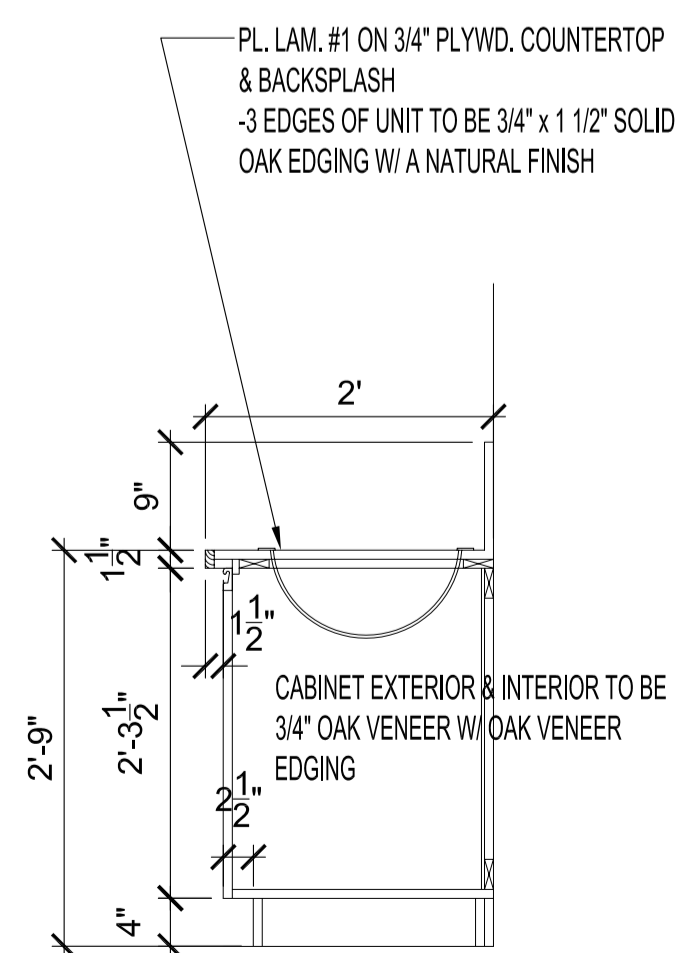
ELEVATION F - EXISTING RECEPTION COUNTER
RECEPTION 201
SCALE: 1/4" = 1'-0"



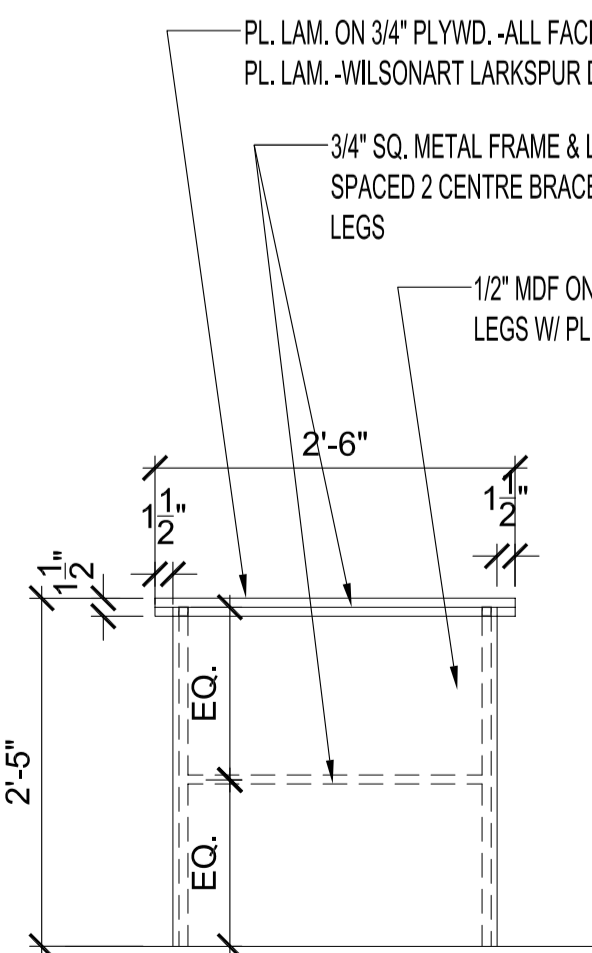
ELEVATION G - EXISTING COMPUTER COUNTER & SHELVING
GENERAL OFFICE 217
SCALE: 1/4" = 1'-0"



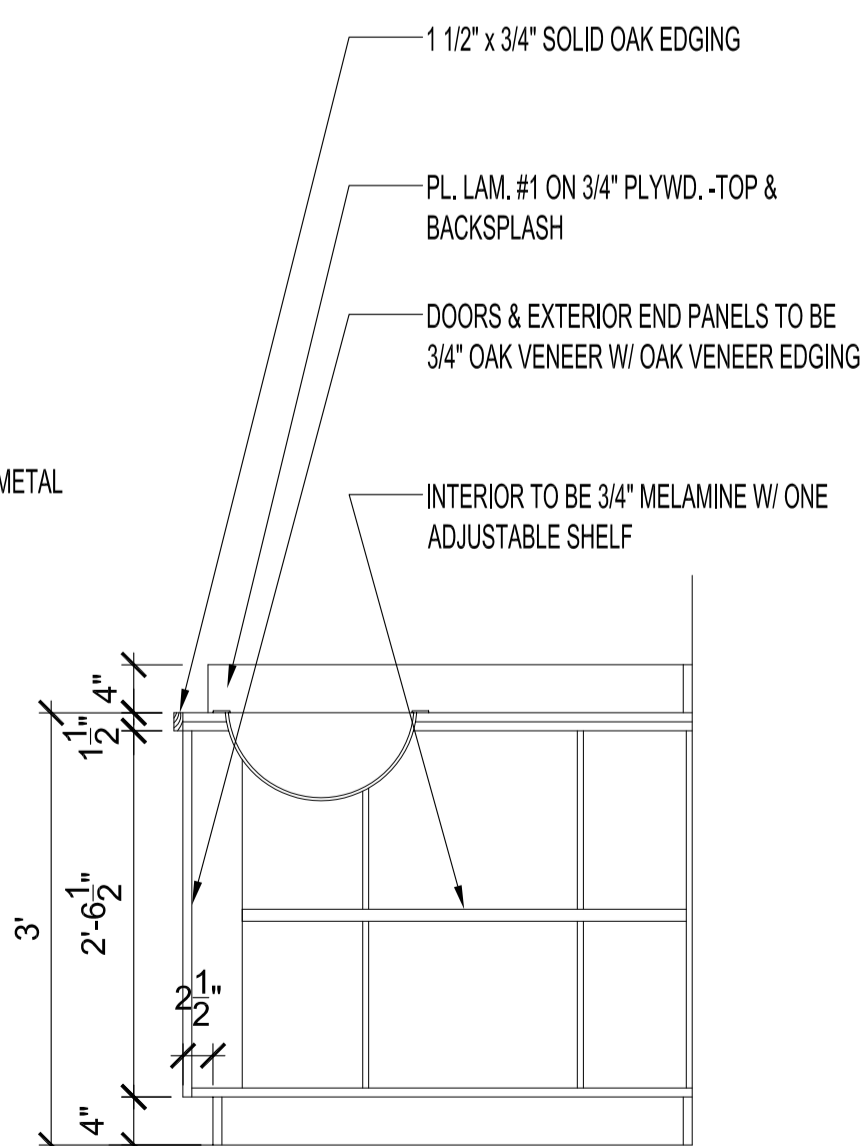
1 DETAIL - SHELF
SCALE: 3/4" = 1'-0"



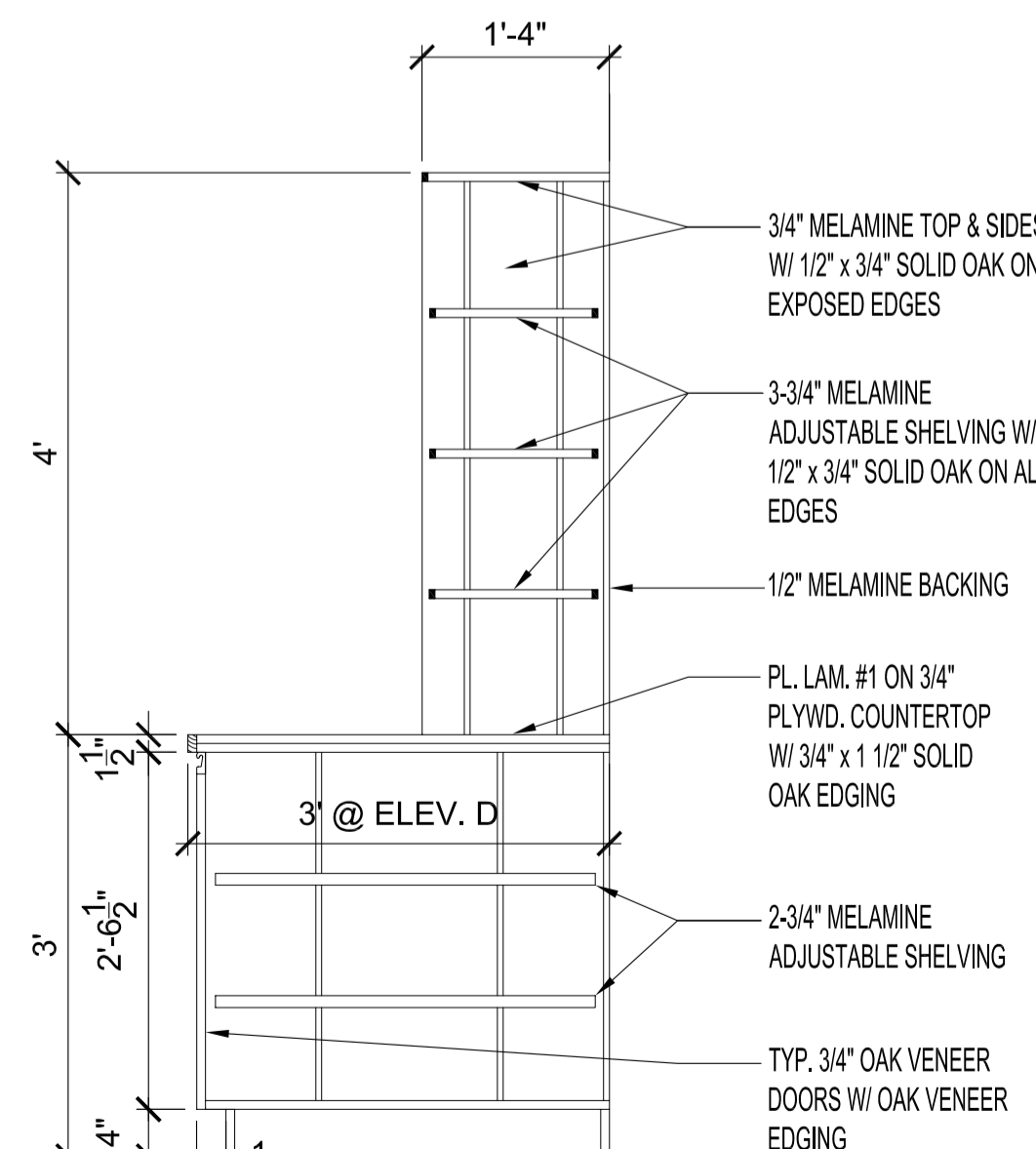
2 DETAIL - WSHRM SINK
SCALE: 3/4" = 1'-0"



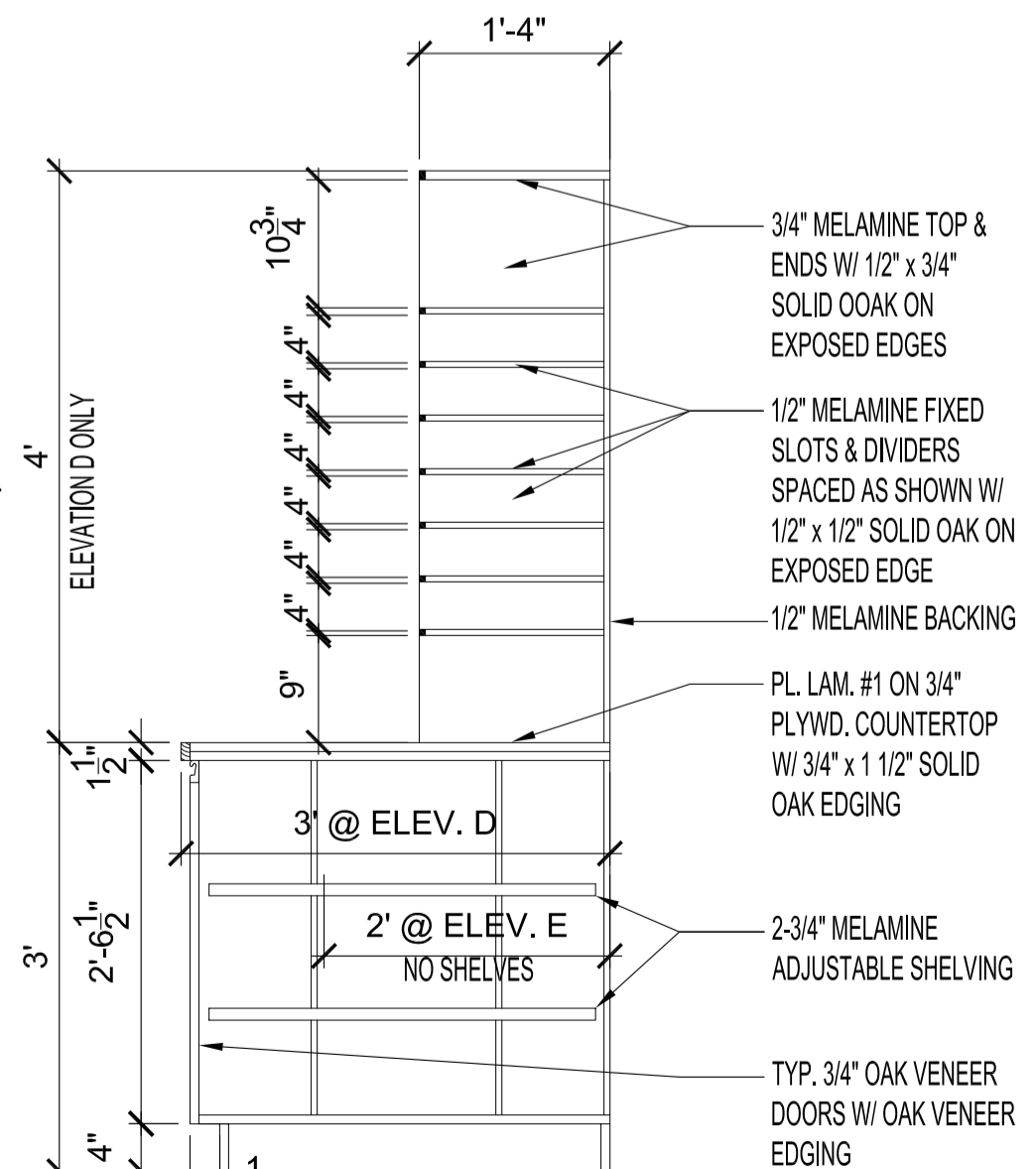
3 DETAIL - COUNTER
SCALE: 3/4" = 1'-0"



4 DETAIL - SINK CABINET
SCALE: 3/4" = 1'-0"



5 DETAIL - COUNTER & SHELVING
SCALE: 3/4" = 1'-0"



6 DETAIL - COUNTER & MAIL SLOTS
SCALE: 3/4" = 1'-0"

NOTES :

MATERIAL NOTES

1. STANDARDS OF MATERIAL AND QUALITY OF CONSTRUCTION TO MEET AVMAC STANDARDS.

2. PROVIDE SHOP DRAWINGS.

WASHROOM 209

-NEW MIRROR TO BE BOBRICK B-397 RECESSED MEDICINE CABINET

-NEW TOWEL DISPENSER TO BE BOBRICK B-369 CLASSIC SERIES

-NEW TOILET TISSUE DISPENSER TO BE BOBRICK B-667

-NEW SOAP DISPENSER TO BE BOBRICK B-40

MEETING ROOM 202 & COPY ROOM 203

-HINGES TO BE BLUM MODEL 90 91A653 SELF CLOSING 170 DEGREES

-DOOR PULLS TO BE OAK FLUSH BY RICHELIEU #05464 (MEETING RM 202 ONLY)

-RECESSED ADJ. SHELVING STANDARDS & CLIPS TO BE K&V 255 & 256

FINISHES

1. ALL INTERIOR & EXTERIOR MELAMINE TO BE OFF WHITE UNLESS NOTED OTHERWISE.

2. ALL SOLID & VENEER OAK TO HAVE A NATURAL FINISH TO MATCH EXISTING ON SITE.

PLASTIC LAMINATE FINISHES

PL. LAM. #1 -FORMICA #3512-58-"METAL EARTH" MATTE FINISH

PL. LAM. #2 -FORMICA #7812-58-"MDF SOLIDZ" MATTE FINISH

PL. LAM. #3 -WILSONSART #D328-60 "LARKSPUR"

ORIGINAL SEALED BY:
R.K. FOK LI Arch.
Date: 2004/10/13

NO.	REVISION/DESCRIPTION	BY	DATE
SEALS			

DRAWN BY MMK CHECKED BY APPROVED
DATE 2004.10.13 USER APPROVAL

CITY OF WINNIPEG
PLANNING, PROPERTY &
DEVELOPMENT DEPARTMENT
CIVIC ACCOMMODATIONS DIVISION
300 - 65 GARRY ST. R3C 4K4

PROJECT
Fire Paramedic Services
Executive Office Renovation
185 KING STREET -MANDARIN BLDG. -SECOND FLOOR

SHEET TITLE
Millwork Details
SCALE Noted PROJECT NO. 2004-060 SHEET NO. A-7