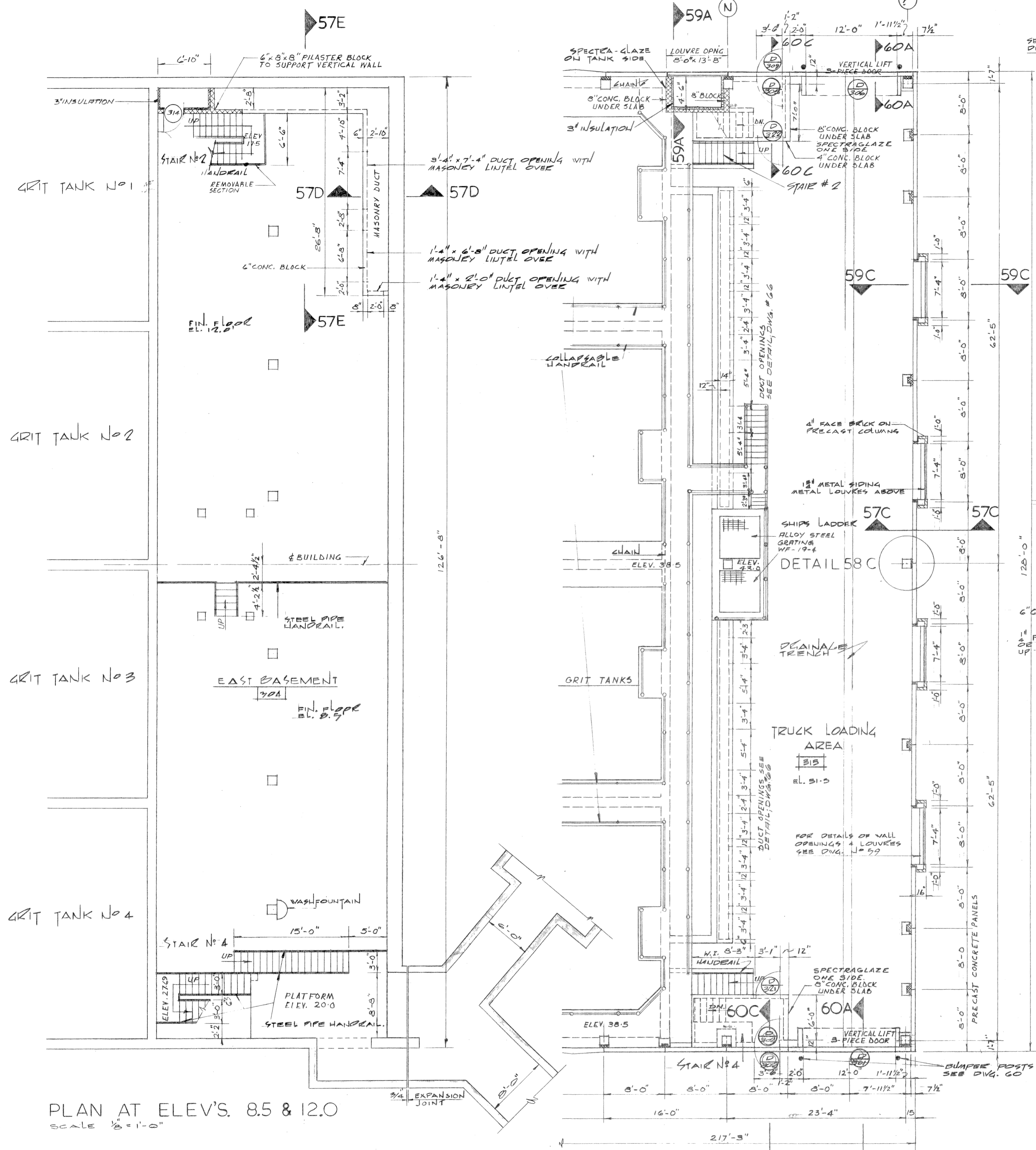
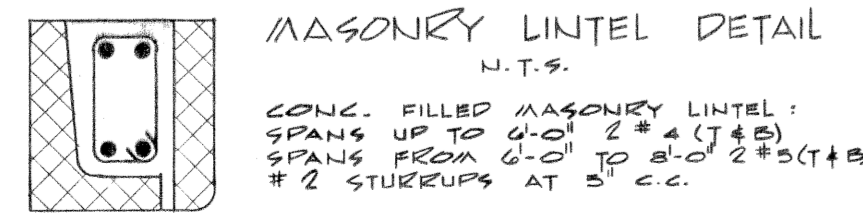


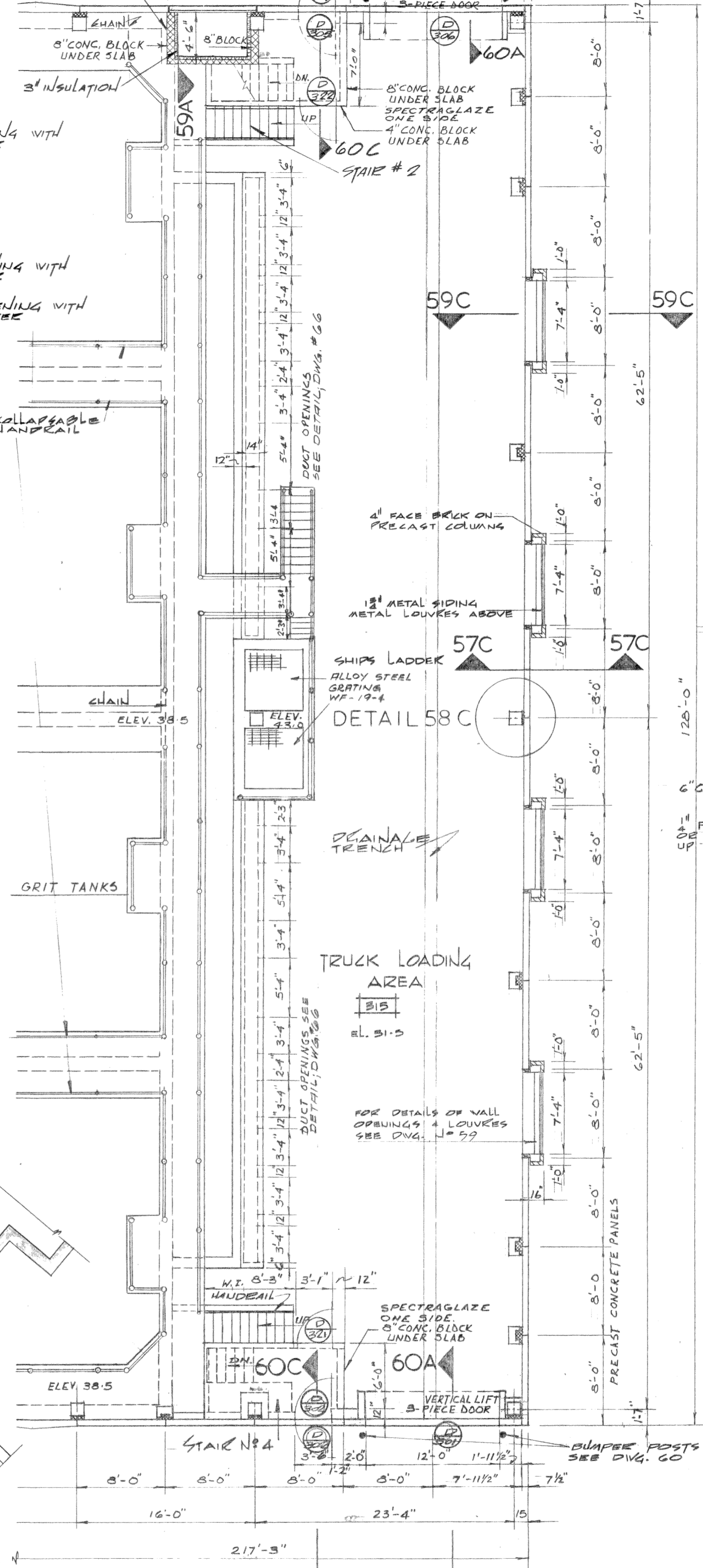
MICROFILMED



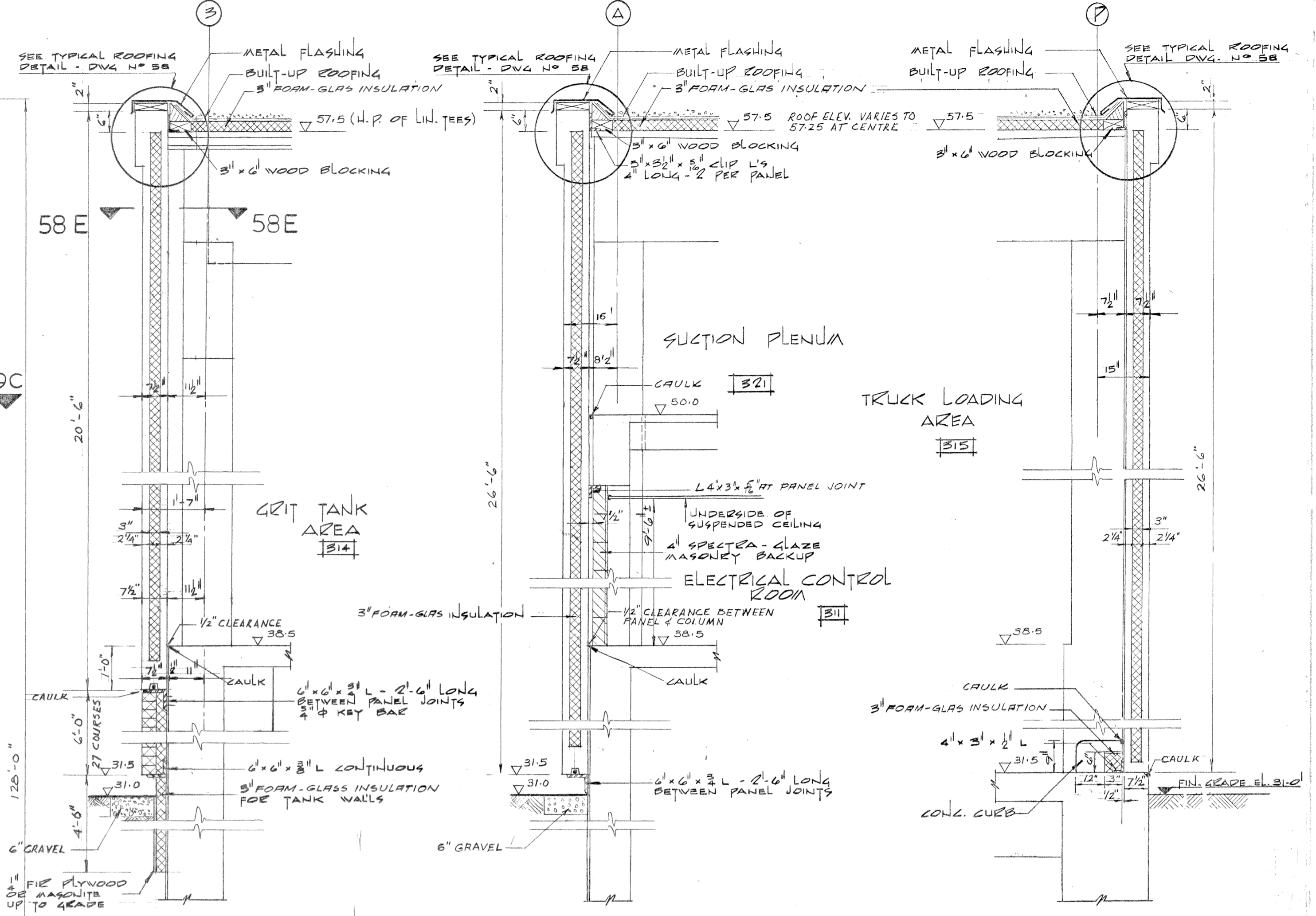
PLAN AT ELEV'S. 8.5 & 12.0
SCALE 1/2" = 1'-0"



MASONRY LINTEL DETAIL
N.T.S.
CONC. FILLED MASONRY LINTEL:
SPANS UP TO 6'-0" (2" x 4" (1+1))
SPANS FROM 6'-0" TO 8'-0" (2" x 5" (1+1))
#2 STIRRUPS AT 5" C.C.



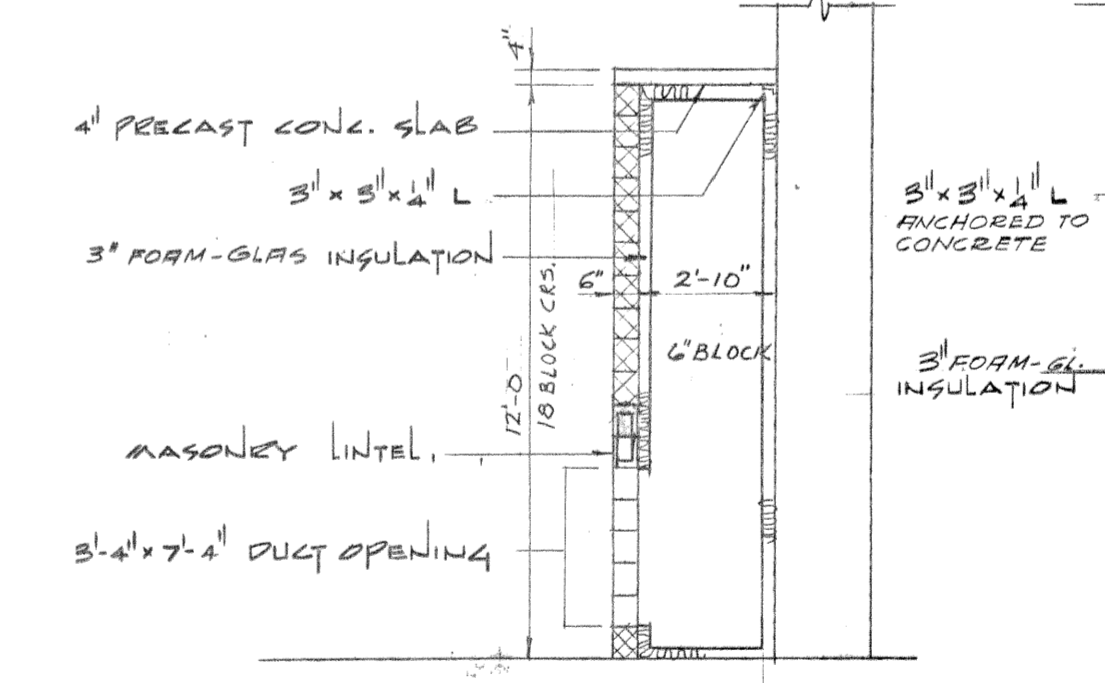
PLAN AT ELEV. 31.5
SCALE 1/8" = 1'-0"



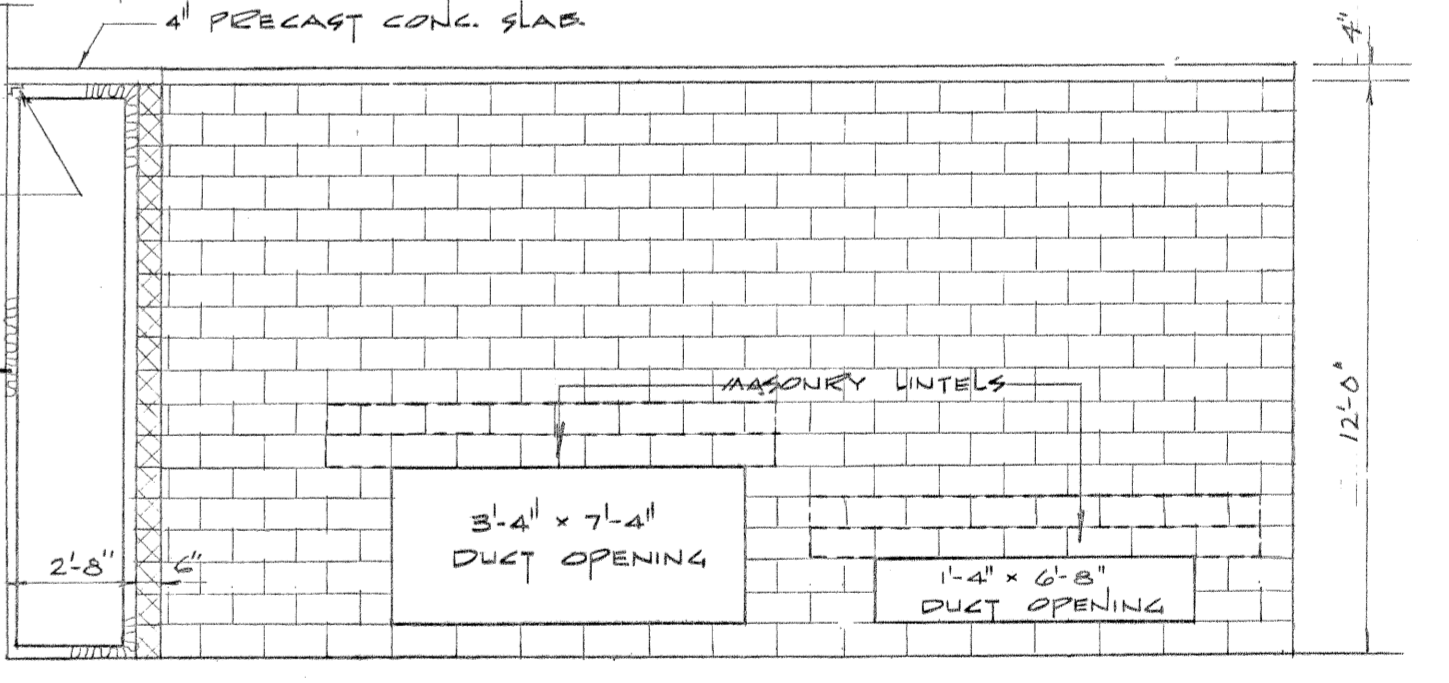
WALL SECTION 57A
SCALE 1/2" = 1'-0"

WALL SECTION 57B
SCALE 1/2" = 1'-0"

WALL SECTION 57C
SCALE 1/2" = 1'-0"

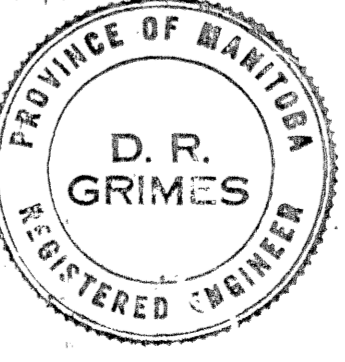


DETAIL SECTION 57D
SCALE 1/4" = 1'-0"



DETAIL SECTION 57E
SCALE 1/4" = 1'-0"

REVISIONS		
No.	DATE	DETAIL



THE METROPOLITAN CORPORATION OF GREATER WINNIPEG
WATERWORKS AND WASTE DISPOSAL DIVISION

NORTH END SEWAGE TREATMENT PLANT

CONTRACT A-GRIT REMOVAL BUILDING

SUPERSTRUCTURE

FLOOR PLANS, SECTIONS & DETAILS

APPROVED: *J. W. MacLaren*
JAMES F. MACLAREN LIMITED ENGINEERS TORONTO

APPROVED: *D. R. Grimes*
D. R. GRIMES ENGINEERING CONSULTANTS WINNIPEG

DATE: MARCH 11, 1963
SCALE: AS SHOWN
DWG. No. 57 OF 217

NEP-57

FOR ACTUAL ELEV. SUBTRACT 0.37 F.T. **AS BUILT**

AUG 1966

FILE # NR10267

FILE 575-D-4595

NEP-0057