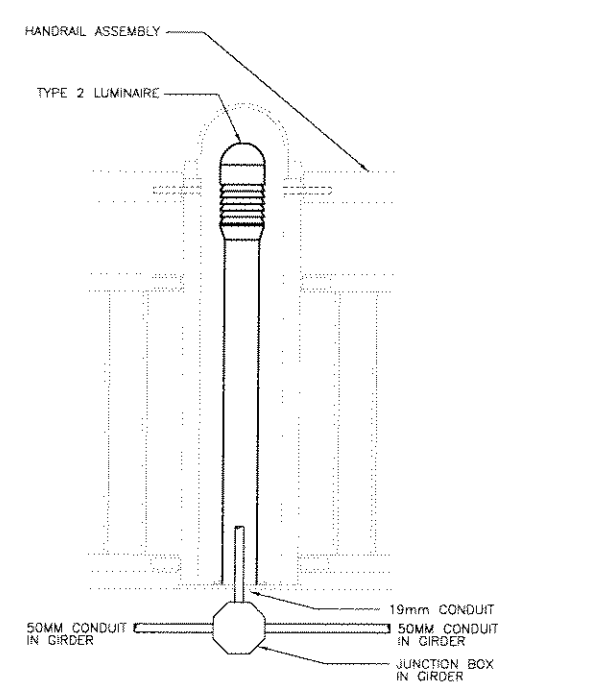


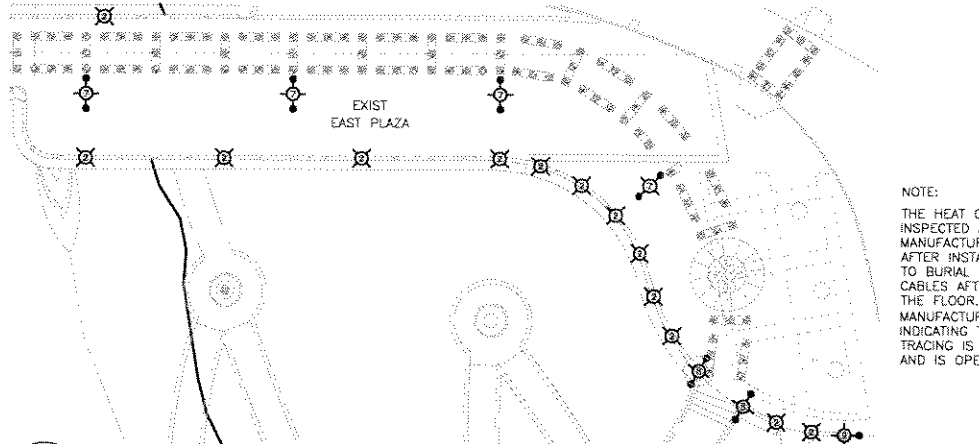
**ELECTRICAL LEGEND**

- SURFACE MOUNTED INCANDESCENT OR H.I.D. LUMINAIRE TYPE X (SEE LUMINAIRE SCHEDULE)
- CIRCUIT NUMBER (TO BE SWITCHED)
- PANELBOARD DESIGNATION
- 120V, 15A DUPLEX RECEPTACLE
- SINGLE POLE SWITCH

- NOTES
1. CONTRACTOR TO VERIFY SERVICE ENTRANCE COMPLIES WITH HYDRO UTILITY REQUIREMENTS.
  2. WARNING SIGN, TO BE PROVIDED AT EACH ENTRY POINT TO POTENTIAL FLOOD AREA, SHALL STATE "IF FLOODING HAS OCCURRED, A QUALIFIED ELECTRICIAN MUST BE CALLED TO INSPECT ELECTRICAL EQUIPMENT."
  3. CONTRACTOR TO USE TECK CABLE AND WATER-TITE CONNECTORS IN "POTENTIAL FLOOD AREA."
  4. PROVIDE AND INSTALL WEATHER PROOF JUNCTION BOXES, (NEMA 4X RATED OR APPROVED EQUAL), WITH ALL NECESSARY WIRING FOR CONNECTION OF THE NAVIGATIONAL LIGHTS (TYPICAL FOR 2 LOCATIONS).
  5. AT WEST ABUTMENT ALLOW FOR ELECTRICAL CONDUIT EXPANSION AT LOCATION OF STRUCTURAL EXPANSION JOINTS.
  6. REFER TO DRAWING 604 FOR EXACT LOCATION OF NAVIGATIONAL LIGHTS AND MOUNTING DETAILS.
  7. REFER TO DETAIL ON THIS DRAWING FOR CENTRAL PLAZA IN-FLOOR ELECTRIC HEATING. REFER TO DRAWING 605 FOR PYLON ELECTRICAL.

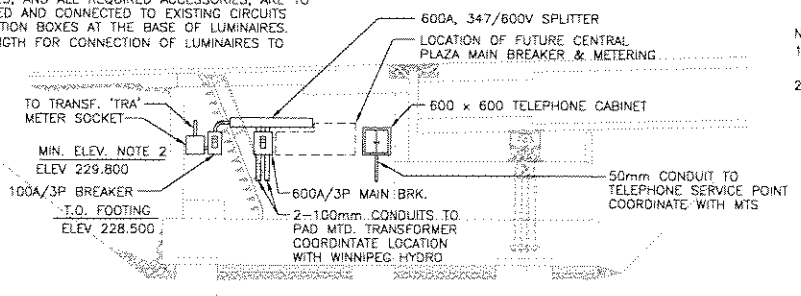


**3 TYPE 2 LUMINAIRE MOUNTING DETAIL**  
1 : 10



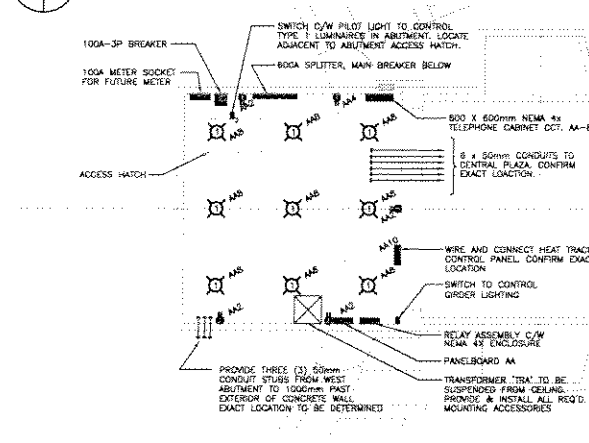
**8 EAST PLAZA PEDESTRIAN LIGHTING DETAIL**  
1 : 250

- NOTES:
1. LUMINAIRES C/W LAMPS, POLES, AND ALL REQUIRED ACCESSORIES, ARE TO BE SUPPLIED, INSTALLED, WIRED AND CONNECTED TO EXISTING CIRCUITS TERMINATED IN EXISTING JUNCTION BOXES AT THE BASE OF LUMINAIRES.
  2. PROVIDE SUFFICIENT LEAD LENGTH FOR CONNECTION OF LUMINAIRES TO EXISTING CIRCUITS.



- NOTES
1. COORDINATE EXACT LOCATION OF ALL ELECTRICAL EQUIPMENT IN WEST ABUTMENT WITH OTHER TRADES AND CONTRACT ADMINISTRATOR PRIOR TO ROUGH-IN.
  2. MINIMUM HEIGHT TO U/S OF DISTRIBUTION AND COMMUNICATIONS EQUIPMENT.

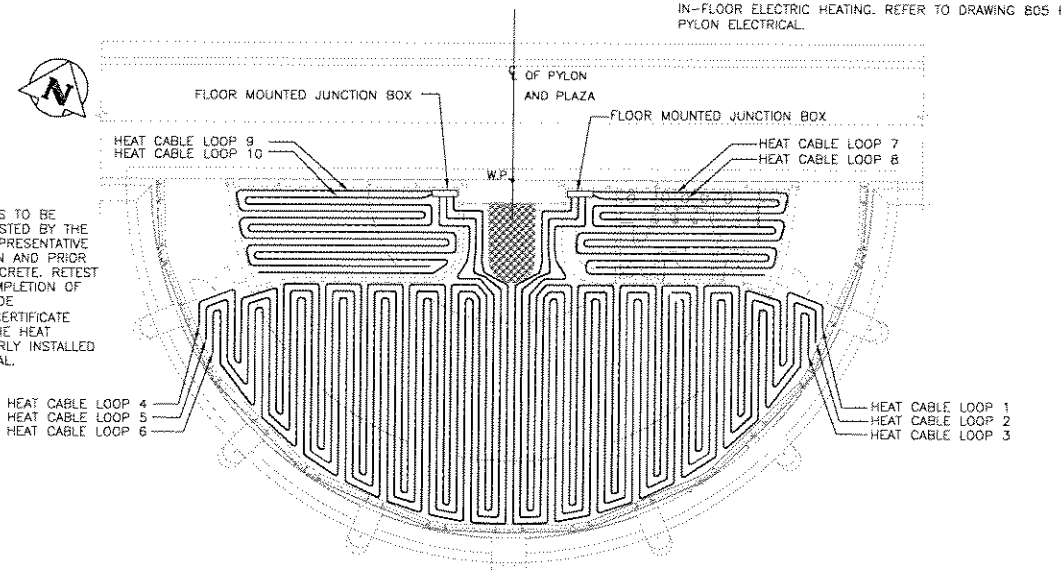
**6 WEST ABUTMENT - NORTH WALL EQUIPMENT ARRANGEMENT DETAIL**  
1 : 75



**2 WEST ABUTMENT ELECTRICAL LAYOUT EQUIPMENT ARRANGEMENT DETAIL**  
1 : 75



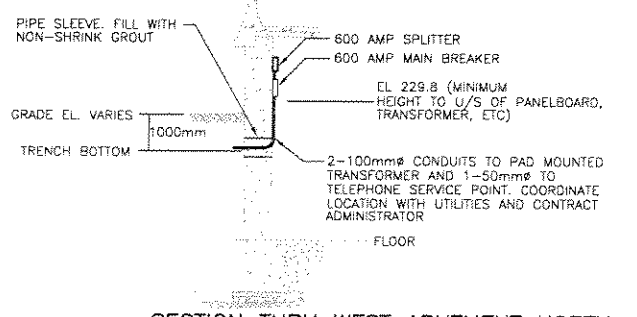
**7 TELEPHONE SYSTEM RISER DIAGRAM**  
N.T.S.



- NOTE:
- THE HEAT CABLE IS TO BE INSPECTED AND TESTED BY THE MANUFACTURER REPRESENTATIVE AFTER INSTALLATION AND PRIOR TO BURIAL IN CONCRETE. RE-TEST CABLES AFTER COMPLETION OF THE FLOOR. PROVIDE MANUFACTURER'S CERTIFICATE INDICATING THAT THE HEAT TRACING IS PROPERLY INSTALLED AND IS OPERATIONAL.

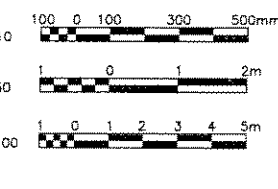
- NOTES:
1. HEATING CABLE IS TO BE INSTALLED IN CONCRETE AS PER MANUFACTURER'S RECOMMENDATIONS. LOCATE CABLES 305mm O/C. ADJUST LAYOUT AS NECESSARY TO SUIT SITE CONDITIONS. TERMINATE CABLES IN A SURFACE MOUNTED JUNCTION BOX AS SHOWN.
  2. HEATING CABLE SHALL BE MI, DUAL CONDUCTOR, 347V, PYROTEX D/ 62 HE4440/LENGTH AS SHOWN/6652/347/7/10V/Y C/W FACTORY INSTALLED TERMINATIONS, 2100mm LONG COLD LEADS AND ALL REQUIRED ACCESSORIES.

**4 PLAZA IN FLOOR HEATING INSTALLATION LAYOUT**  
1 : 150



**5 SECTION THRU WEST ABUTMENT NORTH WALL AT ELECTRICAL DISTRIBUTION**  
1 : 100

**RECORD DRAWING**  
DATE 04.11.29 BY G.I.  
REVIEWED BY \_\_\_\_\_



B.M. ELEV.	F.B.	<b>WARDROP</b> Engineering Inc.	DESIGNED BY L.K. CHECKED BY L.K. DRAWN BY M.F.P. / A.A.A. APPROVED BY R.v.G. H.R. SCALE: AS NOTED VERTICAL: AS NOTED DATE 02.05.06	ORIGINAL DRAWING REVISION "0" SEALED BY L. KORENBAUM 02.05.06
2 RECORD DRAWING 04.11.29				CONSULTANT DRAWING NO. 010007-13-01
1 ISSUED FOR CONSTRUCTION 02.07.29 D.S.A.		ACCEPTED BY B. EBENSPANGER (02.05.06)	DATE 02.05.06	
0 ISSUED FOR TENDER 02.05.06 R.H.W.				
NO. REVISIONS				

**APEGM**  
Certificate of Authorization  
No. 195  
Expires APRIL 30, 2003  
L. KORENBAUM  
signature  
02.05.06  
date

**THE CITY OF WINNIPEG**  
PUBLIC WORKS DEPARTMENT  
ENGINEERING DIVISION

**PROVENCHER PAIRED BRIDGES PROJECT**  
PEDESTRIAN BRIDGE

CITY DRAWING NUMBER B231-02-089  
SHEET OF

**BRIDGE LIGHTING AND PLAZA HEATING**

804