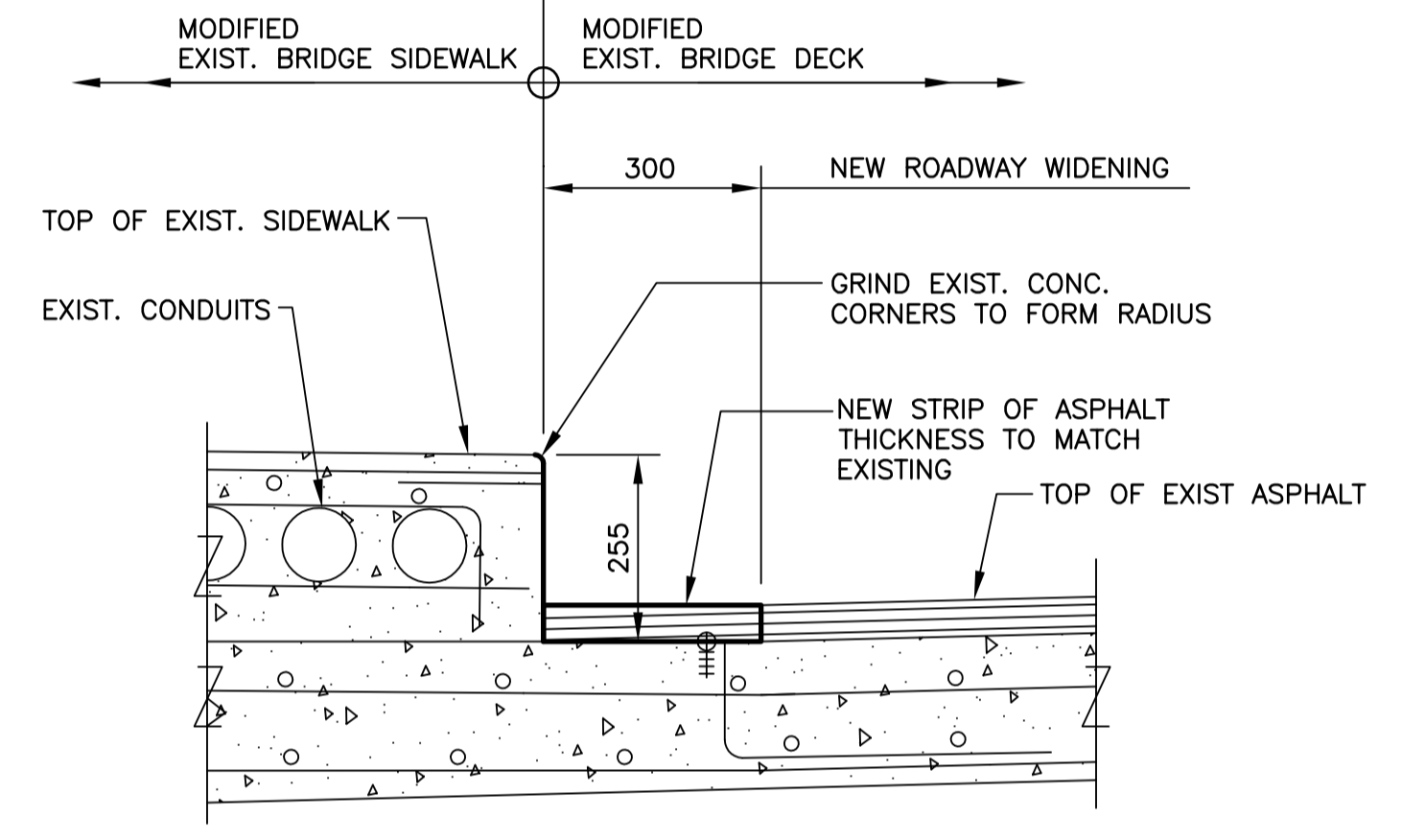
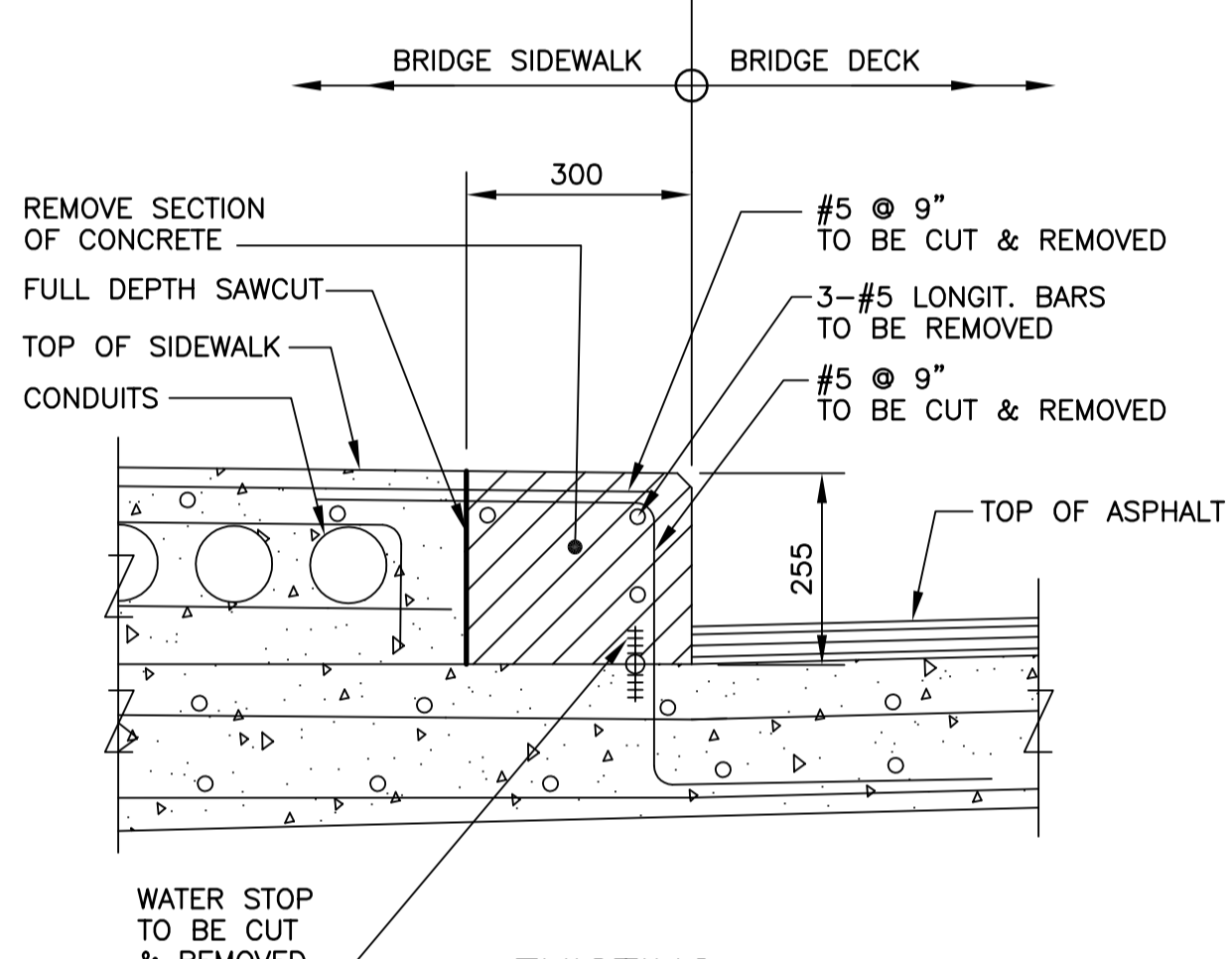
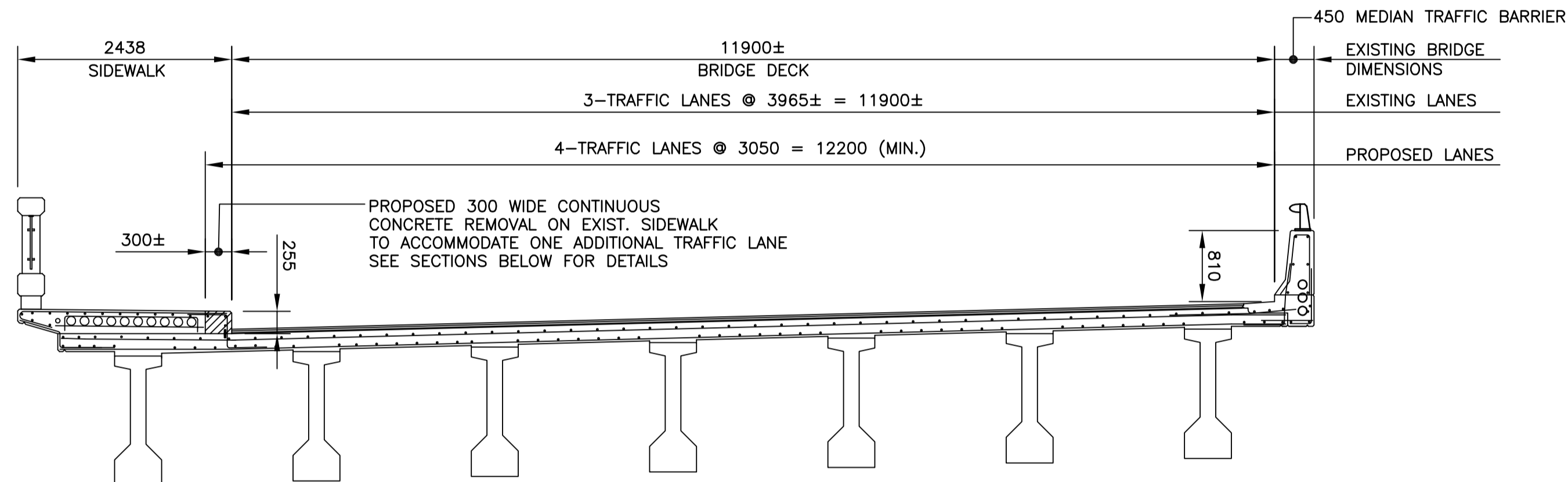
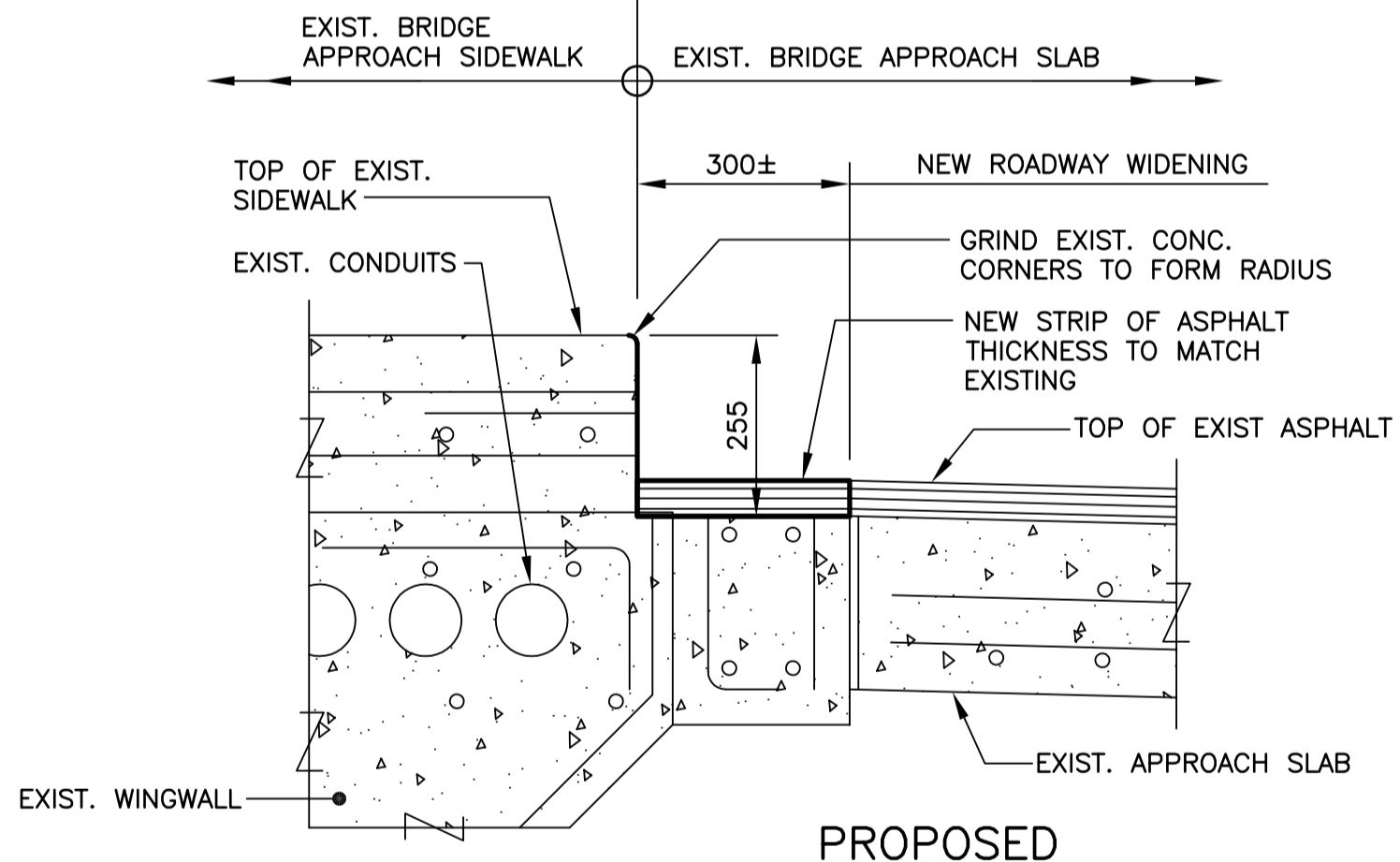
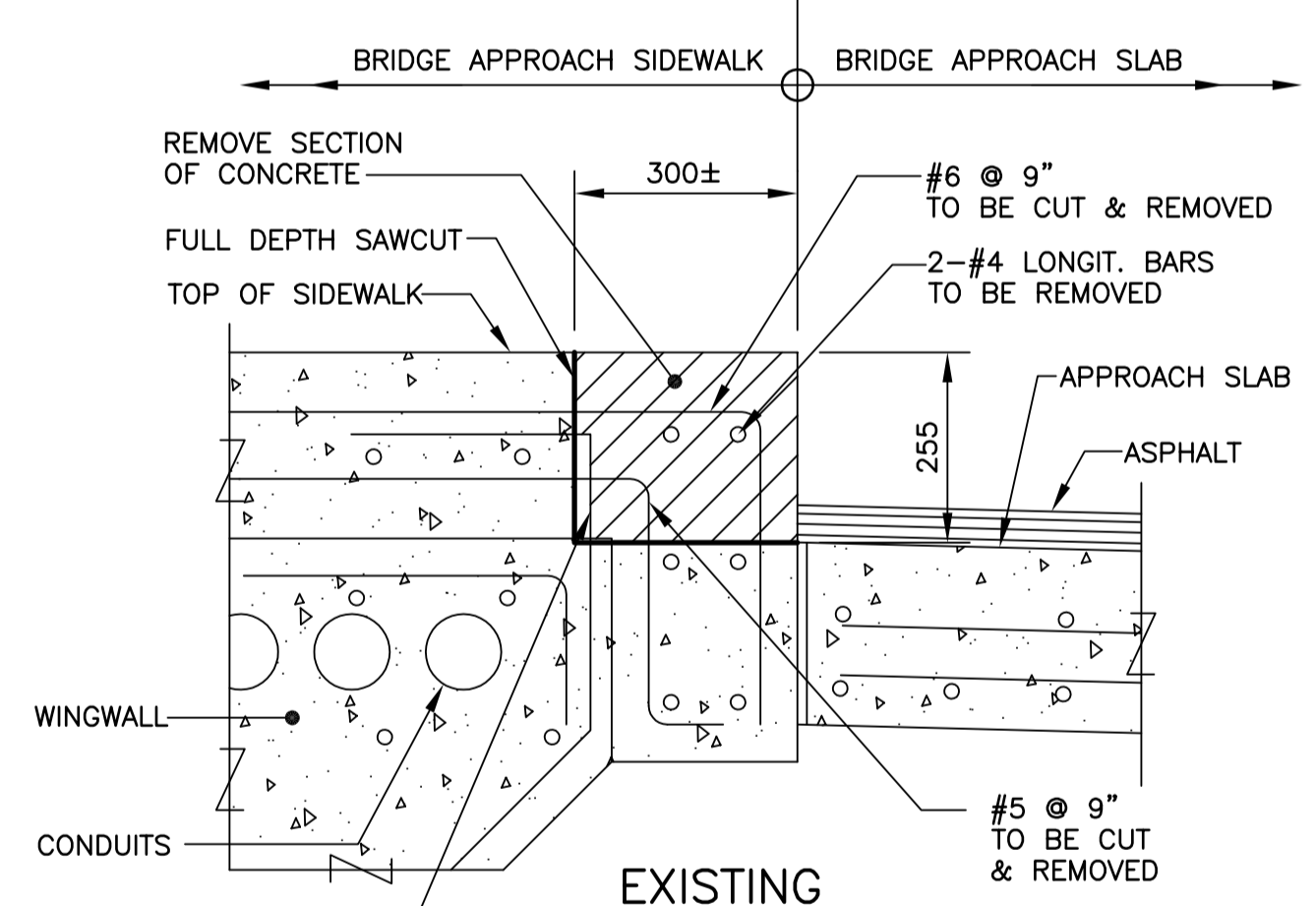


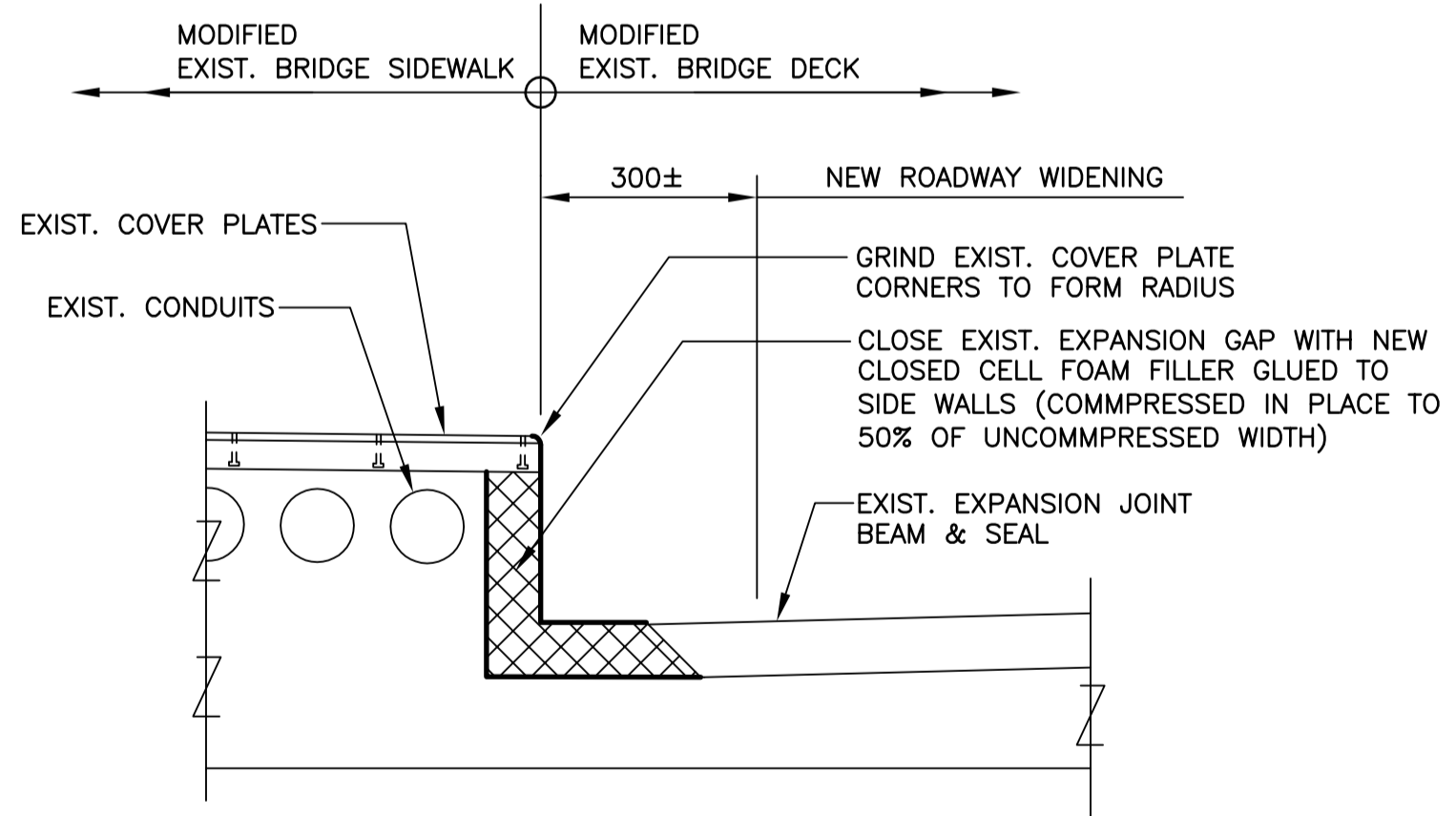
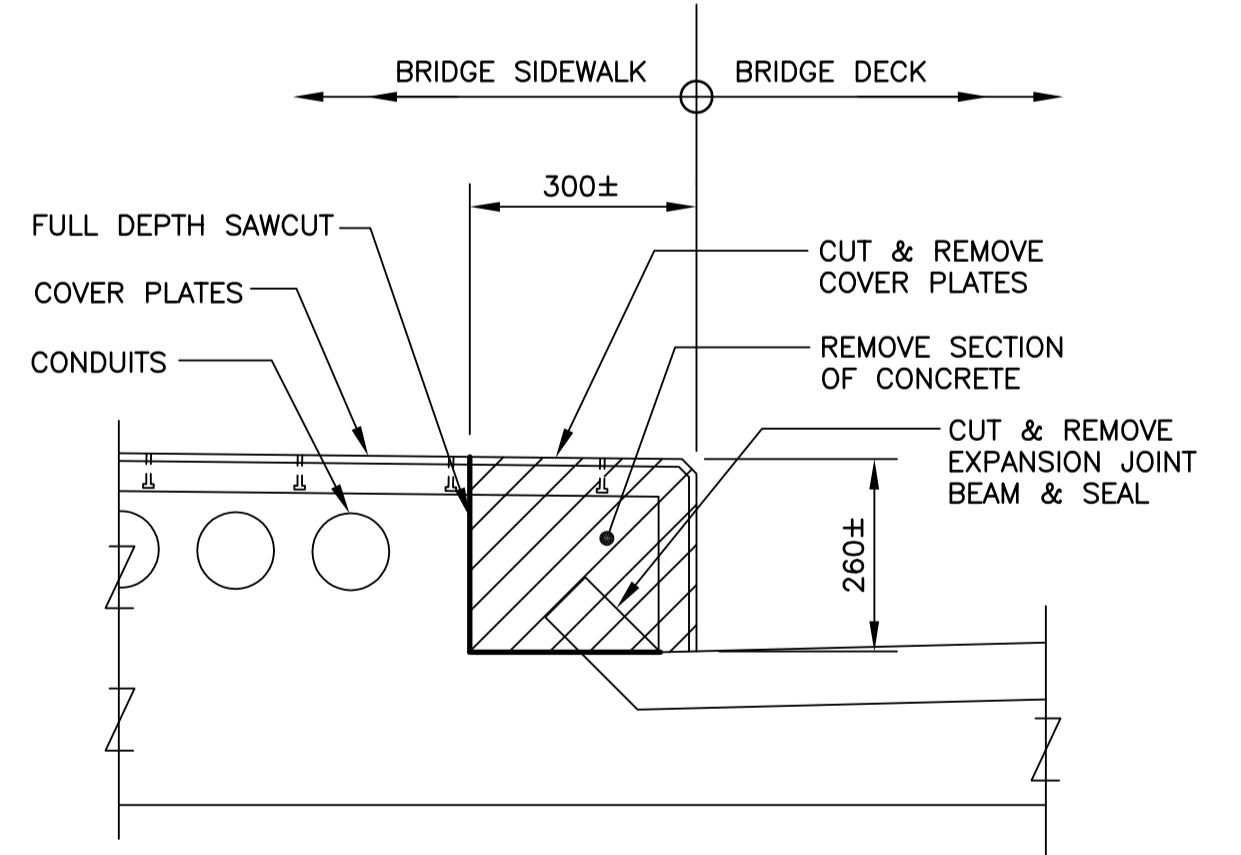
**NOTE:**  
THE CONTRACTOR SHALL HAVE M.T.S. LOCATE THEIR CABLES/CONDUITS LOCATED IN THE SIDEWALK OF THE BRIDGE PRIOR TO REMOVALS



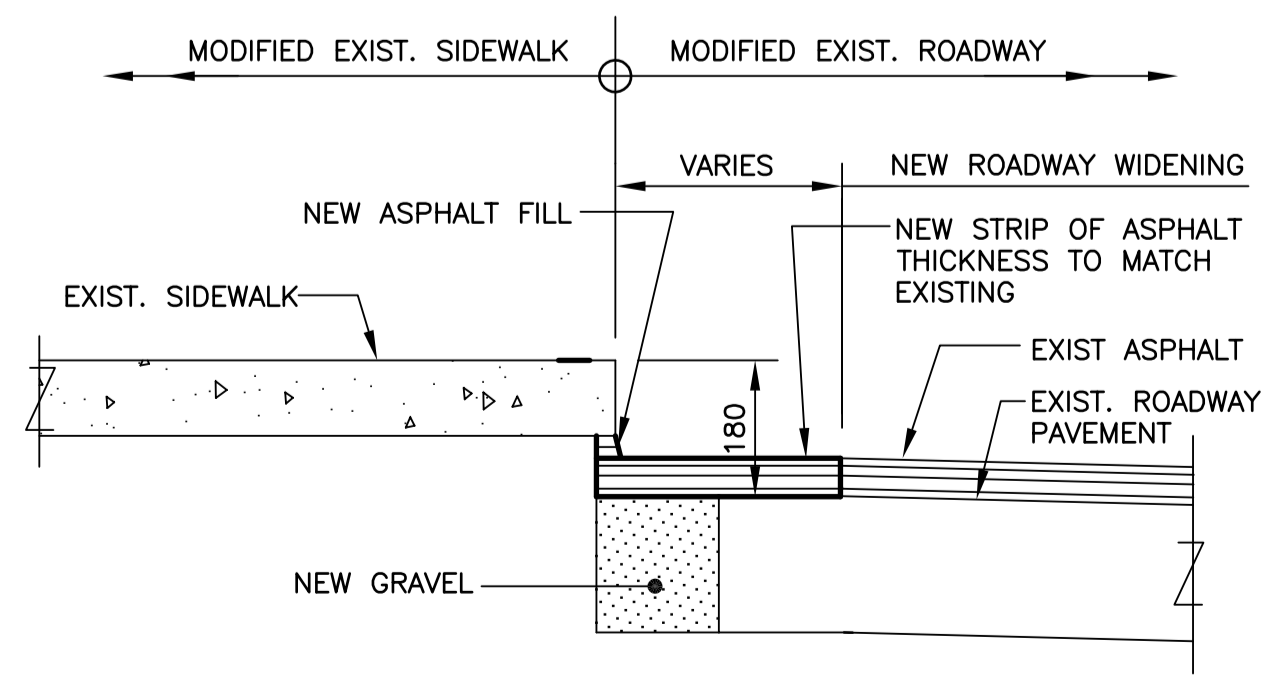
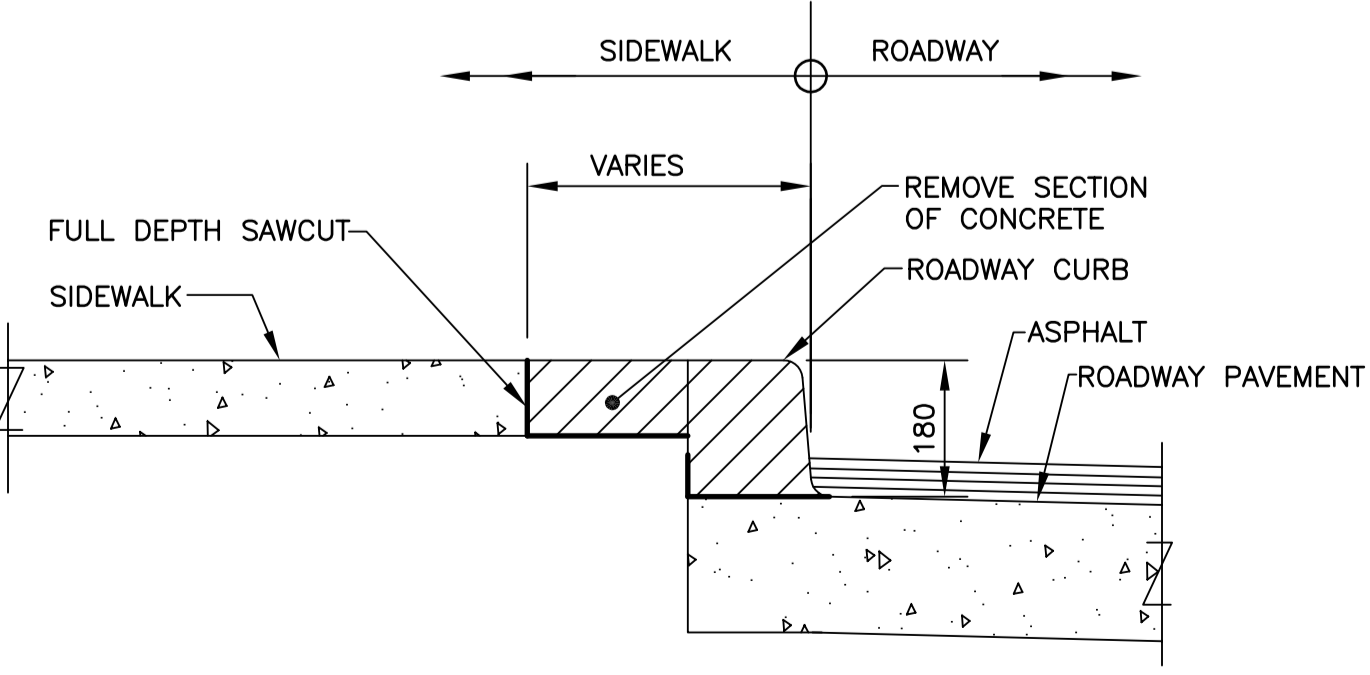
**BRIDGE SIDEWALK SLAB PARTIAL REMOVAL**  
1: 10



**BRIDGE APPROACH SIDEWALK SLAB PARTIAL REMOVAL**  
1: 10



**BRIDGE EXPANSION JOINT COVER PLATE PARTIAL REMOVAL**  
1: 10



**ROADWAY CURB REMOVAL**  
1: 10

B.M. ELEV.	DESIGNED BY RAW				CITY DRAWING NUMBER <b>B108-05-03</b> SHEET 03 OF 33
	DRAWN BY NBG / KC				
	CHECKED BY RAW				
	APPROVED BY				
	HOR. SCALE AS NOTED				
2 ISSUED FOR TENDER 01/31/05 NBG	VERTICAL	RELEASED FOR CONSTRUCTION	CONSULTANT PROJECT NO. 04-3021-2000	MARYLAND TWIN BRIDGES REHABILITATION PROJECT WEST BRIDGE REHABILITATION DETOUR WORKS EXISTING EAST BRIDGE ROADWAY WIDENING PLAN, SECTIONS AND DETAILS	
1 ISSUED FOR CITY REVIEW 12/17/04 RAW	DATE DEC. 2004	DATE			
NO. REVISIONS	DATE	BY			