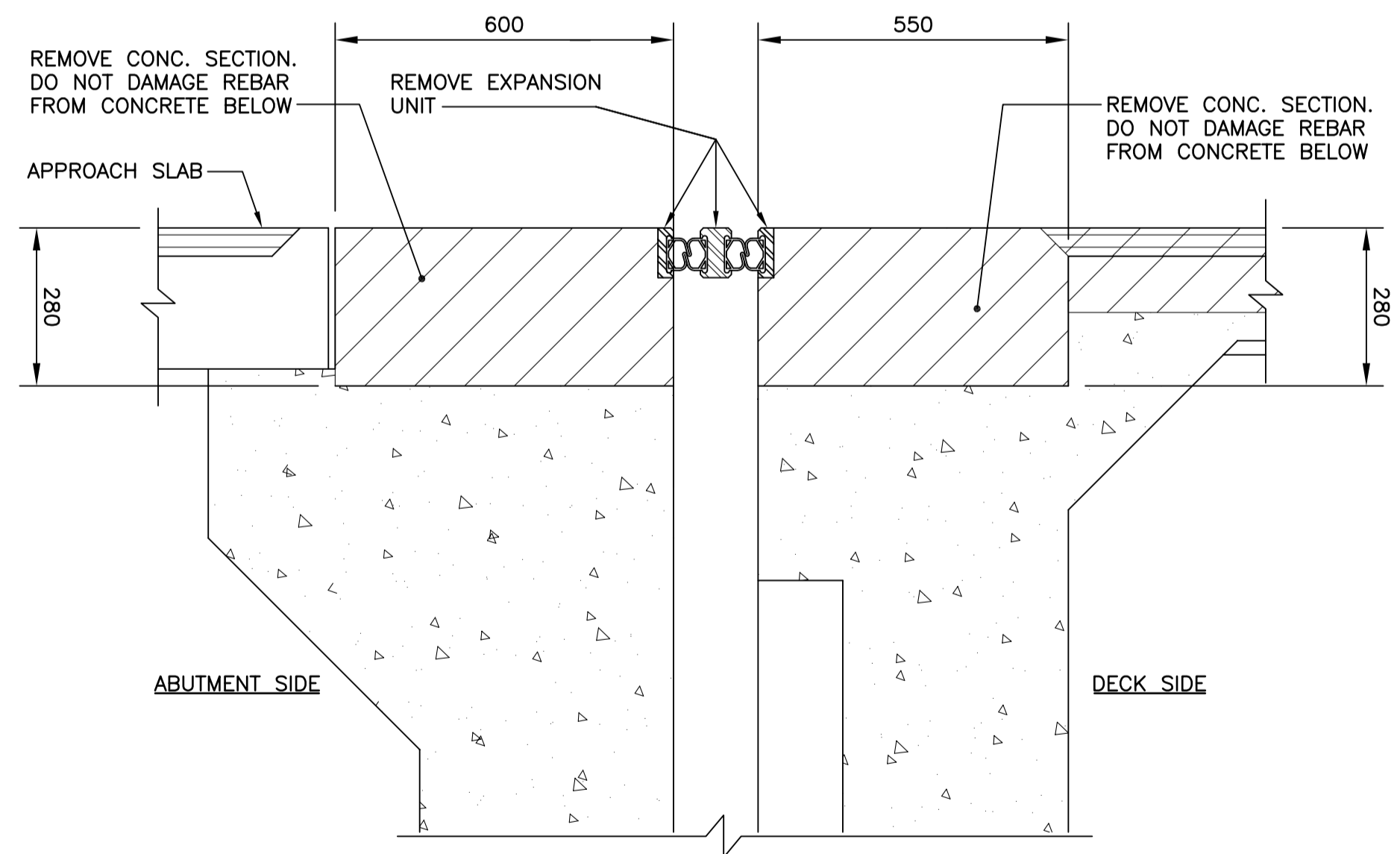
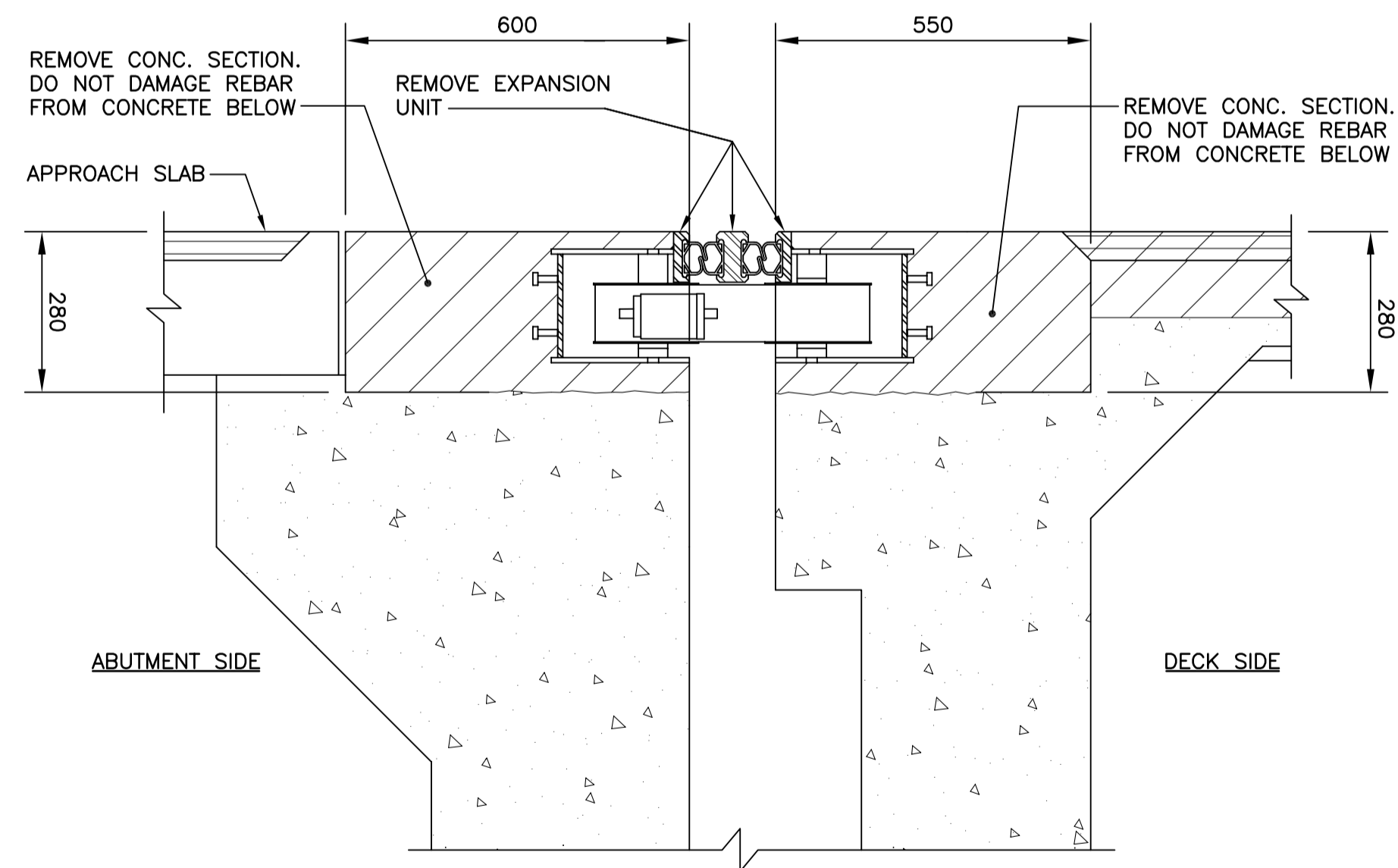


EXPANSION UNIT MK. W-1
1: 25




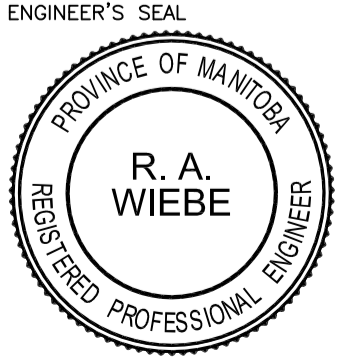
EXISTING REMOVAL SECTION 1
1: 10



EXISTING REMOVAL SECTION 2
1: 10

NOTES:

1. MANUFACTURER'S SHOP DRAWINGS SHALL BE SUBMITTED TO THE CONTRACT ADMINISTRATOR FOR APPROVAL AT LEAST FOURTEEN (14) WORKING DAYS PRIOR TO FABRICATION. THE EXPANSION JOINT ASSEMBLIES SHALL BE DESIGNED TO CARRY HSS 25 TRUCK AND HS 25 LANE LIVE LOADING.
2. STEEL SHALL BE IN ACCORDANCE WITH CSA STANDARD G40.21M GRADE 300 W OR EQUAL.
3. STEEL EXTRUSIONS SHALL BE IN ACCORDANCE WITH CSA STANDARD G40.21M GRADE 230 G MINIMUM.
4. ALL STEEL SURFACES, INCLUDING COVER PLATES SHALL BE HOT DIP GALVANIZED TO A NET RETENTION OF 600 g/m IN ACCORDANCE WITH CSA STANDARD G 164 AFTER FABRICATION AND INSTALLED IN ONE CONTINUOUS PIECE.
5. JOINT ASSEMBLY SHALL BE FABRICATED AND COMPLETELY SHOP ASSEMBLED AND PRESET TO DIMENSION "A" FOR 20°C PRIOR TO SHIPMENT.
6. WELDING SHALL BE LOW OXYGEN CLASSIFICATION. MANUAL ELECTRODES SHALL BE E7016 OR E7018. ALL WELDING SHALL BE IN ACCORDANCE WITH CSA STANDARD W59.
7. ROADWAY AND SIDEWALK EXPANSION JOINTS SHALL BE MODULAR ASSEMBLY SUPPLIED AND INSTALLED IN ONE CONTINUOUS PIECE (BOX SEAL).
8. SEAL SHALL BE PREFORMED NEOPRENE RUBBER. EACH SEAL SHALL BE SUPPLIED & INSTALLED IN ONE CONTINUOUS PIECE. NO SPLICE IN THE SEAL WILL BE PERMITTED.
9. ROADWAY/SIDEWALK EXPANSION JOINT ASSEMBLY SHALL BE INSTALLED 5mm BELOW ELEVATION AND GRADE OF ADJACENT BRIDGE DECK/SIDEWALK.
10. AFTER REMOVAL OF CLAMPING CHANNELS AND SPACER DAM, BOLT AND BLEEDER HOLES TO BE FILLED WITH AN APPROVED EPOXY GROUT.
11. INSTALLATION TEMPERATURE SHALL BE TAKEN AS THE MEAN SHADE AIR TEMPERATURE AND BE FOR A PERIOD OF 48 HOURS PRIOR TO JOINT INSTALLATION.
12. ALL AREAS OF DAMAGED GALVANIZING SHALL BE REPAIRED BY USING THE GALVALOY PROCEDURE AS SPECIFIED.
13. ALL BARRIER COVER PLATES SHALL BE RECESSED 20mm FROM THE FACE OF THE CONCRETE.

B.M. ELEV. 	DESIGNED BY: R.A.W. DRAWN BY: N.B.G. / K.C. CHECKED BY: R.A.W. APPROVED BY: HOR. SCALE: AS NOTED VERTICAL: DATE: DEC. 2004		ENGINEER'S SEAL 	THE CITY OF WINNIPEG PUBLIC WORKS DEPARTMENT MARYLAND TWIN BRIDGES REHABILITATION PROJECT WEST BRIDGE REHABILITATION EXPANSION JOINT 1 OF 3	CITY DRAWING NUMBER B108-05-14 SHEET 14 OF 33
2 ISSUED FOR TENDER 01/31/05 NBG 1 ISSUED FOR CITY REVIEW 12/17/04 RAW		RELEASED FOR CONSTRUCTION DATE:		CONSULTANT PROJECT NO. 04-3021-2000	