

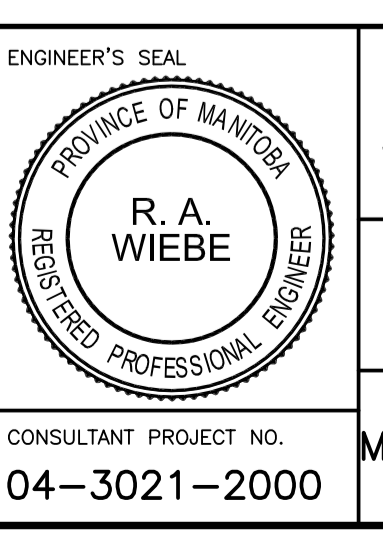
150 mm W.M.	WATERMAIN	150 mm W.M.	HYDRANT	150 mm W.M.	WATERMAIN	150 mm W.M.	HYDRANT
300 mm L.D.S.	LAND DRAINAGE SEWER	300 mm L.D.S.	CONCRETE	300 mm L.D.S.	LAND DRAINAGE SEWER	300 mm L.D.S.	CONCRETE
250 mm W.W.S.	WASTE WATER SEWER	250 mm W.W.S.	ASPHALT	250 mm W.W.S.	WASTE WATER SEWER	250 mm W.W.S.	ASPHALT
	MANHOLE		PLANING		MANHOLE		PLANING
	CATCH BASIN		SIDEWALK		CATCH BASIN		SIDEWALK
	CURB INLET		PAVING STONES		CURB INLET		PAVING STONES
	JUNCTIONS		PARTIAL DEPTH REPAIR		JUNCTIONS		PARTIAL DEPTH REPAIR
	CULVERT		PROPERTY LINE		CULVERT		PROPERTY LINE
	GAS		SURVEY BAR		GAS		SURVEY BAR
EXISTING	LEGEND-PLAN	PROPOSED	EXISTING	LEGEND-PLAN	PROPOSED	EXISTING	LEGEND-PROFILE

**UNDERGROUND STRUCTURES**

SUPV. U/G STRUCTURES COMMITTEE DATE

**NOTE:**  
LOCATION OF UNDERGROUND STRUCTURES AS SHOWN ARE BASED ON THE BEST INFORMATION AVAILABLE. BUT NO GUARANTEE IS GIVEN THAT ALL EXISTING UTILITIES ARE SHOWN OR THAT THE GIVEN LOCATIONS ARE EXACT. CONFIRMATION OF EXISTENCE AND EXACT LOCATION OF ALL SERVICES MUST BE OBTAINED FROM THE INDIVIDUAL UTILITIES BEFORE PROCEEDING WITH CONSTRUCTION.

B.M. ELEV.					
DESIGNED BY	RAW				
DRAWN BY	RTP				
CHECKED BY	RAW				
APPROVED BY					
HOR. SCALE	1:250				
VERTICAL					
DATE	DEC. 2004				



**THE CITY OF WINNIPEG**  
PUBLIC WORKS DEPARTMENT

**MARYLAND TWIN BRIDGES REHABILITATION PROJECT**  
WEST BRIDGE REHABILITATION

MISCELLANEOUS APPROACH SURFACE WORKS

CITY DRAWING NUMBER: B108-05-31  
SHEET 31 OF 33

CONSULTANT PROJECT NO. 04-3021-2000