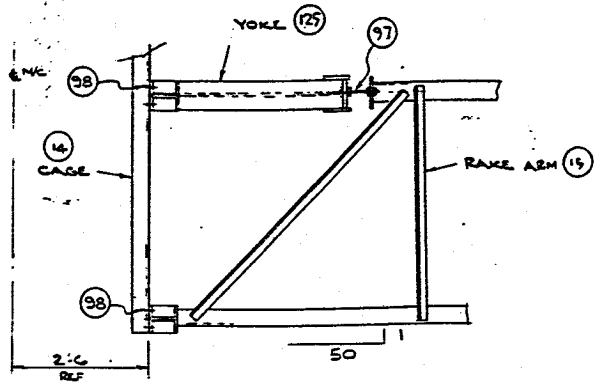
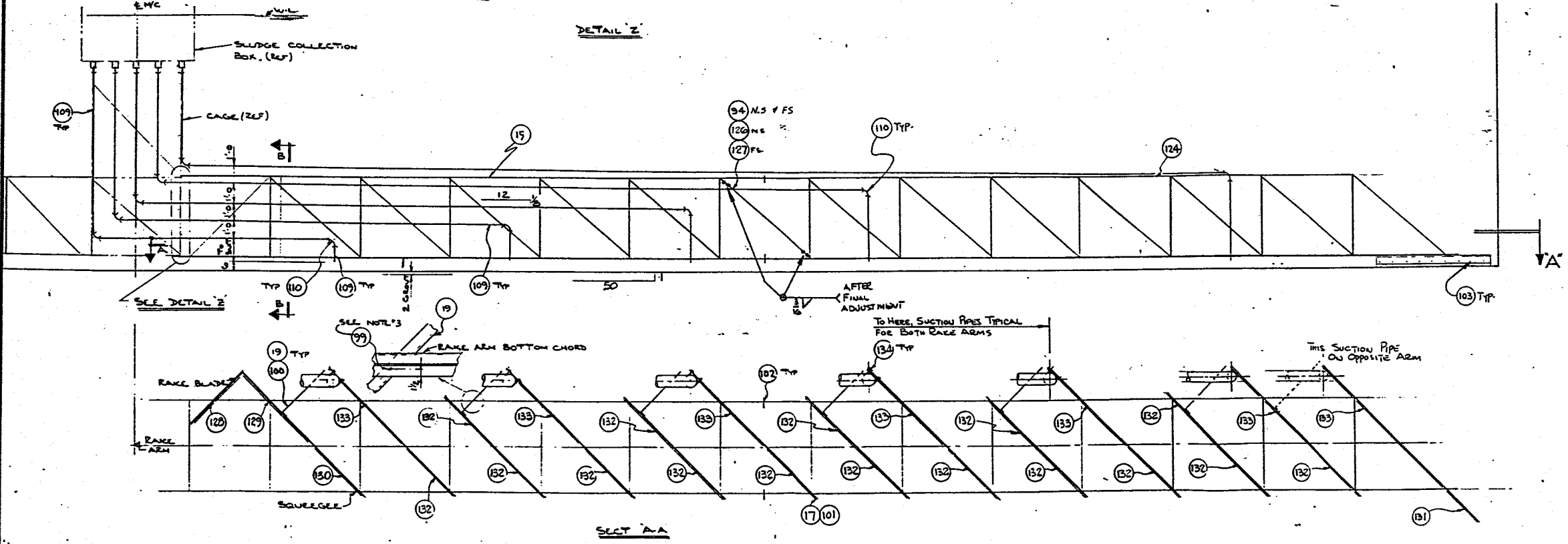


SECT B-B  
TYP. (6) PLACES



DETAIL Z

NOTE  
 1) WORK THIS TAG WITH GENERAL ERECTION TAG NO. CO3344D039  
 2) PIPE IS FURNISHED IN 13'-0" NOMINAL LENGTHS. FIELD CUT CUT ENDS TO BE DEBURRED, BEVELED AND LUBRICATED WITH A SOAP SOLUTION BEFORE INSTALLING IN PIPE OR ELBOW BELL. INSTALL RUBBER RING WITH COLOUR CODE FACING INSTALLED IN CLEAN, DRY GROOVE OF BELL  
 3) SELECTOR TO DRILL (12) 9/16" HOLES IN RAKE ARM BOTTOM CHORD & DEFLECTOR BLADE ITEM (19) AT ASSY.



SECT A-A

FOR BALLOONED ITEMS SEE MATERIAL LIST  
 LC03344D039

REF 100027 (2024)

		Measurement Details
<small>This drawing and all information therein is the property of EIMCO Process Equipment and is confidential and shall not be made public or copied. This drawing is loaned subject to return upon demand and is not to be used directly or indirectly in any way detrimental to our interests.</small>		
DO NOT SCALE DIMENSIONS DATE: JULY 2014 DRAWN BY: SMC CHECKED BY: JLD		HOLD RATIONAL DIMENSIONS TO ± 1/64"
RAKE ARM & PIPING ERECTION C35 CLARIFIER		210E-3344
REVISION		CO3344D039

NO.	BY	CHKD	DATE	APP.