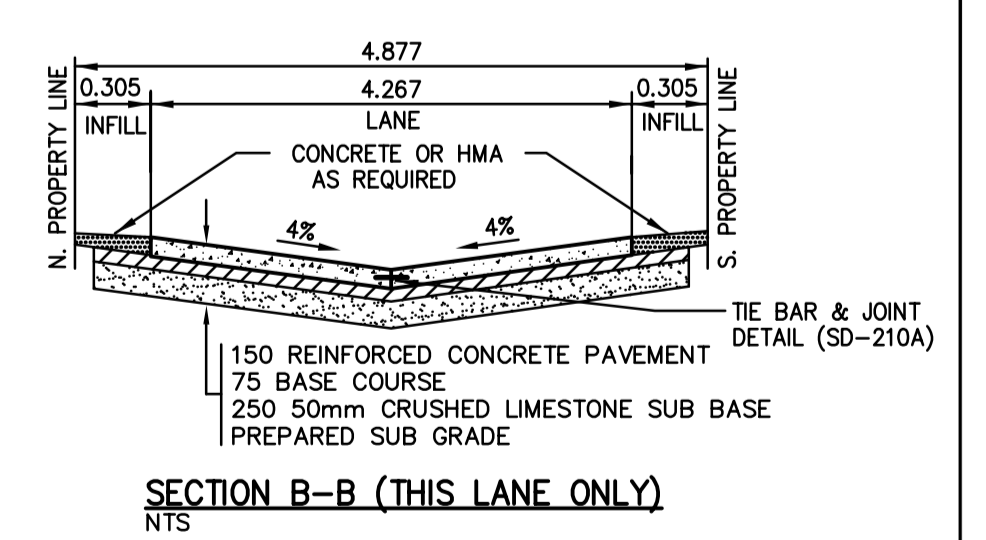
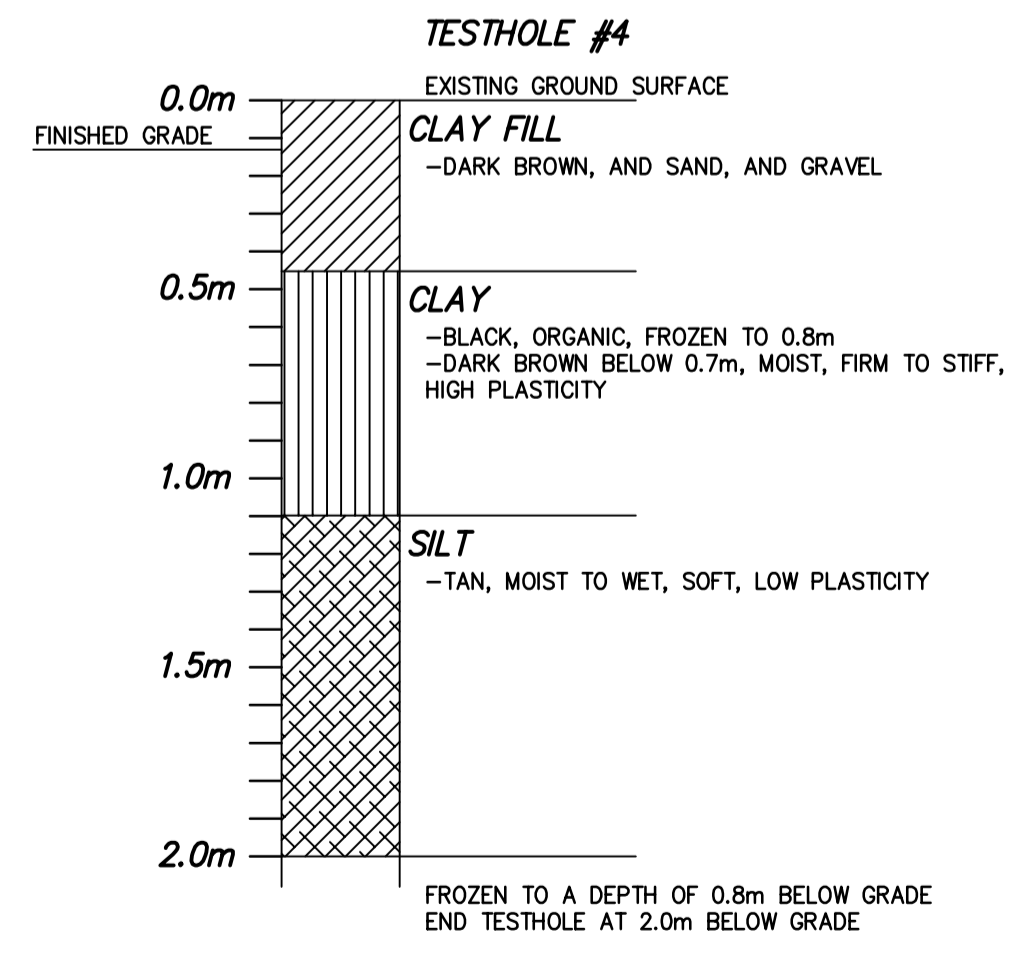


NOTE:
CONTRACTOR TO PROTECT ALL SURVEY BARS FROM DAMAGE



EXISTING	LEGEND-PLAN	PROPOSED	EXISTING	LEGEND-PLAN	PROPOSED	EXISTING	LEGEND-PROFILE	PROPOSED
---	WATERMAIN	---	---	M.T.S.	---	---	EAST PROPERTY LINE	---
⊙	HYDRANT	⊙	⊙	HYDRO POLE	---	---	WEST PROPERTY LINE	---
⊕	VALVE	⊕	---	PROPERTY LINE	---	---	CENTRE LINE	---
---	LAND DRAINAGE SEWER	---	---	BARRIER CURB	---	---	EAST/SOUTH GARAGE PAD	---
---	WASTE WATER SEWER	---	---	LIGHT STANDARD	---	---	WEST/NORTH GARAGE PAD	---
○	MANHOLE	●	---	CONCRETE SIDEWALK	---	---		---
□	CATCH BASIN	■	---	150 REIN. CONC. PAV'T	---	---		---
Δ	CURB INLET	▲	---	LIP CURB & GUTTER	---	---		---
---	UTILITIES ADJUSTED	○ ⊕ □ Δ	---	EDGE OF PAVEMENT	---	---		---
---	SUBDRAIN	---	---		---	---		---
---	GAS	---	---		---	---		---

LOCATIONS APPROVED		UNDERGROUND STRUCTURES	
SUPV	U/G STRUCTURES	DATE	

NSLEA Engineers & Planners Inc.
Suite 111-93 Lombard Avenue Winnipeg, Manitoba R3B 3B1
Phone (204) 943-3178 Facsimile (204) 943-4948

DESIGNED BY	MS	CHECKED BY	KVC
DRAWN BY	MS	APPROVED BY	RMB
HOR. SCALE	1:250	RELEASED FOR CONSTRUCTION	
VERTICAL	1:10	DATE	FEBRUARY 5 2004

ENGINEER'S SEAL
PROVINCE OF MANITOBA
K.S. VAN CAMP
Member
10351
REGISTERED PROFESSIONAL ENGINEER
CONSULTANT ACAD DWG. NO.
41282-C-02

THE CITY OF WINNIPEG
PUBLIC WORKS DEPARTMENT
ENGINEERING SERVICES DIVISION

2004 LOCAL IMPROVEMENTS PROGRAM
LANE PAVEMENT CONSTRUCTION
LLOYD ST./ST. MARY'S RD. LANES
2+40.000 to LYNDALE DR.
LLOYD ST. to 1+36.620

CITY DRAWING NUMBER
SHEET 2 OF 9
Bid Opportunity No.
65-2004