

MATCHLINE STA 2+50

- CONSTRUCTION NOTES**
- 1) CURB REPLACEMENT AS DIRECTED BY THE CONTRACT ADMINISTRATOR.
 - 2) ALL STREET RADIUS CURB UNDER 15M RADIUS SHALL BE REPLACED AS MODIFIED OR AS DIRECTED BY THE CONTRACT ADMINISTRATOR.
 - 3) PAVEMENT REPAIRS SHOWN ARE ONLY A REPRESENTATIVE SAMPLE OF THE TENDERED QUANTITIES.
 - 4) ASPHALT TIE-INS TO BE DETERMINED IN THE FIELD BY THE CONTRACT ADMINISTRATOR.
 - 5) SIDEWALK REPLACEMENT AS DIRECTED BY THE CONTRACT ADMINISTRATOR.
 - 6) BOULEVARD REPLACEMENT AS DIRECTED BY THE CONTRACT ADMINISTRATOR.

WARNING

IF POWER EQUIPMENT OR EXPLOSIVES ARE TO BE USED FOR EXCAVATION ON THIS PROJECT THE CONTRACTOR MUST:

- 1) OBTAIN CLEARANCE FROM THE GAS UTILITY PRIOR TO EXCAVATION.
- 2) TAKE PRECAUTION TO AVOID DAMAGE TO GAS UTILITY INSTALLATIONS.

SEE PROVINCIAL REGULATION 210/72 FOR DETAILS

ALL CHAINAGES ARE MEASURED ALONG THE CENTER LINE OF CONSOL AVENUE

WATERMAIN RENEWAL TO BE DONE BY OTHERS

METRIC
WHOLE NUMBERS INDICATE MILLIMETRES
DECIMALIZED NUMBERS INDICATE METRES

EXISTING	LEGEND - PLAN	PROPOSED	EXISTING	LEGEND - PLAN	PROPOSED	EXISTING	LEGEND - PROFILE	PROPOSED
150 WM	WATERMAIN	150 WM	HYDRO	MTS	150 WM	WATERMAIN	300 LBS	300 LBS
300 LBS	HYDRANT	300 LBS	CONCRETE	CONCRETE	300 LBS	SEWER	300 LBS	300 LBS
250 CS	VALVE	250 CS	LIMIT OF ASPHALT	LIMIT OF ASPHALT	250 CS			
250 CS	LAND DRAINAGE COMBINED SEWER	250 CS	CURB RENEWAL	CURB RENEWAL	250 CS			
MANHOLE	MANHOLE	MANHOLE	ASPHALT	ASPHALT	MANHOLE			
CATCH BASIN	CATCH BASIN	CATCH BASIN	ELEVATIONS	ELEVATIONS	CATCH BASIN			
CURB INLET	CURB INLET	CURB INLET	PROPERTY LINE	PROPERTY LINE	CURB INLET			
WOOD POLES	WOOD POLES	WOOD POLES	SURVEY BAR	SURVEY BAR	WOOD POLES			
LAMP STANDARD	LAMP STANDARD	LAMP STANDARD	CURB STOP	CURB STOP	LAMP STANDARD			
GAS	GAS	GAS	RAMP CURB	RAMP CURB	GAS			

LOCATION APPROVED UNDERGROUND STRUCTURES

SUPR. U/C STRUCTURES DATE COMMITTEE

NOTE:
LOCATION OF UNDERGROUND STRUCTURES AS SHOWN ARE BASED ON THE BEST INFORMATION AVAILABLE, BUT NO GUARANTEE IS GIVEN THAT ALL EXISTING UTILITIES ARE SHOWN OR THAT THE GIVEN LOCATIONS ARE EXACT. CONFIRMATION OF EXISTENCE AND EXACT LOCATION OF ALL SERVICES MUST BE OBTAINED FROM THE INDIVIDUAL UTILITIES BEFORE PROCEEDING WITH CONSTRUCTION.

NO.	REVISIONS	DATE	BY

B.M. ELEV. GBM 28-056 230.501

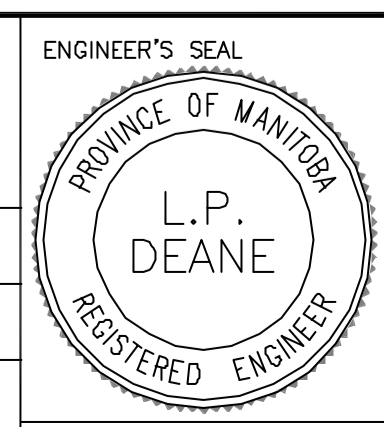
ENGINEERING DIVISION
TECHNOLOGY SERVICES BRANCH
106 - 1155 PACIFIC AVE

DESIGNED BY C.T./R.K.D. CHECKED BY D.K.

DRAWN BY C.T. APPROVED BY T.M.C.

HOR. SCALE: 1 : 250
VERTICAL: 1 : 10

DATE 2004/03/17



THE CITY OF WINNIPEG
PUBLIC WORKS DEPARTMENT

CONSOL AVENUE
FROM LOUELDA STREET TO BESANT STREET
RECONSTRUCTION
FROM STA. 1+00 TO STA. 2+50

CITY DRAWING NUMBER SE-04-01
SHEET 1 OF 2

1

BID OPPORTUNITY NO. 79-2004