

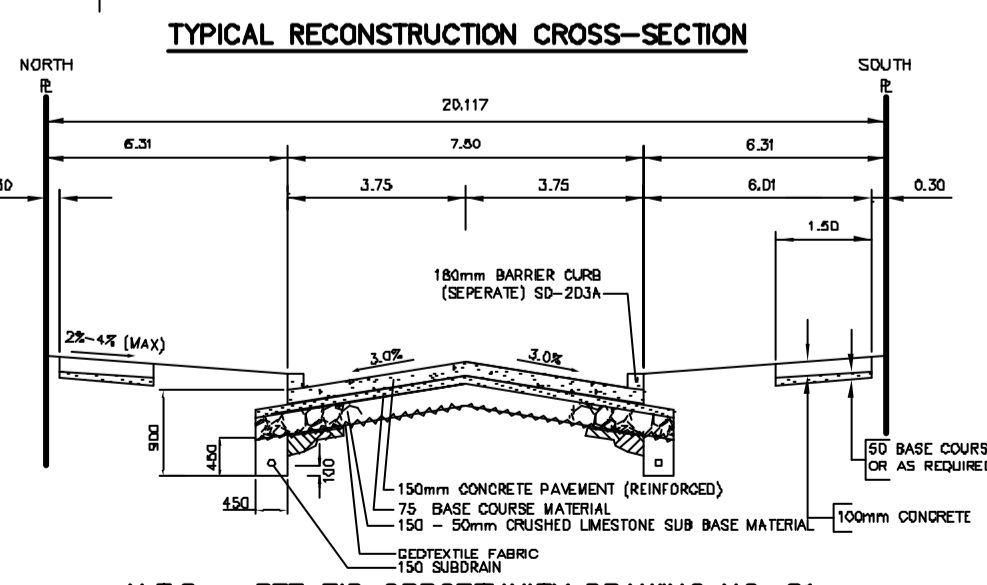
- CONSTRUCTION NOTES**
- 1) CURB REPLACEMENT AS DIRECTED BY THE CONTRACT ADMINISTRATOR
 - 2) ALL STREET RADIUS CURB UNDER 15M RADIUS SHALL BE REPLACED AS MODIFIED OR AS DIRECTED BY THE CONTRACT ADMINISTRATOR
 - 3) PAVEMENT REPAIRS SHOWN ARE ONLY A REPRESENTATIVE SAMPLE OF THE TENDERED QUANTITIES
 - 4) ASPHALT TIE-INS TO BE DETERMINED IN THE FIELD BY THE CONTRACT ADMINISTRATOR
 - 5) SIDEWALK REPLACEMENT AS DIRECTED BY THE CONTRACT ADMINISTRATOR
 - 6) BOULEVARD REPLACEMENT AS DIRECTED BY THE CONTRACT ADMINISTRATOR
 - 7) LDS INSTALLED USING TRENCHLESS INSTALLATION

WARNING

IF POWER EQUIPMENT OR EXPLOSIVES ARE TO BE USED FOR EXCAVATION ON THIS PROJECT THE CONTRACTOR MUST:

- 1) OBTAIN CLEARANCE FROM THE GAS UTILITY PRIOR TO EXCAVATION.
- 2) TAKE PRECAUTION TO AVOID DAMAGE TO GAS UTILITY INSTALLATIONS.

SEE PROVINCIAL REGULATION 210/72 FOR DETAILS



150 WM	WATERMAIN	150 WM	HYDRO	150 WM	WATERMAIN	150 WM	WATERMAIN
+	HYDRANT	+	MTS	+	SEWER	+	SEWER
o	VALVE	o	CONCRETE	o		o	
300 LDS	LAND DRAINAGE SEWER	300 LDS	LIMIT OF ASPHALT	300 LDS		300 LDS	
250 CS	COMBINED SEWER	250 CS	CURB RENEWAL	250 CS		250 CS	
o	MANHOLE	o	ASPHALT	o		o	
□	CATCH BASIN	□	ELEVATIONS	□	SOUTH/EAST P	□	SOUTH/EAST P
△	CURB INLET	△	PROPERTY LINE	△	NORTH/WEST P	△	NORTH/WEST P
☆	WOOD POLES	☆	SURVEY BAR	☆	@ PROFILE	☆	@ PROFILE
o-o	LAMP STANDARD	o-o	CURB STOP	o-o	SOUTH/EAST GUTTER	o-o	SOUTH/EAST GUTTER
o	GAS	o	RAMP CURB	o	NORTH/WEST GUTTER	o	NORTH/WEST GUTTER
EXISTING	LEGEND - PLAN	PROPOSED	EXISTING	LEGEND - PLAN	PROPOSED	EXISTING	LEGEND - PROFILE
			PROPOSED			PROPOSED	

LOCATION APPROVED
UNDERGROUND STRUCTURES

DATE: _____

NOTE:
LOCATION OF UNDERGROUND STRUCTURES AS SHOWN ARE BASED ON THE BEST INFORMATION AVAILABLE, BUT NO GUARANTEE IS GIVEN THAT ALL EXISTING UTILITIES ARE SHOWN OR THAT THE GIVEN LOCATIONS ARE EXACT. CONFIRMATION OF EXISTENCE AND EXACT LOCATION OF ALL UTILITIES MUST BE OBTAINED FROM THE INDIVIDUAL UTILITIES BEFORE PROCEEDING WITH CONSTRUCTION.

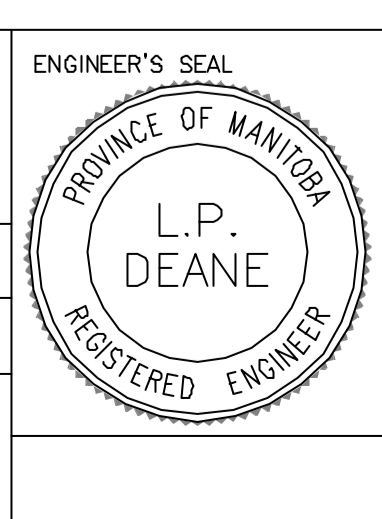
NO.	REVISIONS	DATE	BY

ENGINEERING DIVISION
TECHNOLOGY SERVICES BRANCH
106 - 1155 PACIFIC AVE

DESIGNED BY: R.D.
CHECKED BY: D.K.
DRAWN BY: R.D.
APPROVED BY: T.M.C.

HOR. SCALE: 1 : 250
VERTICAL: 1 : 10

DATE: 2004/02/03



THE CITY OF WINNIPEG
PUBLIC WORKS DEPARTMENT

WHITTIER AVENUE
FROM HOKA STREET TO MADELINE STREET
RECONSTRUCTION
FROM HOKA STREET
TO STA: 2+54

CITY DRAWING NUMBER: SE-04-04
SHEET 1 OF 2



MATCH LINE STA. 2+54

N.T.S. SEE BID OPPORTUNITY DRAWING NO. 01