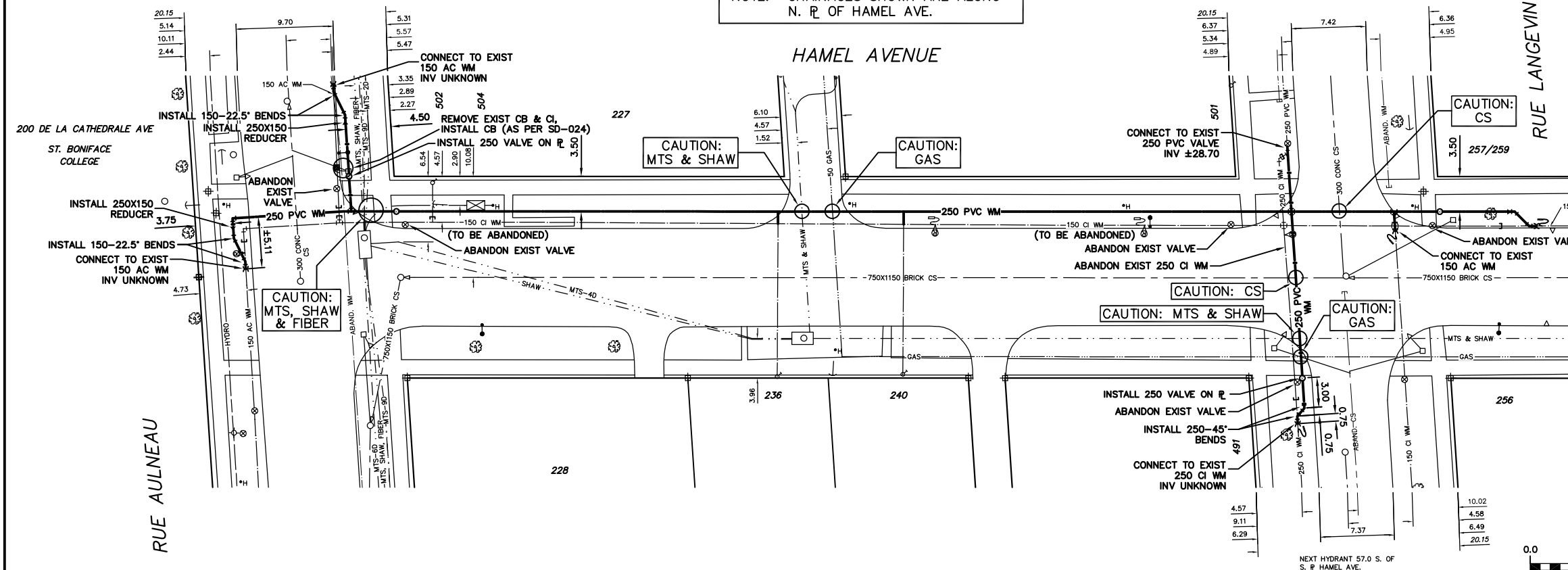


WATER SERVICE INFORMATION					
ADDRESS	SIZE(mm) & TYPE (STREET)	SIZE(mm) & TYPE (PROP)	SHORT & LONG MEASUREMENT	CORP. LOCATION	REMARKS
227 HAMEL AVE	RESIDENTIAL	-	-	-	-
228 HAMEL AVE	COMMERCIAL	19 COPPER	2.29 LR CRN HSE	-	SERV. OFF AULNEAU
236 HAMEL AVE	RESIDENTIAL	19 COPPER	4.42 LR CRN HSE	-	SERV. REPAIR JUL/06/76
240 HAMEL AVE	RESIDENTIAL	19 COPPER	20.4 WER #235	-	S/C REPAIR JUN/11/85
236 HAMEL AVE	RESIDENTIAL	19 COPPER	3.35 LR CRN HSE	-	SERV. OFF LANGEVIN
257/259 HAMEL AVE	RESIDENTIAL	19 COPPER	7.01 WER #236	-	S/C REPAIR JUN/05/85
491 RUE LANGEVIN	RESIDENTIAL	19 COPPER	3.66 LR CRN HSE	-	SERV. OFF LANGEVIN
501 RUE LANGEVIN	RESIDENTIAL	19 COPPER	18.3 SNR #256	-	SERV. OFF LANGEVIN
502/504/506 AULNEAU	COMMERCIAL	19 COPPER	5.18 LR CRN HSE	-	SERV. OFF LANGEVIN
200 DE LA CATHEDRALE	COMMERCIAL	19 COPPER	16.15 WER #257	-	SERV. OFF LANGEVIN
200 DE LA CATHEDRALE	COMMERCIAL	19 COPPER	0.91 LR CRN HSE	-	SERV. OFF LANGEVIN
200 DE LA CATHEDRALE	COMMERCIAL	19 COPPER	12.19 FROM NL	-	SERV. OFF LANGEVIN
200 DE LA CATHEDRALE	COMMERCIAL	19 COPPER	2.74 LR CRN HSE	-	SERV. OFF LANGEVIN
200 DE LA CATHEDRALE	COMMERCIAL	19 COPPER	9.75 FROM SL	-	SERV. OFF LANGEVIN
200 DE LA CATHEDRALE	COMMERCIAL	19 COPPER	2.13 LR CRN HSE	-	SERV. OFF LANGEVIN
200 DE LA CATHEDRALE	COMMERCIAL	19 COPPER	9.45 E OF AULNEAU	-	MULTIPLE SERV. TO 504#502
200 DE LA CATHEDRALE	COMMERCIAL	19 COPPER	21.53 L/R BLDG	-	SERV. OFF DE LA CATHEDRALE
200 DE LA CATHEDRALE	COMMERCIAL	150 COPPER	85.04 WM AULNEAU	-	SERV. OFF AULNEAU
200 DE LA CATHEDRALE	COMMERCIAL	150 PVC	38.71 NSL BLDG	-	OPP S/C SERV. OFF AULNEAU
200 DE LA CATHEDRALE	COMMERCIAL	150 PVC	71.01 NNL HAMEL	-	SERV. OFF AULNEAU

NOTE: CHAINAGES SHOWN ARE ALONG N. R. OF HAMEL AVE.



- CONSTRUCTION NOTES**
1. EXPOSE EXISTING WATERMAIN & CONFIRM INVERTS PRIOR TO CONSTRUCTION.
  2. LOCATION OF ALL SERVICES TO BE CONFIRMED IN THE FIELD.
  3. INSTALL WATERMAIN BY TRENCHLESS METHODS.
  4. TRENCHES AND EXCAVATIONS WITHIN 1 METRE OF A PAVED AREA INCLUDING SIDEWALKS SHALL BE CLASS 3 BACKFILL.
  5. ALL MATERIALS SHALL CONFORM TO THE CITY OF WINNIPEG STANDARD CONSTRUCTION SPECIFICATIONS.
  6. MINIMUM COVER TO TOP OF WATERMAIN SHALL BE 2.4 m.
  7. REPLACE ALL EXISTING LEAD SERVICES FROM PROPOSED WATERMAIN TO R.
  8. NOTIFY ALL AFFECTED RESIDENTS AND BUSINESSES 24 HOURS IN ADVANCE OF ANY WATER SHUTDOWNS OR DISRUPTION OF SERVICE.

**METRIC**  
WHOLE NUMBERS INDICATE MILLIMETRES  
DECIMALIZED NUMBERS INDICATE METRES

NOTE: ALL VALVES TO BE INSTALLED CLOCKWISE TO CLOSE

**WARNING**

IF POWER EQUIPMENT OR EXPLOSIVES ARE TO BE USED FOR EXCAVATION ON THIS PROJECT THE CONTRACTOR MUST:

- 1) NOTIFY THE GAS COMPANY OF THE PROPOSED LOCATION OF EXCAVATION.
- 2) TAKE PRECAUTION TO AVOID DAMAGE TO GAS COMPANY INSTALLATIONS.

SEE PROVINCIAL REGULATION 210/72 FOR DETAILS

200 WM	WATERMAIN	200 WM	SL, HYDRO	150 WM	WATERMAIN	150 WM
+	HYDRANT	+	MTS	+	HYDRANT	+
o	VALVE	o	TRAFFIC SIGNALS	o	VALVE	o
525 LDS	LAND DRAINAGE SEWER	525 LDS	GAS	50 GAS	LAND DRAINAGE SEWER	300 LDS
375 WWS	WASTEWATER SEWER	375 WWS	SURVEY BAR	250 WWS	WASTEWATER SEWER	250 WWS
o	MANHOLE	o	FENCE	o	PROFILE	o
□	CATCH BASIN	□	POLE - HYDRO, MTS	□	GROUND ABOVE PIPE	□
▽	CURB INLET	▽	CURB STOP	▽		▽
△	REDUCER	△	GUY ANCHOR	△		△
X	COUPLING	X	LIGHT STANDARD	X		X
U	ANODE	U	TREE	U		U
EXISTING	LEGEND-PLAN	PROPOSED	EXISTING	LEGEND-PLAN	PROPOSED	EXISTING
				LEGEND-PROFILE	PROPOSED	

LOCATION APPROVED UNDERGROUND STRUCTURES	
SUPV. U/O STRUCTURES COMMITTEE	DATE
NOTE: LOCATION OF UNDERGROUND STRUCTURES AS SHOWN ARE BASED ON THE BEST INFORMATION AVAILABLE BUT NO GUARANTEE IS GIVEN THAT ALL EXISTING UTILITIES ARE SHOWN OR THAT THE GIVEN LOCATIONS ARE EXACT. CONFIRMATION OF EXISTENCE AND EXACT LOCATION OF ALL SERVICES MUST BE OBTAINED FROM THE INDIVIDUAL UTILITIES BEFORE PROCEEDING WITH CONSTRUCTION.	

**CITY OF WINNIPEG WATER AND WASTE ENGINEERING DIVISION**

DESIGNED BY: DS/CJH  
CHECKED BY: TW

DRAWN BY: CJH  
APPROVED BY: KZ

HOR. SCALE: 1:250  
VERTICAL SCALE: 1:50

DATE: 2004.03.19

ENGINEER'S SEAL

ORIGINAL SIGNED BY K.R. ZUREK  
04/03/19

BID OPPORTUNITY: 95-2004  
FILENAME: D-8477.dwg  
PLOT DATE: 2004.03.22

**THE CITY OF WINNIPEG WATER AND WASTE DEPARTMENT**

2004 WATERMAIN RENEWALS

**HAMEL AVENUE RUE AULNEAU TO RUE LANGEVIN**

SHEET 5 OF 10  
CITY DRAWING NUMBER: D-8477