

ALL CHAINAGES ARE MEASURED ALONG THE CENTER LINE OF FERMOR AVENUE

- CONSTRUCTION NOTES**
- 1) CURB REPLACEMENT AS DIRECTED BY THE CONTRACT ADMINISTRATOR
 - 2) ALL STREET RADIUS CURB UNDER 15M RADIUS SHALL BE REPLACED AS MODIFIED OR AS DIRECTED BY THE CONTRACT ADMINISTRATOR
 - 3) PAVEMENT REPAIRS SHOWN ARE ONLY A REPRESENTATIVE SAMPLE OF THE TENDERED QUANTITIES
 - 4) ASPHALT TE-INS ON APPROACHES TO BE DETERMINED IN THE FIELD BY THE CONTRACT ADMINISTRATOR
 - 5) ALL BULLNOSES TO HAVE SLOPED FACE

WARNING

IF POWER EQUIPMENT OR EXPLOSIVES ARE TO BE USED FOR EXCAVATION ON THIS PROJECT THE CONTRACTOR MUST:

- 1) OBTAIN CLEARANCE FROM THE GAS UTILITY PRIOR TO EXCAVATION.
- 2) TAKE PRECAUTION TO AVOID DAMAGE TO GAS UTILITY INSTALLATIONS.

SEE PROVINCIAL REGULATION 210/72 FOR DETAILS

TENDER NO. 99-2004

METRIC
WHOLE NUMBERS INDICATE MILLIMETRES
DECIMALIZED NUMBERS INDICATE METRES

150 mm WM	WATERMAIN	150 mm WM	HYDRO	150 mm WM	WATERMAIN
⊕	HYDRANT	⊕	MTS	⊕	HYDRANT
⊙	VALVE	⊙	GAS	⊙	VALVE
⊠	CURB STOP	⊠	CONCRETE	⊠	SEWER
⊡	RAILWAY SIGNAL	⊡	LIMIT OF ASPHALT	⊡	GUTTER
⊢	CULVERT	⊢	ASPHALT	⊢	Ⓢ PROFILE
⊣	MANHOLE	⊣	ELEVATIONS	⊣	MEDIAN GUTTER
⊤	CATCH BASIN	⊤	PROPERTY LINE	⊤	DITCH PROFILE
⊥	CURB INLET	⊥	SURVEY BAR	⊥	DITCH FLOW
⊦	WOOD POLES	⊦	GEODETIC BENCH MARK	⊦	SIGN SINGLE POST
⊧	LAMP STANDARD	⊧	RAMP CURB	⊧	TRAFFIC SIGNAL POLE
EXISTING	LEGEND - PLAN	PROPOSED	LEGEND - PLAN	PROPOSED	LEGEND - PROFILE

LOCATION APPROVED
UNDERGROUND STRUCTURES

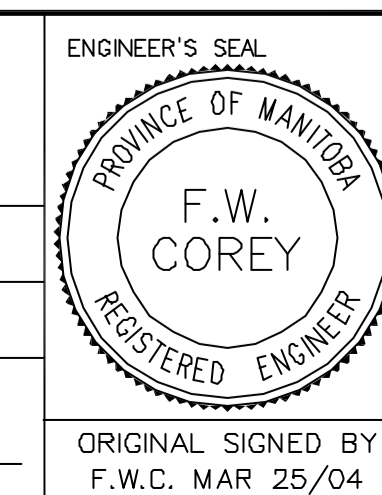
NO. REVISIONS DATE BY

B.M. ELEV. GBM 55-031
232.397m

ENGINEERING DIVISION
TECHNOLOGY SERVICES BRANCH
106 - 1155 PACIFIC AVE

DESIGNED BY: B.K.
DRAWN BY: M.R.J.
HOR. SCALE: 1 : 250
VERTICAL: 1 : 10
DATE: 2004/03/18

CHECKED BY: A.J.P. / B.K.
APPROVED BY:



THE CITY OF WINNIPEG
PUBLIC WORKS DEPARTMENT

FERMOR AVENUE
FROM LAGIMODIERE BLVD. TO ARCHIBALD STREET
ASPHALT RESURFACING AND ASSOCIATED WORKS
FROM STA. 4+00 TO STA. 5+30

ENGINEER'S SEAL
ORIGINAL SIGNED BY
F.W.C. MAR 25/04

City Drawing Number
SE-04-09
SHEET 3 OF 24
3