

ALL CHAINAGES ARE MEASURED ALONG THE CENTER LINE OF FERMOR AVENUE.

- CONSTRUCTION NOTES**
- 1) CURB REPLACEMENT AS DIRECTED BY THE CONTRACT ADMINISTRATOR
  - 2) ALL STREET RADIUS CURB UNDER 15M RADIUS SHALL BE REPLACED AS MODIFIED OR AS DIRECTED BY THE CONTRACT ADMINISTRATOR
  - 3) PAVEMENT REPAIRS SHOWN ARE ONLY A REPRESENTATIVE SAMPLE OF THE TENDERED QUANTITIES
  - 4) ASPHALT TIE-INS ON APPROACHES TO BE DETERMINED IN THE FIELD BY THE CONTRACT ADMINISTRATOR
  - 5) ALL BULLNOSES TO HAVE SLOPED FACE.

- WARNING**
- IF POWER EQUIPMENT OR EXPLOSIVES ARE TO BE USED FOR EXCAVATION ON THIS PROJECT THE CONTRACTOR MUST:
- 1) OBTAIN CLEARANCE FROM THE GAS UTILITY PRIOR TO EXCAVATION.
  - 2) TAKE PRECAUTION TO AVOID DAMAGE TO GAS UTILITY INSTALLATIONS.
- SEE PROVINCIAL REGULATION 210/72 FOR DETAILS

TENDER NO. 99-2004

150 mm WM	WATERMAIN	150 mm WM	HYDRO	150 mm WM	WATERMAIN
⊕	HYDRANT	⊕	MTS	⊕	HYDRANT
⊙	VALVE	⊙	GAS	⊙	VALVE
⊕	CURB STOP	⊕	CONCRETE	⊕	SEWER
⊕	RAILWAY SIGNAL	⊕	LIMIT OF ASPHALT	⊕	GUTTER
⊕	CULVERT	⊕	ASPHALT	⊕	⊕ PROFILE
⊕	MANHOLE	⊕	ELEVATIONS	⊕	MEDIAN GUTTER
⊕	CATCH BASIN	⊕	PROPERTY LINE	⊕	DITCH PROFILE
⊕	CURB INLET	⊕	SURVEY BAR	⊕	DITCH FLOW
⊕	WOOD POLES	⊕	GEODETIC BENCH MARK	⊕	SIGN SINGLE POST
⊕	LAMP STANDARD	⊕	RAMP CURB	⊕	TRAFFIC SIGNAL POLE
EXISTING	LEGEND - PLAN	PROPOSED	EXISTING	LEGEND - PLAN	PROPOSED

**LOCATION APPROVED**  
UNDERGROUND STRUCTURES

SUPR. U/G STRUCTURES DATE COMMITTEE

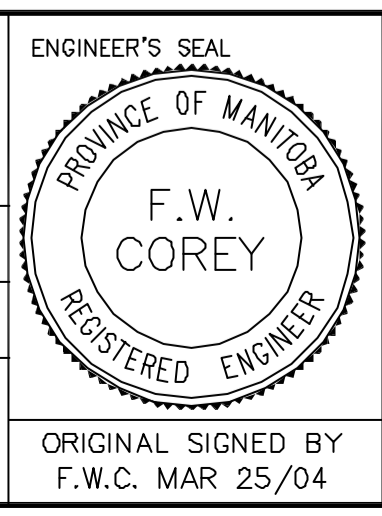
NOTE:  
LOCATION OF UNDERGROUND STRUCTURES AS SHOWN ARE BASED ON THE BEST INFORMATION AVAILABLE, BUT NO GUARANTEE IS GIVEN THAT ALL EXISTING UTILITIES ARE SHOWN OR THAT THE GIVEN LOCATIONS ARE EXACT. CONFIRMATION OF EXISTENCE AND EXACT LOCATION OF ALL SERVICES MUST BE OBTAINED FROM THE INDIVIDUAL UTILITIES BEFORE PROCEEDING WITH CONSTRUCTION.

B.M. ELEV.	GBM 55-031
	232.397m
NO.	REVISIONS
DATE	BY

ENGINEERING DIVISION  
TECHNOLOGY SERVICES BRANCH  
106 - 1155 PACIFIC AVE

DESIGNED BY B.K.  
DRAWN BY M.R.J.  
HOR. SCALE: 1 : 250  
VERTICAL: 1 : 10  
DATE 2004/03/18

CHECKED BY A.J.P. / B.K.  
APPROVED BY



**THE CITY OF WINNIPEG**  
PUBLIC WORKS DEPARTMENT

**FERMOR AVENUE**  
FROM LAGIMODIERE BLVD. TO ARCHIBALD STREET  
ASPHALT RESURFACING AND ASSOCIATED WORKS  
FROM STA. 5+50 TO STA. 7+00

CITY DRAWING NUMBER SE-04-10  
SHEET 4 OF 24  
4

METRIC  
WHOLE NUMBERS INDICATE MILLIMETRES  
DECIMALIZED NUMBERS INDICATE METRES