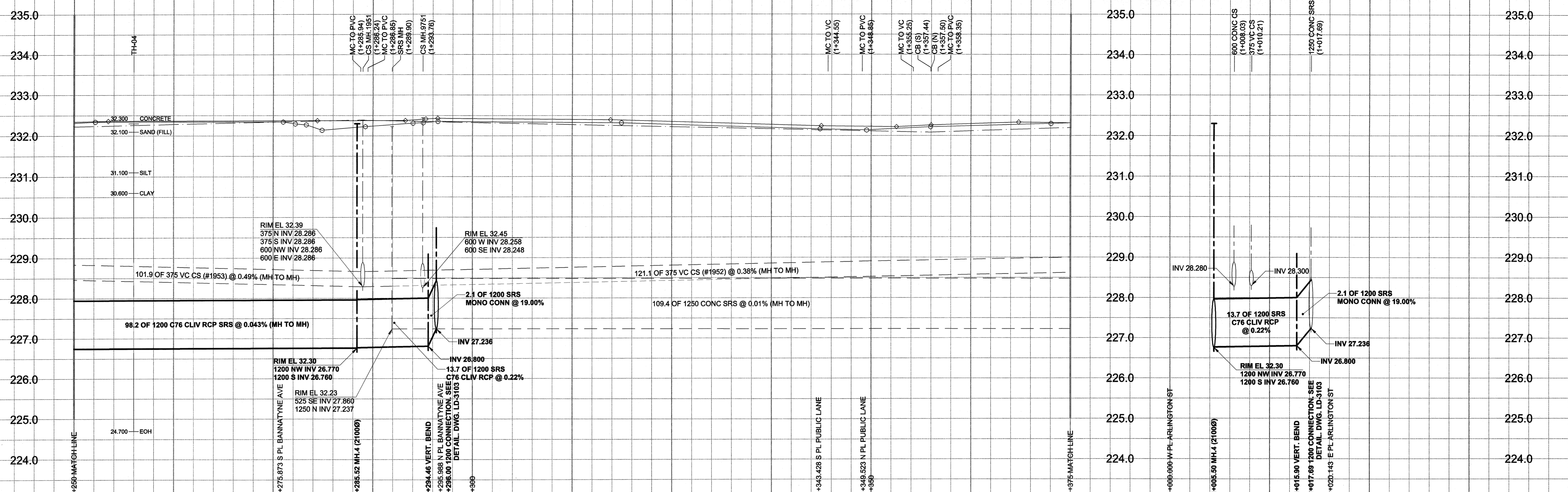


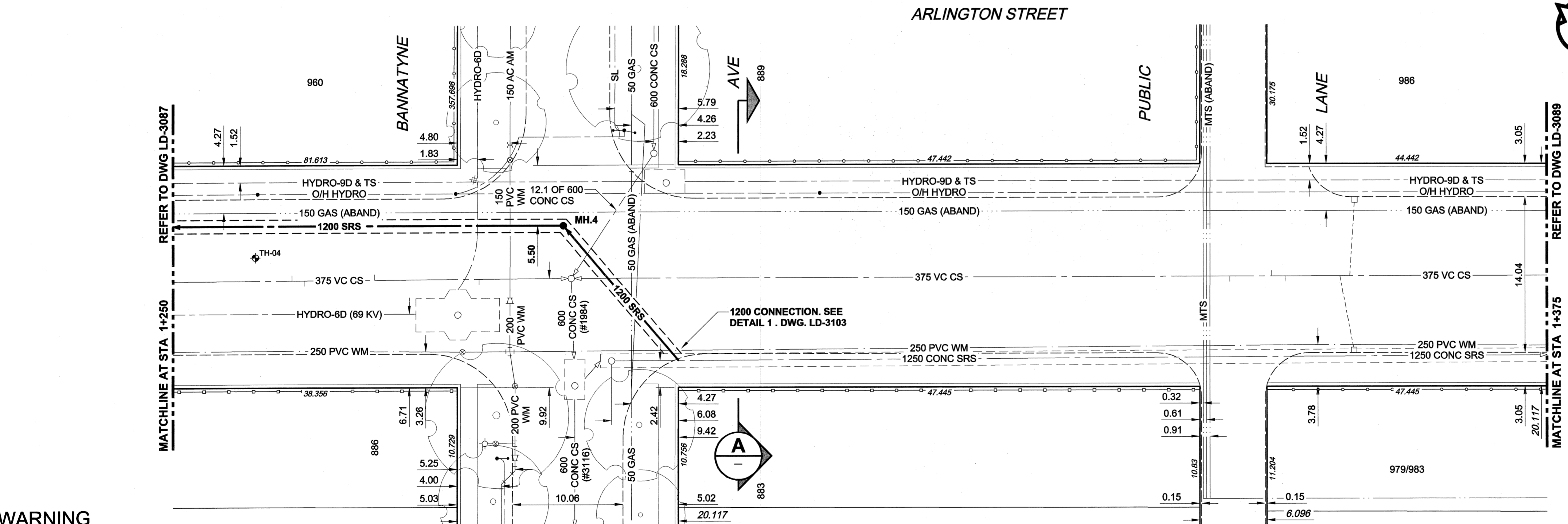
D. SIZE 22" x 34" (559mm x 864mm)

PLOT: 05/02/08 4:30:49 PM

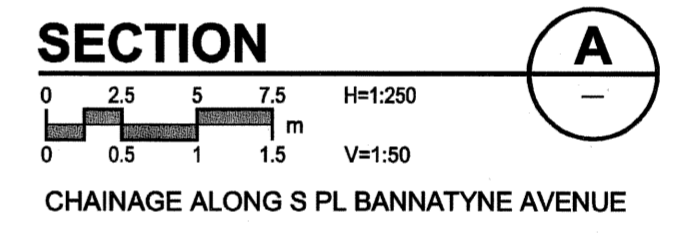
UMA FILE NAME: D285-177-01_01-C-1003_RX.dwg Saved By: atepjpl



CHAINAGE ALONG E PL



WARNING
 IF POWER EQUIPMENT OR EXPLOSIVES ARE TO BE USED FOR EXCAVATION ON THIS PROJECT, THE CONTRACTOR MUST:
 1) NOTIFY THE GAS COMPANY OF THE PROPOSED LOCATION OF EXCAVATION.
 2) TAKE PRECAUTION TO AVOID DAMAGE TO GAS COMPANY INSTALLATIONS.
 SEE PROVINCIAL REGULATION 140/92 FOR DETAILS



- CONSTRUCTION NOTES:**
- For detailed test hole information, see specification.
 - The location of all services is to be confirmed in the field.
 - Install new sewers and catchbasin leads by trenchless methods wherever possible.
 - Renew/Rehabilitate catchbasins & renew catchbasin leads where noted.

150 mm WM		300 mm LDS		250 mm WWS		150 mm WM		300 mm LDS		250 mm WWS	
HYDRANT	REDUCER	LAND DRAINAGE SEWER	ANODE	WASTE WATER SEWER	HYDRO	MANHOLE	MTS	LAND DRAINAGE SEWER	ANODE	WASTE WATER SEWER	HYDRO
VALVE	COUPLING		HYDRO	CATCH BASIN	MTS	CATCH BASIN	MTS	PAVEMENT CROWN	HYDRO	CATCH BASIN	MTS
			TESTHOLE	CURB INLET	GAS	CURB INLET	GAS	N/W PROPERTY LINE	TESTHOLE	CURB INLET	GAS
			LAMP STANDARD	CULVERT	TESTHOLE	CULVERT	TESTHOLE	S/E PROPERTY LINE	LAMP STANDARD	CULVERT	TESTHOLE
			TREE	PIPE ABANDONMENTS	TREE	PIPE ABANDONMENTS	TREE	N/W GUTTER	TREE	PIPE ABANDONMENTS	TREE
				SURVEY BAR		SURVEY BAR		S/E GUTTER		SURVEY BAR	
EXISTING	LEGEND - PLAN	NEW	EXISTING	LEGEND - PLAN	NEW	EXISTING	LEGEND - PROFILE	NEW	EXISTING	LEGEND - PROFILE	NEW

LOCATION APPROVED
 UNDERGROUND STRUCTURES
 SUPR. U/G STRUCTURES COMMITTEE DATE
 NOTE:
 LOCATION OF UNDERGROUND STRUCTURES AS SHOWN ARE BASED ON THE BEST INFORMATION AVAILABLE. BUT NO GUARANTEE IS GIVEN THAT ALL EXISTING UTILITIES ARE SHOWN OR THAT THE GIVEN LOCATIONS ARE EXACT. CONFIRMATION OF EXISTENCE AND EXACT LOCATION OF ALL SERVICES MUST BE OBTAINED FROM THE INDIVIDUAL UTILITIES BEFORE PROCEEDING WITH CONSTRUCTION.

BM 36-046 ELEV 232.498m	N.W. Cor. Notre Dame Ave. & Arlington St., Tblt. in E. Conc. foundation No. 909 Notre Dame Ave., 0.5m S. & 0.05m below tyndall stone N.E. Cor. of Bldg.
0	ISSUED FOR CONSTRUCTION 05/02/08 ADL
NO.	REVISIONS YYYMMDD BY

UMA An AECOM Company	
2004 UMA ENGINEERING LTD. ALL RIGHTS RESERVED.	
DESIGNED BY	FMI/GEB
CHECKED BY	ADL
DRAWN BY	ADL
APPROVED BY	ADL
HOR. SCALE	1:250
VERT. SCALE	1:50
DATE	05/02/08

METRIC
 WHOLE NUMBERS INDICATE MILLIMETRES
 DECIMALIZED NUMBERS INDICATE METRES

APEGM
 Certificate of Authorization
 UMA Engineering Ltd.
 No. 256 Expiry: April 30, 2005

PROFESSIONAL'S SEAL
 PROVINCE OF MANITOBA
 REGISTERED PROFESSIONAL ENGINEER
 A. NAGY
 Feb 8, 2005

THE CITY OF WINNIPEG
 WATER AND WASTE DEPARTMENT
ALEXANDER/BANNATYNE
COMBINED SEWER RELIEF
CONTRACT 1A
 ARLINGTON STREET
 55m N OF McDERMOTT AVENUE
 TO 22m S OF WILLIAM AVENUE

SHEET 3 OF 18
 CITY DRAWING NUMBER
LD-3088
 REV 0

BID OPPORTUNITY NO. 12-2005