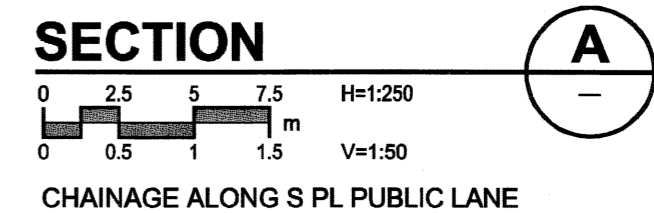
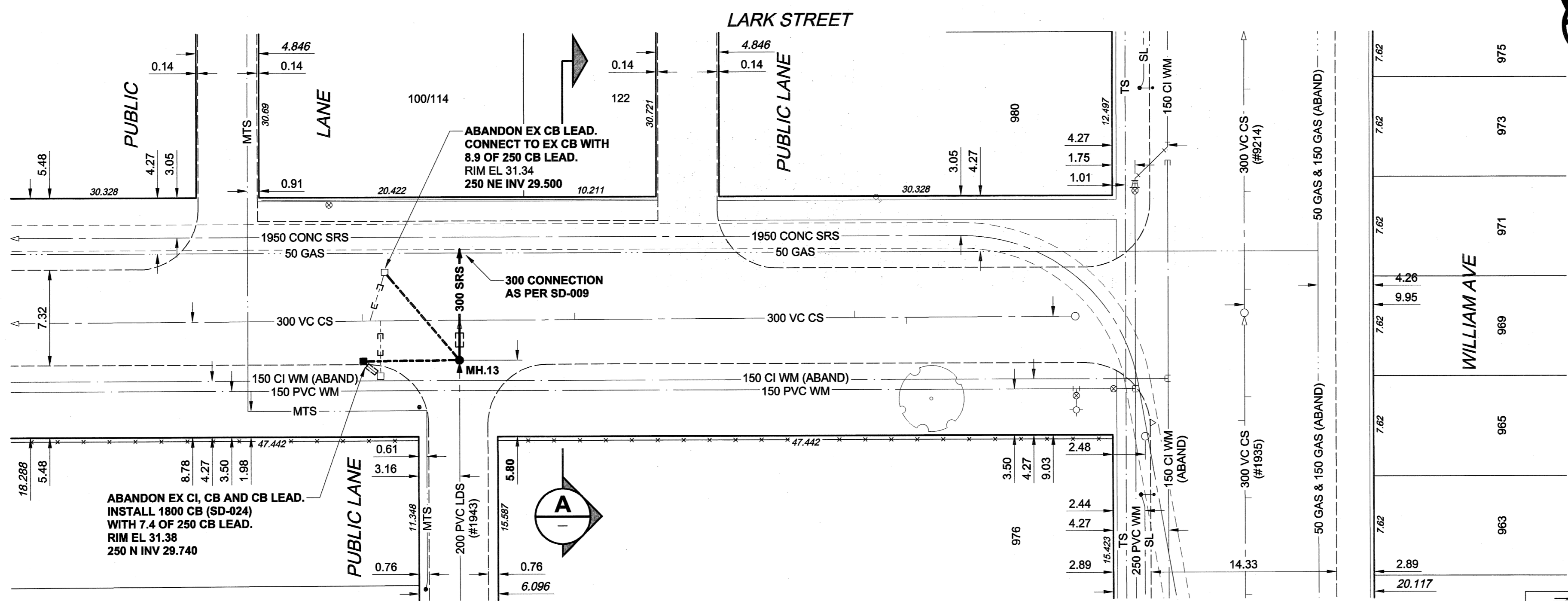


CHAINAGE ALONG E PL



- CONSTRUCTION NOTES:**
1. For detailed test hole information, see specification.
 2. The location of all services is to be confirmed in the field.
 3. Install new sewers and catchbasin leads by trenchless methods wherever possible.
 4. Renew/Rehabilitate catchbasins & renew catchbasin leads where noted.

WARNING
 IF POWER EQUIPMENT OR EXPLOSIVES ARE TO BE USED FOR EXCAVATION ON THIS PROJECT, THE CONTRACTOR MUST:
 1) NOTIFY THE GAS COMPANY OF THE PROPOSED LOCATION OF EXCAVATION.
 2) TAKE PRECAUTION TO AVOID DAMAGE TO GAS COMPANY INSTALLATIONS.
 SEE PROVINCIAL REGULATION 140/92 FOR DETAILS.

150 mm WM	WATERMAIN	150 mm WM	CURB STOP	150 mm WM	WATERMAIN	150 mm WM
HYDRANT	REDUCER	HYDRANT	REDUCER	HYDRANT	VALVE	HYDRANT
VALVE	COUPLING	VALVE	COUPLING	VALVE	COUPLING	VALVE
300 mm LDS	LAND DRAINAGE SEWER	300 mm LDS	ANODE	300 mm LDS	LAND DRAINAGE SEWER	300 mm LDS
250 mm WWS	WASTE WATER SEWER	250 mm WWS	HYDRO	250 mm WWS	WASTE WATER SEWER	250 mm WWS
MANHOLE	MANHOLE	MANHOLE	MTS	PAVEMENT CROWN	MANHOLE	MANHOLE
CATCH BASIN	CATCH BASIN	CATCH BASIN	GAS	N/W PROPERTY LINE	CATCH BASIN	CATCH BASIN
CURB INLET	CURB INLET	CURB INLET	TESTHOLE	S/E PROPERTY LINE	CURB INLET	CURB INLET
CULVERT	CULVERT	CULVERT	LAMP STANDARD	N/W GUTTER	CULVERT	CULVERT
PIPE ABANDONMENTS	PIPE ABANDONMENTS	PIPE ABANDONMENTS	TREE	S/E GUTTER	PIPE ABANDONMENTS	PIPE ABANDONMENTS
SURVEY BAR	SURVEY BAR	SURVEY BAR			SURVEY BAR	SURVEY BAR
EXISTING	LEGEND - PLAN	NEW	EXISTING	LEGEND - PROFILE	NEW	EXISTING

LOCATION APPROVED
 UNDERGROUND STRUCTURES
 SUPR. UG STRUCTURES DATE COMMITTEE
 NOTE:
 LOCATION OF UNDERGROUND STRUCTURES AS SHOWN ARE BASED ON THE BEST INFORMATION AVAILABLE. BUT NO GUARANTEE IS GIVEN THAT ALL EXISTING UTILITIES ARE SHOWN OR THAT THE GIVEN LOCATIONS ARE EXACT. CONFIRMATION OF EXISTENCE AND EXACT LOCATION OF ALL SERVICES MUST BE OBTAINED FROM THE INDIVIDUAL UTILITIES BEFORE PROCEEDING WITH CONSTRUCTION.

BM 36-037	S.E. Cor. William Ave. & McPhillips St. Tbl. in N. Conc. foundation No. 155 McPhillips St. 1m E. & 1m below Conc. blocks of N.W. Cor. of Bldg.	ELEV 232.418m
NO.	REVISIONS	YYMMDD BY
0	ISSUED FOR CONSTRUCTION	05/02/08 ADL

METRIC
 WHOLE NUMBERS INDICATE MILLIMETRES
 DECIMAL NUMBERS INDICATE METRES

UMA
 An AECOM Company
 2004 UMA ENGINEERING LTD. ALL RIGHTS RESERVED.

DESIGNED BY	FMI/GE	CHECKED BY	[Signature]
DRAWN BY	ADL	APPROVED BY	[Signature]
HOR. SCALE	1:250	RELEASED FOR CONSTRUCTION	[Signature]
VERT. SCALE	1:50	DATE	05/02/09

PROFESSIONAL'S SEAL
 PROVINCE OF MANITOBA
A. NAGY
 REGISTERED PROFESSIONAL ENGINEER
 FEB 2005
 CONSULTANT DRAWING NO. 08
 D265-177-01

THE CITY OF WINNIPEG
 WATER AND WASTE DEPARTMENT

ALEXANDER/BANNATYNE
COMBINED SEWER RELIEF
CONTRACT 1A
LARK STREET
 15m N OF BANNATYNE AVENUE
 TO WILLIAM AVENUE

SHEET 8 OF 18
 CITY DRAWING NUMBER
LD-3093
 REV 0

BID OPPORTUNITY NO. 12-2005