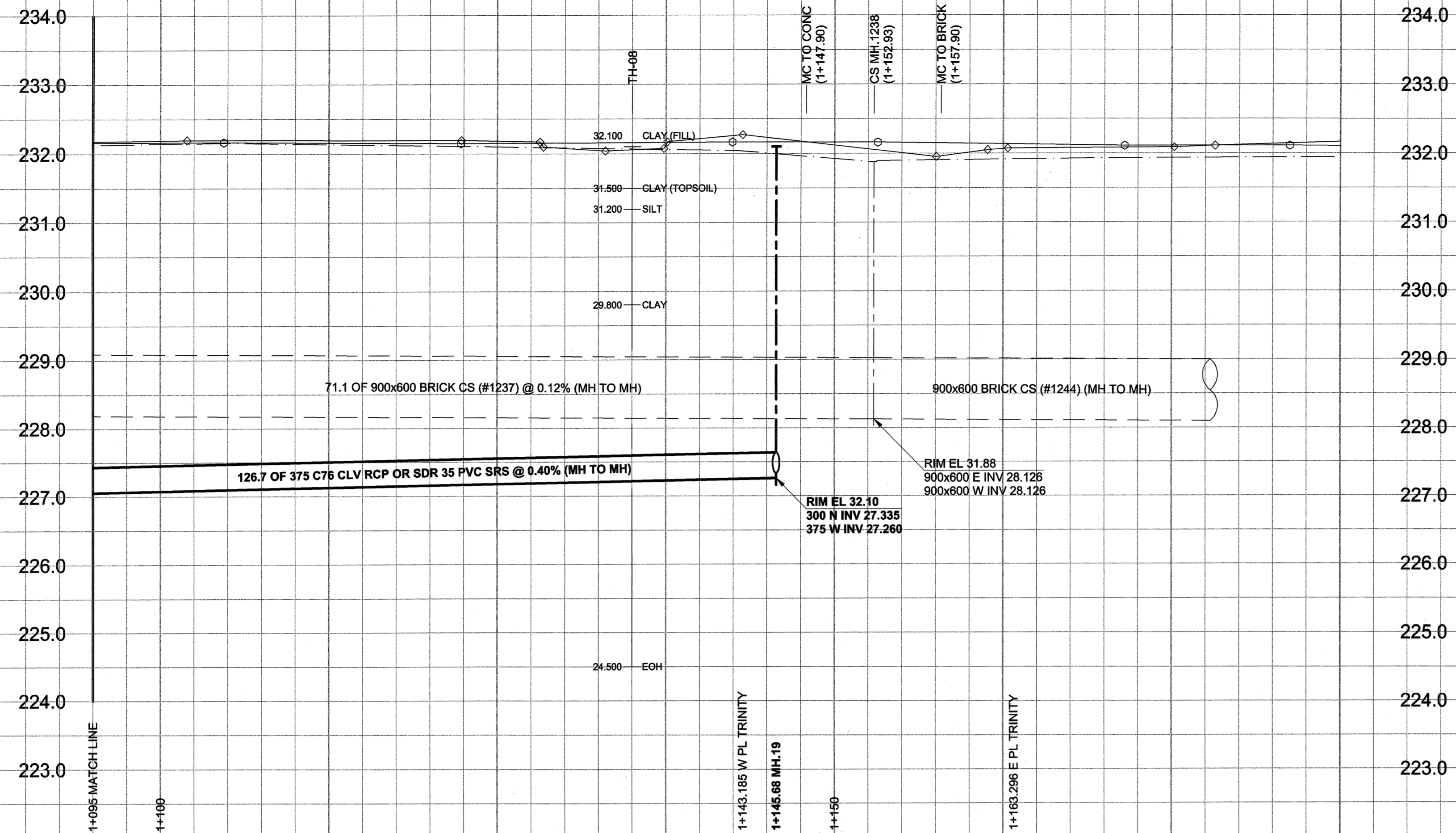


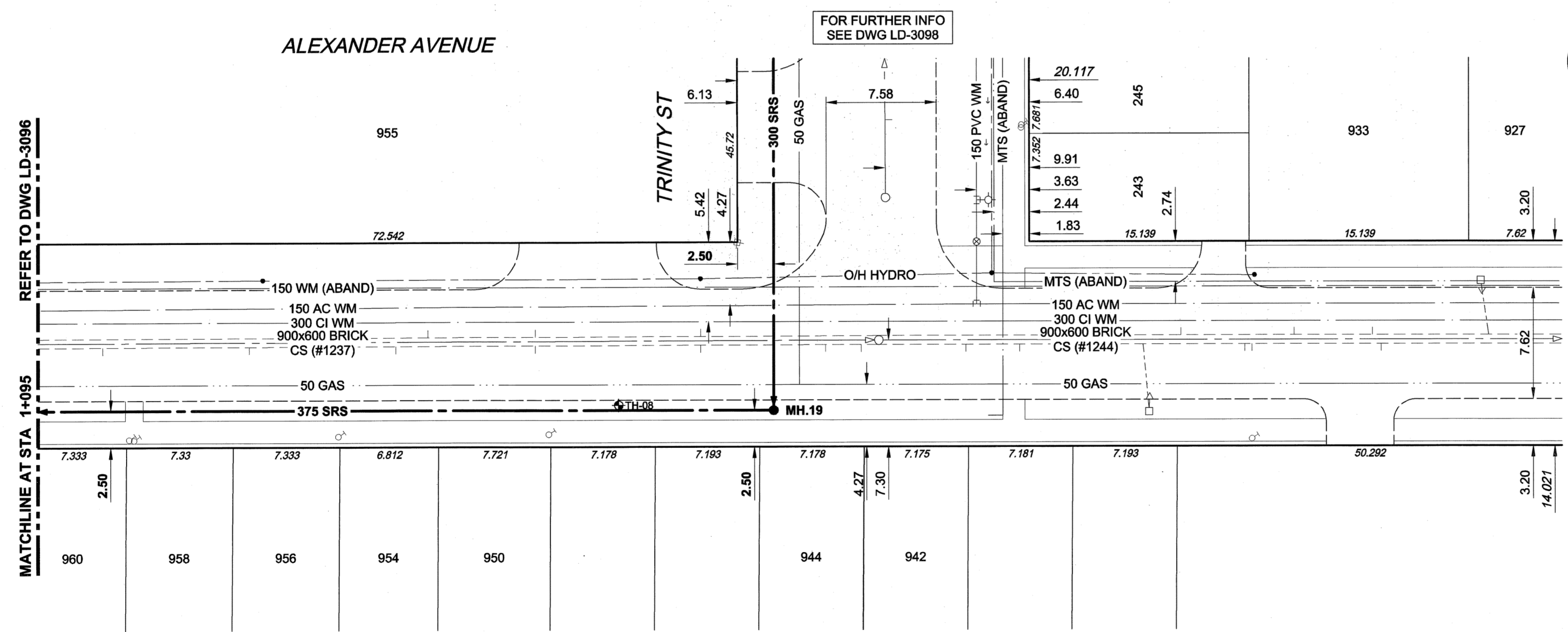
D SIZE 22" x 34" (559mm x 864mm)

PLOT: 05/02/08 4:28:34 PM

UMA FILE NAME: D285-177-01\_01-C-1012\_RX.dwg Saved By: atelpi



CHAINAGE ALONG S PL



**WARNING**  
 IF POWER EQUIPMENT OR EXPLOSIVES ARE TO BE USED FOR EXCAVATION ON THIS PROJECT, THE CONTRACTOR MUST:  
 1) NOTIFY THE GAS COMPANY OF THE PROPOSED LOCATION OF EXCAVATION.  
 2) TAKE PRECAUTION TO AVOID DAMAGE TO GAS COMPANY INSTALLATIONS.  
 SEE PROVINCIAL REGULATION 140/92 FOR DETAILS

EXISTING	LEGEND - PLAN	NEW	EXISTING	LEGEND - PLAN	NEW	EXISTING	LEGEND - PROFILE	NEW
○	150 mm WM	○	○	150 mm WM	○	○	150 mm WM	○
○	HYDRANT	○	○	HYDRANT	○	○	HYDRANT	○
○	VALVE	○	○	VALVE	○	○	VALVE	○
○	LAND DRAINAGE SEWER	○	○	LAND DRAINAGE SEWER	○	○	LAND DRAINAGE SEWER	○
○	WASTE WATER SEWER	○	○	WASTE WATER SEWER	○	○	WASTE WATER SEWER	○
○	MANHOLE	○	○	MANHOLE	○	○	MANHOLE	○
○	CATCH BASIN	○	○	CATCH BASIN	○	○	CATCH BASIN	○
○	CURB INLET	○	○	CURB INLET	○	○	CURB INLET	○
○	CULVERT	○	○	CULVERT	○	○	CULVERT	○
○	PIPE ABANDONMENTS	○	○	PIPE ABANDONMENTS	○	○	PIPE ABANDONMENTS	○
○	SURVEY BAR	○	○	SURVEY BAR	○	○	SURVEY BAR	○
○	CURB STOP	○	○	CURB STOP	○	○	CURB STOP	○
○	REDUCER	○	○	REDUCER	○	○	REDUCER	○
○	COUPLING	○	○	COUPLING	○	○	COUPLING	○
○	ANODE	○	○	ANODE	○	○	ANODE	○
○	HYDRO	○	○	HYDRO	○	○	HYDRO	○
○	MTS	○	○	MTS	○	○	MTS	○
○	GAS	○	○	GAS	○	○	GAS	○
○	TESTHOLE	○	○	TESTHOLE	○	○	TESTHOLE	○
○	LAMP STANDARD	○	○	LAMP STANDARD	○	○	LAMP STANDARD	○
○	TREE	○	○	TREE	○	○	TREE	○

**LOCATION APPROVED**  
 UNDERGROUND STRUCTURES

SUPR. U/G STRUCTURES DATE COMMITTEE

**NOTE:**  
 LOCATION OF UNDERGROUND STRUCTURES AS SHOWN ARE BASED ON THE BEST INFORMATION AVAILABLE. BUT NO GUARANTEE IS GIVEN THAT ALL EXISTING UTILITIES ARE SHOWN OR THAT THE GIVEN LOCATIONS ARE EXACT. CONFIRMATION OF EXISTENCE AND EXACT LOCATION OF ALL SERVICES MUST BE OBTAINED FROM THE INDIVIDUAL UTILITIES BEFORE PROCEEDING WITH CONSTRUCTION.

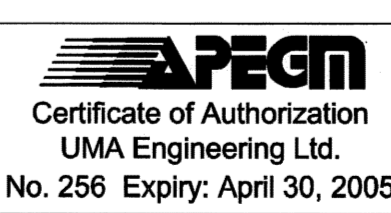
BM 36-046 ELEV 232.498m	N.W. Cor. Notre Dame Ave. & Arlington St., Thill in E. Conc. foundation No. 909 Notre Dame Ave., 0.5m S. & 0.05m below tyndall stone N.E. Cor. of Bldg.
0	ISSUED FOR CONSTRUCTION 05/02/08 ADL
NO.	REVISIONS YY/MM/DD BY

**METRIC**  
 WHOLE NUMBERS INDICATE MILLIMETRES  
 DECIMALIZED NUMBERS INDICATE METRES

**UMA**  
 An AECOM Company

2004 UMA ENGINEERING LTD. ALL RIGHTS RESERVED.

DESIGNED BY	FMI/GEB	CHECKED BY	[Signature]
DRAWN BY	ADL	APPROVED BY	[Signature]
HOR. SCALE	1:250	RELEASED FOR CONSTRUCTION	[Signature]
VERT. SCALE	1:50	DATE	05/02/09



CONSULTANT DRAWING NO. 12  
 D265-177-01

- CONSTRUCTION NOTES:**
- For detailed test hole information, see specification.
  - The location of all services is to be confirmed in the field.
  - Install new sewers and catchbasin leads by trenchless methods wherever possible.
  - Renew/Rehabilitate catchbasins & renew catchbasin leads where noted.

**THE CITY OF WINNIPEG**  
 WATER AND WASTE DEPARTMENT

**ALEXANDER/BANNATYNE**  
 COMBINED SEWER RELIEF  
 CONTRACT 1A

ALEXANDER AVENUE  
 75m E OF XANTE STREET  
 TO 24m W OF ARLINGTON STREET

SHEET 12 OF 18  
 CITY DRAWING NUMBER  
 LD-3097  
 REV 0

BID OPPORTUNITY NO. 12-2005