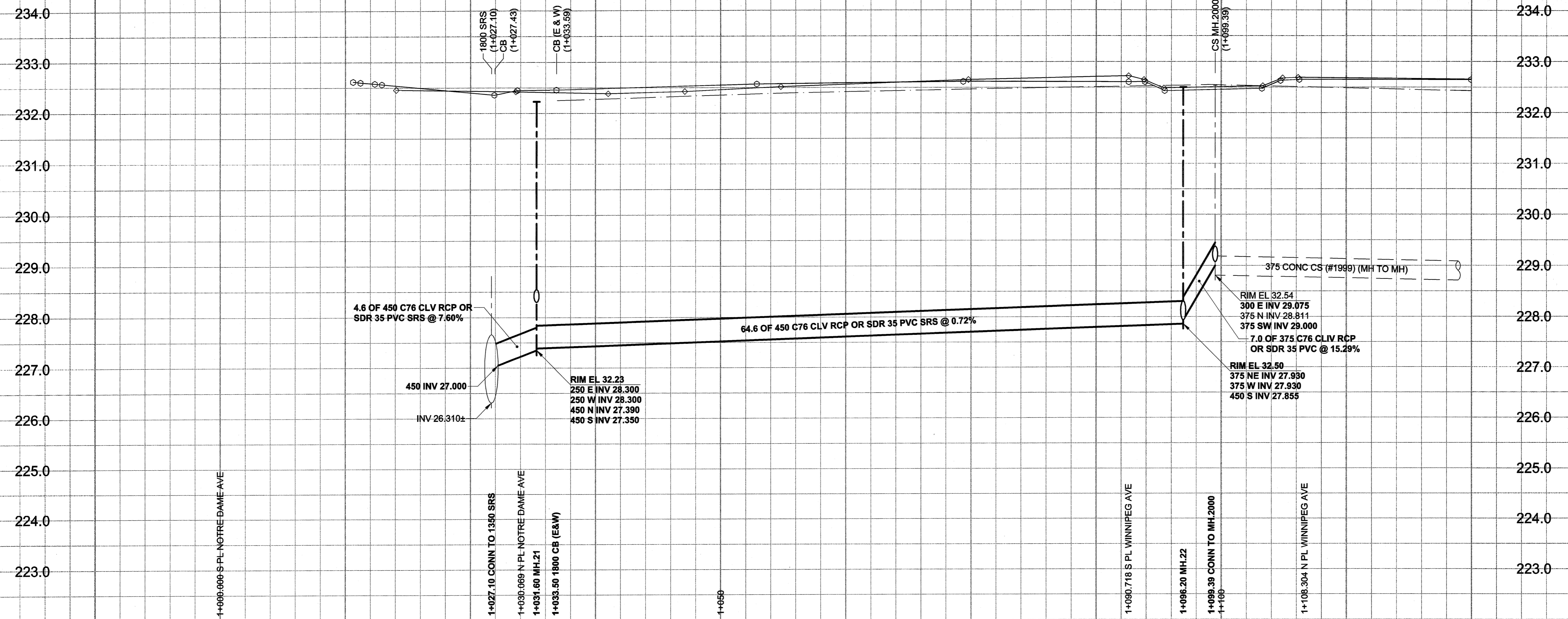


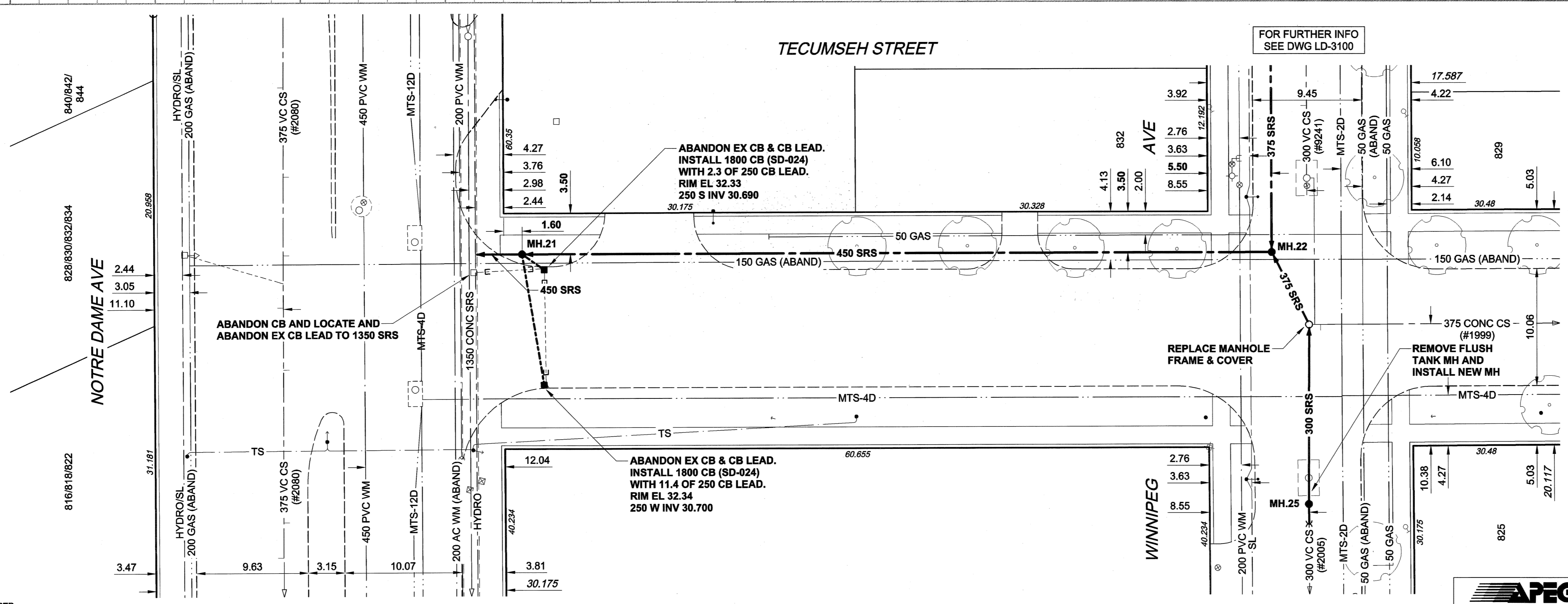
D SIZE 22" x 34" (559mm x 864mm)

PLOT: 05/02/08 4:28:08 PM

UMA FILE NAME: D265-177-01_01-C-1014_RX.dwg Saved By: alejpl



CHAINAGE ALONG E PL



WARNING
 IF POWER EQUIPMENT OR EXPLOSIVES ARE TO BE USED FOR EXCAVATION ON THIS PROJECT, THE CONTRACTOR MUST:
 1) NOTIFY THE GAS COMPANY OF THE PROPOSED LOCATION OF EXCAVATION.
 2) TAKE PRECAUTION TO AVOID DAMAGE TO GAS COMPANY INSTALLATIONS.
 SEE PROVINCIAL REGULATION 140/92 FOR DETAILS

150 mm WM	WATERMAIN	150 mm WM	EXISTING	LEGEND - PLAN	NEW	150 mm WM	WATERMAIN	150 mm WM	EXISTING	LEGEND - PROFILE	NEW
	HYDRANT			CURB STOP			HYDRANT			REDUCER	
	VALVE			COUPLING			VALVE			ANODE	HYDRO
	LAND DRAINAGE SEWER			ANODE			LAND DRAINAGE SEWER			HYDRO	MTS
	WASTE WATER SEWER			HYDRO			WASTE WATER SEWER			MTS	GAS
	MANHOLE			TESTHOLE			PAVEMENT CROWN			TESTHOLE	MTS
	CATCH BASIN			LAMP STANDARD			N/W PROPERTY LINE			LAMP STANDARD	GAS
	CURB INLET			TREE			S/E PROPERTY LINE			TREE	TESTHOLE
	CULVERT						N/W GUTTER				LAMP STANDARD
	PIPE ABANDONMENTS						S/E GUTTER				TREE
	SURVEY BAR										
	EXISTING										

LOCATION APPROVED
 UNDERGROUND STRUCTURES

DATE COMMITTEE

NOTE:
 LOCATION OF UNDERGROUND STRUCTURES AS SHOWN ARE BASED ON THE BEST INFORMATION AVAILABLE, BUT NO GUARANTEE IS GIVEN THAT ALL EXISTING UTILITIES ARE SHOWN OR THAT THE GIVEN LOCATIONS ARE EXACT. CONFIRMATION OF EXISTENCE AND EXACT LOCATION OF ALL SERVICES MUST BE OBTAINED FROM THE INDIVIDUAL UTILITIES BEFORE PROCEEDING WITH CONSTRUCTION.

NO.	ISSUED FOR CONSTRUCTION	DATE	BY
0	ISSUED FOR CONSTRUCTION	05/02/08	ADL
	REVISIONS	YY/MM/DD	BY

DESIGNED BY	FMJ/GEB	CHECKED BY	DATE
DRAWN BY	ADL	APPROVED BY	DATE
HOR. SCALE	1:250	RELEASED FOR CONSTRUCTION	DATE
VERT. SCALE	1:50		

METRIC
 WHOLE NUMBERS INDICATE MILLIMETRES
 DECIMALIZED NUMBERS INDICATE METRES

UMA
 An AECOM Company
 2004 UMA ENGINEERING LTD. ALL RIGHTS RESERVED.

PROFESSIONAL'S SEAL
 PROVINCE OF MANITOBA
 REGISTERED PROFESSIONAL ENGINEER
 A. NAGY
 FEB 8, 2008
 CONSULTANT DRAWING NO. 14
 D265-177-01

- CONSTRUCTION NOTES:**
- For detailed test hole information, see specification.
 - The location of all services is to be confirmed in the field.
 - Install new sewers and catchbasin leads by trenchless methods wherever possible.
 - Renew/Rehabilitate catchbasins & renew catchbasin leads where noted.

THE CITY OF WINNIPEG
WATER AND WASTE DEPARTMENT

ALEXANDER/BANNATYNE
 COMBINED SEWER RELIEF
 CONTRACT 1A
 TECUMSEH STREET
 NOTRE DAME AVENUE
 TO WINNIPEG AVENUE

SHEET 14 OF 18
 CITY DRAWING NUMBER
 LD-3099
 REV 0

BID OPPORTUNITY NO. 12-2005